

# Converting Colors

Decimal(15238032)

Have a look what the booklet for  
Decimal(15238032) contains.

<b>Decimal(15238032)</b> .....	3
<i><b>Conversions</b></i> .....	4
<i><b>Details</b></i> .....	6
<i><b>Harmonies</b></i> .....	11
<i><b>Previews</b></i> .....	23
<i><b>Color Blindness Simulation</b></i> .....	26
<i><b>CSS Examples</b></i> .....	29

# **Color**

**Decimal(15238032)**

# Conversions

## Conversions Part 1

Format	Color
Hex	E88390
RGB	232, 131, 144
RGB Percent	91%, 51%, 56%
CMY	0.0902, 0.4863, 0.4353
CMYK	0.00, 0.44, 0.38, 0.09
HSL	352°, 69%, 71%
HSV	352°, 44%, 91%
XYZ	46.4291, 35.4020, 30.7718
YIQ	162.6810, 56.0230, 25.4550

# Conversions

## Conversions Part 2

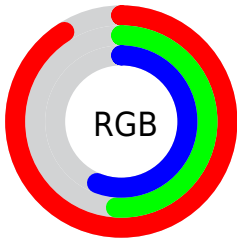
<b>Format</b>	<b>Color</b>
R <sub>Y</sub> B	232, 131, 144
Decimal	15238032
CIE Lab	66.06, 40.07, 10.24
CIE LCh	66, 41.358, 14.328
Yxy	35.4020, 0.4123, 0.3144
Android (android.graphics.Color)	4293428112 (0xFFE88390)
YUV	162.6810, -9.2097, 60.7928
Hunter-Lab	59.4996, 35.1638, 10.9864

# Details

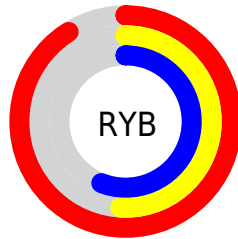
The Decimal color **15238032** is a light color, and the websafe version is hex **FF9999**. A complement of this color would be **8644827**, and the grayscale version is **10724259**.

A 20% lighter version of the original color is **16759494**, and **11358046** is the 20% darker color. If you saturate the color by 10%, you get **15232124**, and if you desaturate by 10%, it is **15243940**.

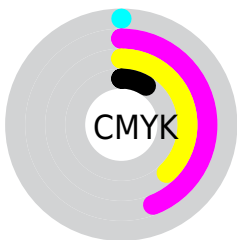
# Distribution



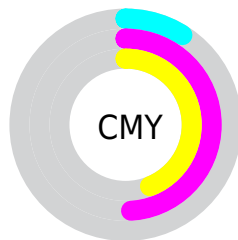
- Red (91%)
- Green (51%)
- Blue (56%)



- Red (91%)
- Yellow (51%)
- Blue (56%)



- Cyan (0%)
- Magenta (44%)
- Yellow (38%)
- Black (9%)



- Cyan (9%)
- Magenta (49%)
- Yellow (44%)

# Brightness & Saturation Gradients

These gradients show how the Decimal color 15238032 changes by changing the brightness by 10 percent. The first figure shows a shift by +10% for each color and the second figure -10%.

Similar to the brightness gradients but the following saturation gradients show a change of the Decimal color 15238032 by changing the saturation by 10% instead.



 15238032

 15238032

16777215

 13265270

 16759494

 11358046

 16766690

 9516358

 16774142

 7674672

 5832731

 4128768

 2424833

 0

 15238032

 15238032

 15232124

 15243940

 15226216

 15249848

 15220051

 15256013

 15214143

 15261921

 15208235

 15267829

 15204382

 15269887

# Harmonies

## Analogous

The Analogous color harmony consists of three colors that are next to each other on the color wheel.



14452150



15238032



14715758

# Triad

The Triadic color harmony groups three colors that are evenly spaced from another and form a triangle on the color wheel.



15238032



8236394



3844839

# Complementary

The Complementary color scheme is a pair of colors which are on the opposite of each other on the color wheel.



15238032



8644827

# Split Complementary

Split-complementary colors differ from the complementary color scheme. The scheme consists of three colors, the original color and two neighbors of the complement color.



45523



15238032



4895627

# Square

The Square scheme is like the rectangle color scheme, but the four colors are evenly spaced on the color wheel.



15238032



10921047



46258



8822504

# Rectangle

The Rectangle color scheme consists of four colors that form a rectangle on the color wheel.



15238032



13800286



46258



306659



# Sweetspot

The Sweet Spot groups the original color and five complimentary colors.



15238032



16768738



14386152



8416110



0



8421504



# Same Dimension

The Same Dimension uses a secret algorithm to generate beautiful new colors.



15238032



16743051



15247491



7563113



11730967



3342343



# Inverse Universe

The Inverse Universe completely reimagines the original color for something new.



15238032



16743051



8635368



7563113



11730967



3342343



# Previews

## White Background



This preview shows how the Decimal color 15238032 looks on a white background.

## Color Contrast Check

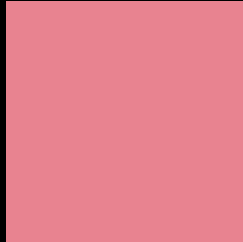
Large Text (above 18pt) WCAG AA × Fail

Any Text WCAG AA × Fail

Large Text (above 18pt) WCAG AAA × Fail

Any Text WCAG AAA × Fail

# Black Background



This preview shows how the Decimal color 15238032 looks on a black background.

## Color Contrast Check

Large Text (above 18pt) WCAG AA ✓ Pass

Any Text WCAG AA ✓ Pass

Large Text (above 18pt) WCAG AAA ✓ Pass

Any Text WCAG AAA ✓ Pass

If you want to check with other color combinations, try the [Color Contrast Checker](#).



## Decimal 15238032 Background



This preview shows how black text looks on a background with the Decimal color 15238032.



This preview shows how white text looks on a background with the Decimal color 15238032.

# Color Blindness Simulation

Color vision deficiency is a very complex topic, and I could not describe the different causes any better than Wikipedia does, so if you want to learn more, you should check out their [article about color blindness](#).

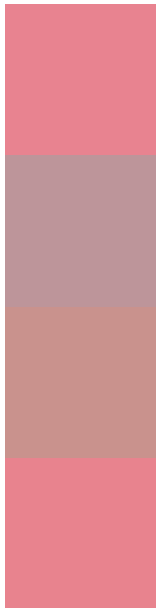
## Dichromacy





**Tritanopia**  
15238029

# Trichromacy



**Original Color**  
15238032

**Protanomaly**  
12424602

**Deuteranomaly**  
13210253

**Tritanomaly**  
15238030

# Monochromacy



**Original Color**  
15238032

**Achromatopsia**  
10724259

**Achromatomaly**  
12359580

# CSS Examples

## Text

The CSS property to change the color of the text to Decimal 15238032 is called "color". The color property can be set on classes, ids or directly on the HTML element.

This example shows how text in the color #E88390 looks like.

```
.text, #text, p{  
    color:#E88390  
}
```

If you want to add a text shadow in that color use the text-shadow property, you can generate a text shadow directly with our [CSS Text Shadow Generator](#).

Here you see how black text with a 4 pixel #E88390 colored shadow looks like.

```
.shadow{ text-shadow: 4px 4px 2px #E88390
}
```

## Border

The CSS property to change the border of an element to Decimal 15238032 is called "border". The border property can be set on classes, ids or directly on the HTML element.

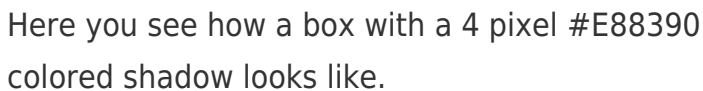
This example shows the color as border, it can be applied via the CSS property "border" or "border-color".

```
.border, #border, table{ border:4px solid
#E88390 }
```

If only the border color should be changed use the property `border-color`.

```
.border{ border-color:#E88390 }
```

If you want to add a box shadow in that color use:



Here you see how a box with a 4 pixel #E88390 colored shadow looks like.

```
.boxshadow{ -moz-box-shadow:4px 4px 4px  
4px #E88390; -webkit-box-shadow:4px 4px  
4px 4px #E88390; box-shadow:4px 4px 4px  
4px #E88390 }
```

# Background

The CSS property to change the background color of an element to Decimal 15238032 is called "background". The background property can be set on classes, ids or directly on the HTML element.

```
.background, #background, body{  
background:#E88390 }
```

If only the background color should be changed can be used:

```
.background{ background-color:#E88390 }
```

This example shows the color as background, it is applied via the CSS property "background".

To optimize and compress your CSS code, you can use our [online CSS compressor and optimizer](#) based on csstidy. If you want to create a linear or radial gradient as background or border, check our [CSS Gradient Generator](#).



Hey! You found this booklet interesting? Support Converting Colors with the new Membership Option!

The pro membership hides all ads, plus gives you double the colors in the color bucket, and more awesome pro features!

**[Learn more, Memberships starting at \\$2.50/m!](#)**

**Follow me  
on Twitter!**

@ConvertingColor