

# Converting Colors

Decimal(15238560)

Have a look what the booklet for  
Decimal(15238560) contains.

<b>Decimal(15238560)</b> .....	3
<i><b>Conversions</b></i> .....	4
<i><b>Details</b></i> .....	6
<i><b>Harmonies</b></i> .....	11
<i><b>Previews</b></i> .....	23
<i><b>Color Blindness Simulation</b></i> .....	26
<i><b>CSS Examples</b></i> .....	29

# **Color**

**Decimal(15238560)**

# Conversions

## Conversions Part 1

<b>Format</b>	<b>Color</b>
Hex	E885A0
RGB	232, 133, 160
RGB Percent	91%, 52%, 63%
CMY	0.0902, 0.4784, 0.3725
CMYK	0.00, 0.43, 0.31, 0.09
HSL	344°, 68%, 72%
HSV	344°, 43%, 91%
XYZ	48.0114, 36.4689, 37.7664
YIQ	165.6790, 50.3370, 29.3850

# Conversions

## Conversions Part 2

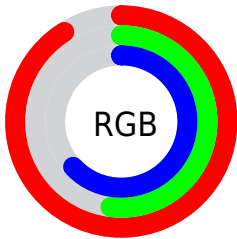
Format	Color
<a href="#">RYB</a>	<a href="#">232, 133, 160</a>
Decimal	<a href="#">15238560</a>
CIELab	<a href="#">66.88, 40.98, 2.37</a>
CIElCh	<a href="#">67, 41.045, 3.308</a>
Yxy	<a href="#">36.4689, 0.3927, 0.2983</a>
Android (android.graphics.Color)	<a href="#">4293428640</a> ( <a href="#">0xFFE885A0</a> )
YUV	<a href="#">165.6790, -2.7997, 58.1635</a>
Hunter-Lab	<a href="#">60.3895, 36.2310, 5.1938</a>

# Details

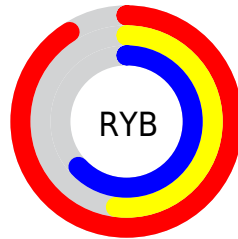
The Decimal color **15238560** is a light color, and the websafe version is hex **FF99CC**. A complement of this color would be **8775885**, and the grayscale version is **10921638**.

A 20% lighter version of the original color is **16760023**, and **11424109** is the 20% darker color. If you saturate the color by 10%, you get **15232655**, and if you desaturate by 10%, it is **15244465**.

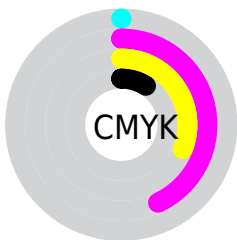
# Distribution



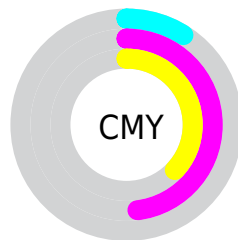
- Red (91%)
- Green (52%)
- Blue (63%)



- Red (91%)
- Yellow (52%)
- Blue (63%)



- Cyan (0%)
- Magenta (43%)
- Yellow (31%)
- Black (9%)



- Cyan (9%)
- Magenta (48%)
- Yellow (37%)

# Brightness & Saturation Gradients

These gradients show how the Decimal color 15238560 changes by changing the brightness by 10 percent. The first figure shows a shift by +10% for each color and the second figure -10%.

Similar to the brightness gradients but the following saturation gradients show a change of the Decimal color 15238560 by changing the saturation by 10% instead.



 15238560

 15238560

16777215

 13331334

 16760023

 11424109

 16767219

 9582420

 16774655

 7740733

 5963816

 4194323

 2686977

 0

 15238560

 15238560

 15232655

 15244465

 15226750

 15250370

 15220589

 15256531

 15214685

 15262435

 15208780

 15268340

 15204415

 15269887

# Harmonies

## Analogous

The Analogous color harmony consists of three colors that are next to each other on the color wheel.



13929413



15238560



15174012

# Triad

The Triadic color harmony groups three colors that are evenly spaced from another and form a triangle on the color wheel.



15238560



9415779



1028068

# Complementary

The Complementary color scheme is a pair of colors which are on the opposite of each other on the color wheel.



15238560



8775885

# Split Complementary

Split-complementary colors differ from the complementary color scheme. The scheme consists of three colors, the original color and two neighbors of the complement color.



46538



15238560



6402944

# Square

The Square scheme is like the rectangle color scheme, but the four colors are evenly spaced on the color wheel.



15238560



11969112



1816230



7382508

# Rectangle

The Rectangle color scheme consists of four colors that form a rectangle on the color wheel.



15238560



14520681



1816230



45789



# Sweetspot

The Sweet Spot groups the original color and five complimentary colors.



15238560



16768743



13403624



8416113



0



8421504



# Same Dimension

The Same Dimension uses a secret algorithm to generate beautiful new colors.



15238560



16743840



15243909



7563114



11730993



3342350



# Inverse Universe

The Inverse Universe completely reimagines the original color for something new.



15238560



16743840



8770536



7563114



11730993



3342350



# Previews

## White Background



This preview shows how the Decimal color 15238560 looks on a white background.

## Color Contrast Check

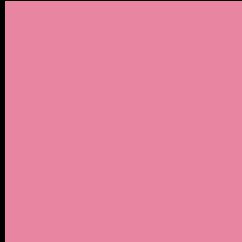
Large Text (above 18pt) WCAG AA × Fail

Any Text WCAG AA × Fail

Large Text (above 18pt) WCAG AAA × Fail

Any Text WCAG AAA × Fail

# Black Background



This preview shows how the Decimal color 15238560 looks on a black background.

## Color Contrast Check

Large Text (above 18pt) WCAG AA ✓ Pass

Any Text WCAG AA ✓ Pass

Large Text (above 18pt) WCAG AAA ✓ Pass

Any Text WCAG AAA ✓ Pass

If you want to check with other color combinations, try the [Color Contrast Checker](#).



## Decimal 15238560 Background



This preview shows how black text looks on a background with the Decimal color 15238560.



This preview shows how white text looks on a background with the Decimal color 15238560.

# Color Blindness Simulation

Color vision deficiency is a very complex topic, and I could not describe the different causes any better than Wikipedia does, so if you want to learn more, you should check out their [article about color blindness](#).

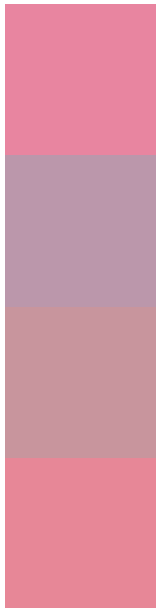
## Dichromacy





**Tritanopia**  
15173778

# Trichromacy



**Original Color**  
15238560

**Protanomaly**  
12294059

**Deuteranomaly**  
13145501

**Tritanomaly**  
15173527

# Monochromacy



**Original Color**  
15238560

**Achromatopsia**  
10921638

**Achromatomaly**  
12491428

# CSS Examples

## Text

The CSS property to change the color of the text to Decimal 15238560 is called "color". The color property can be set on classes, ids or directly on the HTML element.

This example shows how text in the color #E885A0 looks like.

```
.text, #text, p{  
    color:#E885A0  
}
```

If you want to add a text shadow in that color use the text-shadow property, you can generate a text shadow directly with our [CSS Text Shadow Generator](#).

Here you see how black text with a 4 pixel #E885A0 colored shadow looks like.

```
.shadow{ text-shadow: 4px 4px 2px #E885A0
}
```

## Border

The CSS property to change the border of an element to Decimal 15238560 is called "border". The border property can be set on classes, ids or directly on the HTML element.

This example shows the color as border, it can be applied via the CSS property "border" or "border-color".

```
.border, #border, table{ border:4px solid
#E885A0 }
```

If only the border color should be changed use the property `border-color`.

```
.border{ border-color:#E885A0 }
```

If you want to add a box shadow in that color use:

Here you see how a box with a 4 pixel #E885A0 colored shadow looks like.

```
.boxshadow{ -moz-box-shadow:4px 4px 4px  
4px #E885A0; -webkit-box-shadow:4px 4px  
4px 4px #E885A0; box-shadow:4px 4px 4px  
4px #E885A0 }
```

# Background

The CSS property to change the background color of an element to Decimal 15238560 is called "background". The background property can be set on classes, ids or directly on the HTML element.

```
.background, #background, body{  
background:#E885A0 }
```

If only the background color should be changed can be used:

```
.background{ background-color:#E885A0 }
```

This example shows the color as background, it is applied via the CSS property "background".

To optimize and compress your CSS code, you can use our [online CSS compressor and optimizer](#) based on csstidy. If you want to create a linear or radial gradient as background or border, check our [CSS Gradient Generator](#).



Hey! You found this booklet interesting? Support Converting Colors with the new Membership Option!

The pro membership hides all ads, plus gives you double the colors in the color bucket, and more awesome pro features!

**[Learn more, Memberships starting at \\$2.50/m!](#)**

**Follow me  
on Twitter!**

@ConvertingColor