

# Converting Colors

Decimal(15244197)

Have a look what the booklet for  
Decimal(15244197) contains.

<b>Decimal(15244197)</b> .....	3
<i><b>Conversions</b></i> .....	4
<i><b>Details</b></i> .....	6
<i><b>Harmonies</b></i> .....	11
<i><b>Previews</b></i> .....	23
<i><b>Color Blindness Simulation</b></i> .....	26
<i><b>CSS Examples</b></i> .....	29

# **Color**

**Decimal(15244197)**

# Conversions

## Conversions Part 1

<b>Format</b>	<b>Color</b>
Hex	E89BA5
RGB	232, 155, 165
RGB Percent	91%, 61%, 65%
CMY	0.0902, 0.3922, 0.3529
CMYK	0.00, 0.33, 0.29, 0.09
HSL	352°, 63%, 76%
HSV	352°, 33%, 91%
XYZ	51.7916, 43.3151, 41.2282
YIQ	179.1630, 42.6820, 19.4340

# Conversions

## Conversions Part 2

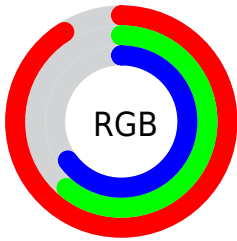
Format	Color
RYP	232, 155, 165
Decimal	15244197
CIELab	71.77, 30.08, 6.63
CIElCh	72, 30.803, 12.437
Yxy	43.3151, 0.3799, 0.3177
Android (android.graphics.Color)	4293434277 (0xFFE89BA5)
YUV	179.1630, -6.9824, 46.3380
Hunter-Lab	65.8142, 25.2932, 8.9287

# Details

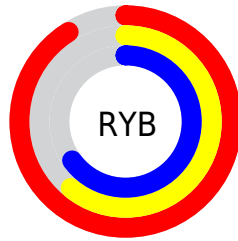
The Decimal color **15244197** is a light color, and the websafe version is hex **CC9999**. A complement of this color would be **10217694**, and the grayscale version is **11776947**.

A 20% lighter version of the original color is **16765660**, and **11495281** is the 20% darker color. If you saturate the color by 10%, you get **15238289**, and if you desaturate by 10%, it is **15250105**.

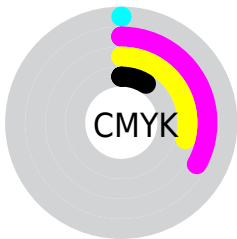
# Distribution



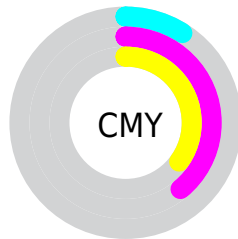
- Red (91%)
- Green (61%)
- Blue (65%)



- Red (91%)
- Yellow (61%)
- Blue (65%)



- Cyan (0%)
- Magenta (33%)
- Yellow (29%)
- Black (9%)



- Cyan (9%)
- Magenta (39%)
- Yellow (35%)

# Brightness & Saturation Gradients

These gradients show how the Decimal color 15244197 changes by changing the brightness by 10 percent. The first figure shows a shift by +10% for each color and the second figure -10%.

Similar to the brightness gradients but the following saturation gradients show a change of the Decimal color 15244197 by changing the saturation by 10% instead.



 15244197

 15244197

16777215

 13336971

 16765660

 11495281

 16773112

 9653849

 7878210

 6102572

 4392215

 3014656

 0

 15244197

 15244197

 15238289

 15250105

 15232381

 15256013

 15226216

 15262178

 15220308

 15268086

 15214400

 15269887

 15208492

 15204382

# Harmonies

## Analogous

The Analogous color harmony consists of three colors that are next to each other on the color wheel.



14523842



15244197



14983307

# Triad

The Triadic color harmony groups three colors that are evenly spaced from another and form a triangle on the color wheel.



15244197



10008966



7583717

# Complementary

The Complementary color scheme is a pair of colors which are on the opposite of each other on the color wheel.



15244197



10217694

# Split Complementary

Split-complementary colors differ from the complementary color scheme. The scheme consists of three colors, the original color and two neighbors of the complement color.



5750229



15244197



7913118

# Square

The Square scheme is like the rectangle color scheme, but the four colors are evenly spaced on the color wheel.



15244197



12104313



6078395



10268646

# Rectangle

The Rectangle color scheme consists of four colors that form a rectangle on the color wheel.



15244197



14263679



6078395



6798049



# Sweetspot

The Sweet Spot groups the original color and five complimentary colors.



15244197



16770793



14588904



8417394



0



8421504



# Same Dimension

The Same Dimension uses a secret algorithm to generate beautiful new colors.



15244197



16751014



15251355



7563113



11730967



3342343



# Inverse Universe

The Inverse Universe completely reimagines the original color for something new.



15244197



16751014



10210536



7563113



11730967



3342343



# Previews

## White Background



This preview shows how the Decimal color 15244197 looks on a white background.

## Color Contrast Check

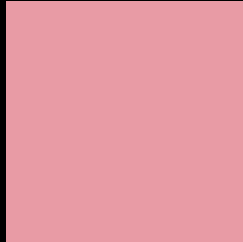
Large Text (above 18pt) WCAG AA × Fail

Any Text WCAG AA × Fail

Large Text (above 18pt) WCAG AAA × Fail

Any Text WCAG AAA × Fail

# Black Background



This preview shows how the Decimal color 15244197 looks on a black background.

## Color Contrast Check

Large Text (above 18pt) WCAG AA ✓ Pass

Any Text WCAG AA ✓ Pass

Large Text (above 18pt) WCAG AAA ✓ Pass

Any Text WCAG AAA ✓ Pass

If you want to check with other color combinations, try the [Color Contrast Checker](#).



## Decimal 15244197 Background



This preview shows how black text looks on a background with the Decimal color 15244197.



This preview shows how white text looks on a background with the Decimal color 15244197.

# Color Blindness Simulation

Color vision deficiency is a very complex topic, and I could not describe the different causes any better than Wikipedia does, so if you want to learn more, you should check out their [article about color blindness](#).

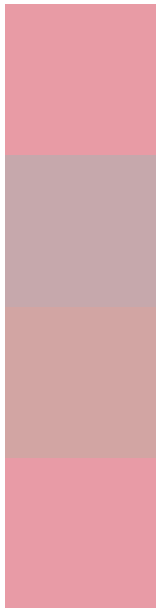
## Dichromacy





**Tritanopia**  
15244198

# Trichromacy



**Original Color**  
15244197

**Protanomaly**  
13019308

**Deuteranomaly**  
13804963

**Tritanomaly**  
15244198

# Monochromacy



**Original Color**  
15244197

**Achromatopsia**  
11776947

**Achromatomaly**  
13019822

# CSS Examples

## Text

The CSS property to change the color of the text to Decimal 15244197 is called "color". The color property can be set on classes, ids or directly on the HTML element.

This example shows how text in the color #E89BA5 looks like.

```
.text, #text, p{  
  color:#E89BA5  
}
```

If you want to add a text shadow in that color use the text-shadow property, you can generate a text shadow directly with our [CSS Text Shadow Generator](#).

Here you see how black text with a 4 pixel #E89BA5 colored shadow looks like.

```
.shadow{ text-shadow: 4px 4px 2px #E89BA5
}
```

## Border

The CSS property to change the border of an element to Decimal 15244197 is called "border". The border property can be set on classes, ids or directly on the HTML element.

This example shows the color as border, it can be applied via the CSS property "border" or "border-color".

```
.border, #border, table{ border:4px solid
#E89BA5 }
```

If only the border color should be changed use the property `border-color`.

```
.border{ border-color:#E89BA5 }
```

If you want to add a box shadow in that color use:

Here you see how a box with a 4 pixel #E89BA5 colored shadow looks like.

```
.boxshadow{ -moz-box-shadow:4px 4px 4px  
4px #E89BA5; -webkit-box-shadow:4px 4px  
4px 4px #E89BA5; box-shadow:4px 4px 4px  
4px #E89BA5 }
```

# Background

The CSS property to change the background color of an element to Decimal 15244197 is called "background". The background property can be set on classes, ids or directly on the HTML element.

```
.background, #background, body{  
background:#E89BA5 }
```

If only the background color should be changed can be used:

```
.background{ background-color:#E89BA5 }
```

This example shows the color as background, it is applied via the CSS property "background".

To optimize and compress your CSS code, you can use our [online CSS compressor and optimizer](#) based on csstidy. If you want to create a linear or radial gradient as background or border, check our [CSS Gradient Generator](#).



Hey! You found this booklet interesting? Support Converting Colors with the new Membership Option!

The pro membership hides all ads, plus gives you double the colors in the color bucket, and more awesome pro features!

**[Learn more, Memberships starting at \\$2.50/m!](#)**

**Follow me  
on Twitter!**

@ConvertingColor