

# Converting Colors

Decimal(15244453)

Have a look what the booklet for  
Decimal(15244453) contains.

<b>Decimal(15244453)</b> .....	3
<i><b>Conversions</b></i> .....	4
<i><b>Details</b></i> .....	6
<i><b>Harmonies</b></i> .....	11
<i><b>Previews</b></i> .....	23
<i><b>Color Blindness Simulation</b></i> .....	26
<i><b>CSS Examples</b></i> .....	29

# **Color**

**Decimal(15244453)**

# Conversions

## Conversions Part 1

<b>Format</b>	<b>Color</b>
Hex	E89CA5
RGB	232, 156, 165
RGB Percent	91%, 61%, 65%
CMY	0.0902, 0.3882, 0.3529
CMYK	0.00, 0.33, 0.29, 0.09
HSL	353°, 62%, 76%
HSV	353°, 33%, 91%
XYZ	51.9587, 43.6494, 41.2840
YIQ	179.7500, 42.4070, 18.9110

# Conversions

## Conversions Part 2

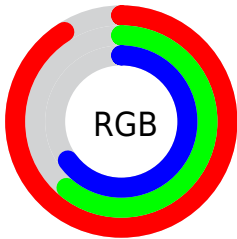
Format	Color
R <sub>Y</sub> B	232, 156, 165
Decimal	15244453
CIE Lab	71.99, 29.55, 6.96
CIE LCh	72, 30.356, 13.248
Yxy	43.6494, 0.3796, 0.3189
Android (android.graphics.Color)	4293434533 (0xFFE89CA5)
YUV	179.7500, -7.2717, 45.8233
Hunter-Lab	66.0677, 24.7624, 9.1986

# Details

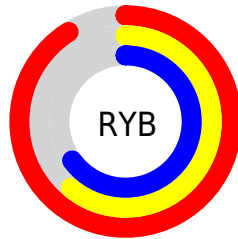
The Decimal color **15244453** is a light color, and the websafe version is hex **CC9999**. A complement of this color would be **10283231**, and the grayscale version is **11842740**.

A 20% lighter version of the original color is **16765916**, and **11495537** is the 20% darker color. If you saturate the color by 10%, you get **15238545**, and if you desaturate by 10%, it is **15250361**.

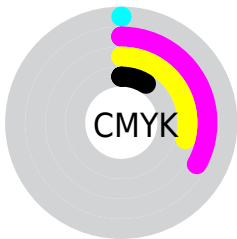
# Distribution



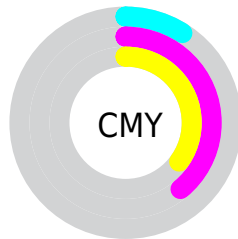
- Red (91%)
- Green (61%)
- Blue (65%)



- Red (91%)
- Yellow (61%)
- Blue (65%)



- Cyan (0%)
- Magenta (33%)
- Yellow (29%)
- Black (9%)



- Cyan (9%)
- Magenta (39%)
- Yellow (35%)

# Brightness & Saturation Gradients

These gradients show how the Decimal color 15244453 changes by changing the brightness by 10 percent. The first figure shows a shift by +10% for each color and the second figure -10%.

Similar to the brightness gradients but the following saturation gradients show a change of the Decimal color 15244453 by changing the saturation by 10% instead.



 15244453

 15244453

16777215

 13337227

 16765916

 11495537

 16773368

 9654105

 7878466

 6102828

 4458007

 3014656

 0

 15244453

 15244453

 15238545

 15250361

 15232636

 15256270

 15226472

 15262434

 15220563

 15268343

 15214655

 15269887

 15208746

 15204379

# Harmonies

## Analogous

The Analogous color harmony consists of three colors that are next to each other on the color wheel.



14524097



15244453



14918028

# Triad

The Triadic color harmony groups three colors that are evenly spaced from another and form a triangle on the color wheel.



15244453



10074759



7780581

# Complementary

The Complementary color scheme is a pair of colors which are on the opposite of each other on the color wheel.



15244453



10283231

# Split Complementary

Split-complementary colors differ from the complementary color scheme. The scheme consists of three colors, the original color and two neighbors of the complement color.



5947093



15244453



7913376

# Square

The Square scheme is like the rectangle color scheme, but the four colors are evenly spaced on the color wheel.



15244453



12104570



6209724



10465254

# Rectangle

The Rectangle color scheme consists of four colors that form a rectangle on the color wheel.



15244453



14263936



6209724



6994657

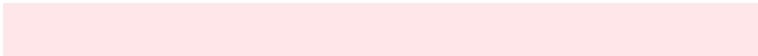


# Sweetspot

The Sweet Spot groups the original color and five complimentary colors.



15244453



16770793



14589160



8417394



0



8421504



# Same Dimension

The Same Dimension uses a secret algorithm to generate beautiful new colors.



15244453



16751783



15251612



7563113



11730965



3342342



# Inverse Universe

The Inverse Universe completely reimagines the original color for something new.



15244453



16751783



10276072



7563113



11730965

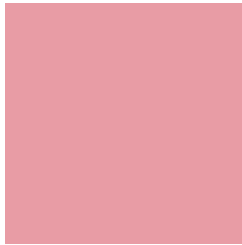


3342342



# Previews

## White Background



This preview shows how the Decimal color 15244453 looks on a white background.

## Color Contrast Check

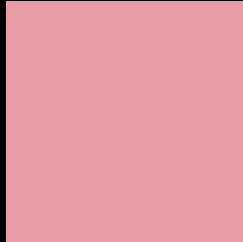
Large Text (above 18pt) WCAG AA × Fail

Any Text WCAG AA × Fail

Large Text (above 18pt) WCAG AAA × Fail

Any Text WCAG AAA × Fail

# Black Background



This preview shows how the Decimal color 15244453 looks on a black background.

## Color Contrast Check

Large Text (above 18pt) WCAG AA ✓ Pass

Any Text WCAG AA ✓ Pass

Large Text (above 18pt) WCAG AAA ✓ Pass

Any Text WCAG AAA ✓ Pass

If you want to check with other color combinations, try the [Color Contrast Checker](#).



## Decimal 15244453 Background



This preview shows how black text looks on a background with the Decimal color 15244453.



This preview shows how white text looks on a background with the Decimal color 15244453.

# Color Blindness Simulation

Color vision deficiency is a very complex topic, and I could not describe the different causes any better than Wikipedia does, so if you want to learn more, you should check out their [article about color blindness](#).

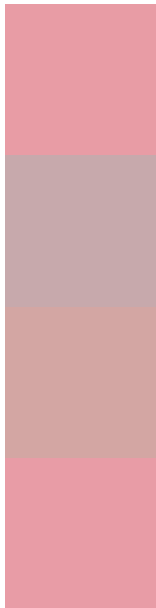
## Dichromacy





**Tritanopia**  
15244455

# Trichromacy



**Original Color**  
15244453

**Protanomaly**  
13085100

**Deuteranomaly**  
13870755

**Tritanomaly**  
15244454

# Monochromacy



**Original Color**  
15244453

**Achromatopsia**  
11842740

**Achromatomaly**  
13085615

# CSS Examples

## Text

The CSS property to change the color of the text to Decimal 15244453 is called "color". The color property can be set on classes, ids or directly on the HTML element.

This example shows how text in the color #E89CA5 looks like.

```
.text, #text, p{  
    color:#E89CA5  
}
```

If you want to add a text shadow in that color use the text-shadow property, you can generate a text shadow directly with our [CSS Text Shadow Generator](#).

Here you see how black text with a 4 pixel #E89CA5 colored shadow looks like.

```
.shadow{ text-shadow: 4px 4px 2px #E89CA5
}
```

## Border

The CSS property to change the border of an element to Decimal 15244453 is called "border". The border property can be set on classes, ids or directly on the HTML element.

This example shows the color as border, it can be applied via the CSS property "border" or "border-color".

```
.border, #border, table{ border:4px solid
#E89CA5 }
```

If only the border color should be changed use the property `border-color`.

```
.border{ border-color:#E89CA5 }
```

If you want to add a box shadow in that color use:

Here you see how a box with a 4 pixel #E89CA5 colored shadow looks like.

```
.boxshadow{ -moz-box-shadow:4px 4px 4px  
4px #E89CA5; -webkit-box-shadow:4px 4px  
4px 4px #E89CA5; box-shadow:4px 4px 4px  
4px #E89CA5 }
```

# Background

The CSS property to change the background color of an element to Decimal 15244453 is called "background". The background property can be set on classes, ids or directly on the HTML element.

```
.background, #background, body{  
background:#E89CA5 }
```

If only the background color should be changed can be used:

```
.background{ background-color:#E89CA5 }
```

This example shows the color as background, it is applied via the CSS property "background".

To optimize and compress your CSS code, you can use our [online CSS compressor and optimizer](#) based on csstidy. If you want to create a linear or radial gradient as background or border, check our [CSS Gradient Generator](#).



Hey! You found this booklet interesting? Support Converting Colors with the new Membership Option!

The pro membership hides all ads, plus gives you double the colors in the color bucket, and more awesome pro features!

**[Learn more, Memberships starting at \\$2.50/m!](#)**

**Follow me  
on Twitter!**

@ConvertingColor