

Converting Colors

Decimal(15255495)

Have a look what the booklet for
Decimal(15255495) contains.

Decimal(15255495)	3
<i>Conversions</i>	4
<i>Details</i>	6
<i>Harmonies</i>	11
<i>Previews</i>	23
<i>Color Blindness Simulation</i>	26
<i>CSS Examples</i>	29

Color

Decimal(15255495)

Conversions

Conversions Part 1

Format	Color
Hex	E8C7C7
RGB	232, 199, 199
RGB Percent	91%, 78%, 78%
CMY	0.0902, 0.2196, 0.2196
CMYK	0.00, 0.14, 0.14, 0.09
HSL	0°, 42%, 85%
HSV	0°, 14%, 91%
XYZ	64.0109, 62.1262, 62.6506
YIQ	208.8670, 19.6680, 6.9960

Conversions

Conversions Part 2

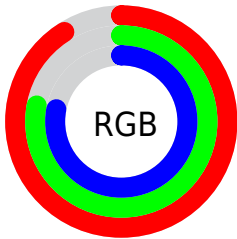
Format	Color
R _Y B	232, 199, 199
Decimal	15255495
CIE Lab	82.98, 11.63, 4.31
CIE LCh	83, 12.402, 20.324
Yxy	62.1262, 0.3391, 0.3291
Android (android.graphics.Color)	4293445575 (0xFFE8C7C7)
YUV	208.8670, -4.8644, 20.2876
Hunter-Lab	78.8202, 7.0270, 8.0471

Details

The Decimal color **15255495** is a light color, and the websafe version is hex **FFCCCC**. A complement of this color would be **13101288**, and the grayscale version is **13750737**.

A 20% lighter version of the original color is **16777215**, and **11571601** is the 20% darker color. If you saturate the color by 10%, you get **15249584**, and if you desaturate by 10%, it is **15261406**.

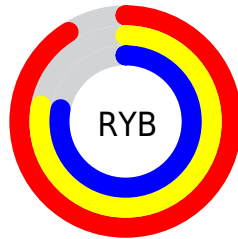
Distribution



Red (91%)

Green (78%)

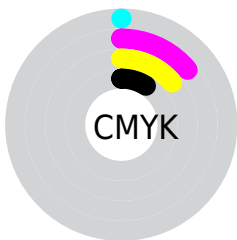
Blue (78%)



Red (91%)

Yellow (78%)

Blue (78%)

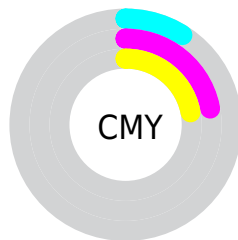


Cyan (0%)

Magenta (14%)

Yellow (14%)

Black (9%)



Cyan (9%)

Magenta (22%)

Yellow (22%)

Brightness & Saturation Gradients

These gradients show how the Decimal color 15255495 changes by changing the brightness by 10 percent. The first figure shows a shift by +10% for each color and the second figure -10%.

Similar to the brightness gradients but the following saturation gradients show a change of the Decimal color 15255495 by changing the saturation by 10% instead.

15255495

15255495

16777215

13413548

11571601

9795448

8085343

6440775

4862001

3283740

2031873

0

 15255495

 15255495

 15249584

 15261406

 15243673

 15267317

 15237505

 15269887

 15231594

 15225683

 15219772

 15213861

 15207693

 15204352

Harmonies

Analogous

The Analogous color harmony consists of three colors that are next to each other on the color wheel.



14993363



15255495



15059389

Triad

The Triadic color harmony groups three colors that are evenly spaced from another and form a triangle on the color wheel.



15255495



12768447



12505573

Complementary

The Complementary color scheme is a pair of colors which are on the opposite of each other on the color wheel.



15255495



13101288

Split Complementary

Split-complementary colors differ from the complementary color scheme. The scheme consists of three colors, the original color and two neighbors of the complement color.



11850976



15255495



12047818

Square

The Square scheme is like the rectangle color scheme, but the four colors are evenly spaced on the color wheel.



15255495



13684921



11720406



13422052

Rectangle

The Rectangle color scheme consists of four colors that form a rectangle on the color wheel.



15255495



14732217



11720406



12243684

Sweetspot

The Sweet Spot groups the original color and five complimentary colors.



15255495



16774645



15255528



8419705



0



8421504

Same Dimension

The Same Dimension uses a secret algorithm to generate beautiful new colors.



15255495



16766164



15259847



7563111



11730944



3342336

Inverse Universe

The Inverse Universe completely reimagines the original color for something new.



13101288



13959167



13097192



6779763



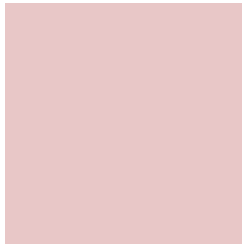
46003



13107

Previews

White Background



This preview shows how the Decimal color 15255495 looks on a white background.

Color Contrast Check

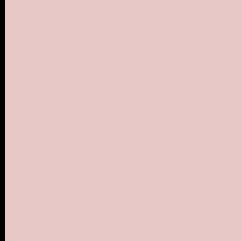
Large Text (above 18pt) WCAG AA × Fail

Any Text WCAG AA × Fail

Large Text (above 18pt) WCAG AAA × Fail

Any Text WCAG AAA × Fail

Black Background



This preview shows how the Decimal color 15255495 looks on a black background.

Color Contrast Check

Large Text (above 18pt) WCAG AA ✓ Pass

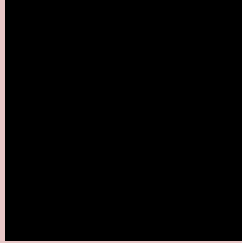
Any Text WCAG AA ✓ Pass

Large Text (above 18pt) WCAG AAA ✓ Pass

Any Text WCAG AAA ✓ Pass

If you want to check with other color combinations, try the [Color Contrast Checker](#).

Decimal 15255495 Background



This preview shows how black text looks on a background with the Decimal color 15255495.




This preview shows how white text looks on a background with the Decimal color 15255495.

Color Blindness Simulation

Color vision deficiency is a very complex topic, and I could not describe the different causes any better than Wikipedia does, so if you want to learn more, you should check out their [article about color blindness](#).

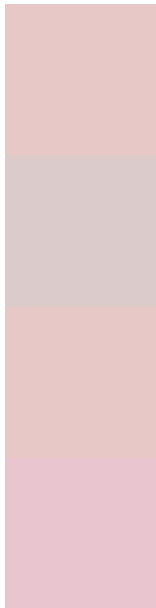
Dichromacy





Tritanopia
15386068

Trichromacy



Original Color
15255495

Protanomaly
14404554

Deuteranomaly
15190215

Tritanomaly
15320783

Monochromacy



Original Color
15255495

Achromatopsia
13750737

Achromatomaly
14273997

CSS Examples

Text

The CSS property to change the color of the text to Decimal 15255495 is called "color". The color property can be set on classes, ids or directly on the HTML element.

This example shows how text in the color #E8C7C7 looks like.

```
.text, #text, p{  
  color:#E8C7C7  
}
```

If you want to add a text shadow in that color use the text-shadow property, you can generate a text shadow directly with our [CSS Text Shadow Generator](#).

Here you see how black text with a 4 pixel #E8C7C7 colored shadow looks like.

```
.shadow{ text-shadow: 4px 4px 2px #E8C7C7
}
```

Border

The CSS property to change the border of an element to Decimal 15255495 is called "border". The border property can be set on classes, ids or directly on the HTML element.

This example shows the color as border, it can be applied via the CSS property "border" or "border-color".

```
.border, #border, table{ border:4px solid
#E8C7C7 }
```

If only the border color should be changed use the property `border-color`.

```
.border{ border-color:#E8C7C7 }
```

If you want to add a box shadow in that color use:

Here you see how a box with a 4 pixel #E8C7C7 colored shadow looks like.

```
.boxshadow{ -moz-box-shadow:4px 4px 4px  
4px #E8C7C7; -webkit-box-shadow:4px 4px  
4px 4px #E8C7C7; box-shadow:4px 4px 4px  
4px #E8C7C7 }
```

Background

The CSS property to change the background color of an element to Decimal 15255495 is called "background". The background property can be set on classes, ids or directly on the HTML element.

```
.background, #background, body{  
background:#E8C7C7 }
```

If only the background color should be changed can be used:

```
.background{ background-color:#E8C7C7 }
```

This example shows the color as background, it is applied via the CSS property "background".

To optimize and compress your CSS code, you can use our [online CSS compressor and optimizer](#) based on csstidy. If you want to create a linear or radial gradient as background or border, check our [CSS Gradient Generator](#).

Hey! You found this booklet interesting? Support Converting Colors with the new Membership Option!

The pro membership hides all ads, plus gives you double the colors in the color bucket, and more awesome pro features!

[Learn more, Memberships starting at \\$2.50/m!](#)

**Follow me
on Twitter!**

@ConvertingColor