

# Converting Colors

Decimal(15256780)

Have a look what the booklet for  
Decimal(15256780) contains.

<b>Decimal(15256780)</b> .....	3
<i><b>Conversions</b></i> .....	4
<i><b>Details</b></i> .....	6
<i><b>Harmonies</b></i> .....	11
<i><b>Previews</b></i> .....	23
<i><b>Color Blindness Simulation</b></i> .....	26
<i><b>CSS Examples</b></i> .....	29

# **Color**

**Decimal(15256780)**

# Conversions

## Conversions Part 1

Format	Color
Hex	E8CCCC
RGB	232, 204, 204
RGB Percent	91%, 80%, 80%
CMY	0.0902, 0.2000, 0.2000
CMYK	0.00, 0.12, 0.12, 0.09
HSL	0°, 38%, 85%
HSV	0°, 12%, 91%
XYZ	65.7707, 64.7012, 66.1488
YIQ	212.3720, 16.6880, 5.9360

# Conversions

## Conversions Part 2

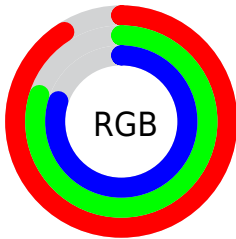
Format	Color
R <sub>Y</sub> B	232, 204, 204
Decimal	15256780
CIE Lab	84.33, 9.80, 3.59
CIE LCh	84, 10.434, 20.145
Yxy	64.7012, 0.3345, 0.3291
Android (android.graphics.Color)	4293446860 (0xFFE8CCCC)
YUV	212.3720, -4.1274, 17.2138
Hunter-Lab	80.4370, 5.1886, 7.5477

# Details

The Decimal color **15256780** is a light color, and the websafe version is hex **FFCCCC**. A complement of this color would be **13428968**, and the grayscale version is **13948116**.

A 20% lighter version of the original color is **16777215**, and **11572886** is the 20% darker color. If you saturate the color by 10%, you get **15250869**, and if you desaturate by 10%, it is **15262691**.

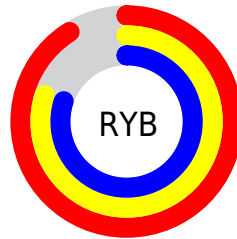
# Distribution



Red (91%)

Green (80%)

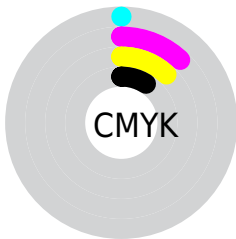
Blue (80%)



Red (91%)

Yellow (80%)

Blue (80%)

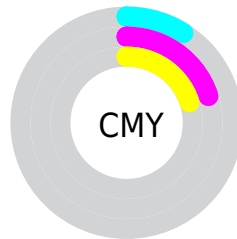


Cyan (0%)

Magenta (12%)

Yellow (12%)

Black (9%)



Cyan (9%)

Magenta (20%)

Yellow (20%)

# Brightness & Saturation Gradients

These gradients show how the Decimal color 15256780 changes by changing the brightness by 10 percent. The first figure shows a shift by +10% for each color and the second figure -10%.

Similar to the brightness gradients but the following saturation gradients show a change of the Decimal color 15256780 by changing the saturation by 10% instead.



15256780

15256780

16777215

13414833

11572886

9796732

8086371

6441803

4863029

3350304

2033671

0

15256780

15256780

15250869

15262691

15244958

15268602

15238790

15269887

15232879

15226968

15221057

15215146

15208978

15204352

# Harmonies

## Analogous

The Analogous color harmony consists of three colors that are next to each other on the color wheel.



15060182



15256780



15126212

# Triad

The Triadic color harmony groups three colors that are evenly spaced from another and form a triangle on the color wheel.



15256780



13162438



12965093

# Complementary

The Complementary color scheme is a pair of colors which are on the opposite of each other on the color wheel.



15256780



13428968

# Split Complementary

Split-complementary colors differ from the complementary color scheme. The scheme consists of three colors, the original color and two neighbors of the complement color.



12376033



15256780



12572879

# Square

The Square scheme is like the rectangle color scheme, but the four colors are evenly spaced on the color wheel.



15256780



13882560



12245209



13685221

# Rectangle

The Rectangle color scheme consists of four colors that form a rectangle on the color wheel.



15256780



14799040



12245209



12703205



# Sweetspot

The Sweet Spot groups the original color and five complimentary colors.



15256780



16774645



15256808



8419705



0



8421504



# Same Dimension

The Same Dimension uses a secret algorithm to generate beautiful new colors.



15256780



16767963



15260364



7563111



11730944



3342336



# Inverse Universe

The Inverse Universe completely reimagines the original color for something new.



13428968



14417919



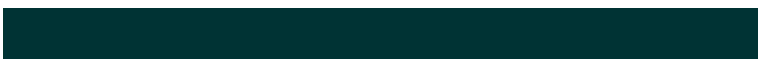
13425384



6779763



46003

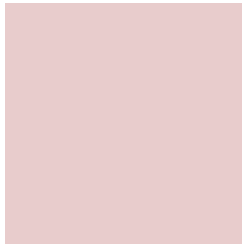


13107



# Previews

## White Background



This preview shows how the Decimal color 15256780 looks on a white background.

## Color Contrast Check

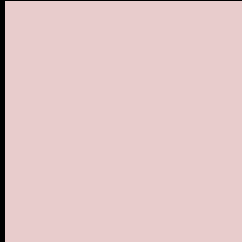
Large Text (above 18pt) WCAG AA × Fail

Any Text WCAG AA × Fail

Large Text (above 18pt) WCAG AAA × Fail

Any Text WCAG AAA × Fail

# Black Background



This preview shows how the Decimal color 15256780 looks on a black background.

## Color Contrast Check

Large Text (above 18pt) WCAG AA ✓ Pass

Any Text WCAG AA ✓ Pass

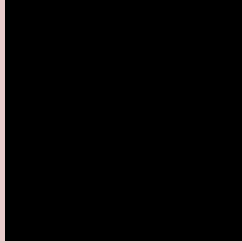
Large Text (above 18pt) WCAG AAA ✓ Pass

Any Text WCAG AAA ✓ Pass

If you want to check with other color combinations, try the [Color Contrast Checker](#).



## Decimal 15256780 Background



This preview shows how black text looks on a background with the Decimal color 15256780.



This preview shows how white text looks on a background with the Decimal color 15256780.

# Color Blindness Simulation

Color vision deficiency is a very complex topic, and I could not describe the different causes any better than Wikipedia does, so if you want to learn more, you should check out their [article about color blindness](#).


## Dichromacy



**Original Color**  
15256780

**Protanopia**  
14144207

**Deuteranopia**  
15322316



**Tritanopia**  
15387354

# Trichromacy



**Original Color**  
15256780

**Protanomaly**  
14536910

**Deuteranomaly**  
15322316

**Tritanomaly**  
15322069

# Monochromacy



**Original Color**  
15256780

**Achromatopsia**  
13948116

**Achromatomaly**  
14406097

# CSS Examples

## Text

The CSS property to change the color of the text to Decimal 15256780 is called "color". The color property can be set on classes, ids or directly on the HTML element.

This example shows how text in the color #E8CCCC looks like.

```
.text, #text, p{  
  color:#E8CCCC  
}
```

If you want to add a text shadow in that color use the text-shadow property, you can generate a text shadow directly with our [CSS Text Shadow Generator](#).

Here you see how black text with a 4 pixel #E8CCCC colored shadow looks like.

```
.shadow{ text-shadow: 4px 4px 2px #E8CCCC }  
}
```

## Border

The CSS property to change the border of an element to Decimal 15256780 is called "border". The border property can be set on classes, ids or directly on the HTML element.

This example shows the color as border, it can be applied via the CSS property "border" or "border-color".

```
.border, #border, table{ border:4px solid #E8CCCC }  
}
```

If only the border color should be changed use the property `border-color`.

```
.border{ border-color:#E8CCCC }
```

If you want to add a box shadow in that color use:

Here you see how a box with a 4 pixel #E8CCCC colored shadow looks like.

```
.boxshadow{ -moz-box-shadow:4px 4px 4px  
4px #E8CCCC; -webkit-box-shadow:4px 4px  
4px 4px #E8CCCC; box-shadow:4px 4px 4px  
4px #E8CCCC }
```

# Background

The CSS property to change the background color of an element to Decimal 15256780 is called "background". The background property can be set on classes, ids or directly on the HTML element.

```
.background, #background, body{  
background:#E8CCCC }
```

If only the background color should be changed can be used:

```
.background{ background-color:#E8CCCC }
```

This example shows the color as background, it is applied via the CSS property "background".

To optimize and compress your CSS code, you can use our [online CSS compressor and optimizer](#) based on csstidy. If you want to create a linear or radial gradient as background or border, check our [CSS Gradient Generator](#).



Hey! You found this booklet interesting? Support Converting Colors with the new Membership Option!

The pro membership hides all ads, plus gives you double the colors in the color bucket, and more awesome pro features!

**[Learn more, Memberships starting at \\$2.50/m!](#)**

**Follow me  
on Twitter!**

@ConvertingColor