

Converting Colors

Decimal(15258564)

Have a look what the booklet for
Decimal(15258564) contains.

Decimal(15258564)	3
<i>Conversions</i>	4
<i>Details</i>	6
<i>Harmonies</i>	11
<i>Previews</i>	23
<i>Color Blindness Simulation</i>	26
<i>CSS Examples</i>	29

Color

Decimal(15258564)

Conversions

Conversions Part 1

Format	Color
Hex	E8D3C4
RGB	232, 211, 196
RGB Percent	91%, 83%, 77%
CMY	0.0902, 0.1725, 0.2314
CMYK	0.00, 0.09, 0.16, 0.09
HSL	25°, 44%, 84%
HSV	25°, 16%, 91%
XYZ	66.5368, 67.7299, 61.7909
YIQ	215.5690, 17.3310, -0.2130

Conversions

Conversions Part 2

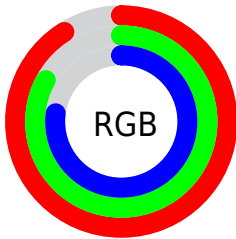
Format	Color
RYB	232, 222, 196
Decimal	15258564
CIELab	85.87, 4.86, 10.06
CIELCh	86, 11.169, 64.203
Yxy	67.7299, 0.3394, 0.3455
Android (android.graphics.Color)	4293448644 (0xFFE8D3C4)
YUV	215.5690, -9.6475, 14.4100
Hunter-Lab	82.2982, 0.2927, 13.0928

Details

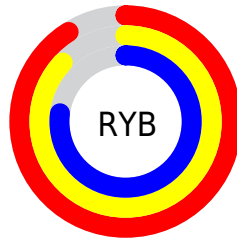
The Decimal color **15258564** is a light color, and the websafe version is hex **CCCCCC**. A complement of this color would be **12900840**, and the grayscale version is **14211288**.

A 20% lighter version of the original color is **16777213**, and **11574670** is the 20% darker color. If you saturate the color by 10%, you get **15254957**, and if you desaturate by 10%, it is **15262171**.

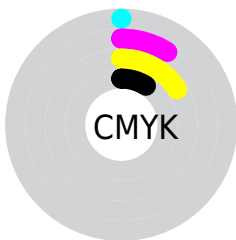
Distribution



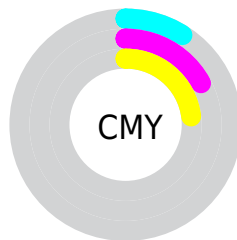
- Red (91%)
- Green (83%)
- Blue (77%)



- Red (91%)
- Yellow (87%)
- Blue (77%)



- Cyan (0%)
- Magenta (9%)
- Yellow (16%)
- Black (9%)

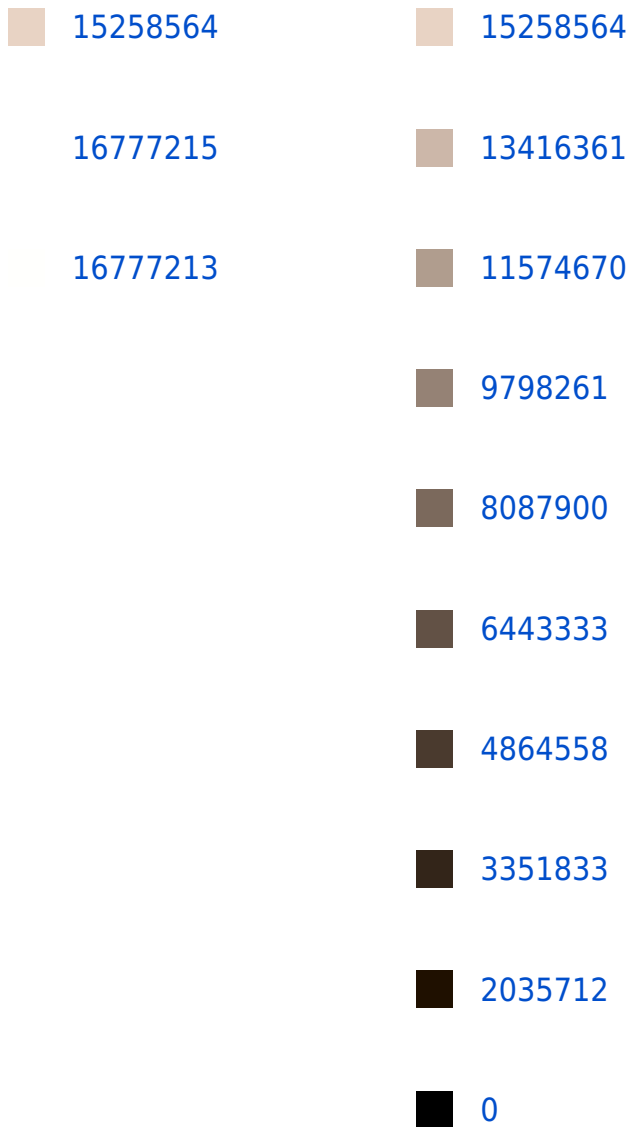


- Cyan (9%)
- Magenta (17%)
- Yellow (23%)

Brightness & Saturation Gradients

These gradients show how the Decimal color 15258564 changes by changing the brightness by 10 percent. The first figure shows a shift by +10% for each color and the second figure -10%.

Similar to the brightness gradients but the following saturation gradients show a change of the Decimal color 15258564 by changing the saturation by 10% instead.



 15258564

 15258564

 15254957

 15262171

 15251606

 15265522

 15247998

 15269119

 15244647

 15269887

 15241040

 15237689

 15234082

 15230730

 15229184

Harmonies

Analogous

The Analogous color harmony consists of three colors that are next to each other on the color wheel.



15585483



15258564



14603970

Triad

The Triadic color harmony groups three colors that are evenly spaced from another and form a triangle on the color wheel.



15258564



12508632



14406888

Complementary

The Complementary color scheme is a pair of colors which are on the opposite of each other on the color wheel.



15258564



12900840

Split Complementary

Split-complementary colors differ from the complementary color scheme. The scheme consists of three colors, the original color and two neighbors of the complement color.



13555692



15258564



12442850

Square

The Square scheme is like the rectangle color scheme, but the four colors are evenly spaced on the color wheel.



15258564



13032653



12770025



15127008

Rectangle

The Rectangle color scheme consists of four colors that form a rectangle on the color wheel.



15258564



14080451



12770025



14079466

Sweetspot

The Sweet Spot groups the original color and five complimentary colors.



15258564



16775410



15254746



8420216



0



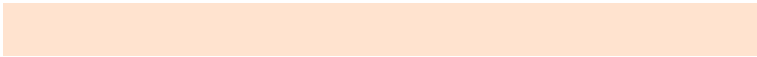
8421504

Same Dimension

The Same Dimension uses a secret algorithm to generate beautiful new colors.



15258564



16769999



15262916



7564391



11749888



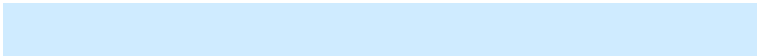
3347712

Inverse Universe

The Inverse Universe completely reimagines the original color for something new.



12900840



13626367



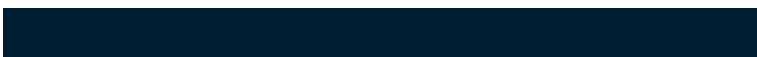
12896488



6778483



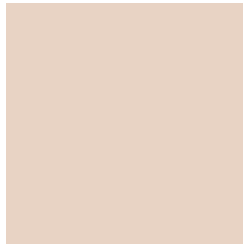
26803



7731

Previews

White Background



This preview shows how the Decimal color 15258564 looks on a white background.

Color Contrast Check

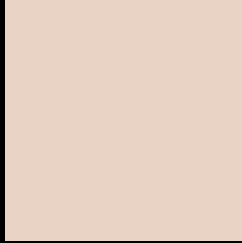
Large Text (above 18pt) WCAG AA × Fail

Any Text WCAG AA × Fail

Large Text (above 18pt) WCAG AAA × Fail

Any Text WCAG AAA × Fail

Black Background



This preview shows how the Decimal color 15258564 looks on a black background.

Color Contrast Check

Large Text (above 18pt) WCAG AA ✓ Pass

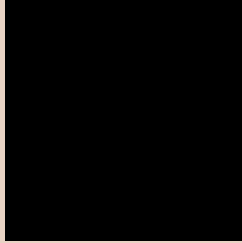
Any Text WCAG AA ✓ Pass

Large Text (above 18pt) WCAG AAA ✓ Pass

Any Text WCAG AAA ✓ Pass

If you want to check with other color combinations, try the [Color Contrast Checker](#).

Decimal 15258564 Background



This preview shows how black text looks on a background with the Decimal color 15258564.




This preview shows how white text looks on a background with the Decimal color 15258564.

Color Blindness Simulation

Color vision deficiency is a very complex topic, and I could not describe the different causes any better than Wikipedia does, so if you want to learn more, you should check out their [article about color blindness](#).

Dichromacy





Tritanopia
15519711

Trichromacy



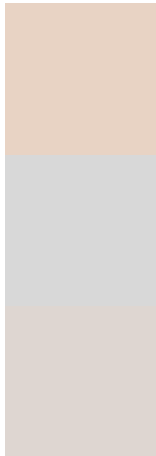
Original Color
15258564

Protanomaly
14865861

Deuteranomaly
15651013

Tritanomaly
15454421

Monochromacy



Original Color
15258564

Achromatopsia
14211288

Achromatomaly
14603985

CSS Examples

Text

The CSS property to change the color of the text to Decimal 15258564 is called "color". The color property can be set on classes, ids or directly on the HTML element.

This example shows how text in the color #E8D3C4 looks like.

```
.text, #text, p{  
    color:#E8D3C4  
}
```

If you want to add a text shadow in that color use the text-shadow property, you can generate a text shadow directly with our [CSS Text Shadow Generator](#).

Here you see how black text with a 4 pixel #E8D3C4 colored shadow looks like.

```
.shadow{ text-shadow: 4px 4px 2px #E8D3C4
}
```

Border

The CSS property to change the border of an element to Decimal 15258564 is called "border". The border property can be set on classes, ids or directly on the HTML element.

This example shows the color as border, it can be applied via the CSS property "border" or "border-color".

```
.border, #border, table{ border:4px solid
#E8D3C4 }
```

If only the border color should be changed use the property `border-color`.

```
.border{ border-color:#E8D3C4 }
```

If you want to add a box shadow in that color use:

Here you see how a box with a 4 pixel #E8D3C4 colored shadow looks like.

```
.boxshadow{ -moz-box-shadow:4px 4px 4px  
4px #E8D3C4; -webkit-box-shadow:4px 4px  
4px 4px #E8D3C4; box-shadow:4px 4px 4px  
4px #E8D3C4 }
```

Background

The CSS property to change the background color of an element to Decimal 15258564 is called "background". The background property can be set on classes, ids or directly on the HTML element.

```
.background, #background, body{  
background:#E8D3C4 }
```

If only the background color should be changed can be used:

```
.background{ background-color:#E8D3C4 }
```

This example shows the color as background, it is applied via the CSS property "background".

To optimize and compress your CSS code, you can use our [online CSS compressor and optimizer](#) based on csstidy. If you want to create a linear or radial gradient as background or border, check our [CSS Gradient Generator](#).

Hey! You found this booklet interesting? Support Converting Colors with the new Membership Option!

The pro membership hides all ads, plus gives you double the colors in the color bucket, and more awesome pro features!

[Learn more, Memberships starting at \\$2.50/m!](#)

**Follow me
on Twitter!**

@ConvertingColor