

Converting Colors

Decimal(15258831)

Have a look what the booklet for
Decimal(15258831) contains.

| | |
|--|----|
| Decimal(15258831) | 3 |
| <i>Conversions</i> | 4 |
| <i>Details</i> | 6 |
| <i>Harmonies</i> | 11 |
| <i>Previews</i> | 23 |
| <i>Color Blindness Simulation</i> | 26 |
| <i>CSS Examples</i> | 29 |

Color

Decimal(15258831)

Conversions

Conversions Part 1

| Format | Color |
|-------------|---------------------------|
| Hex | E8D4CF |
| RGB | 232, 212, 207 |
| RGB Percent | 91%, 83%, 81% |
| CMY | 0.0902, 0.1686, 0.1882 |
| CMYK | 0.00, 0.09, 0.11, 0.09 |
| HSL | 12°, 35%, 86% |
| HSV | 12°, 11%, 91% |
| XYZ | 68.0847, 68.7478, 68.7127 |
| YIQ | 217.4100, 13.5250, 2.6850 |

Conversions

Conversions Part 2

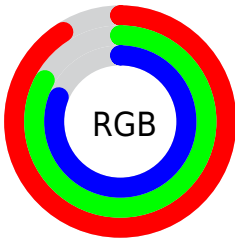
| Format | Color |
|-------------------------------------|--|
| RYB | 232, 213, 207 |
| Decimal | 15258831 |
| CIELab | 86.38, 6.09, 4.97 |
| CIELCh | 86, 7.857, 39.204 |
| Yxy | 68.7478, 0.3312, 0.3345 |
| Android (android.graphics.Color) | 4293448911 (0xFFE8D4CF) |
| YUV | 217.4100, -5.1321, 12.7954 |
| Hunter-Lab | 82.9143, 1.4745, 8.9052 |

Details

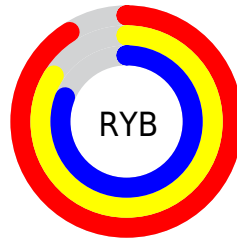
The Decimal color **15258831** is a light color, and the websafe version is hex **CCCCCC**. A complement of this color would be **13624296**, and the grayscale version is **14277081**.

A 20% lighter version of the original color is **16777215**, and **11574681** is the 20% darker color. If you saturate the color by 10%, you get **15253944**, and if you desaturate by 10%, it is **15263718**.

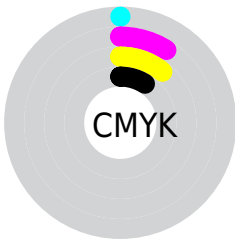
Distribution



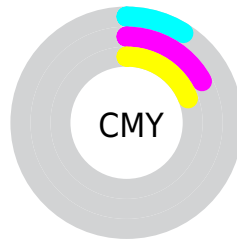
- Red (91%)
- Green (83%)
- Blue (81%)



- Red (91%)
- Yellow (84%)
- Blue (81%)



- Cyan (0%)
- Magenta (9%)
- Yellow (11%)
- Black (9%)



- Cyan (9%)
- Magenta (17%)
- Yellow (19%)

Brightness & Saturation Gradients

These gradients show how the Decimal color 15258831 changes by changing the brightness by 10 percent. The first figure shows a shift by +10% for each color and the second figure -10%.

Similar to the brightness gradients but the following saturation gradients show a change of the Decimal color 15258831 by changing the saturation by 10% instead.

15258831

15258831

16777215

13416627

11574681

9798527

8153702

6443598

4864823

3417378

2035979

0

 15258831

 15258831

 15253944

 15263718

 15249313

 15268349

 15244425

 15269887

 15239794

 15234907

 15230276

 15225389

 15220757

 15216128

Harmonies

Analogous

The Analogous color harmony consists of three colors that are next to each other on the color wheel.



15258582



15258831



14997194

Triad

The Triadic color harmony groups three colors that are evenly spaced from another and form a triangle on the color wheel.



15258831



13425875



13883623

Complementary

The Complementary color scheme is a pair of colors which are on the opposite of each other on the color wheel.



15258831



13624296

Split Complementary

Split-complementary colors differ from the complementary color scheme. The scheme consists of three colors, the original color and two neighbors of the complement color.



13359846



15258831



13098458

Square

The Square scheme is like the rectangle color scheme, but the four colors are evenly spaced on the color wheel.



15258831



13884364



13098209



14538468

Rectangle

The Rectangle color scheme consists of four colors that form a rectangle on the color wheel.



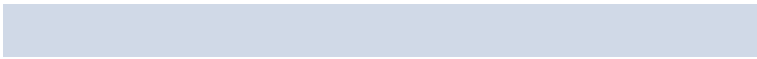
15258831



14669769



13098209



13687271

Sweetspot

The Sweet Spot groups the original color and five complimentary colors.



15258831



16775671



15257571



8420218



0



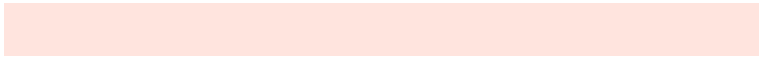
8421504

Same Dimension

The Same Dimension uses a secret algorithm to generate beautiful new colors.



15258831



16770270



15262159



7563879



11740160



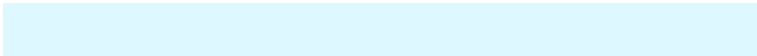
3344896

Inverse Universe

The Inverse Universe completely reimagines the original color for something new.



13624296



14612735



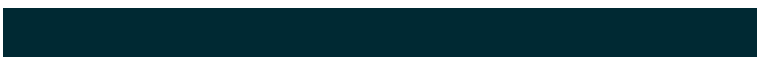
13620968



6778995



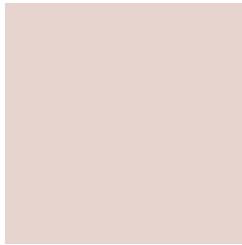
36787



10547

Previews

White Background



This preview shows how the Decimal color 15258831 looks on a white background.

Color Contrast Check

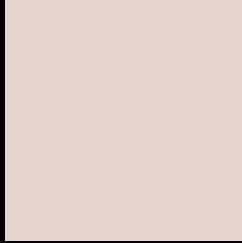
Large Text (above 18pt) WCAG AA × Fail

Any Text WCAG AA × Fail

Large Text (above 18pt) WCAG AAA × Fail

Any Text WCAG AAA × Fail

Black Background



This preview shows how the Decimal color 15258831 looks on a black background.

Color Contrast Check

Large Text (above 18pt) WCAG AA ✓ Pass

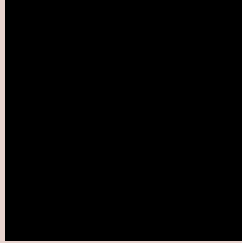
Any Text WCAG AA ✓ Pass

Large Text (above 18pt) WCAG AAA ✓ Pass

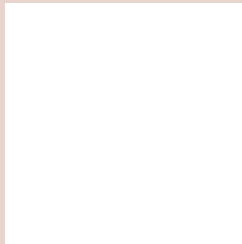
Any Text WCAG AAA ✓ Pass

If you want to check with other color combinations, try the [Color Contrast Checker](#).

Decimal 15258831 Background



This preview shows how black text looks on a background with the Decimal color 15258831.

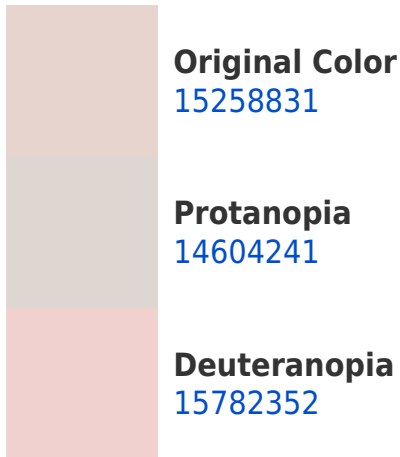



This preview shows how white text looks on a background with the Decimal color 15258831.

Color Blindness Simulation

Color vision deficiency is a very complex topic, and I could not describe the different causes any better than Wikipedia does, so if you want to learn more, you should check out their [article about color blindness](#).

Dichromacy





Tritanopia
15454690

Trichromacy



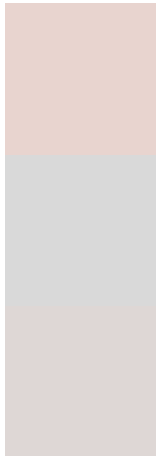
Original Color
15258831

Protanomaly
14866128

Deuteranomaly
15586000

Tritanomaly
15389403

Monochromacy



Original Color
15258831

Achromatopsia
14277081

Achromatomaly
14604245

CSS Examples

Text

The CSS property to change the color of the text to Decimal 15258831 is called "color". The color property can be set on classes, ids or directly on the HTML element.

This example shows how text in the color #E8D4CF looks like.

```
.text, #text, p{  
  color:#E8D4CF  
}
```

If you want to add a text shadow in that color use the text-shadow property, you can generate a text shadow directly with our [CSS Text Shadow Generator](#).

Here you see how black text with a 4 pixel #E8D4CF colored shadow looks like.

```
.shadow{ text-shadow: 4px 4px 2px #E8D4CF
}
```

Border

The CSS property to change the border of an element to Decimal 15258831 is called "border". The border property can be set on classes, ids or directly on the HTML element.

This example shows the color as border, it can be applied via the CSS property "border" or "border-color".

```
.border, #border, table{ border:4px solid
#E8D4CF }
```

If only the border color should be changed use the property `border-color`.

```
.border{ border-color:#E8D4CF }
```

If you want to add a box shadow in that color use:

Here you see how a box with a 4 pixel #E8D4CF colored shadow looks like.

```
.boxshadow{ -moz-box-shadow:4px 4px 4px  
4px #E8D4CF; -webkit-box-shadow:4px 4px  
4px 4px #E8D4CF; box-shadow:4px 4px 4px  
4px #E8D4CF }
```

Background

The CSS property to change the background color of an element to Decimal 15258831 is called "background". The background property can be set on classes, ids or directly on the HTML element.

```
.background, #background, body{  
background:#E8D4CF }
```

If only the background color should be changed can be used:

```
.background{ background-color:#E8D4CF }
```

This example shows the color as background, it is applied via the CSS property "background".

To optimize and compress your CSS code, you can use our [online CSS compressor and optimizer](#) based on csstidy. If you want to create a linear or radial gradient as background or border, check our [CSS Gradient Generator](#).

Hey! You found this booklet interesting? Support Converting Colors with the new Membership Option!

The pro membership hides all ads, plus gives you double the colors in the color bucket, and more awesome pro features!

[Learn more, Memberships starting at \\$2.50/m!](#)

**Follow me
on Twitter!**

@ConvertingColor