

Converting Colors

Decimal(15259078)

Have a look what the booklet for
Decimal(15259078) contains.

Decimal(15259078)	3
<i>Conversions</i>	4
<i>Details</i>	6
<i>Harmonies</i>	11
<i>Previews</i>	23
<i>Color Blindness Simulation</i>	26
<i>CSS Examples</i>	29

Color

Decimal(15259078)

Conversions

Conversions Part 1

Format	Color
Hex	E8D5C6
RGB	232, 213, 198
RGB Percent	91%, 84%, 78%
CMY	0.0902, 0.1647, 0.2235
CMYK	0.00, 0.08, 0.15, 0.09
HSL	26°, 42%, 84%
HSV	26°, 15%, 91%
XYZ	67.2660, 68.8215, 63.1647
YIQ	216.9710, 16.1390, -0.6370

Conversions

Conversions Part 2

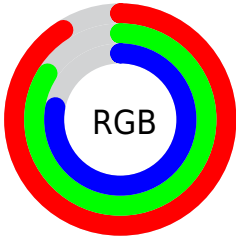
Format	Color
R _Y B	232, 225, 198
Decimal	15259078
CIE Lab	86.42, 4.13, 9.78
CIE LCh	86, 10.613, 67.098
Yxy	68.8215, 0.3376, 0.3454
Android (android.graphics.Color)	4293449158 (0xFFE8D5C6)
YUV	216.9710, -9.3527, 13.1804
Hunter-Lab	82.9587, -0.4434, 12.9278

Details

The Decimal color **15259078** is a light color, and the websafe version is hex **CCCCCC**. A complement of this color would be **13031912**, and the grayscale version is **14277081**.

A 20% lighter version of the original color is **16777215**, and **11574928** is the 20% darker color. If you saturate the color by 10%, you get **15255727**, and if you desaturate by 10%, it is **15262429**.

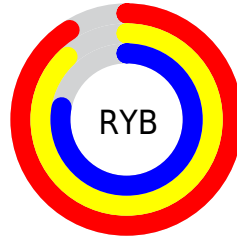
Distribution



Red (91%)

Green (84%)

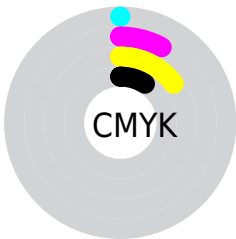
Blue (78%)



Red (91%)

Yellow (88%)

Blue (78%)

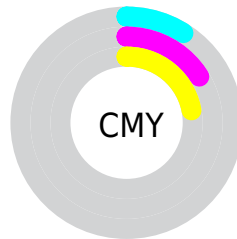


Cyan (0%)

Magenta (8%)

Yellow (15%)

Black (9%)



Cyan (9%)

Magenta (16%)

Yellow (22%)

Brightness & Saturation Gradients

These gradients show how the Decimal color 15259078 changes by changing the brightness by 10 percent. The first figure shows a shift by +10% for each color and the second figure -10%.

Similar to the brightness gradients but the following saturation gradients show a change of the Decimal color 15259078 by changing the saturation by 10% instead.

15259078

15259078

16777215

13416875

11574928

9798775

8088414

6443846

4865072

3352091

2036224

0

15259078

15259078

15255727

15262429

15252376

15265780

15249024

15269119

15245673

15269887

15242322

15238971

15235620

15232268

15230464

Harmonies

Analogous

The Analogous color harmony consists of three colors that are next to each other on the color wheel.



15651533



15259078



14604484

Triad

The Triadic color harmony groups three colors that are evenly spaced from another and form a triangle on the color wheel.



15259078



12705498



14538216

Complementary

The Complementary color scheme is a pair of colors which are on the opposite of each other on the color wheel.



15259078



13031912

Split Complementary

Split-complementary colors differ from the complementary color scheme. The scheme consists of three colors, the original color and two neighbors of the complement color.



13752556



15259078



12639972

Square

The Square scheme is like the rectangle color scheme, but the four colors are evenly spaced on the color wheel.



15259078



13164240



13032426



15258336

Rectangle

The Rectangle color scheme consists of four colors that form a rectangle on the color wheel.



15259078



14146246



13032426



14276330

Sweetspot

The Sweet Spot groups the original color and five complimentary colors.



15259078



16775669



15255257



8420473



0



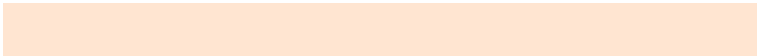
8421504

Same Dimension

The Same Dimension uses a secret algorithm to generate beautiful new colors.



15259078



16770513



15263430



7564391



11751168



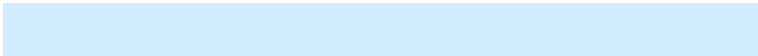
3348224

Inverse Universe

The Inverse Universe completely reimagines the original color for something new.



13031912



13757439



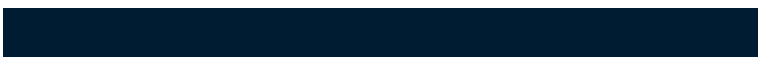
13027560



6778483



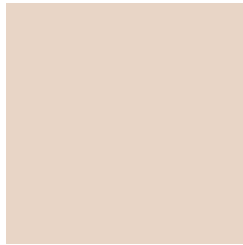
25779



7219

Previews

White Background



This preview shows how the Decimal color 15259078 looks on a white background.

Color Contrast Check

Large Text (above 18pt) WCAG AA × Fail

Any Text WCAG AA × Fail

Large Text (above 18pt) WCAG AAA × Fail

Any Text WCAG AAA × Fail

Black Background



This preview shows how the Decimal color 15259078 looks on a black background.

Color Contrast Check

Large Text (above 18pt) WCAG AA ✓ Pass

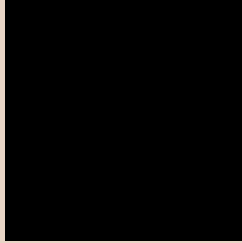
Any Text WCAG AA ✓ Pass

Large Text (above 18pt) WCAG AAA ✓ Pass

Any Text WCAG AAA ✓ Pass

If you want to check with other color combinations, try the [Color Contrast Checker](#).

Decimal 15259078 Background



This preview shows how black text looks on a background with the Decimal color 15259078.



This preview shows how white text looks on a background with the Decimal color 15259078.

Color Blindness Simulation

Color vision deficiency is a very complex topic, and I could not describe the different causes any better than Wikipedia does, so if you want to learn more, you should check out their [article about color blindness](#).

Dichromacy





Tritanopia
15520225

Trichromacy



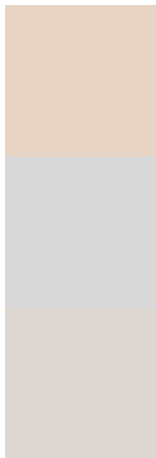
Original Color
15259078

Protanomaly
14931911

Deuteranomaly
15782599

Tritanomaly
15454935

Monochromacy



Original Color
15259078

Achromatopsia
14277081

Achromatomaly
14604498

CSS Examples

Text

The CSS property to change the color of the text to Decimal 15259078 is called "color". The color property can be set on classes, ids or directly on the HTML element.

This example shows how text in the color #E8D5C6 looks like.

```
.text, #text, p{  
    color:#E8D5C6  
}
```

If you want to add a text shadow in that color use the text-shadow property, you can generate a text shadow directly with our [CSS Text Shadow Generator](#).

Here you see how black text with a 4 pixel #E8D5C6 colored shadow looks like.

```
.shadow{ text-shadow: 4px 4px 2px #E8D5C6
}
```

Border

The CSS property to change the border of an element to Decimal 15259078 is called "border". The border property can be set on classes, ids or directly on the HTML element.

This example shows the color as border, it can be applied via the CSS property "border" or "border-color".

```
.border, #border, table{ border:4px solid
#E8D5C6 }
```

If only the border color should be changed use the property `border-color`.

```
.border{ border-color:#E8D5C6 }
```

If you want to add a box shadow in that color use:

Here you see how a box with a 4 pixel #E8D5C6 colored shadow looks like.

```
.boxshadow{ -moz-box-shadow:4px 4px 4px  
4px #E8D5C6; -webkit-box-shadow:4px 4px  
4px 4px #E8D5C6; box-shadow:4px 4px 4px  
4px #E8D5C6 }
```

Background

The CSS property to change the background color of an element to Decimal 15259078 is called "background". The background property can be set on classes, ids or directly on the HTML element.

```
.background, #background, body{  
background:#E8D5C6 }
```

If only the background color should be changed can be used:

```
.background{ background-color:#E8D5C6 }
```

This example shows the color as background, it is applied via the CSS property "background".

To optimize and compress your CSS code, you can use our [online CSS compressor and optimizer](#) based on csstidy. If you want to create a linear or radial gradient as background or border, check our [CSS Gradient Generator](#).

Hey! You found this booklet interesting? Support Converting Colors with the new Membership Option!

The pro membership hides all ads, plus gives you double the colors in the color bucket, and more awesome pro features!

[Learn more, Memberships starting at \\$2.50/m!](#)

**Follow me
on Twitter!**

@ConvertingColor