

# Converting Colors

Decimal(15292025)

Have a look what the booklet for  
Decimal(15292025) contains.

<b>Decimal(15292025)</b> .....	3
<i><b>Conversions</b></i> .....	4
<i><b>Details</b></i> .....	6
<i><b>Harmonies</b></i> .....	11
<i><b>Previews</b></i> .....	23
<i><b>Color Blindness Simulation</b></i> .....	26
<i><b>CSS Examples</b></i> .....	29

**Color**

**Decimal(15292025)**

# Conversions

## Conversions Part 1

Format	Color
Hex	E95679
RGB	233, 86, 121
RGB Percent	91%, 34%, 47%
CMY	0.0863, 0.6627, 0.5255
CMYK	0.00, 0.63, 0.48, 0.09
HSL	346°, 77%, 63%
HSV	346°, 63%, 91%
XYZ	40.3833, 25.3597, 20.8556
YIQ	133.9430, 76.3770, 42.0490

# Conversions

## Conversions Part 2

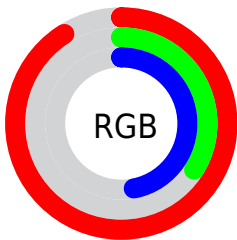
<b>Format</b>	<b>Color</b>
<b>R<sub>YB</sub></b>	233, 86, 121
Decimal	15292025
CIE <sub>Lab</sub>	57.42, 59.40, 11.31
CIE <sub>LCh</sub>	57, 60.470, 10.775
Yxy	25.3597, 0.4663, 0.2928
Android (android.graphics.Color)	4293482105 (0xFFE95679)
YUV	133.9430, -6.3809, 86.8730
Hunter-Lab	50.3584, 55.0149, 10.6963

# Details

The Decimal color **15292025** is a dark color, and the websafe version is hex **FF6699**. The color can be described as middle muted rose. A complement of this color would be **5695942**, and the grayscale version is **8816262**.

A 20% lighter version of the original color is **16748205**, and **11277385** is the 20% darker color. If you saturate the color by 10%, you get **15286119**, and if you desaturate by 10%, it is **15297931**.

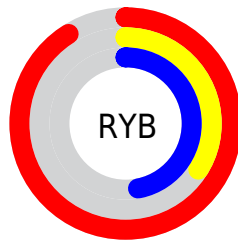
# Distribution



Red (91%)

Green (34%)

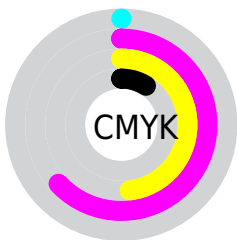
Blue (47%)



Red (91%)

Yellow (34%)

Blue (47%)

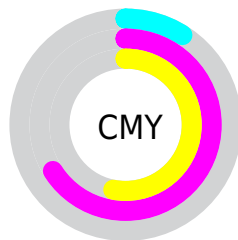


Cyan (0%)

Magenta (63%)

Yellow (48%)

Black (9%)



Cyan (9%)

Magenta (66%)

Yellow (53%)

# Brightness & Saturation Gradients

These gradients show how the Decimal color 15292025 changes by changing the brightness by 10 percent. The first figure shows a shift by +10% for each color and the second figure -10%.

Similar to the brightness gradients but the following saturation gradients show a change of the Decimal color 15292025 by changing the saturation by 10% instead.



 15292025

 15292025

16777215

 13252960

 16748205

 11277385

 16755656

 9306163

 16763108

 7405598

 16770559

 5505028

 3670018

 851968

 0

 15292025

 15292025

 15286119

 15297931

 15279957

 15304093

 15274052

 15309998

 15269943

 15315904

 15322066

 15327972

 15333877

 15335423

# Harmonies

## Analogous

The Analogous color harmony consists of three colors that are next to each other on the color wheel.



14114222



15292025



14640455

# Triad

The Triadic color harmony groups three colors that are evenly spaced from another and form a triangle on the color wheel.



15292025



5806643



39406

# Complementary

The Complementary color scheme is a pair of colors which are on the opposite of each other on the color wheel.



15292025



5695942

# Split Complementary

Split-complementary colors differ from the complementary color scheme. The scheme consists of three colors, the original color and two neighbors of the complement color.



41422



15292025



41317

# Square

The Square scheme is like the rectangle color scheme, but the four colors are evenly spaced on the color wheel.



15292025



9669901



41884



3771122

# Rectangle

The Rectangle color scheme consists of four colors that form a rectangle on the color wheel.



15292025



13398827



41884



40166



# Sweetspot

The Sweet Spot groups the original color and five complimentary colors.



15292025



16764890



12867305



8413801



0



8421504



# Same Dimension

The Same Dimension uses a secret algorithm to generate beautiful new colors.



15292025



16727403



15301462



7694956



11862059



3538957



# Inverse Universe

The Inverse Universe completely reimagines the original color for something new.



15292025



16727403



5686505



7694956



11862059



3538957



# Previews

## White Background



This preview shows how the Decimal color 15292025 looks on a white background.

## Color Contrast Check

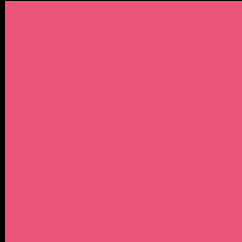
Large Text (above 18pt) WCAG AA ✓ Pass

Any Text WCAG AA × Fail

Large Text (above 18pt) WCAG AAA × Fail

Any Text WCAG AAA × Fail

# Black Background



This preview shows how the Decimal color 15292025 looks on a black background.

## Color Contrast Check

Large Text (above 18pt) WCAG AA ✓ Pass

Any Text WCAG AA ✓ Pass

Large Text (above 18pt) WCAG AAA ✓ Pass

Any Text WCAG AAA × Fail

If you want to check with other color combinations, try the [Color Contrast Checker](#).



## Decimal 15292025 Background



This preview shows how black text looks on a background with the Decimal color 15292025.



This preview shows how white text looks on a background with the Decimal color 15292025.

# Color Blindness Simulation

Color vision deficiency is a very complex topic, and I could not describe the different causes any better than Wikipedia does, so if you want to learn more, you should check out their [article about color blindness](#).


## Dichromacy



**Original Color**  
15292025

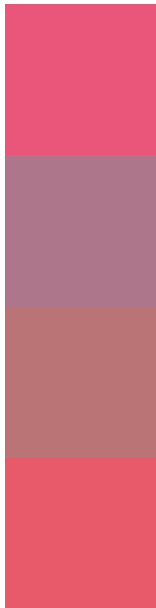
**Protanopia**  
9079189

**Deuteranopia**  
10519922



**Tritanopia**  
15162208

# Trichromacy



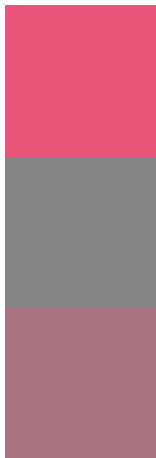
**Original Color**  
15292025

**Protanomaly**  
11368075

**Deuteranomaly**  
12285045

**Tritanomaly**  
15227241

# Monochromacy



**Original Color**  
15292025

**Achromatopsia**  
8816262

**Achromatomaly**  
11171201

# CSS Examples

## Text

The CSS property to change the color of the text to Decimal 15292025 is called "color". The color property can be set on classes, ids or directly on the HTML element.

This example shows how text in the color #E95679 looks like.

```
.text, #text, p{  
    color:#E95679  
}
```

If you want to add a text shadow in that color use the text-shadow property, you can generate a text shadow directly with our [CSS Text Shadow Generator](#).

Here you see how black text with a 4 pixel #E95679 colored shadow looks like.

```
.shadow{ text-shadow: 4px 4px 2px #E95679
}
```

## Border

The CSS property to change the border of an element to Decimal 15292025 is called "border". The border property can be set on classes, ids or directly on the HTML element.

This example shows the color as border, it can be applied via the CSS property "border" or "border-color".

```
.border, #border, table{ border:4px solid
#E95679 }
```

If only the border color should be changed use the property `border-color`.

```
.border{ border-color:#E95679 }
```

If you want to add a box shadow in that color use:

Here you see how a box with a 4 pixel #E95679 colored shadow looks like.

```
.boxshadow{ -moz-box-shadow:4px 4px 4px  
4px #E95679; -webkit-box-shadow:4px 4px  
4px 4px #E95679; box-shadow:4px 4px 4px  
4px #E95679 }
```

# Background

The CSS property to change the background color of an element to Decimal 15292025 is called "background". The background property can be set on classes, ids or directly on the HTML element.

```
.background, #background, body{  
background:#E95679 }
```

If only the background color should be changed can be used:

```
.background{ background-color:#E95679 }
```

This example shows the color as background, it is applied via the CSS property "background".

To optimize and compress your CSS code, you can use our [online CSS compressor and optimizer](#) based on csstidy. If you want to create a linear or radial gradient as background or border, check our [CSS Gradient Generator](#).



Hey! You found this booklet interesting? Support Converting Colors with the new Membership Option!

The pro membership hides all ads, plus gives you double the colors in the color bucket, and more awesome pro features!

**[Learn more, Memberships starting at \\$2.50/m!](#)**

**Follow me  
on Twitter!**

@ConvertingColor