

Converting Colors

Decimal(15301767)

Have a look what the booklet for
Decimal(15301767) contains.

Decimal(15301767)	3
<i>Conversions</i>	4
<i>Details</i>	6
<i>Harmonies</i>	11
<i>Previews</i>	23
<i>Color Blindness Simulation</i>	26
<i>CSS Examples</i>	29

Color

Decimal(15301767)

Conversions

Conversions Part 1

Format	Color
Hex	E97C87
RGB	233, 124, 135
RGB Percent	91%, 49%, 53%
CMY	0.0863, 0.5137, 0.4706
CMYK	0.00, 0.47, 0.42, 0.09
HSL	354°, 71%, 70%
HSV	354°, 47%, 91%
XYZ	45.1851, 33.4882, 27.0040
YIQ	157.8450, 61.4330, 26.5290

Conversions

Conversions Part 2

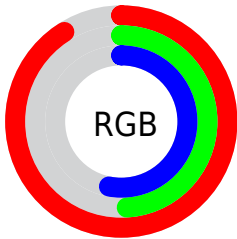
Format	Color
R _Y B	233, 124, 135
Decimal	15301767
CIE Lab	64.55, 43.01, 13.23
CIE LCh	65, 45.003, 17.096
Yxy	33.4882, 0.4276, 0.3169
Android (android.graphics.Color)	4293491847 (0xFFE97C87)
YUV	157.8450, -11.2626, 65.9109
Hunter-Lab	57.8690, 38.1051, 12.8412

Details

The Decimal color **15301767** is a light color, and the websafe version is hex **FF9999**. A complement of this color would be **8186334**, and the grayscale version is **10395294**.

A 20% lighter version of the original color is **16757692**, and **11421781** is the 20% darker color. If you saturate the color by 10%, you get **15295858**, and if you desaturate by 10%, it is **15307676**.

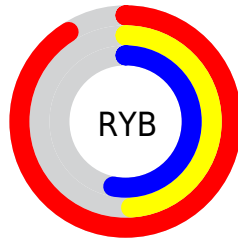
Distribution



Red (91%)

Green (49%)

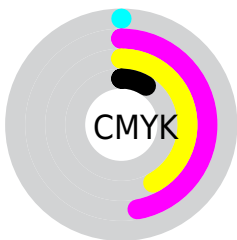
Blue (53%)



Red (91%)

Yellow (49%)

Blue (53%)

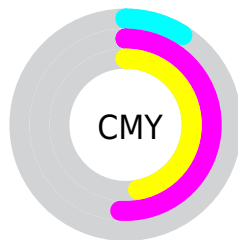


Cyan (0%)

Magenta (47%)

Yellow (42%)

Black (9%)



Cyan (9%)

Magenta (51%)

Yellow (47%)

Brightness & Saturation Gradients

These gradients show how the Decimal color 15301767 changes by changing the brightness by 10 percent. The first figure shows a shift by +10% for each color and the second figure -10%.

Similar to the brightness gradients but the following saturation gradients show a change of the Decimal color 15301767 by changing the saturation by 10% instead.

 15301767

 15301767

16777215

 13329006

 16757692

 11421781

 16764888

 9514302

 16772340

 7671849

 5832725

 4063232

 2162689

 0

 15301767

 15301767

■ 15295858

■ 15307676

■ 15289693

■ 15313841

■ 15283784

■ 15319750

■ 15277875

■ 15325659

■ 15271966

■ 15331824

■ 15269912

■ 15335423

Harmonies

Analogous

The Analogous color harmony consists of three colors that are next to each other on the color wheel.



14646704



15301767



14583395

Triad

The Triadic color harmony groups three colors that are evenly spaced from another and form a triangle on the color wheel.



15301767



7449444



2205418

Complementary

The Complementary color scheme is a pair of colors which are on the opposite of each other on the color wheel.



15301767



8186334

Split Complementary

Split-complementary colors differ from the complementary color scheme. The scheme consists of three colors, the original color and two neighbors of the complement color.



44758



15301767



3125385

Square

The Square scheme is like the rectangle color scheme, but the four colors are evenly spaced on the color wheel.



15301767



10395981



45491



8690153

Rectangle

The Rectangle color scheme consists of four colors that form a rectangle on the color wheel.



15301767



13537106



45491



43494

Sweetspot

The Sweet Spot groups the original color and five complimentary colors.



15301767



16767967



14449897



8415852



0



8421504

Same Dimension

The Same Dimension uses a secret algorithm to generate beautiful new colors.



15301767



16740479



15312508



7694955



11862034



3538949

Inverse Universe

The Inverse Universe completely reimagines the original color for something new.



15301767



16740479



8175593



7694955



11862034



3538949

Previews

White Background



This preview shows how the Decimal color 15301767 looks on a white background.

Color Contrast Check

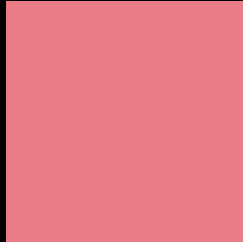
Large Text (above 18pt) WCAG AA × Fail

Any Text WCAG AA × Fail

Large Text (above 18pt) WCAG AAA × Fail

Any Text WCAG AAA × Fail

Black Background



This preview shows how the Decimal color 15301767 looks on a black background.

Color Contrast Check

Large Text (above 18pt) WCAG AA ✓ Pass

Any Text WCAG AA ✓ Pass

Large Text (above 18pt) WCAG AAA ✓ Pass

Any Text WCAG AAA ✓ Pass

If you want to check with other color combinations, try the [Color Contrast Checker](#).

Decimal 15301767 Background



This preview shows how black text looks on a background with the Decimal color 15301767.



This preview shows how white text looks on a background with the Decimal color 15301767.

Color Blindness Simulation

Color vision deficiency is a very complex topic, and I could not describe the different causes any better than Wikipedia does, so if you want to learn more, you should check out their [article about color blindness](#).

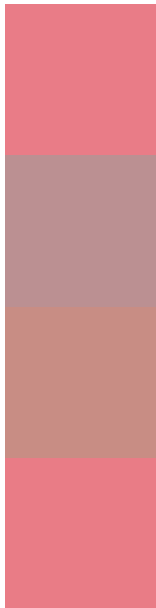
Dichromacy





Tritanopia
15301765

Trichromacy



Original Color
15301767

Protanomaly
12292242

Deuteranomaly
13143428

Tritanomaly
15301766

Monochromacy



Original Color
15301767

Achromatopsia
10395294

Achromatomaly
12161686

CSS Examples

Text

The CSS property to change the color of the text to Decimal 15301767 is called "color". The color property can be set on classes, ids or directly on the HTML element.

This example shows how text in the color #E97C87 looks like.

```
.text, #text, p{  
    color:#E97C87  
}
```

If you want to add a text shadow in that color use the text-shadow property, you can generate a text shadow directly with our [CSS Text Shadow Generator](#).

Here you see how black text with a 4 pixel #E97C87 colored shadow looks like.

```
.shadow{ text-shadow: 4px 4px 2px #E97C87
}
```

Border

The CSS property to change the border of an element to Decimal 15301767 is called "border". The border property can be set on classes, ids or directly on the HTML element.

This example shows the color as border, it can be applied via the CSS property "border" or "border-color".

```
.border, #border, table{ border:4px solid
#E97C87 }
```

If only the border color should be changed use the property `border-color`.

```
.border{ border-color:#E97C87 }
```

If you want to add a box shadow in that color use:

Here you see how a box with a 4 pixel #E97C87 colored shadow looks like.

```
.boxshadow{ -moz-box-shadow:4px 4px 4px  
4px #E97C87; -webkit-box-shadow:4px 4px  
4px 4px #E97C87; box-shadow:4px 4px 4px  
4px #E97C87 }
```

Background

The CSS property to change the background color of an element to Decimal 15301767 is called "background". The background property can be set on classes, ids or directly on the HTML element.

```
.background, #background, body{  
background:#E97C87 }
```

If only the background color should be changed can be used:

```
.background{ background-color:#E97C87 }
```

This example shows the color as background, it is applied via the CSS property "background".

To optimize and compress your CSS code, you can use our [online CSS compressor and optimizer](#) based on csstidy. If you want to create a linear or radial gradient as background or border, check our [CSS Gradient Generator](#).

Hey! You found this booklet interesting? Support Converting Colors with the new Membership Option!

The pro membership hides all ads, plus gives you double the colors in the color bucket, and more awesome pro features!

[Learn more, Memberships starting at \\$2.50/m!](#)

**Follow me
on Twitter!**

@ConvertingColor