

Converting Colors

Decimal(15305370)

Have a look what the booklet for
Decimal(15305370) contains.

Decimal(15305370)	3
<i>Conversions</i>	4
<i>Details</i>	6
<i>Harmonies</i>	11
<i>Previews</i>	23
<i>Color Blindness Simulation</i>	26
<i>CSS Examples</i>	29

Color

Decimal(15305370)

Conversions

Conversions Part 1

Format	Color
Hex	E98A9A
RGB	233, 138, 154
RGB Percent	91%, 54%, 60%
CMY	0.0863, 0.4588, 0.3961
CMYK	0.00, 0.41, 0.34, 0.09
HSL	350°, 68%, 73%
HSV	350°, 41%, 91%
XYZ	48.5255, 37.8337, 35.3169
YIQ	168.2290, 51.4840, 25.1160

Conversions

Conversions Part 2

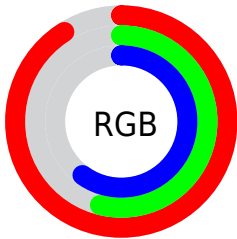
Format	Color
R _Y B	233, 138, 154
Decimal	15305370
CIE Lab	67.90, 37.99, 7.24
CIE LCh	68, 38.674, 10.783
Yxy	37.8337, 0.3988, 0.3109
Android (android.graphics.Color)	4293495450 (0xFFE98A9A)
YUV	168.2290, -7.0149, 56.8042
Hunter-Lab	61.5091, 33.1805, 9.0136

Details

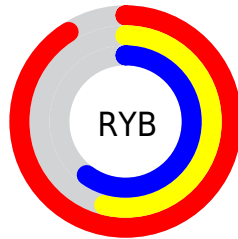
The Decimal color **15305370** is a light color, and the websafe version is hex **FF9999**. A complement of this color would be **9103833**, and the grayscale version is **11053224**.

A 20% lighter version of the original color is **16761296**, and **11490919** is the 20% darker color. If you saturate the color by 10%, you get **15299463**, and if you desaturate by 10%, it is **15311277**.

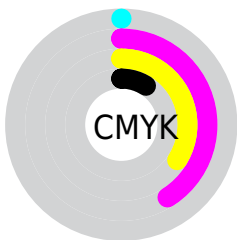
Distribution



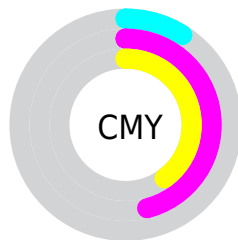
- Red (91%)
- Green (54%)
- Blue (60%)



- Red (91%)
- Yellow (54%)
- Blue (60%)



- Cyan (0%)
- Magenta (41%)
- Yellow (34%)
- Black (9%)



- Cyan (9%)
- Magenta (46%)
- Yellow (40%)

Brightness & Saturation Gradients

These gradients show how the Decimal color 15305370 changes by changing the brightness by 10 percent. The first figure shows a shift by +10% for each color and the second figure -10%.

Similar to the brightness gradients but the following saturation gradients show a change of the Decimal color 15305370 by changing the saturation by 10% instead.

 15305370

 15305370

16777215

 13398144

 16761296

 11490919

 16768493

 9649487

 16775935

 7807800

 6030627

 4259853

 2752513

 0

 15305370

 15305370

 15299463

 15311277

 15293299

 15317441

 15287392

 15323348

 15281484

 15329256

 15275321

 15335163

 15269927

 15335423

Harmonies

Analogous

The Analogous color harmony consists of three colors that are next to each other on the color wheel.



14388669



15305370



14979194

Triad

The Triadic color harmony groups three colors that are evenly spaced from another and form a triangle on the color wheel.



15305370



9023855



4632551

Complementary

The Complementary color scheme is a pair of colors which are on the opposite of each other on the color wheel.



15305370



9103833

Split Complementary

Split-complementary colors differ from the complementary color scheme. The scheme consists of three colors, the original color and two neighbors of the complement color.



46802



15305370



6141581

Square

The Square scheme is like the rectangle color scheme, but the four colors are evenly spaced on the color wheel.



15305370



11577184



2275505



8889834

Rectangle

The Rectangle color scheme consists of four colors that form a rectangle on the color wheel.



15305370



14194537



2275505



2929378

Sweetspot

The Sweet Spot groups the original color and five complimentary colors.



15305370



16769254



14191337



8416881



0



8421504

Same Dimension

The Same Dimension uses a secret algorithm to generate beautiful new colors.



15305370



16745111



15313034



7694956



11862046



3538953

Inverse Universe

The Inverse Universe completely reimagines the original color for something new.



15305370



16745111



9096169



7694956



11862046



3538953

Previews

White Background



This preview shows how the Decimal color 15305370 looks on a white background.

Color Contrast Check

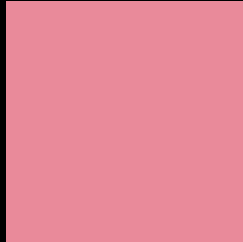
Large Text (above 18pt) WCAG AA × Fail

Any Text WCAG AA × Fail

Large Text (above 18pt) WCAG AAA × Fail

Any Text WCAG AAA × Fail

Black Background



This preview shows how the Decimal color 15305370 looks on a black background.

Color Contrast Check

Large Text (above 18pt) WCAG AA ✓ Pass

Any Text WCAG AA ✓ Pass

Large Text (above 18pt) WCAG AAA ✓ Pass

Any Text WCAG AAA ✓ Pass

If you want to check with other color combinations, try the [Color Contrast Checker](#).

Decimal 15305370 Background



This preview shows how black text looks on a background with the Decimal color 15305370.

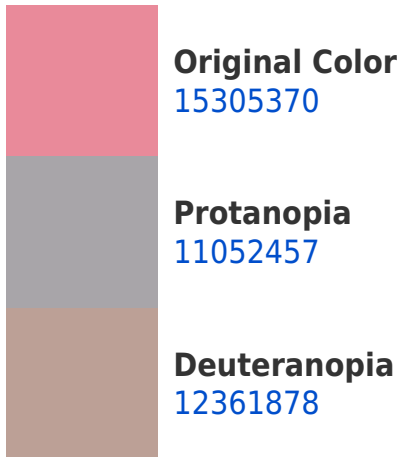



This preview shows how white text looks on a background with the Decimal color 15305370.

Color Blindness Simulation

Color vision deficiency is a very complex topic, and I could not describe the different causes any better than Wikipedia does, so if you want to learn more, you should check out their [article about color blindness](#).

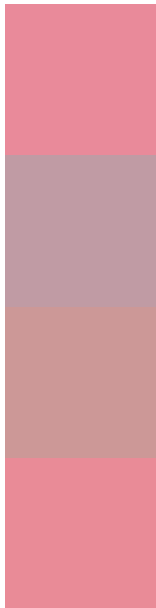
Dichromacy





Tritanopia
15305621

Trichromacy



Original Color
15305370

Protanomaly
12622756

Deuteranomaly
13408407

Tritanomaly
15305623

Monochromacy



Original Color
15305370

Achromatopsia
11053224

Achromatomaly
12623267

CSS Examples

Text

The CSS property to change the color of the text to Decimal 15305370 is called "color". The color property can be set on classes, ids or directly on the HTML element.

This example shows how text in the color #E98A9A looks like.

```
.text, #text, p{  
    color:#E98A9A  
}
```

If you want to add a text shadow in that color use the text-shadow property, you can generate a text shadow directly with our [CSS Text Shadow Generator](#).

Here you see how black text with a 4 pixel #E98A9A colored shadow looks like.

```
.shadow{ text-shadow: 4px 4px 2px #E98A9A
}
```

Border

The CSS property to change the border of an element to Decimal 15305370 is called "border". The border property can be set on classes, ids or directly on the HTML element.

This example shows the color as border, it can be applied via the CSS property "border" or "border-color".

```
.border, #border, table{ border:4px solid
#E98A9A }
```

If only the border color should be changed use the property `border-color`.

```
.border{ border-color:#E98A9A }
```

If you want to add a box shadow in that color use:

Here you see how a box with a 4 pixel #E98A9A colored shadow looks like.

```
.boxshadow{ -moz-box-shadow:4px 4px 4px  
4px #E98A9A; -webkit-box-shadow:4px 4px  
4px 4px #E98A9A; box-shadow:4px 4px 4px  
4px #E98A9A }
```

Background

The CSS property to change the background color of an element to Decimal 15305370 is called "background". The background property can be set on classes, ids or directly on the HTML element.

```
.background, #background, body{  
background:#E98A9A }
```

If only the background color should be changed can be used:

```
.background{ background-color:#E98A9A }
```

This example shows the color as background, it is applied via the CSS property "background".

To optimize and compress your CSS code, you can use our [online CSS compressor and optimizer](#) based on csstidy. If you want to create a linear or radial gradient as background or border, check our [CSS Gradient Generator](#).

Hey! You found this booklet interesting? Support Converting Colors with the new Membership Option!

The pro membership hides all ads, plus gives you double the colors in the color bucket, and more awesome pro features!

[Learn more, Memberships starting at \\$2.50/m!](#)

**Follow me
on Twitter!**

@ConvertingColor