

Converting Colors

Decimal(15305899)

Have a look what the booklet for
Decimal(15305899) contains.

Decimal(15305899)	3
<i>Conversions</i>	4
<i>Details</i>	6
<i>Harmonies</i>	11
<i>Previews</i>	23
<i>Color Blindness Simulation</i>	26
<i>CSS Examples</i>	29

Color

Decimal(15305899)

Conversions

Conversions Part 1

Format	Color
Hex	E98CAB
RGB	233, 140, 171
RGB Percent	91%, 55%, 67%
CMY	0.0863, 0.4510, 0.3294
CMYK	0.00, 0.40, 0.27, 0.09
HSL	340°, 68%, 73%
HSV	340°, 40%, 91%
XYZ	50.3330, 39.0201, 43.4069
YIQ	171.3410, 45.4770, 29.3570

Conversions

Conversions Part 2

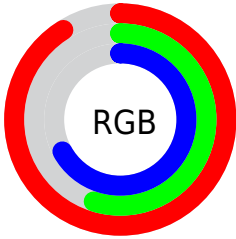
Format	Color
R _Y B	233, 140, 171
Decimal	15305899
CIE Lab	68.77, 39.15, -1.05
CIE LCh	69, 39.166, 358.467
Yxy	39.0201, 0.3791, 0.2939
Android (android.graphics.Color)	4293495979 (0xFFE98CAB)
YUV	171.3410, -0.1681, 54.0749
Hunter-Lab	62.4661, 34.5137, 2.5264

Details

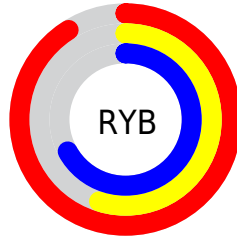
The Decimal color **15305899** is a light color, and the websafe version is hex **FF99CC**. A complement of this color would be **9234890**, and the grayscale version is **11250603**.

A 20% lighter version of the original color is **16761826**, and **11491447** is the 20% darker color. If you saturate the color by 10%, you get **15299995**, and if you desaturate by 10%, it is **15311803**.

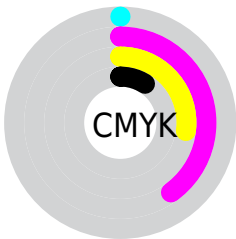
Distribution



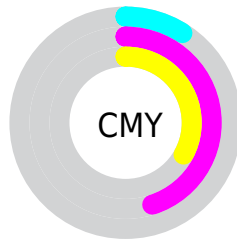
- Red (91%)
- Green (55%)
- Blue (67%)



- Red (91%)
- Yellow (55%)
- Blue (67%)



- Cyan (0%)
- Magenta (40%)
- Yellow (27%)
- Black (9%)

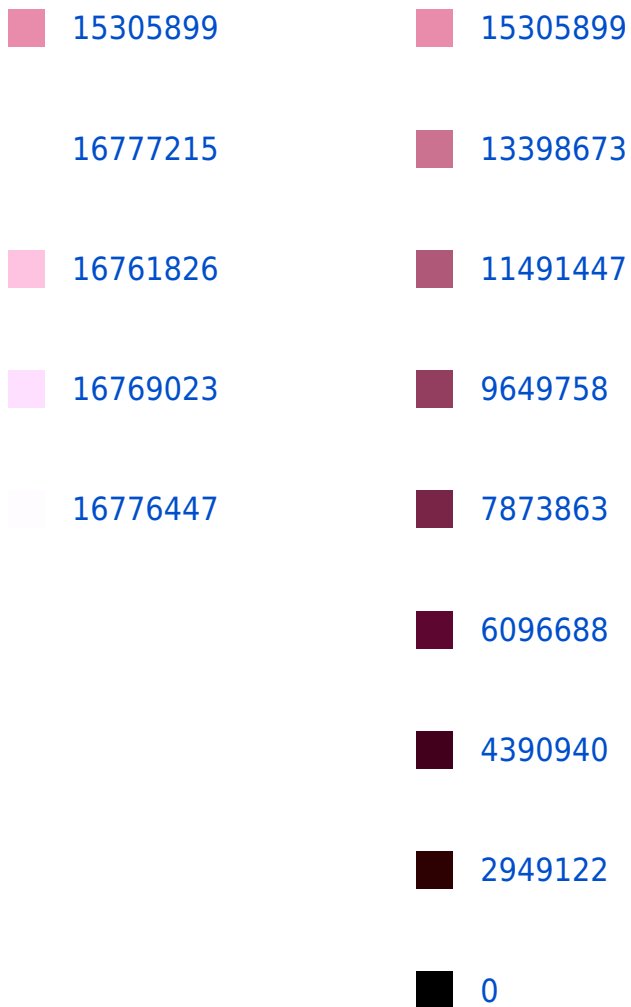


- Cyan (9%)
- Magenta (45%)
- Yellow (33%)

Brightness & Saturation Gradients

These gradients show how the Decimal color 15305899 changes by changing the brightness by 10 percent. The first figure shows a shift by +10% for each color and the second figure -10%.

Similar to the brightness gradients but the following saturation gradients show a change of the Decimal color 15305899 by changing the saturation by 10% instead.



■ 15299995

■ 15311803

■ 15293836

■ 15317962

■ 15287932

■ 15323866

■ 15282029

■ 15329769

■ 15276125

■ 15335417

■ 15269966

■ 15335423

Harmonies

Analogous

The Analogous color harmony consists of three colors that are next to each other on the color wheel.



13865933



15305899



15437704

Triad

The Triadic color harmony groups three colors that are evenly spaced from another and form a triangle on the color wheel.



15305899



10268776



2471395

Complementary

The Complementary color scheme is a pair of colors which are on the opposite of each other on the color wheel.



15305899



9234890

Split Complementary

Split-complementary colors differ from the complementary color scheme. The scheme consists of three colors, the original color and two neighbors of the complement color.



47816



15305899



7518082

Square

The Square scheme is like the rectangle color scheme, but the four colors are evenly spaced on the color wheel.



15305899



12625248



4111013



7318766

Rectangle

The Rectangle color scheme consists of four colors that form a rectangle on the color wheel.



15305899



14914932



4111013



47068

Sweetspot

The Sweet Spot groups the original color and five complimentary colors.



15305899



16769259



13274345



8416884



0



8421504

Same Dimension

The Same Dimension uses a secret algorithm to generate beautiful new colors.



15305899



16745901



15309964



7694957



11862076



3538962

Inverse Universe

The Inverse Universe completely reimagines the original color for something new.



15305899



16745901



9230825



7694957



11862076



3538962

Previews

White Background



This preview shows how the Decimal color 15305899 looks on a white background.

Color Contrast Check

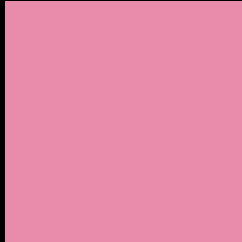
Large Text (above 18pt) WCAG AA × Fail

Any Text WCAG AA × Fail

Large Text (above 18pt) WCAG AAA × Fail

Any Text WCAG AAA × Fail

Black Background



This preview shows how the Decimal color 15305899 looks on a black background.

Color Contrast Check

Large Text (above 18pt) WCAG AA ✓ Pass

Any Text WCAG AA ✓ Pass

Large Text (above 18pt) WCAG AAA ✓ Pass

Any Text WCAG AAA ✓ Pass

If you want to check with other color combinations, try the [Color Contrast Checker](#).

Decimal 15305899 Background



This preview shows how black text looks on a background with the Decimal color 15305899.

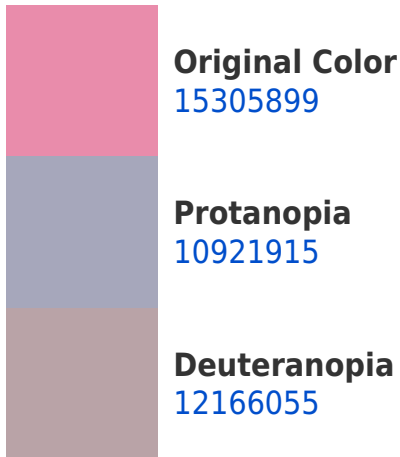


This preview shows how white text looks on a background with the Decimal color 15305899.

Color Blindness Simulation

Color vision deficiency is a very complex topic, and I could not describe the different causes any better than Wikipedia does, so if you want to learn more, you should check out their [article about color blindness](#).

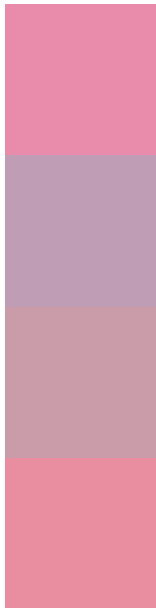
Dichromacy





Tritanopia
15175578

Trichromacy



Original Color
15305899

Protanomaly
12492213

Deuteranomaly
13278120

Tritanomaly
15240864

Monochromacy



Original Color
15305899

Achromatopsia
11250603

Achromatomaly
12755115

CSS Examples

Text

The CSS property to change the color of the text to Decimal 15305899 is called "color". The color property can be set on classes, ids or directly on the HTML element.

This example shows how text in the color #E98CAB looks like.

```
.text, #text, p{  
    color:#E98CAB  
}
```

If you want to add a text shadow in that color use the text-shadow property, you can generate a text shadow directly with our [CSS Text Shadow Generator](#).

Here you see how black text with a 4 pixel #E98CAB colored shadow looks like.

```
.shadow{ text-shadow: 4px 4px 2px #E98CAB
}
```

Border

The CSS property to change the border of an element to Decimal 15305899 is called "border". The border property can be set on classes, ids or directly on the HTML element.

This example shows the color as border, it can be applied via the CSS property "border" or "border-color".

```
.border, #border, table{ border:4px solid
#E98CAB }
```

If only the border color should be changed use the property `border-color`.

```
.border{ border-color:#E98CAB }
```

If you want to add a box shadow in that color use:

Here you see how a box with a 4 pixel #E98CAB colored shadow looks like.

```
.boxshadow{ -moz-box-shadow:4px 4px 4px  
4px #E98CAB; -webkit-box-shadow:4px 4px  
4px 4px #E98CAB; box-shadow:4px 4px 4px  
4px #E98CAB }
```

Background

The CSS property to change the background color of an element to Decimal 15305899 is called "background". The background property can be set on classes, ids or directly on the HTML element.

```
.background, #background, body{  
background:#E98CAB }
```

If only the background color should be changed can be used:

```
.background{ background-color:#E98CAB }
```

This example shows the color as background, it is applied via the CSS property "background".

To optimize and compress your CSS code, you can use our [online CSS compressor and optimizer](#) based on csstidy. If you want to create a linear or radial gradient as background or border, check our [CSS Gradient Generator](#).

Hey! You found this booklet interesting? Support Converting Colors with the new Membership Option!

The pro membership hides all ads, plus gives you double the colors in the color bucket, and more awesome pro features!

[Learn more, Memberships starting at \\$2.50/m!](#)

**Follow me
on Twitter!**

@ConvertingColor