

# Converting Colors

Decimal(15312571)

Have a look what the booklet for  
Decimal(15312571) contains.

<b>Decimal(15312571)</b> .....	3
<i><b>Conversions</b></i> .....	4
<i><b>Details</b></i> .....	6
<i><b>Harmonies</b></i> .....	11
<i><b>Previews</b></i> .....	23
<i><b>Color Blindness Simulation</b></i> .....	26
<i><b>CSS Examples</b></i> .....	29

# **Color**

**Decimal(15312571)**

# Conversions

## Conversions Part 1

Format	Color
Hex	E9A6BB
RGB	233, 166, 187
RGB Percent	91%, 65%, 73%
CMY	0.0863, 0.3490, 0.2667
CMYK	0.00, 0.29, 0.20, 0.09
HSL	341°, 60%, 78%
HSV	341°, 29%, 91%
XYZ	56.2101, 48.1839, 53.3515
YIQ	188.4270, 33.1910, 20.7350

# Conversions

## Conversions Part 2

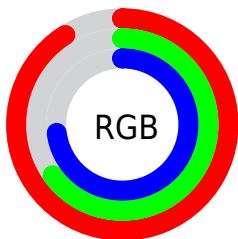
Format	Color
R <sub>Y</sub> B	233, 166, 187
Decimal	15312571
CIE Lab	74.94, 27.70, -0.88
CIE LCh	75, 27.718, 358.182
Yxy	48.1839, 0.3563, 0.3055
Android (android.graphics.Color)	4293502651 (0xFFE9A6BB)
YUV	188.4270, -0.7035, 39.0905
Hunter-Lab	69.4146, 23.0689, 3.0204

# Details

The Decimal color **15312571** is a light color, and the websafe version is hex **CC9999**. A complement of this color would be **10938836**, and the grayscale version is **12369084**.

A 20% lighter version of the original color is **16768755**, and **11563398** is the 20% darker color. If you saturate the color by 10%, you get **15306667**, and if you desaturate by 10%, it is **15318475**.

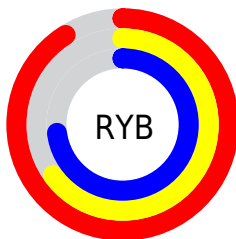
# Distribution



Red (91%)

Green (65%)

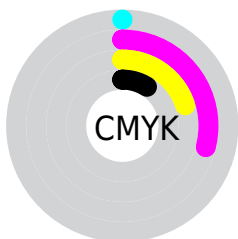
Blue (73%)



Red (91%)

Yellow (65%)

Blue (73%)

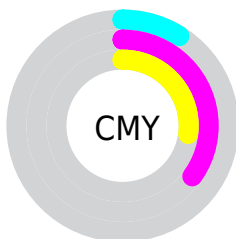


Cyan (0%)

Magenta (29%)

Yellow (20%)

Black (9%)



Cyan (9%)

Magenta (35%)

Yellow (27%)

# Brightness & Saturation Gradients

These gradients show how the Decimal color 15312571 changes by changing the brightness by 10 percent. The first figure shows a shift by +10% for each color and the second figure -10%.

Similar to the brightness gradients but the following saturation gradients show a change of the Decimal color 15312571 by changing the saturation by 10% instead.



 15312571

 15312571

16777215


 13405088

 16768755

 11563398


 16775935

 9787501

 8011860

 6302013

 4657448

 3080211

 983040

 0

 15312571

 15312571

 15306667

 15318475

 15300507

 15324635

 15294603

 15330539

 15288699

 15335419

 15282795

 15335423

 15276635

 15270731

 15269961

# Harmonies

## Analogous

The Analogous color harmony consists of three colors that are next to each other on the color wheel.



14199508



15312571



15509410

# Triad

The Triadic color harmony groups three colors that are evenly spaced from another and form a triangle on the color wheel.



15312571



11648651



7848675

# Complementary

The Complementary color scheme is a pair of colors which are on the opposite of each other on the color wheel.



15312571



10938836

# Split Complementary

Split-complementary colors differ from the complementary color scheme. The scheme consists of three colors, the original color and two neighbors of the complement color.



7128784



15312571



9749661

# Square

The Square scheme is like the rectangle color scheme, but the four colors are evenly spaced on the color wheel.



15312571



13481606



8046518



9944043

# Rectangle

The Rectangle color scheme consists of four colors that form a rectangle on the color wheel.



15312571



15117204



8046518



7455966



# Sweetspot

The Sweet Spot groups the original color and five complimentary colors.



15312571



16771311



13936361



8417654



0



8421504



# Same Dimension

The Same Dimension uses a secret algorithm to generate beautiful new colors.



15312571



16754370



15315622



7694957



11862073



3538961



# Inverse Universe

The Inverse Universe completely reimagines the original color for something new.



15312571



16754370



10935785



7694957



11862073



3538961



# Previews

## White Background



This preview shows how the Decimal color 15312571 looks on a white background.

## Color Contrast Check

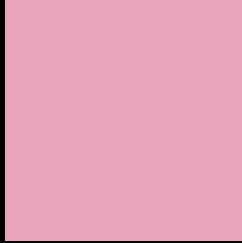
Large Text (above 18pt) WCAG AA × Fail

Any Text WCAG AA × Fail

Large Text (above 18pt) WCAG AAA × Fail

Any Text WCAG AAA × Fail

# Black Background



This preview shows how the Decimal color 15312571 looks on a black background.

## Color Contrast Check

Large Text (above 18pt) WCAG AA ✓ Pass

Any Text WCAG AA ✓ Pass

Large Text (above 18pt) WCAG AAA ✓ Pass

Any Text WCAG AAA ✓ Pass

If you want to check with other color combinations, try the [Color Contrast Checker](#).



## Decimal 15312571 Background



This preview shows how black text looks on a background with the Decimal color 15312571.



This preview shows how white text looks on a background with the Decimal color 15312571.

# Color Blindness Simulation

Color vision deficiency is a very complex topic, and I could not describe the different causes any better than Wikipedia does, so if you want to learn more, you should check out their [article about color blindness](#).

## Dichromacy



**Original Color**  
15312571

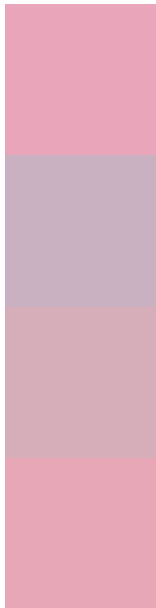
**Protanopia**  
12105926

**Deuteranopia**  
13349817



**Tritanopia**  
15247284

# Trichromacy



**Original Color**  
15312571

**Protanomaly**  
13283778

**Deuteranomaly**  
14069434

**Tritanomaly**  
15247287

# Monochromacy



**Original Color**  
15312571

**Achromatopsia**  
12369084

**Achromatomaly**  
13415612

# CSS Examples

## Text

The CSS property to change the color of the text to Decimal 15312571 is called "color". The color property can be set on classes, ids or directly on the HTML element.

This example shows how text in the color #E9A6BB looks like.

```
.text, #text, p{  
    color:#E9A6BB  
}
```

If you want to add a text shadow in that color use the text-shadow property, you can generate a text shadow directly with our [CSS Text Shadow Generator](#).

Here you see how black text with a 4 pixel #E9A6BB colored shadow looks like.

```
.shadow{ text-shadow: 4px 4px 2px #E9A6BB  
}
```

## Border

The CSS property to change the border of an element to Decimal 15312571 is called "border". The border property can be set on classes, ids or directly on the HTML element.

This example shows the color as border, it can be applied via the CSS property "border" or "border-color".

```
.border, #border, table{ border:4px solid  
#E9A6BB }
```

If only the border color should be changed use the property `border-color`.

```
.border{ border-color:#E9A6BB }
```

If you want to add a box shadow in that color use:

Here you see how a box with a 4 pixel #E9A6BB colored shadow looks like.

```
.boxshadow{ -moz-box-shadow:4px 4px 4px  
4px #E9A6BB; -webkit-box-shadow:4px 4px  
4px 4px #E9A6BB; box-shadow:4px 4px 4px  
4px #E9A6BB }
```

# Background

The CSS property to change the background color of an element to Decimal 15312571 is called "background". The background property can be set on classes, ids or directly on the HTML element.

```
.background, #background, body{  
background:#E9A6BB }
```

If only the background color should be changed can be used:

```
.background{ background-color:#E9A6BB }
```

This example shows the color as background, it is applied via the CSS property "background".

To optimize and compress your CSS code, you can use our [online CSS compressor and optimizer](#) based on csstidy. If you want to create a linear or radial gradient as background or border, check our [CSS Gradient Generator](#).



Hey! You found this booklet interesting? Support Converting Colors with the new Membership Option!

The pro membership hides all ads, plus gives you double the colors in the color bucket, and more awesome pro features!

**[Learn more, Memberships starting at \\$2.50/m!](#)**

**Follow me  
on Twitter!**

@ConvertingColor