

Converting Colors

Decimal(15314619)

Have a look what the booklet for
Decimal(15314619) contains.

Decimal(15314619)	3
<i>Conversions</i>	4
<i>Details</i>	6
<i>Harmonies</i>	11
<i>Previews</i>	23
<i>Color Blindness Simulation</i>	26
<i>CSS Examples</i>	29

Color

Decimal(15314619)

Conversions

Conversions Part 1

Format	Color
Hex	E9AEBB
RGB	233, 174, 187
RGB Percent	91%, 68%, 73%
CMY	0.0863, 0.3176, 0.2667
CMYK	0.00, 0.25, 0.20, 0.09
HSL	347°, 57%, 80%
HSV	347°, 25%, 91%
XYZ	57.7100, 51.1836, 53.8515
YIQ	193.1230, 30.9910, 16.5510

Conversions

Conversions Part 2

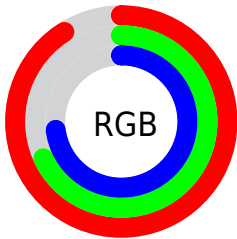
Format	Color
R _Y B	233, 174, 187
Decimal	15314619
CIE Lab	76.79, 23.43, 1.82
CIE LCh	77, 23.503, 4.437
Yxy	51.1836, 0.3546, 0.3145
Android (android.graphics.Color)	4293504699 (0xFFE9AE ^B B)
YUV	193.1230, -3.0186, 34.9721
Hunter-Lab	71.5427, 18.7874, 5.4513

Details

The Decimal color **15314619** is a light color, and the websafe version is hex **CC9999**. A complement of this color would be **11463132**, and the grayscale version is **12698049**.

A 20% lighter version of the original color is **16770803**, and **11565446** is the 20% darker color. If you saturate the color by 10%, you get **15308713**, and if you desaturate by 10%, it is **15320525**.

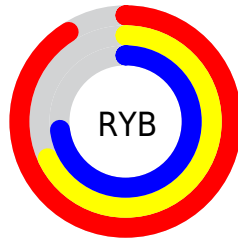
Distribution



Red (91%)

Green (68%)

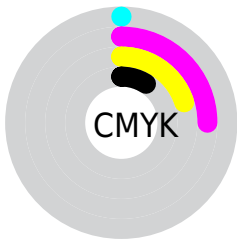
Blue (73%)



Red (91%)

Yellow (68%)

Blue (73%)

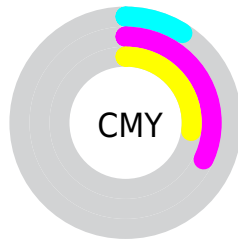


Cyan (0%)

Magenta (25%)

Yellow (20%)

Black (9%)



Cyan (9%)

Magenta (32%)

Yellow (27%)

Brightness & Saturation Gradients

These gradients show how the Decimal color 15314619 changes by changing the brightness by 10 percent. The first figure shows a shift by +10% for each color and the second figure -10%.

Similar to the brightness gradients but the following saturation gradients show a change of the Decimal color 15314619 by changing the saturation by 10% instead.



 15314619

 15314619

 15308713

 15320525

 15302551

 15326687

 15296645

 15332593

 15290738

 15335423

 15284832

 15278670

 15272764

 15269939

Harmonies

Analogous

The Analogous color harmony consists of three colors that are next to each other on the color wheel.



14528977



15314619



15315110

Triad

The Triadic color harmony groups three colors that are evenly spaced from another and form a triangle on the color wheel.



15314619



11781273



9356772

Complementary

The Complementary color scheme is a pair of colors which are on the opposite of each other on the color wheel.



15314619



11463132

Split Complementary

Split-complementary colors differ from the complementary color scheme. The scheme consists of three colors, the original color and two neighbors of the complement color.



8505813



15314619



10143914

Square

The Square scheme is like the rectangle color scheme, but the four colors are evenly spaced on the color wheel.



15314619



13352338



8899264



11058920

Rectangle

The Rectangle color scheme consists of four colors that form a rectangle on the color wheel.



15314619



14922907



8899264



8898272

Sweetspot

The Sweet Spot groups the original color and five complimentary colors.



15314619



16772079



14397161



8418166



0



8421504

Same Dimension

The Same Dimension uses a secret algorithm to generate beautiful new colors.



15314619



16757699



15318702



7694956



11862056



3538956

Inverse Universe

The Inverse Universe completely reimagines the original color for something new.



15314619



16757699



11459049



7694956



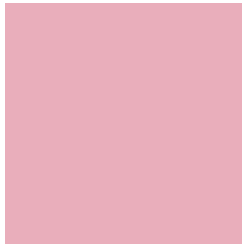
11862056



3538956

Previews

White Background



This preview shows how the Decimal color 15314619 looks on a white background.

Color Contrast Check

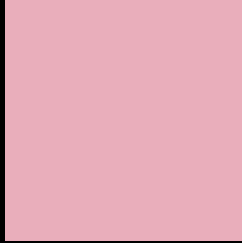
Large Text (above 18pt) WCAG AA × Fail

Any Text WCAG AA × Fail

Large Text (above 18pt) WCAG AAA × Fail

Any Text WCAG AAA × Fail

Black Background



This preview shows how the Decimal color 15314619 looks on a black background.

Color Contrast Check

Large Text (above 18pt) WCAG AA ✓ Pass

Any Text WCAG AA ✓ Pass

Large Text (above 18pt) WCAG AAA ✓ Pass

Any Text WCAG AAA ✓ Pass

If you want to check with other color combinations, try the [Color Contrast Checker](#).

Decimal 15314619 Background



This preview shows how black text looks on a background with the Decimal color 15314619.




This preview shows how white text looks on a background with the Decimal color 15314619.

Color Blindness Simulation

Color vision deficiency is a very complex topic, and I could not describe the different causes any better than Wikipedia does, so if you want to learn more, you should check out their [article about color blindness](#).

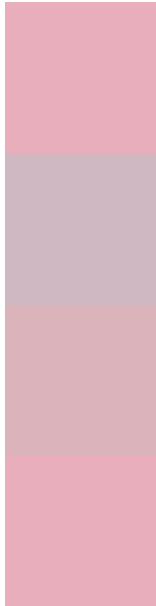
Dichromacy





Tritanopia
15314619

Trichromacy



Original Color
15314619

Protanomaly
13613249

Deuteranomaly
14333114

Tritanomaly
15314619

Monochromacy



Original Color
15314619

Achromatopsia
12698049

Achromatomaly
13679295

CSS Examples

Text

The CSS property to change the color of the text to Decimal 15314619 is called "color". The color property can be set on classes, ids or directly on the HTML element.

This example shows how text in the color #E9AEBB looks like.

```
.text, #text, p{  
    color:#E9AEBB  
}
```

If you want to add a text shadow in that color use the text-shadow property, you can generate a text shadow directly with our [CSS Text Shadow Generator](#).

Here you see how black text with a 4 pixel #E9AEBB colored shadow looks like.

```
.shadow{ text-shadow: 4px 4px 2px #E9AEBB
}
```

Border

The CSS property to change the border of an element to Decimal 15314619 is called "border". The border property can be set on classes, ids or directly on the HTML element.

This example shows the color as border, it can be applied via the CSS property "border" or "border-color".

```
.border, #border, table{ border:4px solid
#E9AEBB }
```

If only the border color should be changed use the property `border-color`.

```
.border{ border-color:#E9AE BB }
```

If you want to add a box shadow in that color use:

Here you see how a box with a 4 pixel #E9AE BB colored shadow looks like.

```
.boxshadow{ -moz-box-shadow:4px 4px 4px  
4px #E9AE BB; -webkit-box-shadow:4px 4px  
4px 4px #E9AE BB; box-shadow:4px 4px 4px  
4px #E9AE BB }
```

Background

The CSS property to change the background color of an element to Decimal 15314619 is called "background". The background property can be set on classes, ids or directly on the HTML element.

```
.background, #background, body{  
background:#E9AEBB }
```

If only the background color should be changed can be used:

```
.background{ background-color:#E9AEBB }
```

This example shows the color as background, it is applied via the CSS property "background".

To optimize and compress your CSS code, you can use our [online CSS compressor and optimizer](#) based on csstidy. If you want to create a linear or radial gradient as background or border, check our [CSS Gradient Generator](#).

Hey! You found this booklet interesting? Support Converting Colors with the new Membership Option!

The pro membership hides all ads, plus gives you double the colors in the color bucket, and more awesome pro features!

[Learn more, Memberships starting at \\$2.50/m!](#)

**Follow me
on Twitter!**

@ConvertingColor