

Converting Colors

Decimal(15317661)

Have a look what the booklet for
Decimal(15317661) contains.

Decimal(15317661)	3
<i>Conversions</i>	4
<i>Details</i>	6
<i>Harmonies</i>	11
<i>Previews</i>	23
<i>Color Blindness Simulation</i>	26
<i>CSS Examples</i>	29

Color

Decimal(15317661)

Conversions

Conversions Part 1

Format	Color
Hex	E9BA9D
RGB	233, 186, 157
RGB Percent	91%, 73%, 62%
CMY	0.0863, 0.2706, 0.3843
CMYK	0.00, 0.20, 0.33, 0.09
HSL	23°, 63%, 76%
HSV	23°, 33%, 91%
XYZ	57.2490, 54.8758, 39.4730
YIQ	196.7470, 37.3210, 0.9450

Conversions

Conversions Part 2

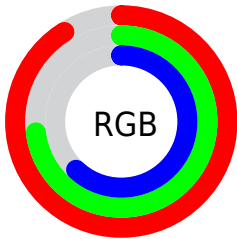
Format	Color
R _Y B	233, 204, 157
Decimal	15317661
CIE Lab	78.97, 12.91, 21.13
CIE LCh	79, 24.763, 58.584
Yxy	54.8758, 0.3776, 0.3620
Android (android.graphics.Color)	4293507741 (0xFFE9BA9D)
YUV	196.7470, -19.5953, 31.7939
Hunter-Lab	74.0782, 8.3113, 20.2617

Details

The Decimal color **15317661** is a light color, and the websafe version is hex **FFCC99**. A complement of this color would be **10341609**, and the grayscale version is **12961221**.

A 20% lighter version of the original color is **16773844**, and **11568490** is the 20% darker color. If you saturate the color by 10%, you get **15314054**, and if you desaturate by 10%, it is **15321268**.

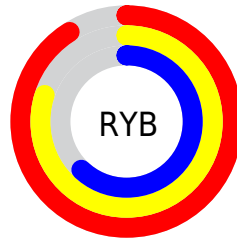
Distribution



Red (91%)

Green (73%)

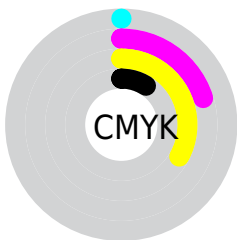
Blue (62%)



Red (91%)

Yellow (80%)

Blue (62%)

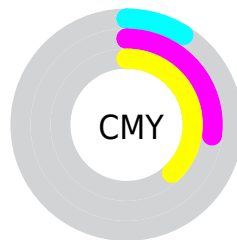


Cyan (0%)

Magenta (20%)

Yellow (33%)

Black (9%)



Cyan (9%)

Magenta (27%)

Yellow (38%)

Brightness & Saturation Gradients

These gradients show how the Decimal color 15317661 changes by changing the brightness by 10 percent. The first figure shows a shift by +10% for each color and the second figure -10%.

Similar to the brightness gradients but the following saturation gradients show a change of the Decimal color 15317661 by changing the saturation by 10% instead.

 15317661

 15317661

16777215

 13410179

 16773844

 11568490

 16777200

 9792593

 8016698

 6306852

 4597263

 3019008

 1245184

 0

 15317661

 15317661

 15314054

 15321268

 15310190

 15325132

 15306583

 15328739

 15302720

 15332602

 15299112

 15335423

 15295505

 15292672

Harmonies

Analogous

The Analogous color harmony consists of three colors that are next to each other on the color wheel.



15971503



15317661



14074518

Triad

The Triadic color harmony groups three colors that are evenly spaced from another and form a triangle on the color wheel.



15317661



9228738



13025004

Complementary

The Complementary color scheme is a pair of colors which are on the opposite of each other on the color wheel.



15317661



10341609

Split Complementary

Split-complementary colors differ from the complementary color scheme. The scheme consists of three colors, the original color and two neighbors of the complement color.



10995441



15317661



8573145

Square

The Square scheme is like the rectangle color scheme, but the four colors are evenly spaced on the color wheel.



15317661



10735275



9227498



14727132

Rectangle

The Rectangle color scheme consists of four colors that form a rectangle on the color wheel.



15317661



13027224



9227498



12370415

Sweetspot

The Sweet Spot groups the original color and five complimentary colors.



15317661



16773094



15310285



8418928



0



8421504

Same Dimension

The Same Dimension uses a secret algorithm to generate beautiful new colors.



15317661



16761244



15327133



7695978



11879680



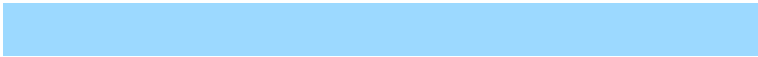
3544064

Inverse Universe

The Inverse Universe completely reimagines the original color for something new.



10341609



10279423



10332137



6975861



28853



8502

Previews

White Background



This preview shows how the Decimal color 15317661 looks on a white background.

Color Contrast Check

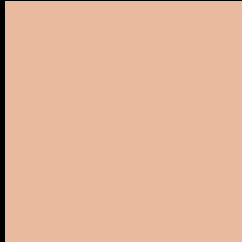
Large Text (above 18pt) WCAG AA × Fail

Any Text WCAG AA × Fail

Large Text (above 18pt) WCAG AAA × Fail

Any Text WCAG AAA × Fail

Black Background



This preview shows how the Decimal color 15317661 looks on a black background.

Color Contrast Check

Large Text (above 18pt) WCAG AA ✓ Pass

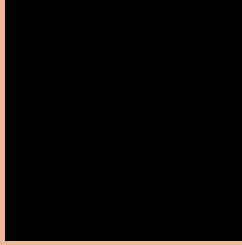
Any Text WCAG AA ✓ Pass

Large Text (above 18pt) WCAG AAA ✓ Pass

Any Text WCAG AAA ✓ Pass

If you want to check with other color combinations, try the [Color Contrast Checker](#).

Decimal 15317661 Background



This preview shows how black text looks on a background with the Decimal color 15317661.




This preview shows how white text looks on a background with the Decimal color 15317661.

Color Blindness Simulation

Color vision deficiency is a very complex topic, and I could not describe the different causes any better than Wikipedia does, so if you want to learn more, you should check out their [article about color blindness](#).

Dichromacy





Tritanopia
15578563

Trichromacy



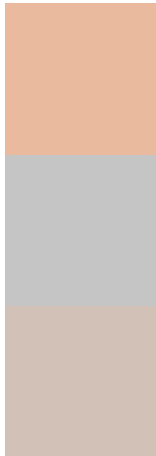
Original Color
15317661

Protanomaly
14205088

Deuteranomaly
15121309

Tritanomaly
15513525

Monochromacy



Original Color
15317661

Achromatopsia
12961221

Achromatomaly
13812150

CSS Examples

Text

The CSS property to change the color of the text to Decimal 15317661 is called "color". The color property can be set on classes, ids or directly on the HTML element.

This example shows how text in the color #E9BA9D looks like.

```
.text, #text, p{  
    color:#E9BA9D  
}
```

If you want to add a text shadow in that color use the text-shadow property, you can generate a text shadow directly with our [CSS Text Shadow Generator](#).

Here you see how black text with a 4 pixel #E9BA9D colored shadow looks like.

```
.shadow{ text-shadow: 4px 4px 2px #E9BA9D
}
```

Border

The CSS property to change the border of an element to Decimal 15317661 is called "border". The border property can be set on classes, ids or directly on the HTML element.

This example shows the color as border, it can be applied via the CSS property "border" or "border-color".

```
.border, #border, table{ border:4px solid
#E9BA9D }
```

If only the border color should be changed use the property `border-color`.

```
.border{ border-color:#E9BA9D }
```

If you want to add a box shadow in that color use:

Here you see how a box with a 4 pixel #E9BA9D colored shadow looks like.

```
.boxshadow{ -moz-box-shadow:4px 4px 4px  
4px #E9BA9D; -webkit-box-shadow:4px 4px  
4px 4px #E9BA9D; box-shadow:4px 4px 4px  
4px #E9BA9D }
```

Background

The CSS property to change the background color of an element to Decimal 15317661 is called "background". The background property can be set on classes, ids or directly on the HTML element.

```
.background, #background, body{  
background:#E9BA9D }
```

If only the background color should be changed can be used:

```
.background{ background-color:#E9BA9D }
```

This example shows the color as background, it is applied via the CSS property "background".

To optimize and compress your CSS code, you can use our [online CSS compressor and optimizer](#) based on csstidy. If you want to create a linear or radial gradient as background or border, check our [CSS Gradient Generator](#).

Hey! You found this booklet interesting? Support Converting Colors with the new Membership Option!

The pro membership hides all ads, plus gives you double the colors in the color bucket, and more awesome pro features!

[Learn more, Memberships starting at \\$2.50/m!](#)

**Follow me
on Twitter!**

@ConvertingColor