

# Converting Colors

Decimal(15318703)

Have a look what the booklet for  
Decimal(15318703) contains.

<b>Decimal(15318703)</b> .....	3
<i><b>Conversions</b></i> .....	4
<i><b>Details</b></i> .....	6
<i><b>Harmonies</b></i> .....	11
<i><b>Previews</b></i> .....	23
<i><b>Color Blindness Simulation</b></i> .....	26
<i><b>CSS Examples</b></i> .....	29

# **Color**

**Decimal(15318703)**

# Conversions

## Conversions Part 1

Format	Color
Hex	E9BEAF
RGB	233, 190, 175
RGB Percent	91%, 75%, 69%
CMY	0.0863, 0.2549, 0.3137
CMYK	0.00, 0.18, 0.25, 0.09
HSL	16°, 57%, 80%
HSV	16°, 25%, 91%
XYZ	59.7556, 57.2457, 48.4575
YIQ	201.1470, 30.4430, 4.4510

# Conversions

## Conversions Part 2

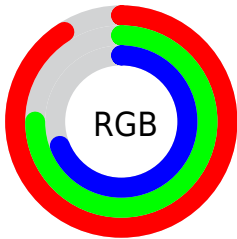
Format	Color
R <sub>Y</sub> B	233, 195, 175
Decimal	15318703
CIE Lab	80.32, 13.17, 13.37
CIE LCh	80, 18.768, 45.421
Yxy	57.2457, 0.3612, 0.3460
Android (android.graphics.Color)	4293508783 (0xFFE9BEAF)
YUV	201.1470, -12.8905, 27.9351
Hunter-Lab	75.6609, 8.5695, 14.9900

# Details

The Decimal color **15318703** is a light color, and the websafe version is hex **FFCCCC**. A complement of this color would be **11524841**, and the grayscale version is **13224393**.

A 20% lighter version of the original color is **16774887**, and **11635067** is the 20% darker color. If you saturate the color by 10%, you get **15314328**, and if you desaturate by 10%, it is **15323078**.

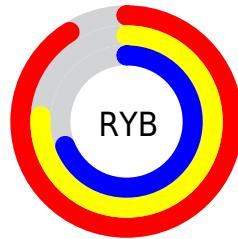
# Distribution



Red (91%)

Green (75%)

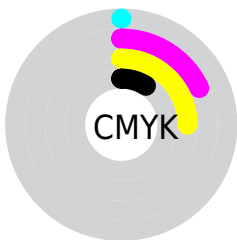
Blue (69%)



Red (91%)

Yellow (76%)

Blue (69%)

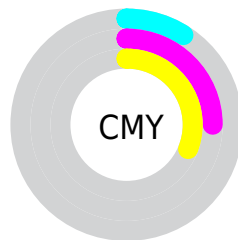


Cyan (0%)

Magenta (18%)

Yellow (25%)

Black (9%)



Cyan (9%)

Magenta (25%)

Yellow (31%)

# Brightness & Saturation Gradients

These gradients show how the Decimal color 15318703 changes by changing the brightness by 10 percent. The first figure shows a shift by +10% for each color and the second figure -10%.

Similar to the brightness gradients but the following saturation gradients show a change of the Decimal color 15318703 by changing the saturation by 10% instead.



 15318703

 15318703

16777215

 13411220

 16774887

 11635067

 9793378

 8083274

 6373171

 4729118

 3216390

 1769472

 0

 15318703

 15318703

 15314328

 15323078

 15309696

 15327710

 15305321

 15332085

 15300946

 15335423

 15296571

 15291939

 15287564

 15285248

# Harmonies

## Analogous

The Analogous color harmony consists of three colors that are next to each other on the color wheel.



15514559



15318703



14533542

# Triad

The Triadic color harmony groups three colors that are evenly spaced from another and form a triangle on the color wheel.



15318703



10867134



12568297

# Complementary

The Complementary color scheme is a pair of colors which are on the opposite of each other on the color wheel.



15318703



11524841

# Split Complementary

Split-complementary colors differ from the complementary color scheme. The scheme consists of three colors, the original color and two neighbors of the complement color.



11193321



15318703



10146256

# Square

The Square scheme is like the rectangle color scheme, but the four colors are evenly spaced on the color wheel.



15318703



12045998



10211552



14008544

# Rectangle

The Rectangle color scheme consists of four colors that form a rectangle on the color wheel.



15318703



13813668



10211552



12110058

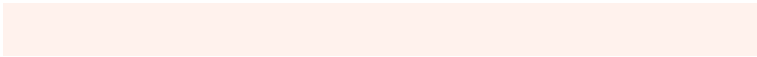


# Sweetspot

The Sweet Spot groups the original color and five complimentary colors.



15318703



16773869



15314907



8419445



0



8421504



# Same Dimension

The Same Dimension uses a secret algorithm to generate beautiful new colors.



15318703



16762547



15326127



7695722



11874048



3542528

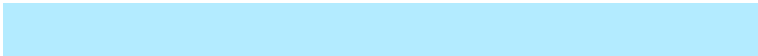


# Inverse Universe

The Inverse Universe completely reimagines the original color for something new.



11524841



11791359



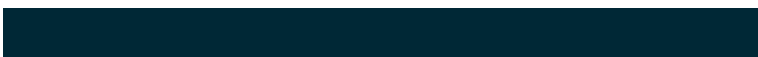
11517673



6976117



34485

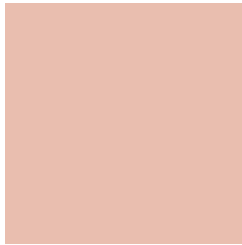


10294



# Previews

## White Background



This preview shows how the Decimal color 15318703 looks on a white background.

## Color Contrast Check

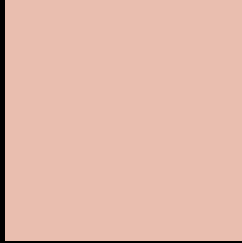
Large Text (above 18pt) WCAG AA × Fail

Any Text WCAG AA × Fail

Large Text (above 18pt) WCAG AAA × Fail

Any Text WCAG AAA × Fail

# Black Background



This preview shows how the Decimal color 15318703 looks on a black background.

## Color Contrast Check

Large Text (above 18pt) WCAG AA ✓ Pass

Any Text WCAG AA ✓ Pass

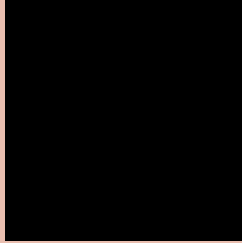
Large Text (above 18pt) WCAG AAA ✓ Pass

Any Text WCAG AAA ✓ Pass

If you want to check with other color combinations, try the [Color Contrast Checker](#).



## Decimal 15318703 Background



This preview shows how black text looks on a background with the Decimal color 15318703.

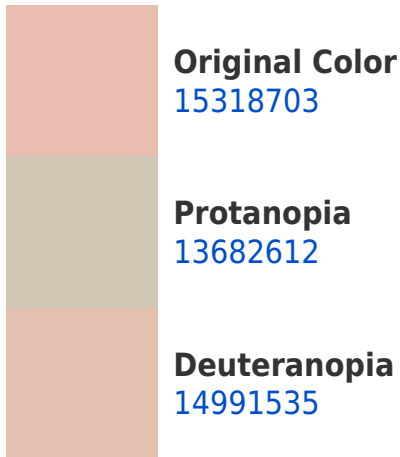



This preview shows how white text looks on a background with the Decimal color 15318703.

# Color Blindness Simulation

Color vision deficiency is a very complex topic, and I could not describe the different causes any better than Wikipedia does, so if you want to learn more, you should check out their [article about color blindness](#).

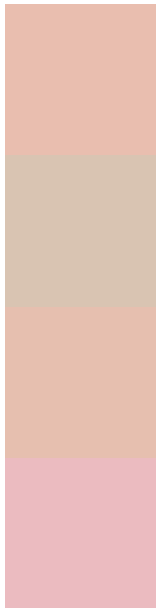
## Dichromacy





**Tritanopia**  
15514313

# Trichromacy



**Original Color**  
15318703

**Protanomaly**  
14271666

**Deuteranomaly**  
15122351

**Tritanomaly**  
15449024

# Monochromacy



**Original Color**  
15318703

**Achromatopsia**  
13224393

**Achromatomaly**  
14009792

# CSS Examples

## Text

The CSS property to change the color of the text to Decimal 15318703 is called "color". The color property can be set on classes, ids or directly on the HTML element.

This example shows how text in the color #E9BEAF looks like.

```
.text, #text, p{  
    color:#E9BEAF  
}
```

If you want to add a text shadow in that color use the text-shadow property, you can generate a text shadow directly with our [CSS Text Shadow Generator](#).

Here you see how black text with a 4 pixel #E9BEAF colored shadow looks like.

```
.shadow{ text-shadow: 4px 4px 2px #E9BEAF
}
```

## Border

The CSS property to change the border of an element to Decimal 15318703 is called "border". The border property can be set on classes, ids or directly on the HTML element.

This example shows the color as border, it can be applied via the CSS property "border" or "border-color".

```
.border, #border, table{ border:4px solid
#E9BEAF }
```

If only the border color should be changed use the property `border-color`.

```
.border{ border-color:#E9BEAF }
```

If you want to add a box shadow in that color use:

Here you see how a box with a 4 pixel #E9BEAF colored shadow looks like.

```
.boxshadow{ -moz-box-shadow:4px 4px 4px  
4px #E9BEAF; -webkit-box-shadow:4px 4px  
4px 4px #E9BEAF; box-shadow:4px 4px 4px  
4px #E9BEAF }
```

# Background

The CSS property to change the background color of an element to Decimal 15318703 is called "background". The background property can be set on classes, ids or directly on the HTML element.

```
.background, #background, body{  
background:#E9BEAF }
```

If only the background color should be changed can be used:

```
.background{ background-color:#E9BEAF }
```

This example shows the color as background, it is applied via the CSS property "background".

To optimize and compress your CSS code, you can use our [online CSS compressor and optimizer](#) based on csstidy. If you want to create a linear or radial gradient as background or border, check our [CSS Gradient Generator](#).



Hey! You found this booklet interesting? Support Converting Colors with the new Membership Option!

The pro membership hides all ads, plus gives you double the colors in the color bucket, and more awesome pro features!

**[Learn more, Memberships starting at \\$2.50/m!](#)**

**Follow me  
on Twitter!**

@ConvertingColor