

Converting Colors

Decimal(15319486)

Have a look what the booklet for
Decimal(15319486) contains.

Decimal(15319486)	3
<i>Conversions</i>	4
<i>Details</i>	6
<i>Harmonies</i>	11
<i>Previews</i>	23
<i>Color Blindness Simulation</i>	26
<i>CSS Examples</i>	29

Color

Decimal(15319486)

Conversions

Conversions Part 1

Format	Color
Hex	E9C1BE
RGB	233, 193, 190
RGB Percent	91%, 76%, 75%
CMY	0.0863, 0.2431, 0.2549
CMYK	0.00, 0.17, 0.18, 0.09
HSL	4°, 49%, 83%
HSV	4°, 18%, 91%
XYZ	61.9685, 59.1813, 56.8722
YIQ	204.6180, 24.8030, 7.5470

Conversions

Conversions Part 2

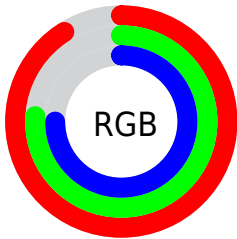
Format	Color
R _Y B	233, 193, 190
Decimal	15319486
CIE Lab	81.39, 13.77, 6.85
CIE LCh	81, 15.378, 26.442
Yxy	59.1813, 0.3481, 0.3324
Android (android.graphics.Color)	4293509566 (0xFFE9C1BE)
YUV	204.6180, -7.2067, 24.8910
Hunter-Lab	76.9294, 9.1598, 10.0187

Details

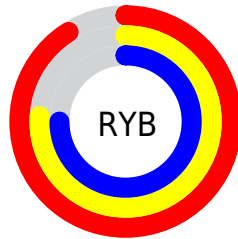
The Decimal color **15319486** is a light color, and the websafe version is hex **FFCCCC**. A complement of this color would be **12510953**, and the grayscale version is **13487565**.

A 20% lighter version of the original color is **16775926**, and **11635593** is the 20% darker color. If you saturate the color by 10%, you get **15313831**, and if you desaturate by 10%, it is **15325141**.

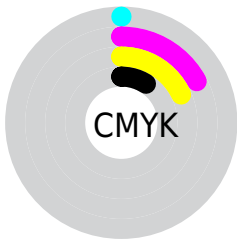
Distribution



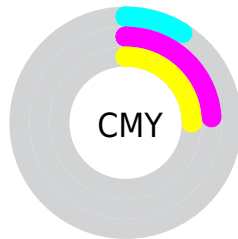
- Red (91%)
- Green (76%)
- Blue (75%)



- Red (91%)
- Yellow (76%)
- Blue (75%)



- Cyan (0%)
- Magenta (17%)
- Yellow (18%)
- Black (9%)



- Cyan (9%)
- Magenta (24%)
- Yellow (25%)

Brightness & Saturation Gradients

These gradients show how the Decimal color 15319486 changes by changing the brightness by 10 percent. The first figure shows a shift by +10% for each color and the second figure -10%.

Similar to the brightness gradients but the following saturation gradients show a change of the Decimal color 15319486 by changing the saturation by 10% instead.

 15319486

 15319486

16777215

 13477539

 16775926

 11635593

 9859695

 8083799

 6439488

 4795178

 3282453

 1966080

 0

 15319486

 15319486

 15313831

 15325141

 15308431

 15330541

 15302776

 15335423

 15297121

 15291722

 15286066

 15280411

 15275012

 15273984

Harmonies

Analogous

The Analogous color harmony consists of three colors that are next to each other on the color wheel.



15122892



15319486



14992563

Triad

The Triadic color harmony groups three colors that are evenly spaced from another and form a triangle on the color wheel.



15319486



12046778



12176615

Complementary

The Complementary color scheme is a pair of colors which are on the opposite of each other on the color wheel.



15319486



12510953

Split Complementary

Split-complementary colors differ from the complementary color scheme. The scheme consists of three colors, the original color and two neighbors of the complement color.



11194594



15319486



11195336

Square

The Square scheme is like the rectangle color scheme, but the four colors are evenly spaced on the color wheel.



15319486



13159856



10867414



13354980

Rectangle

The Rectangle color scheme consists of four colors that form a rectangle on the color wheel.



15319486



14469039



10867414



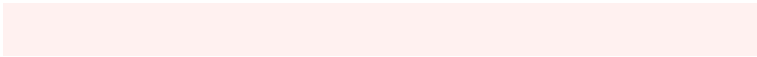
11783654

Sweetspot

The Sweet Spot groups the original color and five complimentary colors.



15319486



16773616



15318758



8419191



0



8421504

Same Dimension

The Same Dimension uses a secret algorithm to generate beautiful new colors.



15319486



16763847



15324862



7694954



11865344



3539968

Inverse Universe

The Inverse Universe completely reimagines the original color for something new.



12510953



13106175



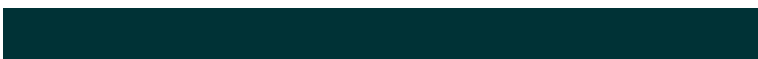
12505577



6976629



43189



12854

Previews

White Background



This preview shows how the Decimal color 15319486 looks on a white background.

Color Contrast Check

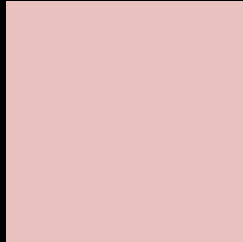
Large Text (above 18pt) WCAG AA × Fail

Any Text WCAG AA × Fail

Large Text (above 18pt) WCAG AAA × Fail

Any Text WCAG AAA × Fail

Black Background



This preview shows how the Decimal color 15319486 looks on a black background.

Color Contrast Check

Large Text (above 18pt) WCAG AA ✓ Pass

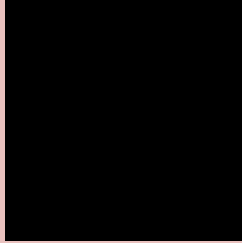
Any Text WCAG AA ✓ Pass

Large Text (above 18pt) WCAG AAA ✓ Pass

Any Text WCAG AAA ✓ Pass

If you want to check with other color combinations, try the [Color Contrast Checker](#).

Decimal 15319486 Background



This preview shows how black text looks on a background with the Decimal color 15319486.




This preview shows how white text looks on a background with the Decimal color 15319486.

Color Blindness Simulation

Color vision deficiency is a very complex topic, and I could not describe the different causes any better than Wikipedia does, so if you want to learn more, you should check out their [article about color blindness](#).

Dichromacy





Tritanopia
15450061

Trichromacy



Original Color
15319486

Protanomaly
14272449

Deuteranomaly
15057598

Tritanomaly
15384776

Monochromacy



Original Color
15319486

Achromatopsia
13487565

Achromatomaly
14141896

CSS Examples

Text

The CSS property to change the color of the text to Decimal 15319486 is called "color". The color property can be set on classes, ids or directly on the HTML element.

This example shows how text in the color #E9C1BE looks like.

```
.text, #text, p{  
    color:#E9C1BE  
}
```

If you want to add a text shadow in that color use the text-shadow property, you can generate a text shadow directly with our [CSS Text Shadow Generator](#).

Here you see how black text with a 4 pixel #E9C1BE colored shadow looks like.

```
.shadow{ text-shadow: 4px 4px 2px #E9C1BE
}
```

Border

The CSS property to change the border of an element to Decimal 15319486 is called "border". The border property can be set on classes, ids or directly on the HTML element.

This example shows the color as border, it can be applied via the CSS property "border" or "border-color".

```
.border, #border, table{ border:4px solid
#E9C1BE }
```

If only the border color should be changed use the property `border-color`.

```
.border{ border-color:#E9C1BE }
```

If you want to add a box shadow in that color use:

Here you see how a box with a 4 pixel #E9C1BE colored shadow looks like.

```
.boxshadow{ -moz-box-shadow:4px 4px 4px  
4px #E9C1BE; -webkit-box-shadow:4px 4px  
4px 4px #E9C1BE; box-shadow:4px 4px 4px  
4px #E9C1BE }
```

Background

The CSS property to change the background color of an element to Decimal 15319486 is called "background". The background property can be set on classes, ids or directly on the HTML element.

```
.background, #background, body{  
background:#E9C1BE }
```

If only the background color should be changed can be used:

```
.background{ background-color:#E9C1BE }
```

This example shows the color as background, it is applied via the CSS property "background".

To optimize and compress your CSS code, you can use our [online CSS compressor and optimizer](#) based on csstidy. If you want to create a linear or radial gradient as background or border, check our [CSS Gradient Generator](#).

Hey! You found this booklet interesting? Support Converting Colors with the new Membership Option!

The pro membership hides all ads, plus gives you double the colors in the color bucket, and more awesome pro features!

[Learn more, Memberships starting at \\$2.50/m!](#)

**Follow me
on Twitter!**

@ConvertingColor