

Converting Colors

Decimal(15320233)

Have a look what the booklet for
Decimal(15320233) contains.

Decimal(15320233)	3
<i>Conversions</i>	4
<i>Details</i>	6
<i>Harmonies</i>	11
<i>Previews</i>	23
<i>Color Blindness Simulation</i>	26
<i>CSS Examples</i>	29

Color

Decimal(15320233)

Conversions

Conversions Part 1

Format	Color
Hex	E9C4A9
RGB	233, 196, 169
RGB Percent	91%, 77%, 66%
CMY	0.0863, 0.2314, 0.3373
CMYK	0.00, 0.16, 0.27, 0.09
HSL	25°, 59%, 79%
HSV	25°, 27%, 91%
XYZ	60.5056, 59.6681, 45.8642
YIQ	203.9850, 30.7190, -0.5530

Conversions

Conversions Part 2

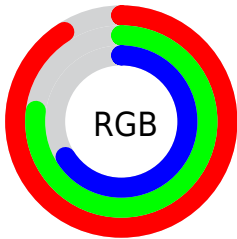
Format	Color
R _Y B	233, 216, 169
Decimal	15320233
CIE Lab	81.66, 9.18, 18.45
CIE LCh	82, 20.610, 63.544
Yxy	59.6681, 0.3644, 0.3594
Android (android.graphics.Color)	4293510313 (0xFFE9C4A9)
YUV	203.9850, -17.2476, 25.4462
Hunter-Lab	77.2451, 4.6390, 18.8682

Details

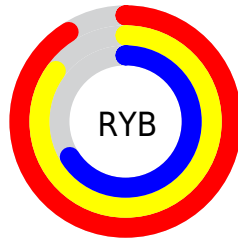
The Decimal color **15320233** is a light color, and the websafe version is hex **FFCC99**. A complement of this color would be **11128553**, and the grayscale version is **13421772**.

A 20% lighter version of the original color is **16776672**, and **11570805** is the 20% darker color. If you saturate the color by 10%, you get **15316882**, and if you desaturate by 10%, it is **15323584**.

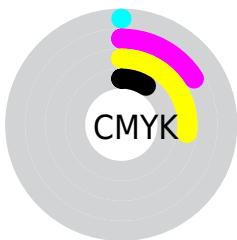
Distribution



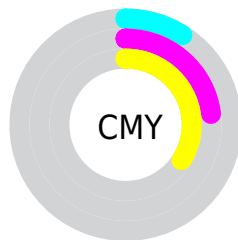
- Red (91%)
- Green (77%)
- Blue (66%)



- Red (91%)
- Yellow (85%)
- Blue (66%)



- Cyan (0%)
- Magenta (16%)
- Yellow (27%)
- Black (9%)



- Cyan (9%)
- Magenta (23%)
- Yellow (34%)

Brightness & Saturation Gradients

These gradients show how the Decimal color 15320233 changes by changing the brightness by 10 percent. The first figure shows a shift by +10% for each color and the second figure -10%.

Similar to the brightness gradients but the following saturation gradients show a change of the Decimal color 15320233 by changing the saturation by 10% instead.

 15320233

 15320233

16777215

 13412750

 16776672

 11570805

16777213

 9794908

 8084548

 6374702

 4730393

 3217664

 1703936

 0

 15320233

 15320233

 15316882

 15323584

 15313274

 15327192

 15309923

 15330543

 15306316

 15334143

 15302965

 15335423

 15299357

 15296006

 15294976

Harmonies

Analogous

The Analogous color harmony consists of three colors that are next to each other on the color wheel.



15974326



15320233



14207653

Triad

The Triadic color harmony groups three colors that are evenly spaced from another and form a triangle on the color wheel.



15320233



10278605



13747691

Complementary

The Complementary color scheme is a pair of colors which are on the opposite of each other on the color wheel.



15320233



11128553

Split Complementary

Split-complementary colors differ from the complementary color scheme. The scheme consists of three colors, the original color and two neighbors of the complement color.



12111089



15320233



9950688

Square

The Square scheme is like the rectangle color scheme, but the four colors are evenly spaced on the color wheel.



15320233



11392185



10670829



15122653

Rectangle

The Rectangle color scheme consists of four colors that form a rectangle on the color wheel.



15320233



13291175



10670829



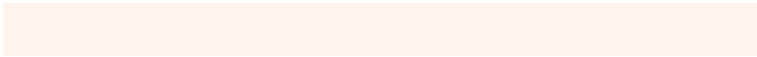
13223918

Sweetspot

The Sweet Spot groups the original color and five complimentary colors.



15320233



16774123



15313358



8419443



0



8421504

Same Dimension

The Same Dimension uses a secret algorithm to generate beautiful new colors.



15320233



16764587



15328425



7696234



11881472



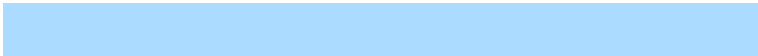
3544832

Inverse Universe

The Inverse Universe completely reimagines the original color for something new.



11128553



11262975



11120361



6975605



27061



7990

Previews

White Background



This preview shows how the Decimal color 15320233 looks on a white background.

Color Contrast Check

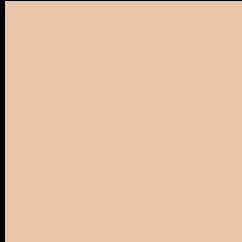
Large Text (above 18pt) WCAG AA × Fail

Any Text WCAG AA × Fail

Large Text (above 18pt) WCAG AAA × Fail

Any Text WCAG AAA × Fail

Black Background



This preview shows how the Decimal color 15320233 looks on a black background.

Color Contrast Check

Large Text (above 18pt) WCAG AA ✓ Pass

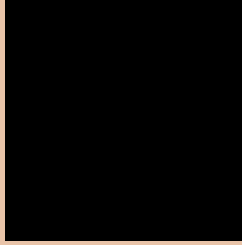
Any Text WCAG AA ✓ Pass

Large Text (above 18pt) WCAG AAA ✓ Pass

Any Text WCAG AAA ✓ Pass

If you want to check with other color combinations, try the [Color Contrast Checker](#).

Decimal 15320233 Background



This preview shows how black text looks on a background with the Decimal color 15320233.



This preview shows how white text looks on a background with the Decimal color 15320233.

Color Blindness Simulation

Color vision deficiency is a very complex topic, and I could not describe the different causes any better than Wikipedia does, so if you want to learn more, you should check out their [article about color blindness](#).

Dichromacy



Original Color
15320233

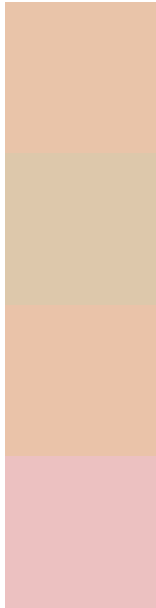
Protanopia
14076844

Deuteranopia
15451049



Tritanopia
15581134

Trichromacy



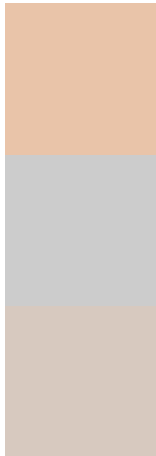
Original Color
15320233

Protanomaly
14534827

Deuteranomaly
15385513

Tritanomaly
15516097

Monochromacy



Original Color
15320233

Achromatopsia
13421772

Achromatomaly
14141887

CSS Examples

Text

The CSS property to change the color of the text to Decimal 15320233 is called "color". The color property can be set on classes, ids or directly on the HTML element.

This example shows how text in the color #E9C4A9 looks like.

```
.text, #text, p{  
    color:#E9C4A9  
}
```

If you want to add a text shadow in that color use the text-shadow property, you can generate a text shadow directly with our [CSS Text Shadow Generator](#).

Here you see how black text with a 4 pixel #E9C4A9 colored shadow looks like.

```
.shadow{ text-shadow: 4px 4px 2px #E9C4A9
}
```

Border

The CSS property to change the border of an element to Decimal 15320233 is called "border". The border property can be set on classes, ids or directly on the HTML element.

This example shows the color as border, it can be applied via the CSS property "border" or "border-color".

```
.border, #border, table{ border:4px solid
#E9C4A9 }
```

If only the border color should be changed use the property `border-color`.

```
.border{ border-color:#E9C4A9 }
```

If you want to add a box shadow in that color use:

Here you see how a box with a 4 pixel #E9C4A9 colored shadow looks like.

```
.boxshadow{ -moz-box-shadow:4px 4px 4px  
4px #E9C4A9; -webkit-box-shadow:4px 4px  
4px 4px #E9C4A9; box-shadow:4px 4px 4px  
4px #E9C4A9 }
```

Background

The CSS property to change the background color of an element to Decimal 15320233 is called "background". The background property can be set on classes, ids or directly on the HTML element.

```
.background, #background, body{  
background:#E9C4A9 }
```

If only the background color should be changed can be used:

```
.background{ background-color:#E9C4A9 }
```

This example shows the color as background, it is applied via the CSS property "background".

To optimize and compress your CSS code, you can use our [online CSS compressor and optimizer](#) based on csstidy. If you want to create a linear or radial gradient as background or border, check our [CSS Gradient Generator](#).

Hey! You found this booklet interesting? Support Converting Colors with the new Membership Option!

The pro membership hides all ads, plus gives you double the colors in the color bucket, and more awesome pro features!

[Learn more, Memberships starting at \\$2.50/m!](#)

**Follow me
on Twitter!**

@ConvertingColor