

Converting Colors

Decimal(15322297)

Have a look what the booklet for
Decimal(15322297) contains.

Decimal(15322297)	3
<i>Conversions</i>	4
<i>Details</i>	6
<i>Harmonies</i>	11
<i>Previews</i>	23
<i>Color Blindness Simulation</i>	26
<i>CSS Examples</i>	29

Color

Decimal(15322297)

Conversions

Conversions Part 1

Format	Color
Hex	E9CCB9
RGB	233, 204, 185
RGB Percent	91%, 80%, 73%
CMY	0.0863, 0.2000, 0.2745
CMYK	0.00, 0.12, 0.21, 0.09
HSL	24°, 52%, 82%
HSV	24°, 21%, 91%
XYZ	63.9541, 64.0122, 54.8838
YIQ	210.5050, 23.3830, 0.2390

Conversions

Conversions Part 2

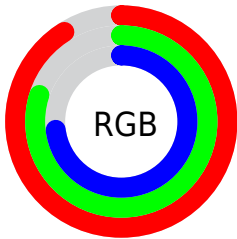
Format	Color
R _Y B	233, 216, 185
Decimal	15322297
CIE Lab	83.97, 7.23, 13.20
CIE LCh	84, 15.046, 61.296
Yxy	64.0122, 0.3498, 0.3501
Android (android.graphics.Color)	4293512377 (0xFFE9CCB9)
YUV	210.5050, -12.5740, 19.7281
Hunter-Lab	80.0076, 2.6707, 15.3334

Details

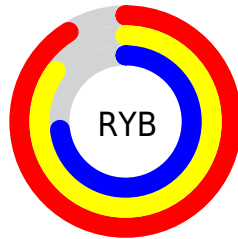
The Decimal color **15322297** is a light color, and the websafe version is hex **FFCCCC**. A complement of this color would be **12179177**, and the grayscale version is **13882323**.

A 20% lighter version of the original color is **16777201**, and **11638404** is the 20% darker color. If you saturate the color by 10%, you get **15318690**, and if you desaturate by 10%, it is **15325904**.

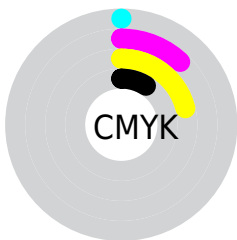
Distribution



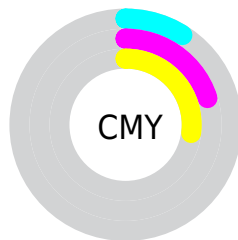
- Red (91%)
- Green (80%)
- Blue (73%)



- Red (91%)
- Yellow (85%)
- Blue (73%)



- Cyan (0%)
- Magenta (12%)
- Yellow (21%)
- Black (9%)



- Cyan (9%)
- Magenta (20%)
- Yellow (27%)

Brightness & Saturation Gradients

These gradients show how the Decimal color 15322297 changes by changing the brightness by 10 percent. The first figure shows a shift by +10% for each color and the second figure -10%.

Similar to the brightness gradients but the following saturation gradients show a change of the Decimal color 15322297 by changing the saturation by 10% instead.

 15322297

 15322297

16777215

 13480350

 16777201

 11638404

 9862251

 8151890

 6441787

 4863270

 3284753

 1902592

 0

 15322297

 15322297

 15318690

 15325904

 15315082

 15329512

 15311475

 15333119

 15307868

 15335423

 15304260

 15300653

 15296790

 15293440

Harmonies

Analogous

The Analogous color harmony consists of three colors that are next to each other on the color wheel.



15714755



15322297



14471605

Triad

The Triadic color harmony groups three colors that are evenly spaced from another and form a triangle on the color wheel.



15322297



11655889



14012138

Complementary

The Complementary color scheme is a pair of colors which are on the opposite of each other on the color wheel.



15322297



12179177

Split Complementary

Split-complementary colors differ from the complementary color scheme. The scheme consists of three colors, the original color and two neighbors of the complement color.



12833517



15322297



11393504

Square

The Square scheme is like the rectangle color scheme, but the four colors are evenly spaced on the color wheel.



15322297



12441795



11851754



15059679

Rectangle

The Rectangle color scheme consists of four colors that form a rectangle on the color wheel.



15322297



13817015



11851754



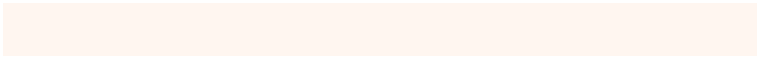
13619180

Sweetspot

The Sweet Spot groups the original color and five complimentary colors.



15322297



16774896



15317463



8419959



0



8421504

Same Dimension

The Same Dimension uses a secret algorithm to generate beautiful new colors.



15322297



16767167



15328185



7695978



11880448



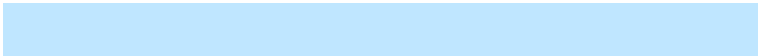
3544320

Inverse Universe

The Inverse Universe completely reimagines the original color for something new.



12179177



12576511



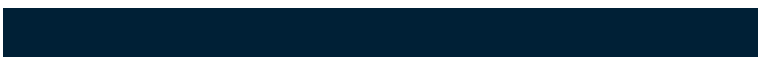
12173289



6975861



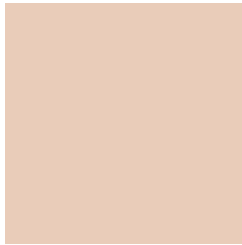
28085



8246

Previews

White Background



This preview shows how the Decimal color 15322297 looks on a white background.

Color Contrast Check

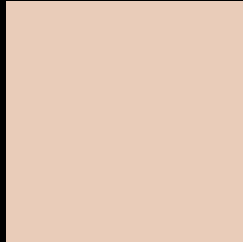
Large Text (above 18pt) WCAG AA × Fail

Any Text WCAG AA × Fail

Large Text (above 18pt) WCAG AAA × Fail

Any Text WCAG AAA × Fail

Black Background



This preview shows how the Decimal color 15322297 looks on a black background.

Color Contrast Check

Large Text (above 18pt) WCAG AA ✓ Pass

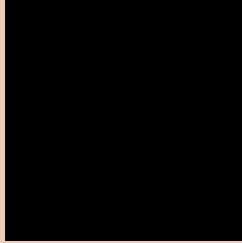
Any Text WCAG AA ✓ Pass

Large Text (above 18pt) WCAG AAA ✓ Pass

Any Text WCAG AAA ✓ Pass

If you want to check with other color combinations, try the [Color Contrast Checker](#).

Decimal 15322297 Background



This preview shows how black text looks on a background with the Decimal color 15322297.




This preview shows how white text looks on a background with the Decimal color 15322297.

Color Blindness Simulation

Color vision deficiency is a very complex topic, and I could not describe the different causes any better than Wikipedia does, so if you want to learn more, you should check out their [article about color blindness](#).

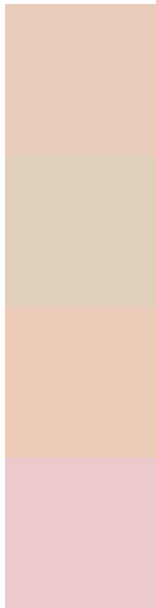
Dichromacy





Tritanopia
15583447

Trichromacy



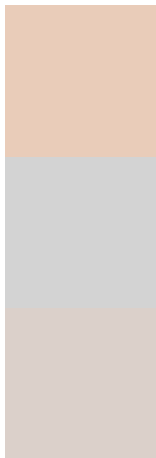
Original Color
15322297

Protanomaly
14667707

Deuteranomaly
15584185

Tritanomaly
15518156

Monochromacy



Original Color
15322297

Achromatopsia
13882323

Achromatomaly
14405834

CSS Examples

Text

The CSS property to change the color of the text to Decimal 15322297 is called "color". The color property can be set on classes, ids or directly on the HTML element.

This example shows how text in the color #E9CCB9 looks like.

```
.text, #text, p{  
    color:#E9CCB9  
}
```

If you want to add a text shadow in that color use the text-shadow property, you can generate a text shadow directly with our [CSS Text Shadow Generator](#).

Here you see how black text with a 4 pixel #E9CCB9 colored shadow looks like.

```
.shadow{ text-shadow: 4px 4px 2px #E9CCB9
}
```

Border

The CSS property to change the border of an element to Decimal 15322297 is called "border". The border property can be set on classes, ids or directly on the HTML element.

This example shows the color as border, it can be applied via the CSS property "border" or "border-color".

```
.border, #border, table{ border:4px solid
#E9CCB9 }
```

If only the border color should be changed use the property `border-color`.

```
.border{ border-color:#E9CCB9 }
```

If you want to add a box shadow in that color use:

Here you see how a box with a 4 pixel #E9CCB9 colored shadow looks like.

```
.boxshadow{ -moz-box-shadow:4px 4px 4px  
4px #E9CCB9; -webkit-box-shadow:4px 4px  
4px 4px #E9CCB9; box-shadow:4px 4px 4px  
4px #E9CCB9 }
```

Background

The CSS property to change the background color of an element to Decimal 15322297 is called "background". The background property can be set on classes, ids or directly on the HTML element.

```
.background, #background, body{  
background:#E9CCB9 }
```

If only the background color should be changed can be used:

```
.background{ background-color:#E9CCB9 }
```

This example shows the color as background, it is applied via the CSS property "background".

To optimize and compress your CSS code, you can use our [online CSS compressor and optimizer](#) based on csstidy. If you want to create a linear or radial gradient as background or border, check our [CSS Gradient Generator](#).

Hey! You found this booklet interesting? Support Converting Colors with the new Membership Option!

The pro membership hides all ads, plus gives you double the colors in the color bucket, and more awesome pro features!

[Learn more, Memberships starting at \\$2.50/m!](#)

**Follow me
on Twitter!**

@ConvertingColor