

Converting Colors

Decimal(15323344)

Have a look what the booklet for
Decimal(15323344) contains.

Decimal(15323344)	3
<i>Conversions</i>	4
<i>Details</i>	6
<i>Harmonies</i>	11
<i>Previews</i>	23
<i>Color Blindness Simulation</i>	26
<i>CSS Examples</i>	29

Color

Decimal(15323344)

Conversions

Conversions Part 1

Format	Color
Hex	E9D0D0
RGB	233, 208, 208
RGB Percent	91%, 82%, 82%
CMY	0.0863, 0.1843, 0.1843
CMYK	0.00, 0.11, 0.11, 0.09
HSL	0°, 36%, 86%
HSV	0°, 11%, 91%
XYZ	67.5453, 66.9895, 69.0447
YIQ	215.4750, 14.9000, 5.3000

Conversions

Conversions Part 2

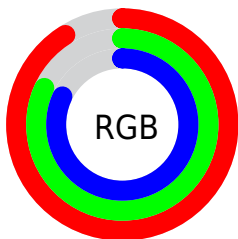
Format	Color
R _Y B	233, 208, 208
Decimal	15323344
CIE Lab	85.50, 8.70, 3.17
CIE LCh	85, 9.259, 20.037
Yxy	66.9895, 0.3318, 0.3291
Android (android.graphics.Color)	4293513424 (0xFFE9D0D0)
YUV	215.4750, -3.6852, 15.3694
Hunter-Lab	81.8471, 4.0769, 7.2770

Details

The Decimal color **15323344** is a light color, and the websafe version is hex **CCCCCC**. A complement of this color would be **13691369**, and the grayscale version is **14211288**.

A 20% lighter version of the original color is **16777215**, and **11639450** is the 20% darker color. If you saturate the color by 10%, you get **15317433**, and if you desaturate by 10%, it is **15329255**.

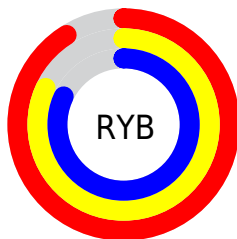
Distribution



Red (91%)

Green (82%)

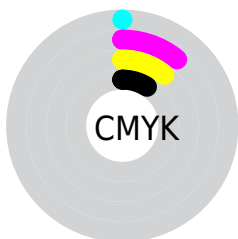
Blue (82%)



Red (91%)

Yellow (82%)

Blue (82%)

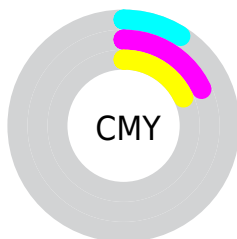


Cyan (0%)

Magenta (11%)

Yellow (11%)

Black (9%)



Cyan (9%)

Magenta (18%)

Yellow (18%)

Brightness & Saturation Gradients

These gradients show how the Decimal color 15323344 changes by changing the brightness by 10 percent. The first figure shows a shift by +10% for each color and the second figure -10%.

Similar to the brightness gradients but the following saturation gradients show a change of the Decimal color 15323344 by changing the saturation by 10% instead.

15323344

16777215

15323344

13481140

11639450

9863296

8152935

6508367

4929592

3416611

2100493

0

 15323344

 15323344

 15317433

 15329255

 15311265

 15335423

 15305354

 15299443

 15293275

 15287364

 15281453

 15275542

 15269888

Harmonies

Analogous

The Analogous color harmony consists of three colors that are next to each other on the color wheel.



15126745



15323344



15192521

Triad

The Triadic color harmony groups three colors that are evenly spaced from another and form a triangle on the color wheel.



15323344



13425098



13293543

Complementary

The Complementary color scheme is a pair of colors which are on the opposite of each other on the color wheel.



15323344



13691369

Split Complementary

Split-complementary colors differ from the complementary color scheme. The scheme consists of three colors, the original color and two neighbors of the complement color.



12770019



15323344



12901330

Square

The Square scheme is like the rectangle color scheme, but the four colors are evenly spaced on the color wheel.



15323344



14145477



12639195



13948134

Rectangle

The Rectangle color scheme consists of four colors that form a rectangle on the color wheel.



15323344



14930885



12639195



13097190

Sweetspot

The Sweet Spot groups the original color and five complimentary colors.



15323344



16775159



15323369



8419962



0



8421504

Same Dimension

The Same Dimension uses a secret algorithm to generate beautiful new colors.



15323344



16768734



15326672



7694954



11862016



3538944

Inverse Universe

The Inverse Universe completely reimagines the original color for something new.



13691369



14614527



13688297



6976885



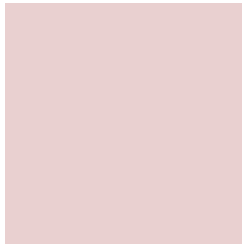
46517



13878

Previews

White Background



This preview shows how the Decimal color 15323344 looks on a white background.

Color Contrast Check

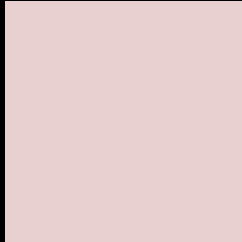
Large Text (above 18pt) WCAG AA × Fail

Any Text WCAG AA × Fail

Large Text (above 18pt) WCAG AAA × Fail

Any Text WCAG AAA × Fail

Black Background



This preview shows how the Decimal color 15323344 looks on a black background.

Color Contrast Check

Large Text (above 18pt) WCAG AA ✓ Pass

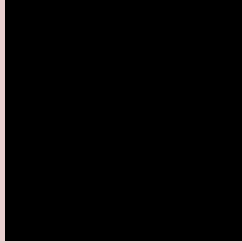
Any Text WCAG AA ✓ Pass

Large Text (above 18pt) WCAG AAA ✓ Pass

Any Text WCAG AAA ✓ Pass

If you want to check with other color combinations, try the [Color Contrast Checker](#).

Decimal 15323344 Background



This preview shows how black text looks on a background with the Decimal color 15323344.




This preview shows how white text looks on a background with the Decimal color 15323344.

Color Blindness Simulation

Color vision deficiency is a very complex topic, and I could not describe the different causes any better than Wikipedia does, so if you want to learn more, you should check out their [article about color blindness](#).

Dichromacy





Tritanopia
15453918

Trichromacy



Original Color
15323344

Protanomaly
14668754

Deuteranomaly
15454160

Tritanomaly
15388633

Monochromacy



Original Color
15323344

Achromatopsia
14145495

Achromatomaly
14603476

CSS Examples

Text

The CSS property to change the color of the text to Decimal 15323344 is called "color". The color property can be set on classes, ids or directly on the HTML element.

This example shows how text in the color #E9D0D0 looks like.

```
.text, #text, p{  
  color:#E9D0D0  
}
```

If you want to add a text shadow in that color use the text-shadow property, you can generate a text shadow directly with our [CSS Text Shadow Generator](#).

Here you see how black text with a 4 pixel #E9D0D0 colored shadow looks like.

```
.shadow{ text-shadow: 4px 4px 2px #E9D0D0
}
```

Border

The CSS property to change the border of an element to Decimal 15323344 is called "border". The border property can be set on classes, ids or directly on the HTML element.

This example shows the color as border, it can be applied via the CSS property "border" or "border-color".

```
.border, #border, table{ border:4px solid
#E9D0D0 }
```

If only the border color should be changed use the property `border-color`.

```
.border{ border-color:#E9D0D0 }
```

If you want to add a box shadow in that color use:

Here you see how a box with a 4 pixel #E9D0D0 colored shadow looks like.

```
.boxshadow{ -moz-box-shadow:4px 4px 4px  
4px #E9D0D0; -webkit-box-shadow:4px 4px  
4px 4px #E9D0D0; box-shadow:4px 4px 4px  
4px #E9D0D0 }
```

Background

The CSS property to change the background color of an element to Decimal 15323344 is called "background". The background property can be set on classes, ids or directly on the HTML element.

```
.background, #background, body{  
background:#E9D0D0 }
```

If only the background color should be changed can be used:

```
.background{ background-color:#E9D0D0 }
```

This example shows the color as background, it is applied via the CSS property "background".

To optimize and compress your CSS code, you can use our [online CSS compressor and optimizer](#) based on csstidy. If you want to create a linear or radial gradient as background or border, check our [CSS Gradient Generator](#).

Hey! You found this booklet interesting? Support Converting Colors with the new Membership Option!

The pro membership hides all ads, plus gives you double the colors in the color bucket, and more awesome pro features!

[Learn more, Memberships starting at \\$2.50/m!](#)

**Follow me
on Twitter!**

@ConvertingColor