

# Converting Colors

Decimal(15324098)

Have a look what the booklet for  
Decimal(15324098) contains.

<b>Decimal(15324098)</b> .....	3
<i><b>Conversions</b></i> .....	4
<i><b>Details</b></i> .....	6
<i><b>Harmonies</b></i> .....	11
<i><b>Previews</b></i> .....	23
<i><b>Color Blindness Simulation</b></i> .....	26
<i><b>CSS Examples</b></i> .....	29

# **Color**

**Decimal(15324098)**

# Conversions

## Conversions Part 1

Format	Color
Hex	E9D3C2
RGB	233, 211, 194
RGB Percent	91%, 83%, 76%
CMY	0.0863, 0.1725, 0.2392
CMYK	0.00, 0.09, 0.17, 0.09
HSL	26°, 47%, 84%
HSV	26°, 17%, 91%
XYZ	66.6361, 67.8072, 60.6149
YIQ	215.6400, 18.5690, -0.6230

# Conversions

## Conversions Part 2

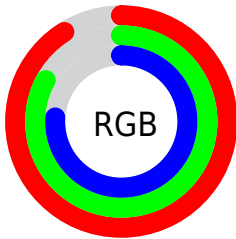
Format	Color
R <sub>Y</sub> B	233, 224, 194
Decimal	15324098
CIE Lab	85.91, 4.91, 11.18
CIE LCh	86, 12.213, 66.271
Yxy	67.8072, 0.3416, 0.3476
Android (android.graphics.Color)	4293514178 (0xFFE9D3C2)
YUV	215.6400, -10.6685, 15.2247
Hunter-Lab	82.3451, 0.3435, 13.9977

# Details

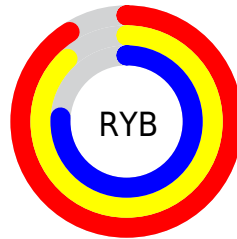
The Decimal color **15324098** is a light color, and the websafe version is hex **CCCCCC**. A complement of this color would be **12769513**, and the grayscale version is **14211288**.

A 20% lighter version of the original color is **16777210**, and **11640204** is the 20% darker color. If you saturate the color by 10%, you get **15320747**, and if you desaturate by 10%, it is **15327449**.

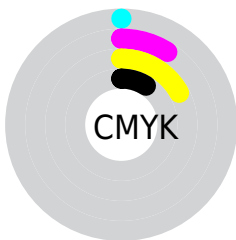
# Distribution



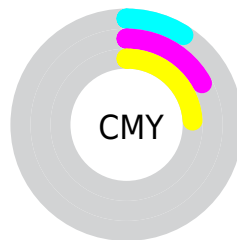
- Red (91%)
- Green (83%)
- Blue (76%)



- Red (91%)
- Yellow (88%)
- Blue (76%)



- Cyan (0%)
- Magenta (9%)
- Yellow (17%)
- Black (9%)



- Cyan (9%)
- Magenta (17%)
- Yellow (24%)

# Brightness & Saturation Gradients

These gradients show how the Decimal color 15324098 changes by changing the brightness by 10 percent. The first figure shows a shift by +10% for each color and the second figure -10%.

Similar to the brightness gradients but the following saturation gradients show a change of the Decimal color 15324098 by changing the saturation by 10% instead.



 15324098

 15324098

16777215

 13481895

 16777210

 11640204

 9863795

 8153434

 6508867

 4930093

 3351832

 2035712

 0

 15324098

 15324098

 15320747

 15327449

 15317395

 15330801

 15314044

 15334143

 15310437

 15335423

 15307085

 15303734

 15300383

 15297032

 15296000

# Harmonies

## Analogous

The Analogous color harmony consists of three colors that are next to each other on the color wheel.



15716554



15324098



14604224

# Triad

The Triadic color harmony groups three colors that are evenly spaced from another and form a triangle on the color wheel.



15324098



12377817



14472169

# Complementary

The Complementary color scheme is a pair of colors which are on the opposite of each other on the color wheel.



15324098



12769513

# Split Complementary

Split-complementary colors differ from the complementary color scheme. The scheme consists of three colors, the original color and two neighbors of the complement color.



13555694



15324098



12246500

# Square

The Square scheme is like the rectangle color scheme, but the four colors are evenly spaced on the color wheel.



15324098



12901837



12704748



15257824

# Rectangle

The Rectangle color scheme consists of four colors that form a rectangle on the color wheel.



15324098



14014914



12704748



14144747

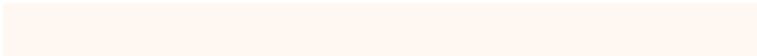


# Sweetspot

The Sweet Spot groups the original color and five complimentary colors.



15324098



16775410



15319768



8420216



0



8421504

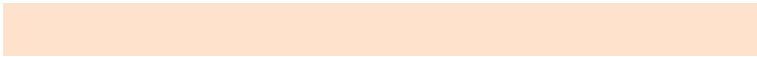


# Same Dimension

The Same Dimension uses a secret algorithm to generate beautiful new colors.



15324098



16769740



15328962



7696234



11882240



3544832

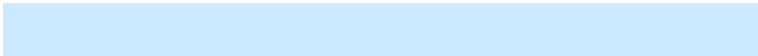


# Inverse Universe

The Inverse Universe completely reimagines the original color for something new.



12769513



13429247



12764649



6975605



26293

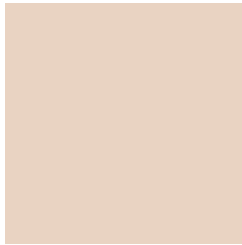


7734



# Previews

## White Background



This preview shows how the Decimal color 15324098 looks on a white background.

## Color Contrast Check

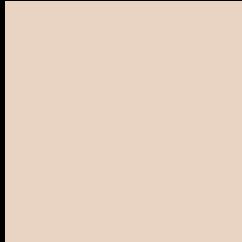
Large Text (above 18pt) WCAG AA × Fail

Any Text WCAG AA × Fail

Large Text (above 18pt) WCAG AAA × Fail

Any Text WCAG AAA × Fail

# Black Background



This preview shows how the Decimal color 15324098 looks on a black background.

## Color Contrast Check

Large Text (above 18pt) WCAG AA ✓ Pass

Any Text WCAG AA ✓ Pass

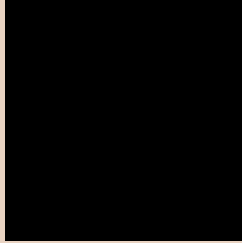
Large Text (above 18pt) WCAG AAA ✓ Pass

Any Text WCAG AAA ✓ Pass

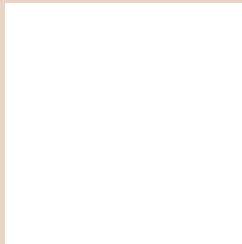
If you want to check with other color combinations, try the [Color Contrast Checker](#).



## Decimal 15324098 Background



This preview shows how black text looks on a background with the Decimal color 15324098.




This preview shows how white text looks on a background with the Decimal color 15324098.

# Color Blindness Simulation

Color vision deficiency is a very complex topic, and I could not describe the different causes any better than Wikipedia does, so if you want to learn more, you should check out their [article about color blindness](#).

## Dichromacy





**Tritanopia**  
15585247

# Trichromacy



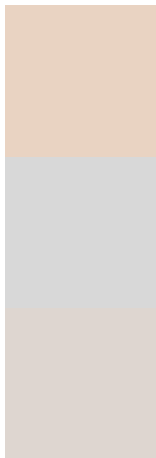
**Original Color**  
15324098

**Protanomaly**  
14931395

**Deuteranomaly**  
15716547

**Tritanomaly**  
15519956

# Monochromacy



**Original Color**  
15324098

**Achromatopsia**  
14211288

**Achromatomaly**  
14603984

# CSS Examples

## Text

The CSS property to change the color of the text to Decimal 15324098 is called "color". The color property can be set on classes, ids or directly on the HTML element.

This example shows how text in the color #E9D3C2 looks like.

```
.text, #text, p{  
    color:#E9D3C2  
}
```

If you want to add a text shadow in that color use the text-shadow property, you can generate a text shadow directly with our [CSS Text Shadow Generator](#).

Here you see how black text with a 4 pixel #E9D3C2 colored shadow looks like.

```
.shadow{ text-shadow: 4px 4px 2px #E9D3C2
}
```

## Border

The CSS property to change the border of an element to Decimal 15324098 is called "border". The border property can be set on classes, ids or directly on the HTML element.

This example shows the color as border, it can be applied via the CSS property "border" or "border-color".

```
.border, #border, table{ border:4px solid
#E9D3C2 }
```

If only the border color should be changed use the property `border-color`.

```
.border{ border-color:#E9D3C2 }
```

If you want to add a box shadow in that color use:

Here you see how a box with a 4 pixel #E9D3C2 colored shadow looks like.

```
.boxshadow{ -moz-box-shadow:4px 4px 4px  
4px #E9D3C2; -webkit-box-shadow:4px 4px  
4px 4px #E9D3C2; box-shadow:4px 4px 4px  
4px #E9D3C2 }
```

# Background

The CSS property to change the background color of an element to Decimal 15324098 is called "background". The background property can be set on classes, ids or directly on the HTML element.

```
.background, #background, body{  
background:#E9D3C2 }
```

If only the background color should be changed can be used:

```
.background{ background-color:#E9D3C2 }
```

This example shows the color as background, it is applied via the CSS property "background".

To optimize and compress your CSS code, you can use our [online CSS compressor and optimizer](#) based on csstidy. If you want to create a linear or radial gradient as background or border, check our [CSS Gradient Generator](#).



Hey! You found this booklet interesting? Support Converting Colors with the new Membership Option!

The pro membership hides all ads, plus gives you double the colors in the color bucket, and more awesome pro features!

**[Learn more, Memberships starting at \\$2.50/m!](#)**

**Follow me  
on Twitter!**

@ConvertingColor