

# Converting Colors

Decimal(15324109)

Have a look what the booklet for  
Decimal(15324109) contains.

<b>Decimal(15324109)</b> .....	3
<i><b>Conversions</b></i> .....	4
<i><b>Details</b></i> .....	6
<i><b>Harmonies</b></i> .....	11
<i><b>Previews</b></i> .....	23
<i><b>Color Blindness Simulation</b></i> .....	26
<i><b>CSS Examples</b></i> .....	29

# **Color**

**Decimal(15324109)**

# Conversions

## Conversions Part 1

Format	Color
Hex	E9D3CD
RGB	233, 211, 205
RGB Percent	91%, 83%, 80%
CMY	0.0863, 0.1725, 0.1961
CMYK	0.00, 0.09, 0.12, 0.09
HSL	13°, 39%, 86%
HSV	13°, 12%, 91%
XYZ	67.9180, 68.3199, 67.3650
YIQ	216.8940, 15.0380, 2.7980

# Conversions

## Conversions Part 2

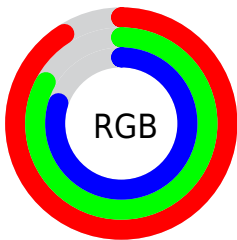
Format	Color
R <sub>Y</sub> B	233, 213, 205
Decimal	15324109
CIE Lab	86.17, 6.64, 5.73
CIE LCh	86, 8.769, 40.783
Yxy	68.3199, 0.3336, 0.3356
Android (android.graphics.Color)	4293514189 (0xFFE9D3CD)
YUV	216.8940, -5.8637, 14.1250
Hunter-Lab	82.6559, 2.0249, 9.5374

# Details

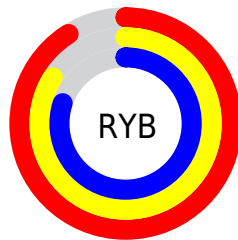
The Decimal color **15324109** is a light color, and the websafe version is hex **CCCCCC**. A complement of this color would be **13493225**, and the grayscale version is **14277081**.

A 20% lighter version of the original color is **16777215**, and **11639959** is the 20% darker color. If you saturate the color by 10%, you get **15319478**, and if you desaturate by 10%, it is **15328740**.

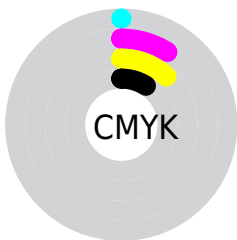
# Distribution



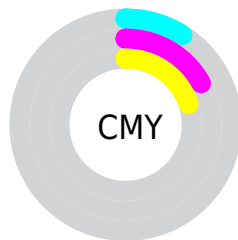
- Red (91%)
- Green (83%)
- Blue (80%)



- Red (91%)
- Yellow (84%)
- Blue (80%)



- Cyan (0%)
- Magenta (9%)
- Yellow (12%)
- Black (9%)



- Cyan (9%)
- Magenta (17%)
- Yellow (20%)

# Brightness & Saturation Gradients

These gradients show how the Decimal color 15324109 changes by changing the brightness by 10 percent. The first figure shows a shift by +10% for each color and the second figure -10%.

Similar to the brightness gradients but the following saturation gradients show a change of the Decimal color 15324109 by changing the saturation by 10% instead.



15324109

15324109

16777215

13481906

11639959

9863805

8153444

6508876

4930102

3417376

2101257

0

15324109

15324109

15319478

15328740

15314590

15333628

15309959

15335423

15305328

15300441

15295809

15291178

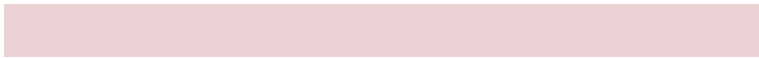
15286547

15282688

# Harmonies

## Analogous

The Analogous color harmony consists of three colors that are next to each other on the color wheel.



15389397



15324109



14996936

# Triad

The Triadic color harmony groups three colors that are evenly spaced from another and form a triangle on the color wheel.



15324109



13229266



13883368

# Complementary

The Complementary color scheme is a pair of colors which are on the opposite of each other on the color wheel.



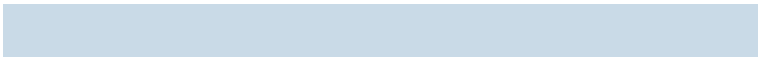
15324109



13493225

# Split Complementary

Split-complementary colors differ from the complementary color scheme. The scheme consists of three colors, the original color and two neighbors of the complement color.



13228775



15324109



12901850

# Square

The Square scheme is like the rectangle color scheme, but the four colors are evenly spaced on the color wheel.



15324109



13818571



12901602



14538212

# Rectangle

The Rectangle color scheme consists of four colors that form a rectangle on the color wheel.



15324109



14604231



12901602



13621480



# Sweetspot

The Sweet Spot groups the original color and five complimentary colors.



15324109



16775157



15322595



8419961



0



8421504

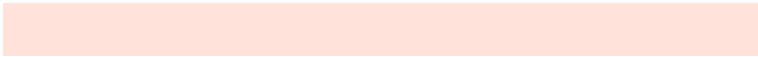


# Same Dimension

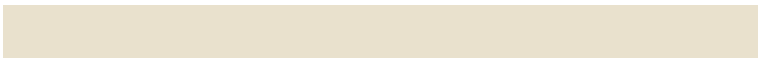
The Same Dimension uses a secret algorithm to generate beautiful new colors.



15324109



16770011



15327693



7695466



11872000



3541760

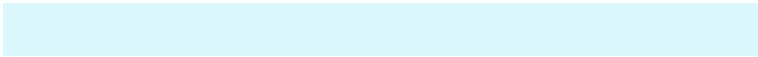


# Inverse Universe

The Inverse Universe completely reimagines the original color for something new.



13493225



14415871



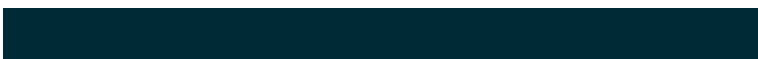
13489641



6976373



36533

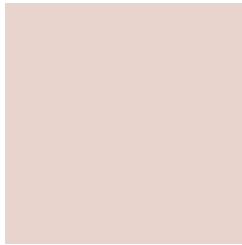


10806



# Previews

## White Background



This preview shows how the Decimal color 15324109 looks on a white background.

## Color Contrast Check

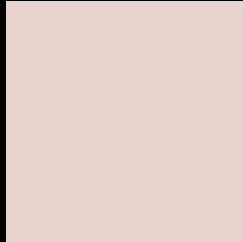
Large Text (above 18pt) WCAG AA × Fail

Any Text WCAG AA × Fail

Large Text (above 18pt) WCAG AAA × Fail

Any Text WCAG AAA × Fail

# Black Background



This preview shows how the Decimal color 15324109 looks on a black background.

## Color Contrast Check

Large Text (above 18pt) WCAG AA ✓ Pass

Any Text WCAG AA ✓ Pass

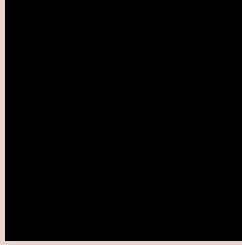
Large Text (above 18pt) WCAG AAA ✓ Pass

Any Text WCAG AAA ✓ Pass

If you want to check with other color combinations, try the [Color Contrast Checker](#).



## Decimal 15324109 Background



This preview shows how black text looks on a background with the Decimal color 15324109.




This preview shows how white text looks on a background with the Decimal color 15324109.

# Color Blindness Simulation

Color vision deficiency is a very complex topic, and I could not describe the different causes any better than Wikipedia does, so if you want to learn more, you should check out their [article about color blindness](#).

## Dichromacy





**Tritanopia**  
15519968

# Trichromacy



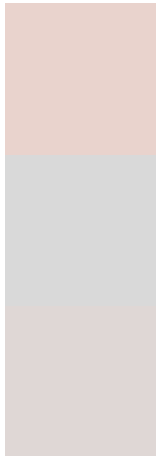
**Original Color**  
15324109

**Protanomaly**  
14800590

**Deuteranomaly**  
15585742

**Tritanomaly**  
15454681

# Monochromacy



**Original Color**  
15324109

**Achromatopsia**  
14277081

**Achromatomaly**  
14669781

# CSS Examples

## Text

The CSS property to change the color of the text to Decimal 15324109 is called "color". The color property can be set on classes, ids or directly on the HTML element.

This example shows how text in the color #E9D3CD looks like.

```
.text, #text, p{  
    color:#E9D3CD  
}
```

If you want to add a text shadow in that color use the text-shadow property, you can generate a text shadow directly with our [CSS Text Shadow Generator](#).

Here you see how black text with a 4 pixel #E9D3CD colored shadow looks like.

```
.shadow{ text-shadow: 4px 4px 2px #E9D3CD }  
}
```

## Border

The CSS property to change the border of an element to Decimal 15324109 is called "border". The border property can be set on classes, ids or directly on the HTML element.

This example shows the color as border, it can be applied via the CSS property "border" or "border-color".

```
.border, #border, table{ border:4px solid #E9D3CD }  
}
```

If only the border color should be changed use the property `border-color`.

```
.border{ border-color:#E9D3CD }
```

If you want to add a box shadow in that color use:

Here you see how a box with a 4 pixel #E9D3CD colored shadow looks like.

```
.boxshadow{ -moz-box-shadow:4px 4px 4px  
4px #E9D3CD; -webkit-box-shadow:4px 4px  
4px 4px #E9D3CD; box-shadow:4px 4px 4px  
4px #E9D3CD }
```

# Background

The CSS property to change the background color of an element to Decimal 15324109 is called "background". The background property can be set on classes, ids or directly on the HTML element.

```
.background, #background, body{  
background:#E9D3CD }
```

If only the background color should be changed can be used:

```
.background{ background-color:#E9D3CD }
```

This example shows the color as background, it is applied via the CSS property "background".

To optimize and compress your CSS code, you can use our [online CSS compressor and optimizer](#) based on csstidy. If you want to create a linear or radial gradient as background or border, check our [CSS Gradient Generator](#).



Hey! You found this booklet interesting? Support Converting Colors with the new Membership Option!

The pro membership hides all ads, plus gives you double the colors in the color bucket, and more awesome pro features!

**[Learn more, Memberships starting at \\$2.50/m!](#)**

**Follow me  
on Twitter!**

@ConvertingColor