

# Converting Colors

Decimal(15324113)

Have a look what the booklet for  
Decimal(15324113) contains.

<b>Decimal(15324113)</b> .....	3
<i><b>Conversions</b></i> .....	4
<i><b>Details</b></i> .....	6
<i><b>Harmonies</b></i> .....	11
<i><b>Previews</b></i> .....	23
<i><b>Color Blindness Simulation</b></i> .....	26
<i><b>CSS Examples</b></i> .....	29

# **Color**

**Decimal(15324113)**

# Conversions

## Conversions Part 1

Format	Color
Hex	E9D3D1
RGB	233, 211, 209
RGB Percent	91%, 83%, 82%
CMY	0.0863, 0.1725, 0.1804
CMYK	0.00, 0.09, 0.10, 0.09
HSL	5°, 35%, 87%
HSV	5°, 10%, 91%
XYZ	68.4072, 68.5156, 69.9410
YIQ	217.3500, 13.7540, 4.0420

# Conversions

## Conversions Part 2

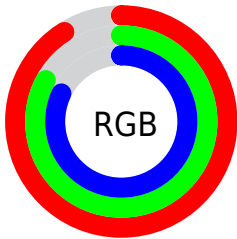
Format	Color
R <sub>Y</sub> B	233, 211, 209
Decimal	15324113
CIE Lab	86.26, 7.29, 3.75
CIE LCh	86, 8.199, 27.226
Yxy	68.5156, 0.3307, 0.3312
Android (android.graphics.Color)	4293514193 (0xFFE9D3D1)
YUV	217.3500, -4.1165, 13.7251
Hunter-Lab	82.7742, 2.6632, 7.8441

# Details

The Decimal color **15324113** is a light color, and the websafe version is hex **CCCCCC**. A complement of this color would be **13756393**, and the grayscale version is **14277081**.

A 20% lighter version of the original color is **16777215**, and **11639963** is the 20% darker color. If you saturate the color by 10%, you get **15318714**, and if you desaturate by 10%, it is **15329512**.

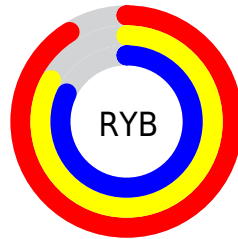
# Distribution



Red (91%)

Green (83%)

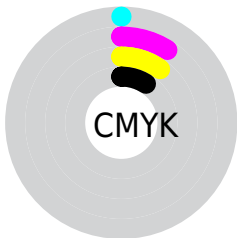
Blue (82%)



Red (91%)

Yellow (83%)

Blue (82%)

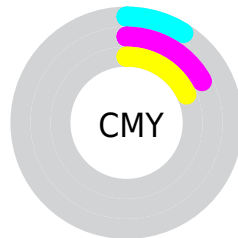


Cyan (0%)

Magenta (9%)

Yellow (10%)

Black (9%)



Cyan (9%)

Magenta (17%)

Yellow (18%)

# Brightness & Saturation Gradients

These gradients show how the Decimal color 15324113 changes by changing the brightness by 10 percent. The first figure shows a shift by +10% for each color and the second figure -10%.

Similar to the brightness gradients but the following saturation gradients show a change of the Decimal color 15324113 by changing the saturation by 10% instead.



■ 15324113

16777215

■ 15324113

■ 13481909

■ 11639963

■ 9863809

■ 8153448

■ 6508880

■ 4930105

■ 3417123

■ 2035726

■ 0

 15324113

 15324113

 15318714

 15329512

 15313058

 15335167

 15307659

 15335423

 15302260

 15296605

 15291205

 15285550

 15280151

 15274752

# Harmonies

## Analogous

The Analogous color harmony consists of three colors that are next to each other on the color wheel.



15193049



15324113



15128011

# Triad

The Triadic color harmony groups three colors that are evenly spaced from another and form a triangle on the color wheel.



15324113



13556943



13621735

# Complementary

The Complementary color scheme is a pair of colors which are on the opposite of each other on the color wheel.



15324113



13756393

# Split Complementary

Split-complementary colors differ from the complementary color scheme. The scheme consists of three colors, the original color and two neighbors of the complement color.



13163493



15324113



13098455

# Square

The Square scheme is like the rectangle color scheme, but the four colors are evenly spaced on the color wheel.



15324113



14146250



12967135



14276326

# Rectangle

The Rectangle color scheme consists of four colors that form a rectangle on the color wheel.



15324113



14866121



12967135



13425127



# Sweetspot

The Sweet Spot groups the original color and five complimentary colors.



15324113



16775415



15323623



8420218



0



8421504

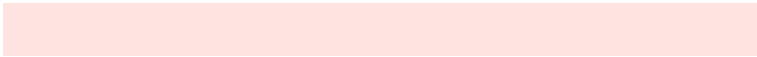


# Same Dimension

The Same Dimension uses a secret algorithm to generate beautiful new colors.



15324113



16770016



15327185



7695210



11865856



3539968

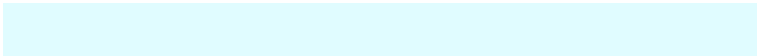


# Inverse Universe

The Inverse Universe completely reimagines the original color for something new.



13756393



14744831



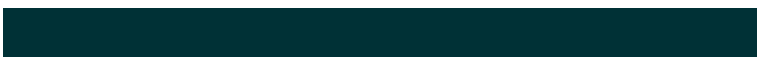
13753321



6976629



42677

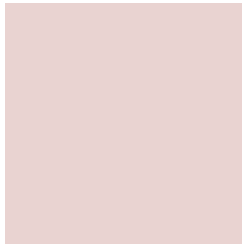


12598



# Previews

## White Background



This preview shows how the Decimal color 15324113 looks on a white background.

## Color Contrast Check

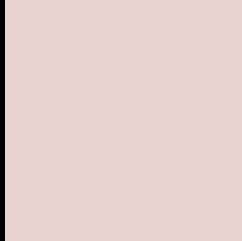
Large Text (above 18pt) WCAG AA × Fail

Any Text WCAG AA × Fail

Large Text (above 18pt) WCAG AAA × Fail

Any Text WCAG AAA × Fail

# Black Background



This preview shows how the Decimal color 15324113 looks on a black background.

## Color Contrast Check

Large Text (above 18pt) WCAG AA ✓ Pass

Any Text WCAG AA ✓ Pass

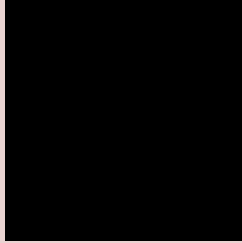
Large Text (above 18pt) WCAG AAA ✓ Pass

Any Text WCAG AAA ✓ Pass

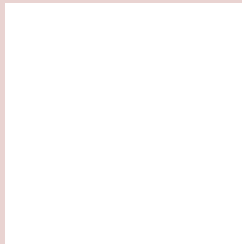
If you want to check with other color combinations, try the [Color Contrast Checker](#).



## Decimal 15324113 Background



This preview shows how black text looks on a background with the Decimal color 15324113.




This preview shows how white text looks on a background with the Decimal color 15324113.

# Color Blindness Simulation

Color vision deficiency is a very complex topic, and I could not describe the different causes any better than Wikipedia does, so if you want to learn more, you should check out their [article about color blindness](#).

## Dichromacy





**Tritanopia**  
15454689

# Trichromacy



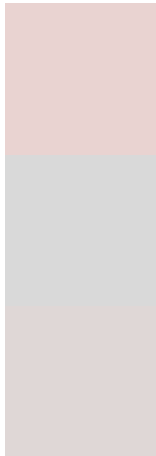
**Original Color**  
15324113

**Protanomaly**  
14800594

**Deuteranomaly**  
15586001

**Tritanomaly**  
15389403

# Monochromacy



**Original Color**  
15324113

**Achromatopsia**  
14277081

**Achromatomaly**  
14669782

# CSS Examples

## Text

The CSS property to change the color of the text to Decimal 15324113 is called "color". The color property can be set on classes, ids or directly on the HTML element.

This example shows how text in the color #E9D3D1 looks like.

```
.text, #text, p{  
    color:#E9D3D1  
}
```

If you want to add a text shadow in that color use the text-shadow property, you can generate a text shadow directly with our [CSS Text Shadow Generator](#).

Here you see how black text with a 4 pixel #E9D3D1 colored shadow looks like.

```
.shadow{ text-shadow: 4px 4px 2px #E9D3D1
}
```

## Border

The CSS property to change the border of an element to Decimal 15324113 is called "border". The border property can be set on classes, ids or directly on the HTML element.

This example shows the color as border, it can be applied via the CSS property "border" or "border-color".

```
.border, #border, table{ border:4px solid
#E9D3D1 }
```

If only the border color should be changed use the property `border-color`.

```
.border{ border-color:#E9D3D1 }
```

If you want to add a box shadow in that color use:

Here you see how a box with a 4 pixel #E9D3D1 colored shadow looks like.

```
.boxshadow{ -moz-box-shadow:4px 4px 4px  
4px #E9D3D1; -webkit-box-shadow:4px 4px  
4px 4px #E9D3D1; box-shadow:4px 4px 4px  
4px #E9D3D1 }
```

# Background

The CSS property to change the background color of an element to Decimal 15324113 is called "background". The background property can be set on classes, ids or directly on the HTML element.

```
.background, #background, body{  
background:#E9D3D1 }
```

If only the background color should be changed can be used:

```
.background{ background-color:#E9D3D1 }
```

This example shows the color as background, it is applied via the CSS property "background".

To optimize and compress your CSS code, you can use our [online CSS compressor and optimizer](#) based on csstidy. If you want to create a linear or radial gradient as background or border, check our [CSS Gradient Generator](#).



Hey! You found this booklet interesting? Support Converting Colors with the new Membership Option!

The pro membership hides all ads, plus gives you double the colors in the color bucket, and more awesome pro features!

**[Learn more, Memberships starting at \\$2.50/m!](#)**

**Follow me  
on Twitter!**

@ConvertingColor