

Converting Colors

Decimal(15349343)

Have a look what the booklet for
Decimal(15349343) contains.

Decimal(15349343)	3
<i>Conversions</i>	4
<i>Details</i>	6
<i>Harmonies</i>	11
<i>Previews</i>	23
<i>Color Blindness Simulation</i>	26
<i>CSS Examples</i>	29

Color

Decimal(15349343)

Conversions

Conversions Part 1

Format	Color
Hex	EA365F
RGB	234, 54, 95
RGB Percent	92%, 21%, 37%
CMY	0.0824, 0.7882, 0.6275
CMYK	0.00, 0.77, 0.59, 0.08
HSL	346°, 81%, 56%
HSV	346°, 77%, 92%
XYZ	37.3164, 20.9570, 12.9048
YIQ	112.4940, 94.1190, 50.9110

Conversions

Conversions Part 2

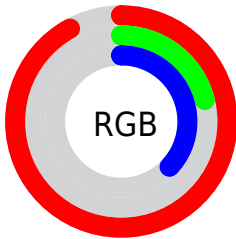
Format	Color
R_{YB}	234, 54, 95
Decimal	15349343
CIE _{Lab}	52.90, 69.13, 20.56
CIE _{LCh}	53, 72.119, 16.561
Yxy	20.9570, 0.5243, 0.2944
Android (android.graphics.Color)	4293539423 (0xFFEA365F)
YUV	112.4940, -8.6245, 106.5608
Hunter-Lab	45.7788, 65.3907, 15.3316

Details

The Decimal color **15349343** is a dark color, and the websafe version is hex **FF3366**. The color can be described as dark washed red. A complement of this color would be **3599041**, and the grayscale version is **7434609**.

A 20% lighter version of the original color is **16741521**, and **11206705** is the 20% darker color. If you saturate the color by 10%, you get **15343437**, and if you desaturate by 10%, it is **15355249**.

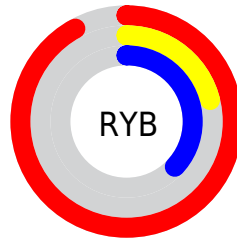
Distribution



Red (92%)

Green (21%)

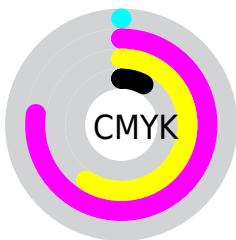
Blue (37%)



Red (92%)

Yellow (21%)

Blue (37%)

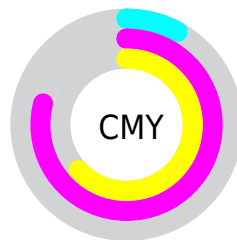


Cyan (0%)

Magenta (77%)

Yellow (59%)

Black (8%)



Cyan (8%)

Magenta (79%)

Yellow (63%)

Brightness & Saturation Gradients

These gradients show how the Decimal color 15349343 changes by changing the brightness by 10 percent. The first figure shows a shift by +10% for each color and the second figure -10%.

Similar to the brightness gradients but the following saturation gradients show a change of the Decimal color 15349343 by changing the saturation by 10% instead.

 15349343

 15349343

16777215

 13238600

 16741521

 11206705

 16749228

 9175069

 16756679

 7208964

 16764131

 5242883

 16771839

 3211266

 0

 15349343

 15349343

 15343437

 15355249

 15337275

 15361411

 15335477

 15367317

 15373479

 15379385

 15385291

 15391453

 15397360

 15400959

Harmonies

Analogous

The Analogous color harmony consists of three colors that are next to each other on the color wheel.



14563997



15349343



14177315

Triad

The Triadic color harmony groups three colors that are evenly spaced from another and form a triangle on the color wheel.



15349343



2265627



36600

Complementary

The Complementary color scheme is a pair of colors which are on the opposite of each other on the color wheel.



15349343



3599041

Split Complementary

Split-complementary colors differ from the complementary color scheme. The scheme consists of three colors, the original color and two neighbors of the complement color.



38872



15349343



39007

Square

The Square scheme is like the rectangle color scheme, but the four colors are evenly spaced on the color wheel.



15349343



7964160



39584



2325238

Rectangle

The Rectangle color scheme consists of four colors that form a rectangle on the color wheel.



15349343



12544000



39584



37617

Sweetspot

The Sweet Spot groups the original color and five complimentary colors.



15349343



16762066



12596970



8412260



0



8421504

Same Dimension

The Same Dimension uses a secret algorithm to generate beautiful new colors.



15349343



16716874



15361590



7694956



11862057



3538956

Inverse Universe

The Inverse Universe completely reimagines the original color for something new.



15349343



16716874



3586794



7694956



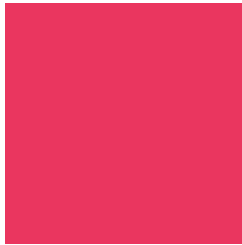
11862057



3538956

Previews

White Background



This preview shows how the Decimal color 15349343 looks on a white background.

Color Contrast Check

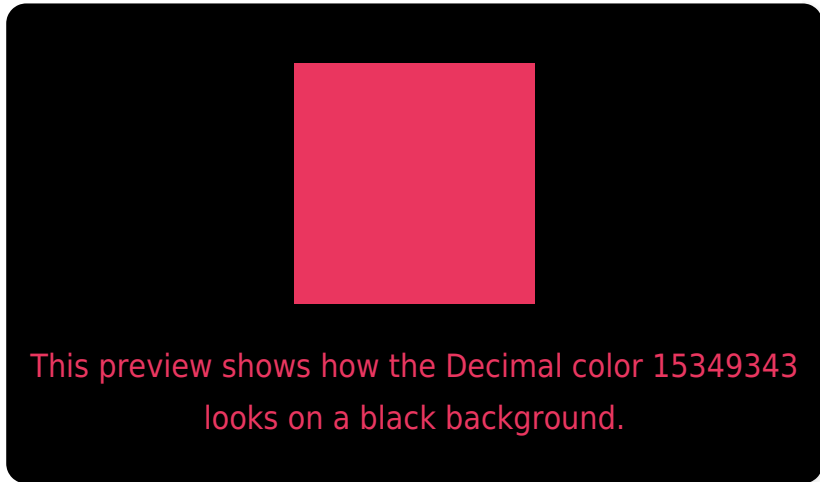
Large Text (above 18pt) WCAG AA ✓ Pass

Any Text WCAG AA × Fail

Large Text (above 18pt) WCAG AAA × Fail

Any Text WCAG AAA × Fail

Black Background



Color Contrast Check

Large Text (above 18pt) WCAG AA ✓ Pass

Any Text WCAG AA ✓ Pass

Large Text (above 18pt) WCAG AAA ✓ Pass

Any Text WCAG AAA × Fail

If you want to check with other color combinations, try the [Color Contrast Checker](#).

Decimal 15349343 Background



This preview shows how black text looks on a background with the Decimal color 15349343.

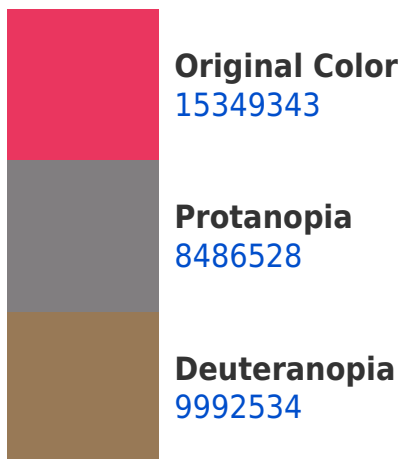


This preview shows how white text looks on a background with the Decimal color 15349343.

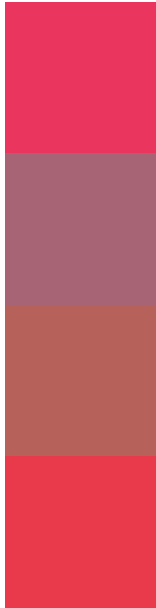
Color Blindness Simulation

Color vision deficiency is a very complex topic, and I could not describe the different causes any better than Wikipedia does, so if you want to learn more, you should check out their [article about color blindness](#).

Dichromacy



Trichromacy



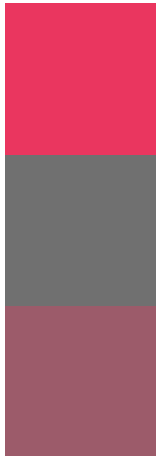
Original Color
15349343

Protanomaly
10970228

Deuteranomaly
11952473

Tritanomaly
15284811

Monochromacy



Original Color
15349343

Achromatopsia
7368816

Achromatomaly
10247018

CSS Examples

Text

The CSS property to change the color of the text to Decimal 15349343 is called "color". The color property can be set on classes, ids or directly on the HTML element.

This example shows how text in the color #EA365F looks like.

```
.text, #text, p{  
    color:#EA365F  
}
```

If you want to add a text shadow in that color use the text-shadow property, you can generate a text shadow directly with our [CSS Text Shadow Generator](#).

Here you see how black text with a 4 pixel #EA365F colored shadow looks like.

```
.shadow{ text-shadow: 4px 4px 2px #EA365F
}
```

Border

The CSS property to change the border of an element to Decimal 15349343 is called "border". The border property can be set on classes, ids or directly on the HTML element.

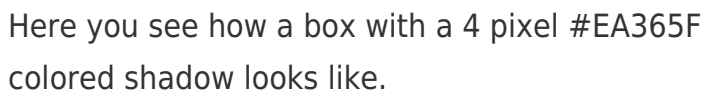
This example shows the color as border, it can be applied via the CSS property "border" or "border-color".

```
.border, #border, table{ border:4px solid
#EA365F }
```

If only the border color should be changed use the property `border-color`.

```
.border{ border-color:#EA365F }
```

If you want to add a box shadow in that color use:



Here you see how a box with a 4 pixel #EA365F colored shadow looks like.

```
.boxshadow{ -moz-box-shadow:4px 4px 4px  
4px #EA365F; -webkit-box-shadow:4px 4px  
4px 4px #EA365F; box-shadow:4px 4px 4px  
4px #EA365F }
```

Background

The CSS property to change the background color of an element to Decimal 15349343 is called "background". The background property can be set on classes, ids or directly on the HTML element.

```
.background, #background, body{  
background:#EA365F }
```

If only the background color should be changed can be used:

```
.background{ background-color:#EA365F }
```

This example shows the color as background, it is applied via the CSS property "background".

To optimize and compress your CSS code, you can use our [online CSS compressor and optimizer](#) based on csstidy. If you want to create a linear or radial gradient as background or border, check our [CSS Gradient Generator](#).

Hey! You found this booklet interesting? Support Converting Colors with the new Membership Option!

The pro membership hides all ads, plus gives you double the colors in the color bucket, and more awesome pro features!

[Learn more, Memberships starting at \\$2.50/m!](#)

**Follow me
on Twitter!**

@ConvertingColor