

Converting Colors

Decimal(15353993)

Have a look what the booklet for
Decimal(15353993) contains.

Decimal(15353993)	3
<i>Conversions</i>	4
<i>Details</i>	6
<i>Harmonies</i>	11
<i>Previews</i>	23
<i>Color Blindness Simulation</i>	26
<i>CSS Examples</i>	29

Color

Decimal(15353993)

Conversions

Conversions Part 1

Format	Color
Hex	EA4889
RGB	234, 72, 137
RGB Percent	92%, 28%, 54%
CMY	0.0824, 0.7176, 0.4627
CMYK	0.00, 0.69, 0.41, 0.08
HSL	336°, 79%, 60%
HSV	336°, 69%, 92%
XYZ	40.7644, 23.9333, 26.1380
YIQ	127.8480, 75.6870, 54.5590

Conversions

Conversions Part 2

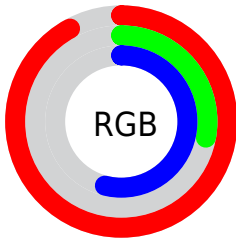
Format	Color
RYB	234, 72, 137
Decimal	15353993
CIELab	56.02, 66.63, -0.12
CIElCh	56, 66.631, 359.893
Yxy	23.9333, 0.4488, 0.2635
Android (android.graphics.Color)	4293544073 (0xFFEA4889)
YUV	127.8480, 4.5119, 93.0953
Hunter-Lab	48.9217, 63.1238, 2.5676

Details

The Decimal color **15353993** is a dark color, and the websafe version is hex **FF6699**. The color can be described as middle muted rose. A complement of this color would be **4778665**, and the grayscale version is **8421504**.

A 20% lighter version of the original color is **16745406**, and **11337815** is the 20% darker color. If you saturate the color by 10%, you get **15348091**, and if you desaturate by 10%, it is **15359895**.

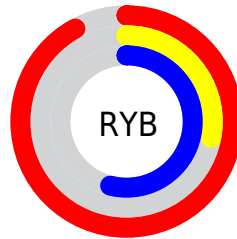
Distribution



Red (92%)

Green (28%)

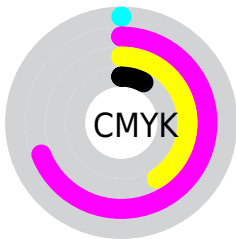
Blue (54%)



Red (92%)

Yellow (28%)

Blue (54%)

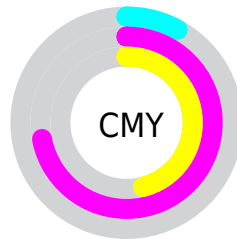


Cyan (0%)

Magenta (69%)

Yellow (41%)

Black (8%)



Cyan (8%)

Magenta (72%)

Yellow (46%)

Brightness & Saturation Gradients

These gradients show how the Decimal color 15353993 changes by changing the brightness by 10 percent. The first figure shows a shift by +10% for each color and the second figure -10%.

Similar to the brightness gradients but the following saturation gradients show a change of the Decimal color 15353993 by changing the saturation by 10% instead.

 15353993

 15353993

16777215

 13313648

 16745406

 11337815

 16752858

 9371712

 16760310

 7471147

 16767743

 5570582

 16775423

 3735554

 1048576

 0

 15353993

 15353993

 15348091

 15359895

 15341933

 15366053

 15336031

 15371955

 15335518

 15378113

 15384015

 15389917

 15396075

 15400953

 15400959

Harmonies

Analogous

The Analogous color harmony consists of three colors that are next to each other on the color wheel.



13327297



15353993



15290960

Triad

The Triadic color harmony groups three colors that are evenly spaced from another and form a triangle on the color wheel.



15353993



6853384



39914

Complementary

The Complementary color scheme is a pair of colors which are on the opposite of each other on the color wheel.



15353993



4778665

Split Complementary

Split-complementary colors differ from the complementary color scheme. The scheme consists of three colors, the original color and two neighbors of the complement color.



41151



15353993



40008

Square

The Square scheme is like the rectangle color scheme, but the four colors are evenly spaced on the color wheel.



15353993



10585088



41092



36347

Rectangle

The Rectangle color scheme consists of four colors that form a rectangle on the color wheel.



15353993



14246701



41092



40414

Sweetspot

The Sweet Spot groups the original color and five complimentary colors.



15353993



16763359



10897642



8413292



0



8421504

Same Dimension

The Same Dimension uses a secret algorithm to generate beautiful new colors.



15353993



16722816



15357512



7694958



11862089



3538965

Inverse Universe

The Inverse Universe completely reimagines the original color for something new.



15353993



16722816



4775402



7694958



11862089



3538965

Previews

White Background



This preview shows how the Decimal color 15353993 looks on a white background.

Color Contrast Check

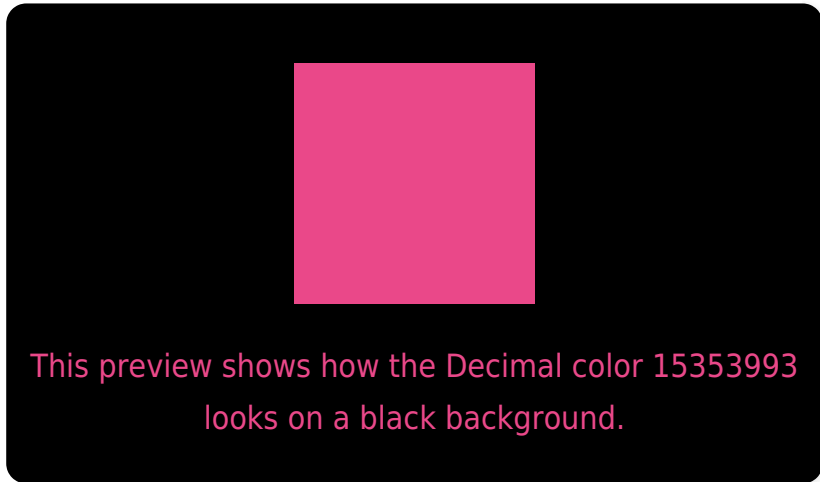
Large Text (above 18pt) WCAG AA ✓ Pass

Any Text WCAG AA × Fail

Large Text (above 18pt) WCAG AAA × Fail

Any Text WCAG AAA × Fail

Black Background



Color Contrast Check

Large Text (above 18pt) WCAG AA ✓ Pass

Any Text WCAG AA ✓ Pass

Large Text (above 18pt) WCAG AAA ✓ Pass

Any Text WCAG AAA × Fail

If you want to check with other color combinations, try the [Color Contrast Checker](#).

Decimal 15353993 Background



This preview shows how black text looks on a background with the Decimal color 15353993.



This preview shows how white text looks on a background with the Decimal color 15353993.

Color Blindness Simulation

Color vision deficiency is a very complex topic, and I could not describe the different causes any better than Wikipedia does, so if you want to learn more, you should check out their [article about color blindness](#).

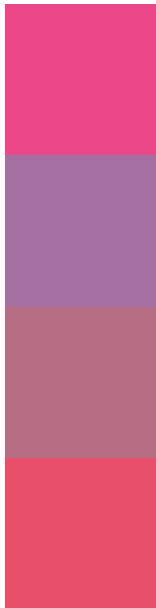
Dichromacy





Tritanopia
15160152

Trichromacy



Original Color
15353993

Protanomaly
10776481

Deuteranomaly
11890052

Tritanomaly
15224682

Monochromacy



Original Color
15353993

Achromatopsia
8421504

Achromatomaly
10972291

CSS Examples

Text

The CSS property to change the color of the text to Decimal 15353993 is called "color". The color property can be set on classes, ids or directly on the HTML element.

This example shows how text in the color #EA4889 looks like.

```
.text, #text, p{  
    color:#EA4889  
}
```

If you want to add a text shadow in that color use the text-shadow property, you can generate a text shadow directly with our [CSS Text Shadow Generator](#).

Here you see how black text with a 4 pixel #EA4889 colored shadow looks like.

```
.shadow{ text-shadow: 4px 4px 2px #EA4889
}
```

Border

The CSS property to change the border of an element to Decimal 15353993 is called "border". The border property can be set on classes, ids or directly on the HTML element.

This example shows the color as border, it can be applied via the CSS property "border" or "border-color".

```
.border, #border, table{ border:4px solid
#EA4889 }
```

If only the border color should be changed use the property `border-color`.

```
.border{ border-color:#EA4889 }
```

If you want to add a box shadow in that color use:

Here you see how a box with a 4 pixel #EA4889 colored shadow looks like.

```
.boxshadow{ -moz-box-shadow:4px 4px 4px  
4px #EA4889; -webkit-box-shadow:4px 4px  
4px 4px #EA4889; box-shadow:4px 4px 4px  
4px #EA4889 }
```

Background

The CSS property to change the background color of an element to Decimal 15353993 is called "background". The background property can be set on classes, ids or directly on the HTML element.

```
.background, #background, body{  
background:#EA4889 }
```

If only the background color should be changed can be used:

```
.background{ background-color:#EA4889 }
```

This example shows the color as background, it is applied via the CSS property "background".

To optimize and compress your CSS code, you can use our [online CSS compressor and optimizer](#) based on csstidy. If you want to create a linear or radial gradient as background or border, check our [CSS Gradient Generator](#).

Hey! You found this booklet interesting? Support Converting Colors with the new Membership Option!

The pro membership hides all ads, plus gives you double the colors in the color bucket, and more awesome pro features!

[Learn more, Memberships starting at \\$2.50/m!](#)

**Follow me
on Twitter!**

@ConvertingColor