

Converting Colors

Decimal(15362694)

Have a look what the booklet for
Decimal(15362694) contains.

Decimal(15362694)	3
<i>Conversions</i>	4
<i>Details</i>	6
<i>Harmonies</i>	11
<i>Previews</i>	23
<i>Color Blindness Simulation</i>	26
<i>CSS Examples</i>	29

Color

Decimal(15362694)

Conversions

Conversions Part 1

Format	Color
Hex	EA6A86
RGB	234, 106, 134
RGB Percent	92%, 42%, 53%
CMY	0.0824, 0.5843, 0.4745
CMYK	0.00, 0.55, 0.43, 0.08
HSL	347°, 75%, 67%
HSV	347°, 55%, 92%
XYZ	43.3888, 29.5217, 25.9657
YIQ	147.4640, 67.3000, 35.8440

Conversions

Conversions Part 2

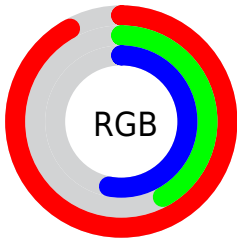
Format	Color
RYB	234, 106, 134
Decimal	15362694
CIELab	61.24, 52.06, 9.15
CIElCh	61, 52.859, 9.964
Yxy	29.5217, 0.4388, 0.2986
Android (android.graphics.Color)	4293552774 (0xFFEA6A86)
YUV	147.4640, -6.6378, 75.8921
Hunter-Lab	54.3339, 47.4584, 9.6996

Details

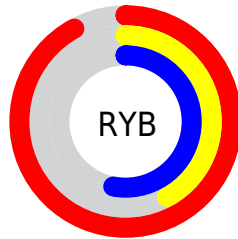
The Decimal color **15362694** is a light color, and the websafe version is hex **FF6699**. A complement of this color would be **7006926**, and the grayscale version is **9671571**.

A 20% lighter version of the original color is **16753083**, and **11416405** is the 20% darker color. If you saturate the color by 10%, you get **15356788**, and if you desaturate by 10%, it is **15368600**.

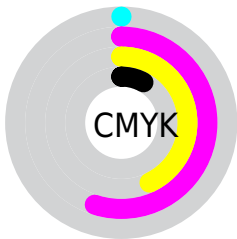
Distribution



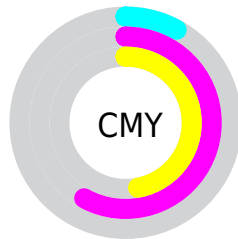
- Red (92%)
- Green (42%)
- Blue (53%)



- Red (92%)
- Yellow (42%)
- Blue (53%)



- Cyan (0%)
- Magenta (55%)
- Yellow (43%)
- Black (8%)



- Cyan (8%)
- Magenta (58%)
- Yellow (47%)

Brightness & Saturation Gradients

These gradients show how the Decimal color 15362694 changes by changing the brightness by 10 percent. The first figure shows a shift by +10% for each color and the second figure -10%.

Similar to the brightness gradients but the following saturation gradients show a change of the Decimal color 15362694 by changing the saturation by 10% instead.

 15362694  15362694

16777215  13389677

 16753083  11416405

 16760279  9507134

 16767731  7602216

 16775167  5767188

 4063234

 1835009

 0

 15362694  15362694

 15356788

 15368600

 15350625

 15374763

 15344719

 15380669

 15338557

 15386831

 15335475

 15392737

 15398644

 15400959

Harmonies

Analogous

The Analogous color harmony consists of three colors that are next to each other on the color wheel.



14250165



15362694



14840922

Triad

The Triadic color harmony groups three colors that are evenly spaced from another and form a triangle on the color wheel.



15362694



7119432



41451

Complementary

The Complementary color scheme is a pair of colors which are on the opposite of each other on the color wheel.



15362694



7006926

Split Complementary

Split-complementary colors differ from the complementary color scheme. The scheme consists of three colors, the original color and two neighbors of the complement color.



43471



15362694



698738

Square

The Square scheme is like the rectangle color scheme, but the four colors are evenly spaced on the color wheel.



15362694



10458673



43939



5936368

Rectangle

The Rectangle color scheme consists of four colors that form a rectangle on the color wheel.



15362694



13795395



43939



42468

Sweetspot

The Sweet Spot groups the original color and five complimentary colors.



15362694



16766687



13396714



8415085



0



8421504

Same Dimension

The Same Dimension uses a secret algorithm to generate beautiful new colors.



15362694



16734076



15371370



7694956



11862056



3538956

Inverse Universe

The Inverse Universe completely reimagines the original color for something new.



15362694



16734076



6998250



7694956



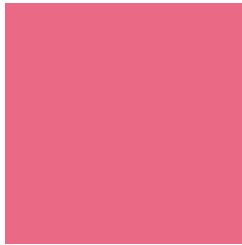
11862056



3538956

Previews

White Background



This preview shows how the Decimal color 15362694 looks on a white background.

Color Contrast Check

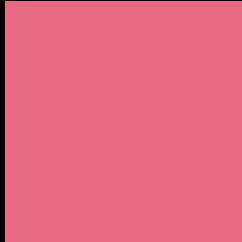
Large Text (above 18pt) WCAG AA ✓ Pass

Any Text WCAG AA × Fail

Large Text (above 18pt) WCAG AAA × Fail

Any Text WCAG AAA × Fail

Black Background



This preview shows how the Decimal color 15362694 looks on a black background.

Color Contrast Check

Large Text (above 18pt) WCAG AA ✓ Pass

Any Text WCAG AA ✓ Pass

Large Text (above 18pt) WCAG AAA ✓ Pass

Any Text WCAG AAA × Fail

If you want to check with other color combinations, try the [Color Contrast Checker](#).

Decimal 15362694 Background



This preview shows how black text looks on a background with the Decimal color 15362694.



This preview shows how white text looks on a background with the Decimal color 15362694.

Color Blindness Simulation

Color vision deficiency is a very complex topic, and I could not describe the different causes any better than Wikipedia does, so if you want to learn more, you should check out their [article about color blindness](#).

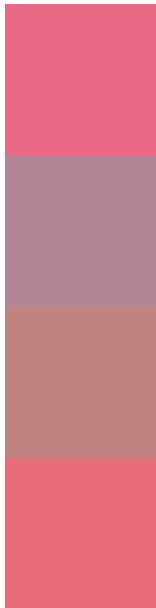
Dichromacy





Tritanopia
15297909

Trichromacy



Original Color
15362694

Protanomaly
11764885

Deuteranomaly
12681858

Tritanomaly
15297659

Monochromacy



Original Color
15362694

Achromatopsia
9671571

Achromatomaly
11764878

CSS Examples

Text

The CSS property to change the color of the text to Decimal 15362694 is called "color". The color property can be set on classes, ids or directly on the HTML element.

This example shows how text in the color #EA6A86 looks like.

```
.text, #text, p{  
    color:#EA6A86  
}
```

If you want to add a text shadow in that color use the text-shadow property, you can generate a text shadow directly with our [CSS Text Shadow Generator](#).

Here you see how black text with a 4 pixel #EA6A86 colored shadow looks like.

```
.shadow{ text-shadow: 4px 4px 2px #EA6A86
}
```

Border

The CSS property to change the border of an element to Decimal 15362694 is called "border". The border property can be set on classes, ids or directly on the HTML element.

This example shows the color as border, it can be applied via the CSS property "border" or "border-color".

```
.border, #border, table{ border:4px solid
#EA6A86 }
```

If only the border color should be changed use the property `border-color`.

```
.border{ border-color:#EA6A86 }
```

If you want to add a box shadow in that color use:

Here you see how a box with a 4 pixel #EA6A86 colored shadow looks like.

```
.boxshadow{ -moz-box-shadow:4px 4px 4px  
4px #EA6A86; -webkit-box-shadow:4px 4px  
4px 4px #EA6A86; box-shadow:4px 4px 4px  
4px #EA6A86 }
```

Background

The CSS property to change the background color of an element to Decimal 15362694 is called "background". The background property can be set on classes, ids or directly on the HTML element.

```
.background, #background, body{  
background:#EA6A86 }
```

If only the background color should be changed can be used:

```
.background{ background-color:#EA6A86 }
```

This example shows the color as background, it is applied via the CSS property "background".

To optimize and compress your CSS code, you can use our [online CSS compressor and optimizer](#) based on csstidy. If you want to create a linear or radial gradient as background or border, check our [CSS Gradient Generator](#).

Hey! You found this booklet interesting? Support Converting Colors with the new Membership Option!

The pro membership hides all ads, plus gives you double the colors in the color bucket, and more awesome pro features!

[Learn more, Memberships starting at \\$2.50/m!](#)

**Follow me
on Twitter!**

@ConvertingColor