

Converting Colors

Decimal(15362948)

Have a look what the booklet for
Decimal(15362948) contains.

Decimal(15362948)	3
<i>Conversions</i>	4
<i>Details</i>	6
<i>Harmonies</i>	11
<i>Previews</i>	23
<i>Color Blindness Simulation</i>	26
<i>CSS Examples</i>	29

Color

Decimal(15362948)

Conversions

Conversions Part 1

Format	Color
Hex	EA6B84
RGB	234, 107, 132
RGB Percent	92%, 42%, 52%
CMY	0.0824, 0.5804, 0.4824
CMYK	0.00, 0.54, 0.44, 0.08
HSL	348°, 75%, 67%
HSV	348°, 54%, 92%
XYZ	43.3542, 29.6738, 25.2724
YIQ	147.8230, 67.6670, 34.6990

Conversions

Conversions Part 2

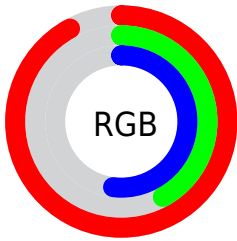
Format	Color
RYB	234, 107, 132
Decimal	15362948
CIELab	61.37, 51.39, 10.49
CIElCh	61, 52.449, 11.535
Yxy	29.6738, 0.4410, 0.3019
Android (android.graphics.Color)	4293553028 (0xFFEA6B84)
YUV	147.8230, -7.8007, 75.5772
Hunter-Lab	54.4736, 46.7350, 10.6247

Details

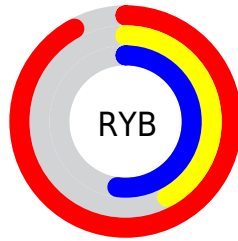
The Decimal color **15362948** is a light color, and the websafe version is hex **FF6699**. A complement of this color would be **7072465**, and the grayscale version is **9737364**.

A 20% lighter version of the original color is **16753337**, and **11416659** is the 20% darker color. If you saturate the color by 10%, you get **15357041**, and if you desaturate by 10%, it is **15368855**.

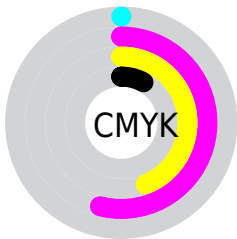
Distribution



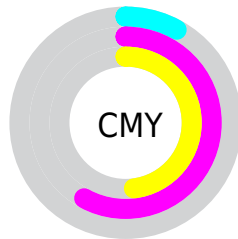
- Red (92%)
- Green (42%)
- Blue (52%)



- Red (92%)
- Yellow (42%)
- Blue (52%)



- Cyan (0%)
- Magenta (54%)
- Yellow (44%)
- Black (8%)



- Cyan (8%)
- Magenta (58%)
- Yellow (48%)

Brightness & Saturation Gradients

These gradients show how the Decimal color 15362948 changes by changing the brightness by 10 percent. The first figure shows a shift by +10% for each color and the second figure -10%.

Similar to the brightness gradients but the following saturation gradients show a change of the Decimal color 15362948 by changing the saturation by 10% instead.

 15362948

 15362948

16777215

 13389931

 16753337

 11416659

 16760533

 9507900

 16767985

 7602214

 16775423

 5701650

 3997698

 1769473

 0

 15362948

 15362948

 15357041

 15368855

 15350878

 15375018

 15344972

 15380924

 15338809

 15387087

 15335470

 15392994

 15398901

 15400959

Harmonies

Analogous

The Analogous color harmony consists of three colors that are next to each other on the color wheel.



14315699



15362948



14775897

Triad

The Triadic color harmony groups three colors that are evenly spaced from another and form a triangle on the color wheel.



15362948



6988619



41452

Complementary

The Complementary color scheme is a pair of colors which are on the opposite of each other on the color wheel.



15362948



7072465

Split Complementary

Split-complementary colors differ from the complementary color scheme. The scheme consists of three colors, the original color and two neighbors of the complement color.



43473



15362948



43381

Square

The Square scheme is like the rectangle color scheme, but the four colors are evenly spaced on the color wheel.



15362948



10327859



43941



6394863

Rectangle

The Rectangle color scheme consists of four colors that form a rectangle on the color wheel.



15362948



13664578



43941



42213

Sweetspot

The Sweet Spot groups the original color and five complimentary colors.



15362948



16766686



13724650



8415084



0



8421504

Same Dimension

The Same Dimension uses a secret algorithm to generate beautiful new colors.



15362948



16734586



15372651



7694956



11862052



3538955

Inverse Universe

The Inverse Universe completely reimagines the original color for something new.



15362948



16734586



7062762



7694956



11862052



3538955

Previews

White Background



This preview shows how the Decimal color 15362948 looks on a white background.

Color Contrast Check

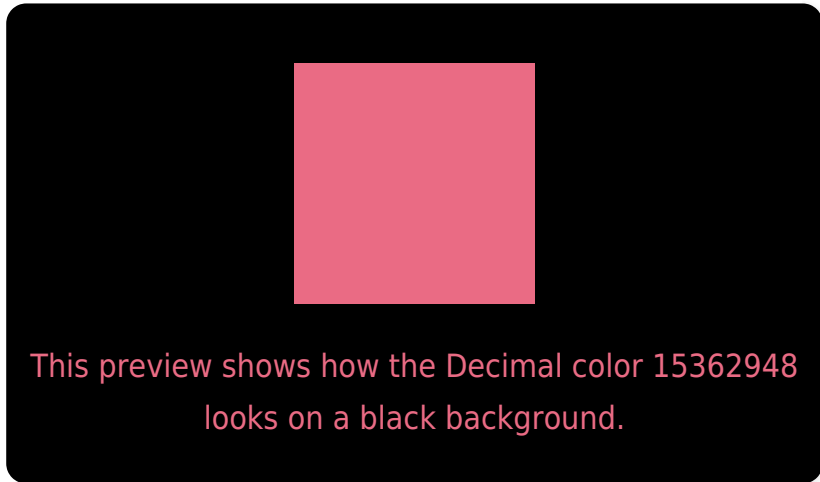
Large Text (above 18pt) WCAG AA ✓ Pass

Any Text WCAG AA ✗ Fail

Large Text (above 18pt) WCAG AAA ✗ Fail

Any Text WCAG AAA ✗ Fail

Black Background



Color Contrast Check

Large Text (above 18pt) WCAG AA ✓ Pass

Any Text WCAG AA ✓ Pass

Large Text (above 18pt) WCAG AAA ✓ Pass

Any Text WCAG AAA × Fail

If you want to check with other color combinations, try the [Color Contrast Checker](#).

Decimal 15362948 Background



This preview shows how black text looks on a background with the Decimal color 15362948.

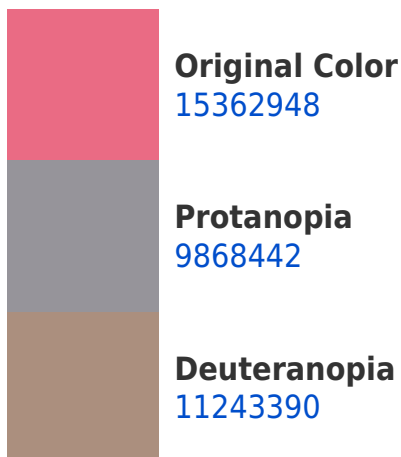



This preview shows how white text looks on a background with the Decimal color 15362948.

Color Blindness Simulation

Color vision deficiency is a very complex topic, and I could not describe the different causes any better than Wikipedia does, so if you want to learn more, you should check out their [article about color blindness](#).

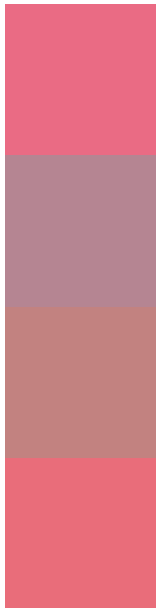
Dichromacy





Tritanopia
15298165

Trichromacy



Original Color
15362948

Protanomaly
11896210

Deuteranomaly
12747392

Tritanomaly
15297914

Monochromacy



Original Color
15362948

Achromatopsia
9737364

Achromatomaly
11765134

CSS Examples

Text

The CSS property to change the color of the text to Decimal 15362948 is called "color". The color property can be set on classes, ids or directly on the HTML element.

This example shows how text in the color #EA6B84 looks like.

```
.text, #text, p{  
    color:#EA6B84  
}
```

If you want to add a text shadow in that color use the text-shadow property, you can generate a text shadow directly with our [CSS Text Shadow Generator](#).

Here you see how black text with a 4 pixel #EA6B84 colored shadow looks like.

```
.shadow{ text-shadow: 4px 4px 2px #EA6B84
}
```

Border

The CSS property to change the border of an element to Decimal 15362948 is called "border". The border property can be set on classes, ids or directly on the HTML element.

This example shows the color as border, it can be applied via the CSS property "border" or "border-color".

```
.border, #border, table{ border:4px solid
#EA6B84 }
```

If only the border color should be changed use the property `border-color`.

```
.border{ border-color:#EA6B84 }
```

If you want to add a box shadow in that color use:

Here you see how a box with a 4 pixel #EA6B84 colored shadow looks like.

```
.boxshadow{ -moz-box-shadow:4px 4px 4px  
4px #EA6B84; -webkit-box-shadow:4px 4px  
4px 4px #EA6B84; box-shadow:4px 4px 4px  
4px #EA6B84 }
```

Background

The CSS property to change the background color of an element to Decimal 15362948 is called "background". The background property can be set on classes, ids or directly on the HTML element.

```
.background, #background, body{  
background:#EA6B84 }
```

If only the background color should be changed can be used:

```
.background{ background-color:#EA6B84 }
```

This example shows the color as background, it is applied via the CSS property "background".

To optimize and compress your CSS code, you can use our [online CSS compressor and optimizer](#) based on csstidy. If you want to create a linear or radial gradient as background or border, check our [CSS Gradient Generator](#).

Hey! You found this booklet interesting? Support Converting Colors with the new Membership Option!

The pro membership hides all ads, plus gives you double the colors in the color bucket, and more awesome pro features!

[Learn more, Memberships starting at \\$2.50/m!](#)

**Follow me
on Twitter!**

@ConvertingColor