

# Converting Colors

Decimal(15364501)

Have a look what the booklet for  
Decimal(15364501) contains.

<b>Decimal(15364501)</b> .....	3
<i><b>Conversions</b></i> .....	4
<i><b>Details</b></i> .....	6
<i><b>Harmonies</b></i> .....	11
<i><b>Previews</b></i> .....	23
<i><b>Color Blindness Simulation</b></i> .....	26
<i><b>CSS Examples</b></i> .....	29

# **Color**

**Decimal(15364501)**

# Conversions

## Conversions Part 1

Format	Color
Hex	EA7195
RGB	234, 113, 149
RGB Percent	92%, 44%, 58%
CMY	0.0824, 0.5569, 0.4157
CMYK	0.00, 0.52, 0.36, 0.08
HSL	342°, 74%, 68%
HSV	342°, 52%, 92%
XYZ	45.2616, 31.4726, 32.1230
YIQ	153.2830, 60.5600, 36.8480

# Conversions

## Conversions Part 2

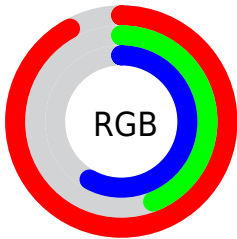
Format	Color
<a href="#">RYB</a>	<a href="#">234, 113, 149</a>
Decimal	<a href="#">15364501</a>
CIELab	<a href="#">62.90, 50.35, 2.90</a>
CIELCh	<a href="#">63, 50.429, 3.297</a>
Yxy	<a href="#">31.4726, 0.4158, 0.2891</a>
Android (android.graphics.Color)	<a href="#">4293554581</a> (0xFFEA7195)
YUV	<a href="#">153.2830, -2.1115, 70.7888</a>
Hunter-Lab	<a href="#">56.1005, 45.8373, 5.3209</a>

# Details

The Decimal color **15364501** is a light color, and the websafe version is hex **FF6699**. A complement of this color would be **7465670**, and the grayscale version is **10066329**.

A 20% lighter version of the original color is **16754891**, and **11484002** is the 20% darker color. If you saturate the color by 10%, you get **15358597**, and if you desaturate by 10%, it is **15370405**.

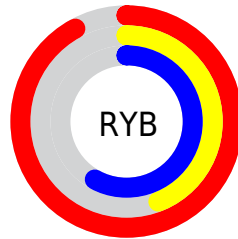
# Distribution



Red (92%)

Green (44%)

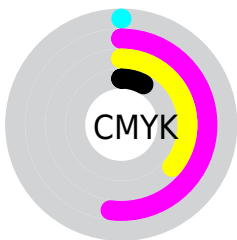
Blue (58%)



Red (92%)

Yellow (44%)

Blue (58%)

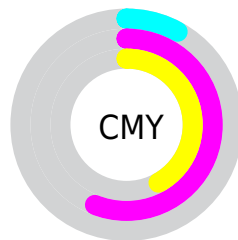


Cyan (0%)

Magenta (52%)

Yellow (36%)

Black (8%)



Cyan (8%)

Magenta (56%)

Yellow (42%)

# Brightness & Saturation Gradients

These gradients show how the Decimal color 15364501 changes by changing the brightness by 10 percent. The first figure shows a shift by +10% for each color and the second figure -10%.

Similar to the brightness gradients but the following saturation gradients show a change of the Decimal color 15364501 by changing the saturation by 10% instead.




 15364501  15364501

16777215  13391483

 16754891  11484002

 16762087  9575755

 16769535  7667764

16776959  5898271

 4194310

 2228225

 0

 15364501  15364501

15358597

15370405

15352436

15376566

15346532

15382470

15340371

15388631

15335494

15394535

15400440

15400959

# Harmonies

## Analogous

The Analogous color harmony consists of three colors that are next to each other on the color wheel.



13859265



15364501



15234921

# Triad

The Triadic color harmony groups three colors that are evenly spaced from another and form a triangle on the color wheel.



15364501



8365130



42984

# Complementary

The Complementary color scheme is a pair of colors which are on the opposite of each other on the color wheel.



15364501



7465670

# Split Complementary

Split-complementary colors differ from the complementary color scheme. The scheme consists of three colors, the original color and two neighbors of the complement color.



44488



15364501



4172654

# Square

The Square scheme is like the rectangle color scheme, but the four colors are evenly spaced on the color wheel.



15364501



11376442



44956



4955122

# Rectangle

The Rectangle color scheme consists of four colors that form a rectangle on the color wheel.



15364501



14385745



44956



43743



# Sweetspot

The Sweet Spot groups the original color and five complimentary colors.



15364501



16766690



13005290



8415086



0



8421504



# Same Dimension

The Same Dimension uses a secret algorithm to generate beautiful new colors.



15364501



16736656



15370609



7694957



11862070



3538960



# Inverse Universe

The Inverse Universe completely reimagines the original color for something new.



15364501



16736656



7459562



7694957



11862070



3538960



# Previews

## White Background



This preview shows how the Decimal color 15364501 looks on a white background.

## Color Contrast Check

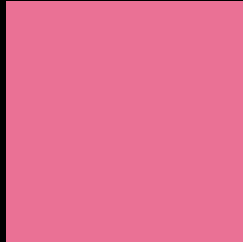
Large Text (above 18pt) WCAG AA × Fail

Any Text WCAG AA × Fail

Large Text (above 18pt) WCAG AAA × Fail

Any Text WCAG AAA × Fail

# Black Background



This preview shows how the Decimal color 15364501 looks on a black background.

## Color Contrast Check

Large Text (above 18pt) WCAG AA ✓ Pass

Any Text WCAG AA ✓ Pass

Large Text (above 18pt) WCAG AAA ✓ Pass

Any Text WCAG AAA ✓ Pass

If you want to check with other color combinations, try the [Color Contrast Checker](#).



## Decimal 15364501 Background



This preview shows how black text looks on a background with the Decimal color 15364501.




This preview shows how white text looks on a background with the Decimal color 15364501.

# Color Blindness Simulation

Color vision deficiency is a very complex topic, and I could not describe the different causes any better than Wikipedia does, so if you want to learn more, you should check out their [article about color blindness](#).

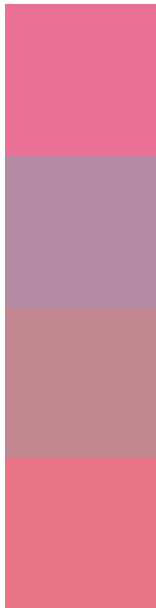
## Dichromacy





**Tritanopia**  
15234430

# Trichromacy



**Original Color**  
15364501

**Protanomaly**  
11897508

**Deuteranomaly**  
12748689

**Tritanomaly**  
15299718

# Monochromacy



**Original Color**  
15364501

**Achromatopsia**  
10066329

**Achromatomaly**  
11963032

# CSS Examples

## Text

The CSS property to change the color of the text to Decimal 15364501 is called "color". The color property can be set on classes, ids or directly on the HTML element.

This example shows how text in the color #EA7195 looks like.

```
.text, #text, p{  
    color:#EA7195  
}
```

If you want to add a text shadow in that color use the text-shadow property, you can generate a text shadow directly with our [CSS Text Shadow Generator](#).

Here you see how black text with a 4 pixel #EA7195 colored shadow looks like.

```
.shadow{ text-shadow: 4px 4px 2px #EA7195
}
```

## Border

The CSS property to change the border of an element to Decimal 15364501 is called "border". The border property can be set on classes, ids or directly on the HTML element.

This example shows the color as border, it can be applied via the CSS property "border" or "border-color".

```
.border, #border, table{ border:4px solid
#EA7195 }
```

If only the border color should be changed use the property `border-color`.

```
.border{ border-color:#EA7195 }
```

If you want to add a box shadow in that color use:

Here you see how a box with a 4 pixel #EA7195 colored shadow looks like.

```
.boxshadow{ -moz-box-shadow:4px 4px 4px  
4px #EA7195; -webkit-box-shadow:4px 4px  
4px 4px #EA7195; box-shadow:4px 4px 4px  
4px #EA7195 }
```

# Background

The CSS property to change the background color of an element to Decimal 15364501 is called "background". The background property can be set on classes, ids or directly on the HTML element.

```
.background, #background, body{  
background:#EA7195 }
```

If only the background color should be changed can be used:

```
.background{ background-color:#EA7195 }
```

This example shows the color as background, it is applied via the CSS property "background".

To optimize and compress your CSS code, you can use our [online CSS compressor and optimizer](#) based on csstidy. If you want to create a linear or radial gradient as background or border, check our [CSS Gradient Generator](#).



Hey! You found this booklet interesting? Support Converting Colors with the new Membership Option!

The pro membership hides all ads, plus gives you double the colors in the color bucket, and more awesome pro features!

**[Learn more, Memberships starting at \\$2.50/m!](#)**

**Follow me  
on Twitter!**

@ConvertingColor