

Converting Colors

Decimal(15372464)

Have a look what the booklet for
Decimal(15372464) contains.

Decimal(15372464)	3
<i>Conversions</i>	4
<i>Details</i>	6
<i>Harmonies</i>	11
<i>Previews</i>	23
<i>Color Blindness Simulation</i>	26
<i>CSS Examples</i>	29

Color

Decimal(15372464)

Conversions

Conversions Part 1

Format	Color
Hex	EA90B0
RGB	234, 144, 176
RGB Percent	92%, 56%, 69%
CMY	0.0824, 0.4353, 0.3098
CMYK	0.00, 0.38, 0.25, 0.08
HSL	339°, 68%, 74%
HSV	339°, 38%, 92%
XYZ	51.7414, 40.5735, 46.1787
YIQ	174.5580, 43.3680, 29.0320

Conversions

Conversions Part 2

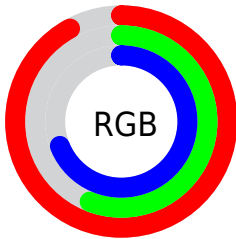
Format	Color
RYB	234, 144, 176
Decimal	15372464
CIELab	69.88, 38.10, -2.20
CIELCh	70, 38.168, 356.692
Yxy	40.5735, 0.3736, 0.2930
Android (android.graphics.Color)	4293562544 (0xFFEA90B0)
YUV	174.5580, 0.7109, 52.1306
Hunter-Lab	63.6974, 33.5253, 1.6047

Details

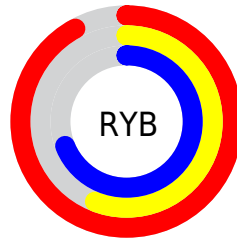
The Decimal color **15372464** is a light color, and the websafe version is hex **FF99CC**. A complement of this color would be **9497290**, and the grayscale version is **11513775**.

A 20% lighter version of the original color is **16762856**, and **11558012** is the 20% darker color. If you saturate the color by 10%, you get **15366561**, and if you desaturate by 10%, it is **15378367**.

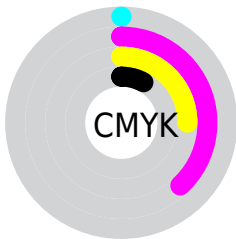
Distribution



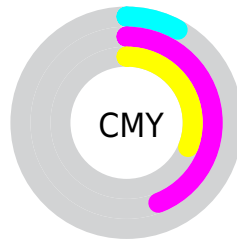
- Red (92%)
- Green (56%)
- Blue (69%)



- Red (92%)
- Yellow (56%)
- Blue (69%)



- Cyan (0%)
- Magenta (38%)
- Yellow (25%)
- Black (8%)



- Cyan (8%)
- Magenta (44%)
- Yellow (31%)

Brightness & Saturation Gradients

These gradients show how the Decimal color 15372464 changes by changing the brightness by 10 percent. The first figure shows a shift by +10% for each color and the second figure -10%.

Similar to the brightness gradients but the following saturation gradients show a change of the Decimal color 15372464 by changing the saturation by 10% instead.

 15372464

 15372464

16777215

 13465237

 16762856

 11558012

 16770047

 9716323

 7940427

 6164020

 4456479

 3145735

 0

 15372464

 15372464

 15366561

 15378367

 15360402

 15384526

 15354499

 15390429

 15348340

 15396588

 15342437

 15400955

 15336534

 15400959

 15335507

Harmonies

Analogous

The Analogous color harmony consists of three colors that are next to each other on the color wheel.



13866961



15372464



15635085

Triad

The Triadic color harmony groups three colors that are evenly spaced from another and form a triangle on the color wheel.



15372464



10662508



3193060

Complementary

The Complementary color scheme is a pair of colors which are on the opposite of each other on the color wheel.



15372464



9497290

Split Complementary

Split-complementary colors differ from the complementary color scheme. The scheme consists of three colors, the original color and two neighbors of the complement color.



1162697



15372464



7977348

Square

The Square scheme is like the rectangle color scheme, but the four colors are evenly spaced on the color wheel.



15372464



12953445



4898214



7450607

Rectangle

The Rectangle color scheme consists of four colors that form a rectangle on the color wheel.



15372464



15112314



4898214



1751772

Sweetspot

The Sweet Spot groups the original color and five complimentary colors.



15372464



16769259



13209834



8416884



0



8421504

Same Dimension

The Same Dimension uses a secret algorithm to generate beautiful new colors.



15372464



16747187



15375504



7694958



11862080



3538963

Inverse Universe

The Inverse Universe completely reimagines the original color for something new.



15372464



16747187



9494250



7694958



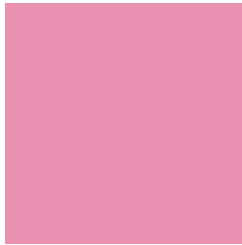
11862080



3538963

Previews

White Background



This preview shows how the Decimal color 15372464 looks on a white background.

Color Contrast Check

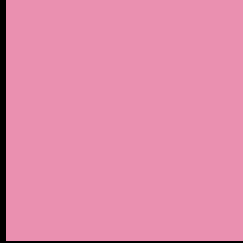
Large Text (above 18pt) WCAG AA × Fail

Any Text WCAG AA × Fail

Large Text (above 18pt) WCAG AAA × Fail

Any Text WCAG AAA × Fail

Black Background



This preview shows how the Decimal color 15372464 looks on a black background.

Color Contrast Check

Large Text (above 18pt) WCAG AA ✓ Pass

Any Text WCAG AA ✓ Pass

Large Text (above 18pt) WCAG AAA ✓ Pass

Any Text WCAG AAA ✓ Pass

If you want to check with other color combinations, try the [Color Contrast Checker](#).

Decimal 15372464 Background



This preview shows how black text looks on a background with the Decimal color 15372464.



This preview shows how white text looks on a background with the Decimal color 15372464.

Color Blindness Simulation

Color vision deficiency is a very complex topic, and I could not describe the different causes any better than Wikipedia does, so if you want to learn more, you should check out their [article about color blindness](#).

Dichromacy



Original Color
15372464

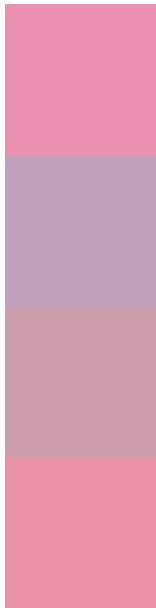
Protanopia
11053760

Deuteranopia
12297900



Tritanopia
15242142

Trichromacy



Original Color
15372464

Protanomaly
12624314

Deuteranomaly
13409965

Tritanomaly
15307429

Monochromacy



Original Color
15372464

Achromatopsia
11513775

Achromatomaly
12887215

CSS Examples

Text

The CSS property to change the color of the text to Decimal 15372464 is called "color". The color property can be set on classes, ids or directly on the HTML element.

This example shows how text in the color #EA90B0 looks like.

```
.text, #text, p{  
    color:#EA90B0  
}
```

If you want to add a text shadow in that color use the text-shadow property, you can generate a text shadow directly with our [CSS Text Shadow Generator](#).

Here you see how black text with a 4 pixel #EA90B0 colored shadow looks like.

```
.shadow{ text-shadow: 4px 4px 2px #EA90B0
}
```

Border

The CSS property to change the border of an element to Decimal 15372464 is called "border". The border property can be set on classes, ids or directly on the HTML element.

This example shows the color as border, it can be applied via the CSS property "border" or "border-color".

```
.border, #border, table{ border:4px solid
#EA90B0 }
```

If only the border color should be changed use the property `border-color`.

```
.border{ border-color:#EA90B0 }
```

If you want to add a box shadow in that color use:

Here you see how a box with a 4 pixel #EA90B0 colored shadow looks like.

```
.boxshadow{ -moz-box-shadow:4px 4px 4px  
4px #EA90B0; -webkit-box-shadow:4px 4px  
4px 4px #EA90B0; box-shadow:4px 4px 4px  
4px #EA90B0 }
```

Background

The CSS property to change the background color of an element to Decimal 15372464 is called "background". The background property can be set on classes, ids or directly on the HTML element.

```
.background, #background, body{  
background:#EA90B0 }
```

If only the background color should be changed can be used:

```
.background{ background-color:#EA90B0 }
```

This example shows the color as background, it is applied via the CSS property "background".

To optimize and compress your CSS code, you can use our [online CSS compressor and optimizer](#) based on csstidy. If you want to create a linear or radial gradient as background or border, check our [CSS Gradient Generator](#).

Hey! You found this booklet interesting? Support Converting Colors with the new Membership Option!

The pro membership hides all ads, plus gives you double the colors in the color bucket, and more awesome pro features!

[Learn more, Memberships starting at \\$2.50/m!](#)

**Follow me
on Twitter!**

@ConvertingColor