

Converting Colors

Decimal(15384504)

Have a look what the booklet for
Decimal(15384504) contains.

Decimal(15384504)	3
<i>Conversions</i>	4
<i>Details</i>	6
<i>Harmonies</i>	11
<i>Previews</i>	23
<i>Color Blindness Simulation</i>	26
<i>CSS Examples</i>	29

Color

Decimal(15384504)

Conversions

Conversions Part 1

Format	Color
Hex	EABFB8
RGB	234, 191, 184
RGB Percent	92%, 75%, 72%
CMY	0.0824, 0.2510, 0.2784
CMYK	0.00, 0.18, 0.21, 0.08
HSL	8°, 54%, 82%
HSV	8°, 21%, 92%
XYZ	61.2142, 58.2147, 53.3576
YIQ	203.0590, 27.8750, 6.9390

Conversions

Conversions Part 2

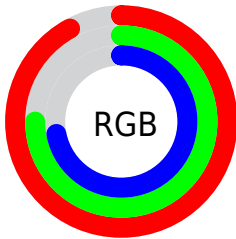
Format	Color
RYB	234, 192, 184
Decimal	15384504
CIELab	80.86, 14.30, 9.32
CIELCh	81, 17.068, 33.085
Yxy	58.2147, 0.3543, 0.3369
Android (android.graphics.Color)	4293574584 (0xFFEABFB8)
YUV	203.0590, -9.3961, 27.1353
Hunter-Lab	76.2986, 9.6877, 11.9459

Details

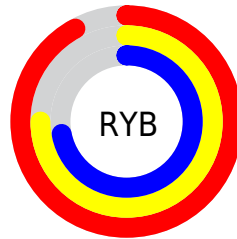
The Decimal color **15384504** is a light color, and the websafe version is hex **FFCCCC**. A complement of this color would be **12116970**, and the grayscale version is **13355979**.

A 20% lighter version of the original color is **16775152**, and **11700611** is the 20% darker color. If you saturate the color by 10%, you get **15379361**, and if you desaturate by 10%, it is **15389647**.

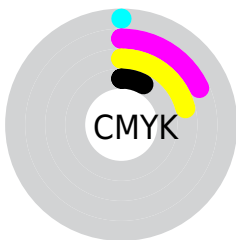
Distribution



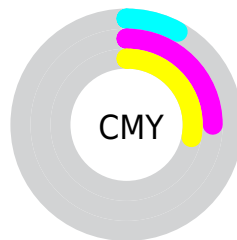
- Red (92%)
- Green (75%)
- Blue (72%)



- Red (92%)
- Yellow (75%)
- Blue (72%)



- Cyan (0%)
- Magenta (18%)
- Yellow (21%)
- Black (8%)



- Cyan (8%)
- Magenta (25%)
- Yellow (28%)

Brightness & Saturation Gradients

These gradients show how the Decimal color 15384504 changes by changing the brightness by 10 percent. The first figure shows a shift by +10% for each color and the second figure -10%.

Similar to the brightness gradients but the following saturation gradients show a change of the Decimal color 15384504 by changing the saturation by 10% instead.

15384504

15384504

16777215

13477021

16775152

11700611

9859178

8148818

6438971

4860453

3282192

1966080

0

 15384504

 15384504

 15379361

 15389647

 15374217

 15394791

 15369074

 15399934

 15363930

 15400959

 15358531

 15353388

 15348244

 15343872

Harmonies

Analogous

The Analogous color harmony consists of three colors that are next to each other on the color wheel.



15318728



15384504



14861229

Triad

The Triadic color harmony groups three colors that are evenly spaced from another and form a triangle on the color wheel.



15384504



11588026



12176104

Complementary

The Complementary color scheme is a pair of colors which are on the opposite of each other on the color wheel.



15384504



12116970

Split Complementary

Split-complementary colors differ from the complementary color scheme. The scheme consists of three colors, the original color and two neighbors of the complement color.



11063013



15384504



10736330

Square

The Square scheme is like the rectangle color scheme, but the four colors are evenly spaced on the color wheel.



15384504



12766638



10473946



13550819

Rectangle

The Rectangle color scheme consists of four colors that form a rectangle on the color wheel.



15384504



14272169



10473946



11783144

Sweetspot

The Sweet Spot groups the original color and five complimentary colors.



15384504



16773872



15382755



8419447



0



8421504

Same Dimension

The Same Dimension uses a secret algorithm to generate beautiful new colors.



15384504



16762557



15390904



7695210



11868416



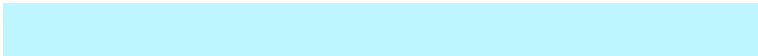
3540736

Inverse Universe

The Inverse Universe completely reimagines the original color for something new.



12116970



12449535



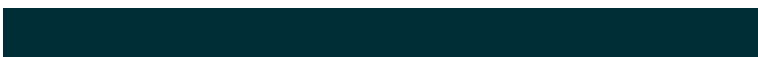
12110570



6976629



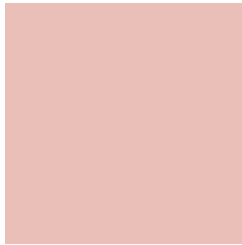
40117



11830

Previews

White Background



This preview shows how the Decimal color 15384504 looks on a white background.

Color Contrast Check

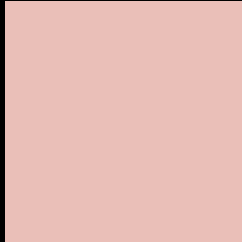
Large Text (above 18pt) WCAG AA × Fail

Any Text WCAG AA × Fail

Large Text (above 18pt) WCAG AAA × Fail

Any Text WCAG AAA × Fail

Black Background



This preview shows how the Decimal color 15384504 looks on a black background.

Color Contrast Check

Large Text (above 18pt) WCAG AA ✓ Pass

Any Text WCAG AA ✓ Pass

Large Text (above 18pt) WCAG AAA ✓ Pass

Any Text WCAG AAA ✓ Pass

If you want to check with other color combinations, try the [Color Contrast Checker](#).

Decimal 15384504 Background



This preview shows how black text looks on a background with the Decimal color 15384504.

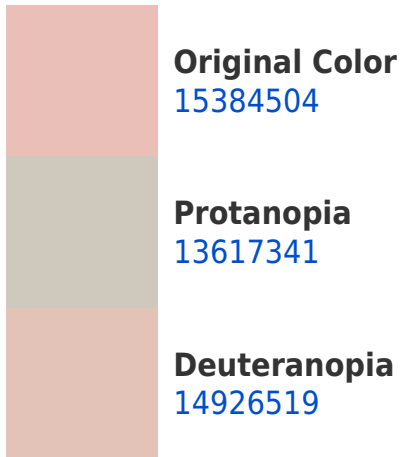



This preview shows how white text looks on a background with the Decimal color 15384504.

Color Blindness Simulation

Color vision deficiency is a very complex topic, and I could not describe the different causes any better than Wikipedia does, so if you want to learn more, you should check out their [article about color blindness](#).

Dichromacy





Tritanopia
15514827

Trichromacy



Original Color
15384504

Protanomaly
14271931

Deuteranomaly
15122871

Tritanomaly
15449540

Monochromacy



Original Color
15384504

Achromatopsia
13355979

Achromatomaly
14075844

CSS Examples

Text

The CSS property to change the color of the text to Decimal 15384504 is called "color". The color property can be set on classes, ids or directly on the HTML element.

This example shows how text in the color #EABFB8 looks like.

```
.text, #text, p{  
    color:#EABFB8  
}
```

If you want to add a text shadow in that color use the text-shadow property, you can generate a text shadow directly with our [CSS Text Shadow Generator](#).

Here you see how black text with a 4 pixel #EABFB8 colored shadow looks like.

```
.shadow{ text-shadow: 4px 4px 2px #EABFB8  
}
```

Border

The CSS property to change the border of an element to Decimal 15384504 is called "border". The border property can be set on classes, ids or directly on the HTML element.

This example shows the color as border, it can be applied via the CSS property "border" or "border-color".

```
.border, #border, table{ border:4px solid  
#EABFB8 }
```

If only the border color should be changed use the property `border-color`.

```
.border{ border-color:#EABFB8 }
```

If you want to add a box shadow in that color use:

Here you see how a box with a 4 pixel #EABFB8 colored shadow looks like.

```
.boxshadow{ -moz-box-shadow:4px 4px 4px  
4px #EABFB8; -webkit-box-shadow:4px 4px  
4px 4px #EABFB8; box-shadow:4px 4px 4px  
4px #EABFB8 }
```

Background

The CSS property to change the background color of an element to Decimal 15384504 is called "background". The background property can be set on classes, ids or directly on the HTML element.

```
.background, #background, body{  
background:#EABFB8 }
```

If only the background color should be changed can be used:

```
.background{ background-color:#EABFB8 }
```

This example shows the color as background, it is applied via the CSS property "background".

To optimize and compress your CSS code, you can use our [online CSS compressor and optimizer](#) based on csstidy. If you want to create a linear or radial gradient as background or border, check our [CSS Gradient Generator](#).

Hey! You found this booklet interesting? Support Converting Colors with the new Membership Option!

The pro membership hides all ads, plus gives you double the colors in the color bucket, and more awesome pro features!

[Learn more, Memberships starting at \\$2.50/m!](#)

**Follow me
on Twitter!**

@ConvertingColor