

Converting Colors

Decimal(15386814)

Have a look what the booklet for
Decimal(15386814) contains.

Decimal(15386814)	3
<i>Conversions</i>	4
<i>Details</i>	6
<i>Harmonies</i>	11
<i>Previews</i>	23
<i>Color Blindness Simulation</i>	26
<i>CSS Examples</i>	29

Color

Decimal(15386814)

Conversions

Conversions Part 1

Format	Color
Hex	EAC8BE
RGB	234, 200, 190
RGB Percent	92%, 78%, 75%
CMY	0.0824, 0.2157, 0.2549
CMYK	0.00, 0.15, 0.19, 0.08
HSL	14°, 51%, 83%
HSV	14°, 19%, 92%
XYZ	63.8802, 62.5187, 57.4157
YIQ	209.0260, 23.4740, 4.0980

Conversions

Conversions Part 2

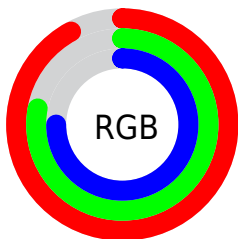
Format	Color
RYB	234, 203, 190
Decimal	15386814
CIELab	83.19, 10.44, 9.43
CIElCh	83, 14.068, 42.119
Yxy	62.5187, 0.3475, 0.3401
Android (android.graphics.Color)	4293576894 (0xFFEAC8BE)
YUV	209.0260, -9.3798, 21.9022
Hunter-Lab	79.0688, 5.8411, 12.2948

Details

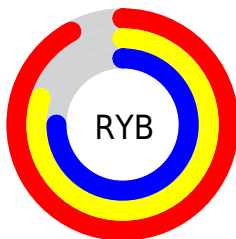
The Decimal color **15386814** is a light color, and the websafe version is hex **FFCCCC**. A complement of this color would be **12509418**, and the grayscale version is **13750737**.

A 20% lighter version of the original color is **16777206**, and **11702921** is the 20% darker color. If you saturate the color by 10%, you get **15382183**, and if you desaturate by 10%, it is **15391445**.

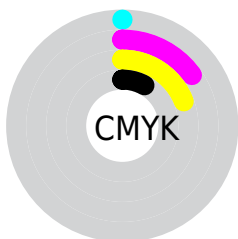
Distribution



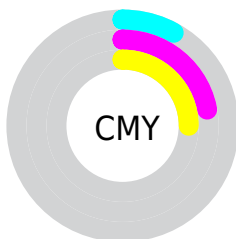
- Red (92%)
- Green (78%)
- Blue (75%)



- Red (92%)
- Yellow (80%)
- Blue (75%)



- Cyan (0%)
- Magenta (15%)
- Yellow (19%)
- Black (8%)



- Cyan (8%)
- Magenta (22%)
- Yellow (25%)

Brightness & Saturation Gradients

These gradients show how the Decimal color 15386814 changes by changing the brightness by 10 percent. The first figure shows a shift by +10% for each color and the second figure -10%.

Similar to the brightness gradients but the following saturation gradients show a change of the Decimal color 15386814 by changing the saturation by 10% instead.

 15386814

 15386814

16777215

 13544867

 16777206

 11702921

 9926767

 8216663

 6506560

 4927786

 3349525

 2032384

 0

 15386814

 15386814

 15382183

 15391445

 15377551

 15396077

 15372920

 15400703

 15368288

 15400959

 15363657

 15359026

 15354138

 15349507

 15348992

Harmonies

Analogous

The Analogous color harmony consists of three colors that are next to each other on the color wheel.



15451850



15386814



14863542

Triad

The Triadic color harmony groups three colors that are evenly spaced from another and form a triangle on the color wheel.



15386814



12048071



13160425

Complementary

The Complementary color scheme is a pair of colors which are on the opposite of each other on the color wheel.



15386814



12509418

Split Complementary

Split-complementary colors differ from the complementary color scheme. The scheme consists of three colors, the original color and two neighbors of the complement color.



12112872



15386814



11524052

Square

The Square scheme is like the rectangle color scheme, but the four colors are evenly spaced on the color wheel.



15386814



12965051



11523808



14207715

Rectangle

The Rectangle color scheme consists of four colors that form a rectangle on the color wheel.



15386814



14274485



11523808



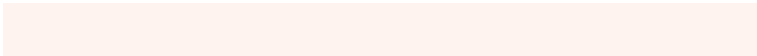
12767465

Sweetspot

The Sweet Spot groups the original color and five complimentary colors.



15386814



16774128



15384288



8419703



0



8421504

Same Dimension

The Same Dimension uses a secret algorithm to generate beautiful new colors.



15386814



16765636



15392446



7695466



11872512



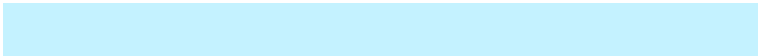
3542016

Inverse Universe

The Inverse Universe completely reimagines the original color for something new.



12509418



12907263



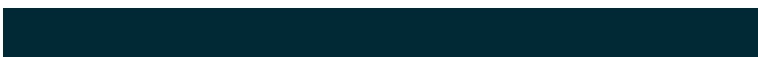
12503786



6976373



36021



10550

Previews

White Background



This preview shows how the Decimal color 15386814 looks on a white background.

Color Contrast Check

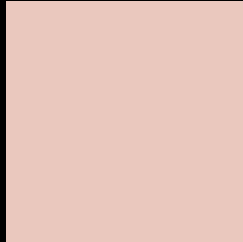
Large Text (above 18pt) WCAG AA × Fail

Any Text WCAG AA × Fail

Large Text (above 18pt) WCAG AAA × Fail

Any Text WCAG AAA × Fail

Black Background



This preview shows how the Decimal color 15386814 looks on a black background.

Color Contrast Check

Large Text (above 18pt) WCAG AA ✓ Pass

Any Text WCAG AA ✓ Pass

Large Text (above 18pt) WCAG AAA ✓ Pass

Any Text WCAG AAA ✓ Pass

If you want to check with other color combinations, try the [Color Contrast Checker](#).

Decimal 15386814 Background



This preview shows how black text looks on a background with the Decimal color 15386814.




This preview shows how white text looks on a background with the Decimal color 15386814.

Color Blindness Simulation

Color vision deficiency is a very complex topic, and I could not describe the different causes any better than Wikipedia does, so if you want to learn more, you should check out their [article about color blindness](#).

Dichromacy





Tritanopia
15582676

Trichromacy



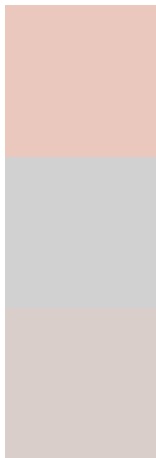
Original Color
15386814

Protanomaly
14535873

Deuteranomaly
15386814

Tritanomaly
15517388

Monochromacy



Original Color
15386814

Achromatopsia
13750737

Achromatomaly
14339786

CSS Examples

Text

The CSS property to change the color of the text to Decimal 15386814 is called "color". The color property can be set on classes, ids or directly on the HTML element.

This example shows how text in the color #EAC8BE looks like.

```
.text, #text, p{  
    color:#EAC8BE  
}
```

If you want to add a text shadow in that color use the text-shadow property, you can generate a text shadow directly with our [CSS Text Shadow Generator](#).

Here you see how black text with a 4 pixel #EAC8BE colored shadow looks like.

```
.shadow{ text-shadow: 4px 4px 2px #EAC8BE
}
```

Border

The CSS property to change the border of an element to Decimal 15386814 is called "border". The border property can be set on classes, ids or directly on the HTML element.

This example shows the color as border, it can be applied via the CSS property "border" or "border-color".

```
.border, #border, table{ border:4px solid
#EAC8BE }
```

If only the border color should be changed use the property `border-color`.

```
.border{ border-color:#EAC8BE }
```

If you want to add a box shadow in that color use:

Here you see how a box with a 4 pixel #EAC8BE colored shadow looks like.

```
.boxshadow{ -moz-box-shadow:4px 4px 4px  
4px #EAC8BE; -webkit-box-shadow:4px 4px  
4px 4px #EAC8BE; box-shadow:4px 4px 4px  
4px #EAC8BE }
```

Background

The CSS property to change the background color of an element to Decimal 15386814 is called "background". The background property can be set on classes, ids or directly on the HTML element.

```
.background, #background, body{  
background:#EAC8BE }
```

If only the background color should be changed can be used:

```
.background{ background-color:#EAC8BE }
```

This example shows the color as background, it is applied via the CSS property "background".

To optimize and compress your CSS code, you can use our [online CSS compressor and optimizer](#) based on csstidy. If you want to create a linear or radial gradient as background or border, check our [CSS Gradient Generator](#).

Hey! You found this booklet interesting? Support Converting Colors with the new Membership Option!

The pro membership hides all ads, plus gives you double the colors in the color bucket, and more awesome pro features!

[Learn more, Memberships starting at \\$2.50/m!](#)

**Follow me
on Twitter!**

@ConvertingColor