

# Converting Colors

Decimal(15388597)

Have a look what the booklet for  
Decimal(15388597) contains.

<b>Decimal(15388597)</b> .....	3
<i><b>Conversions</b></i> .....	4
<i><b>Details</b></i> .....	6
<i><b>Harmonies</b></i> .....	11
<i><b>Previews</b></i> .....	23
<i><b>Color Blindness Simulation</b></i> .....	26
<i><b>CSS Examples</b></i> .....	29

# **Color**

**Decimal(15388597)**

# Conversions

## Conversions Part 1

Format	Color
Hex	EACFB5
RGB	234, 207, 181
RGB Percent	92%, 81%, 71%
CMY	0.0824, 0.1882, 0.2902
CMYK	0.00, 0.12, 0.23, 0.08
HSL	29°, 56%, 81%
HSV	29°, 23%, 92%
XYZ	64.5850, 65.4543, 52.9460
YIQ	212.1090, 24.4380, -2.3620

# Conversions

## Conversions Part 2

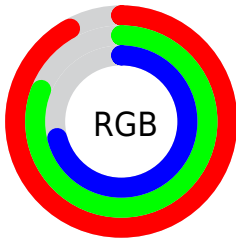
Format	Color
R <sub>Y</sub> B	234, 232, 181
Decimal	15388597
CIE Lab	84.72, 5.45, 16.38
CIE LCh	85, 17.260, 71.593
Yxy	65.4543, 0.3530, 0.3577
Android (android.graphics.Color)	4293578677 (0xFFEACFB5)
YUV	212.1090, -15.3367, 19.1984
Hunter-Lab	80.9038, 0.9137, 17.8314

# Details

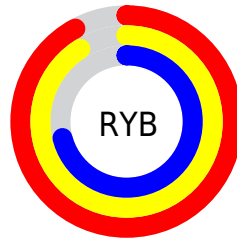
The Decimal color **15388597** is a light color, and the websafe version is hex **FFCCCC**. A complement of this color would be **11915498**, and the grayscale version is **13948116**.

A 20% lighter version of the original color is **16777197**, and **11704704** is the 20% darker color. If you saturate the color by 10%, you get **15385502**, and if you desaturate by 10%, it is **15391692**.

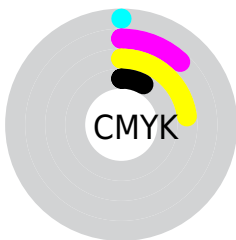
# Distribution



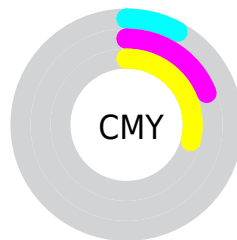
- Red (92%)
- Green (81%)
- Blue (71%)



- Red (92%)
- Yellow (91%)
- Blue (71%)



- Cyan (0%)
- Magenta (12%)
- Yellow (23%)
- Black (8%)



- Cyan (8%)
- Magenta (19%)
- Yellow (29%)

# Brightness & Saturation Gradients

These gradients show how the Decimal color 15388597 changes by changing the brightness by 10 percent. The first figure shows a shift by +10% for each color and the second figure -10%.

Similar to the brightness gradients but the following saturation gradients show a change of the Decimal color 15388597 by changing the saturation by 10% instead.



 15388597

 15388597

16777215

 13546394

 16777197

 11704704

 9928551

 8152655

 6508088

 4863778

 3351053

 1903616

 0

 15388597

 15388597

 15385502

 15391692

 15382406

 15394788

 15379311

 15397883

 15376215

 15400959

 15373120

 15370025

 15367185

 15364864

# Harmonies

## Analogous

The Analogous color harmony consists of three colors that are next to each other on the color wheel.



16042687



15388597



14341300

# Triad

The Triadic color harmony groups three colors that are evenly spaced from another and form a triangle on the color wheel.



15388597



11263449



14601708

# Complementary

The Complementary color scheme is a pair of colors which are on the opposite of each other on the color wheel.



15388597



11915498

# Split Complementary

Split-complementary colors differ from the complementary color scheme. The scheme consists of three colors, the original color and two neighbors of the complement color.



13292531



15388597



11263208

# Square

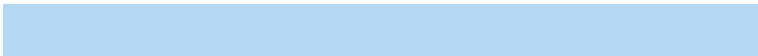
The Square scheme is like the rectangle color scheme, but the four colors are evenly spaced on the color wheel.



15388597



11984073



11983090



15649246

# Rectangle

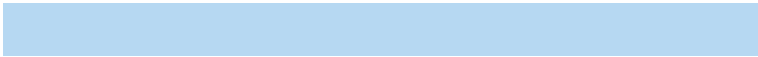
The Rectangle color scheme consists of four colors that form a rectangle on the color wheel.



15388597



13555896



11983090



14209007



# Sweetspot

The Sweet Spot groups the original color and five complimentary colors.



15388597



16774893



15381968



8419957



0



8421504



# Same Dimension

The Same Dimension uses a secret algorithm to generate beautiful new colors.



15388597



16768186



15395253



7696234



11884800



3545600

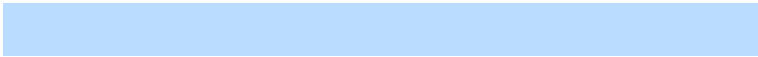


# Inverse Universe

The Inverse Universe completely reimagines the original color for something new.



11915498



12246527



11908842



6975605



23733

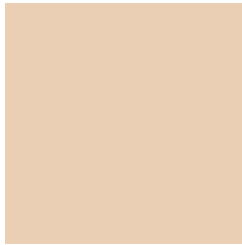


6966



# Previews

## White Background



This preview shows how the Decimal color 15388597 looks on a white background.

## Color Contrast Check

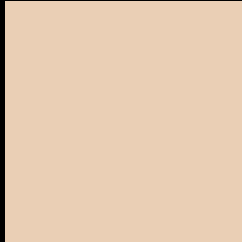
Large Text (above 18pt) WCAG AA × Fail

Any Text WCAG AA × Fail

Large Text (above 18pt) WCAG AAA × Fail

Any Text WCAG AAA × Fail

# Black Background



This preview shows how the Decimal color 15388597 looks on a black background.

## Color Contrast Check

Large Text (above 18pt) WCAG AA ✓ Pass

Any Text WCAG AA ✓ Pass

Large Text (above 18pt) WCAG AAA ✓ Pass

Any Text WCAG AAA ✓ Pass

If you want to check with other color combinations, try the [Color Contrast Checker](#).



## Decimal 15388597 Background



This preview shows how black text looks on a background with the Decimal color 15388597.




This preview shows how white text looks on a background with the Decimal color 15388597.

# Color Blindness Simulation

Color vision deficiency is a very complex topic, and I could not describe the different causes any better than Wikipedia does, so if you want to learn more, you should check out their [article about color blindness](#).

## Dichromacy





**Tritanopia**  
15649497

# Trichromacy



# Monochromacy



# CSS Examples

## Text

The CSS property to change the color of the text to Decimal 15388597 is called "color". The color property can be set on classes, ids or directly on the HTML element.

This example shows how text in the color #EACFB5 looks like.

```
.text, #text, p{  
    color:#EACFB5  
}
```

If you want to add a text shadow in that color use the text-shadow property, you can generate a text shadow directly with our [CSS Text Shadow Generator](#).

Here you see how black text with a 4 pixel #EACFB5 colored shadow looks like.

```
.shadow{ text-shadow: 4px 4px 2px #EACFB5  
}
```

## Border

The CSS property to change the border of an element to Decimal 15388597 is called "border". The border property can be set on classes, ids or directly on the HTML element.

This example shows the color as border, it can be applied via the CSS property "border" or "border-color".

```
.border, #border, table{ border:4px solid  
#EACFB5 }
```

If only the border color should be changed use the property `border-color`.

```
.border{ border-color:#EACFB5 }
```

If you want to add a box shadow in that color use:

Here you see how a box with a 4 pixel #EACFB5 colored shadow looks like.

```
.boxshadow{ -moz-box-shadow:4px 4px 4px  
4px #EACFB5; -webkit-box-shadow:4px 4px  
4px 4px #EACFB5; box-shadow:4px 4px 4px  
4px #EACFB5 }
```

# Background

The CSS property to change the background color of an element to Decimal 15388597 is called "background". The background property can be set on classes, ids or directly on the HTML element.

```
.background, #background, body{  
background:#EACFB5 }
```

If only the background color should be changed can be used:

```
.background{ background-color:#EACFB5 }
```

This example shows the color as background, it is applied via the CSS property "background".

To optimize and compress your CSS code, you can use our [online CSS compressor and optimizer](#) based on csstidy. If you want to create a linear or radial gradient as background or border, check our [CSS Gradient Generator](#).



Hey! You found this booklet interesting? Support Converting Colors with the new Membership Option!

The pro membership hides all ads, plus gives you double the colors in the color bucket, and more awesome pro features!

**[Learn more, Memberships starting at \\$2.50/m!](#)**

**Follow me  
on Twitter!**

@ConvertingColor