

Converting Colors

Decimal(15388631)

Have a look what the booklet for
Decimal(15388631) contains.

Decimal(15388631)	3
<i>Conversions</i>	4
<i>Details</i>	6
<i>Harmonies</i>	11
<i>Previews</i>	23
<i>Color Blindness Simulation</i>	26
<i>CSS Examples</i>	29

Color

Decimal(15388631)

Conversions

Conversions Part 1

Format	Color
Hex	EACFD7
RGB	234, 207, 215
RGB Percent	92%, 81%, 84%
CMY	0.0824, 0.1882, 0.1569
CMYK	0.00, 0.12, 0.08, 0.08
HSL	342°, 39%, 86%
HSV	342°, 12%, 92%
XYZ	68.5102, 67.0244, 73.6161
YIQ	215.9850, 13.5240, 8.2120

Conversions

Conversions Part 2

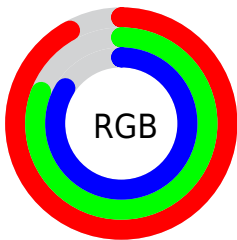
Format	Color
R_{YB}	234, 207, 215
Decimal	15388631
CIE _{Lab}	85.52, 10.74, -0.51
CIE _{LCh}	86, 10.749, 357.288
Yxy	67.0244, 0.3276, 0.3205
Android (android.graphics.Color)	4293578711 (0xFFEACFD7)
YUV	215.9850, -0.4856, 15.7992
Hunter-Lab	81.8684, 6.1051, 3.9943

Details

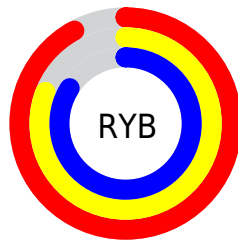
The Decimal color **15388631** is a light color, and the websafe version is hex **FFCCCC**. A complement of this color would be **13626082**, and the grayscale version is **14211288**.

A 20% lighter version of the original color is **16777215**, and **11704736** is the 20% darker color. If you saturate the color by 10%, you get **15382727**, and if you desaturate by 10%, it is **15394535**.

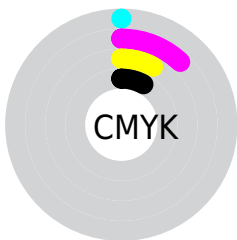
Distribution



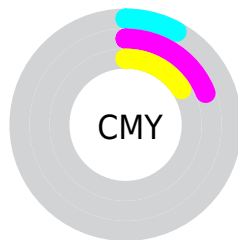
- Red (92%)
- Green (81%)
- Blue (84%)



- Red (92%)
- Yellow (81%)
- Blue (84%)



- Cyan (0%)
- Magenta (12%)
- Yellow (8%)
- Black (8%)



- Cyan (8%)
- Magenta (19%)
- Yellow (16%)

Brightness & Saturation Gradients

These gradients show how the Decimal color 15388631 changes by changing the brightness by 10 percent. The first figure shows a shift by +10% for each color and the second figure -10%.

Similar to the brightness gradients but the following saturation gradients show a change of the Decimal color 15388631 by changing the saturation by 10% instead.

15388631

15388631

16777215

13546427

11704736

9928582

8218221

6573653

4994878

3481896

2100243

0

 15388631

 15388631

 15382727

 15394535

 15376566

 15400696

 15370662

 15400959

 15364501

 15358597

 15352692

 15346532

 15340627

 15335493

Harmonies

Analogous

The Analogous color harmony consists of three colors that are next to each other on the color wheel.



14864865



15388631



15519693

Triad

The Triadic color harmony groups three colors that are evenly spaced from another and form a triangle on the color wheel.



15388631



13949124



12638950

Complementary

The Complementary color scheme is a pair of colors which are on the opposite of each other on the color wheel.



15388631



13626082

Split Complementary

Split-complementary colors differ from the complementary color scheme. The scheme consists of three colors, the original color and two neighbors of the complement color.



12442847



15388631



13163466

Square

The Square scheme is like the rectangle color scheme, but the four colors are evenly spaced on the color wheel.



15388631



14669250



12639444



13293546

Rectangle

The Rectangle color scheme consists of four colors that form a rectangle on the color wheel.



15388631



15389127



12639444



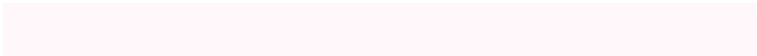
12508132

Sweetspot

The Sweet Spot groups the original color and five complimentary colors.



15388631



16775162



14864362



8419964



0



8421504

Same Dimension

The Same Dimension uses a secret algorithm to generate beautiful new colors.



15388631



16767974



15389903



7694957



11862070



3538960

Inverse Universe

The Inverse Universe completely reimagines the original color for something new.



15388631



16767974



13624810



7694957



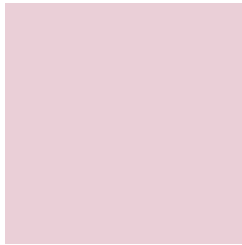
11862070



3538960

Previews

White Background



This preview shows how the Decimal color 15388631 looks on a white background.

Color Contrast Check

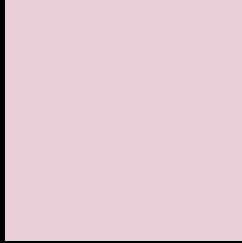
Large Text (above 18pt) WCAG AA × Fail

Any Text WCAG AA × Fail

Large Text (above 18pt) WCAG AAA × Fail

Any Text WCAG AAA × Fail

Black Background



This preview shows how the Decimal color 15388631 looks on a black background.

Color Contrast Check

Large Text (above 18pt) WCAG AA ✓ Pass

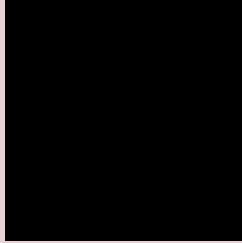
Any Text WCAG AA ✓ Pass

Large Text (above 18pt) WCAG AAA ✓ Pass

Any Text WCAG AAA ✓ Pass

If you want to check with other color combinations, try the [Color Contrast Checker](#).

Decimal 15388631 Background



This preview shows how black text looks on a background with the Decimal color 15388631.



This preview shows how white text looks on a background with the Decimal color 15388631.

Color Blindness Simulation

Color vision deficiency is a very complex topic, and I could not describe the different causes any better than Wikipedia does, so if you want to learn more, you should check out their [article about color blindness](#).


Dichromacy



Original Color
15388631

Protanopia
14210522

Deuteranopia
15388631



Tritanopia
15453918

Trichromacy



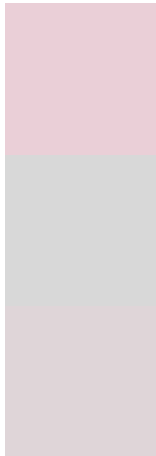
Original Color
15388631

Protanomaly
14668761

Deuteranomaly
15388631

Tritanomaly
15453915

Monochromacy



Original Color
15388631

Achromatopsia
14211288

Achromatomaly
14669272

CSS Examples

Text

The CSS property to change the color of the text to Decimal 15388631 is called "color". The color property can be set on classes, ids or directly on the HTML element.

This example shows how text in the color #EACFD7 looks like.

```
.text, #text, p{  
    color:#EACFD7  
}
```

If you want to add a text shadow in that color use the text-shadow property, you can generate a text shadow directly with our [CSS Text Shadow Generator](#).

Here you see how black text with a 4 pixel #EACFD7 colored shadow looks like.

```
.shadow{ text-shadow: 4px 4px 2px #EACFD7
}
```

Border

The CSS property to change the border of an element to Decimal 15388631 is called "border". The border property can be set on classes, ids or directly on the HTML element.

This example shows the color as border, it can be applied via the CSS property "border" or "border-color".

```
.border, #border, table{ border:4px solid
#EACFD7 }
```

If only the border color should be changed use the property `border-color`.

```
.border{ border-color:#EACFD7 }
```

If you want to add a box shadow in that color use:

Here you see how a box with a 4 pixel #EACFD7 colored shadow looks like.

```
.boxshadow{ -moz-box-shadow:4px 4px 4px  
4px #EACFD7; -webkit-box-shadow:4px 4px  
4px 4px #EACFD7; box-shadow:4px 4px 4px  
4px #EACFD7 }
```

Background

The CSS property to change the background color of an element to Decimal 15388631 is called "background". The background property can be set on classes, ids or directly on the HTML element.

```
.background, #background, body{  
background:#EACFD7 }
```

If only the background color should be changed can be used:

```
.background{ background-color:#EACFD7 }
```

This example shows the color as background, it is applied via the CSS property "background".

To optimize and compress your CSS code, you can use our [online CSS compressor and optimizer](#) based on csstidy. If you want to create a linear or radial gradient as background or border, check our [CSS Gradient Generator](#).

Hey! You found this booklet interesting? Support Converting Colors with the new Membership Option!

The pro membership hides all ads, plus gives you double the colors in the color bucket, and more awesome pro features!

[Learn more, Memberships starting at \\$2.50/m!](#)

**Follow me
on Twitter!**

@ConvertingColor