

Converting Colors

Decimal(15389147)

Have a look what the booklet for
Decimal(15389147) contains.

Decimal(15389147)	3
<i>Conversions</i>	4
<i>Details</i>	6
<i>Harmonies</i>	11
<i>Previews</i>	23
<i>Color Blindness Simulation</i>	26
<i>CSS Examples</i>	29

Color

Decimal(15389147)

Conversions

Conversions Part 1

Format	Color
Hex	EAD1DB
RGB	234, 209, 219
RGB Percent	92%, 82%, 86%
CMY	0.0824, 0.1804, 0.1412
CMYK	0.00, 0.11, 0.06, 0.08
HSL	336°, 37%, 87%
HSV	336°, 11%, 92%
XYZ	69.5183, 68.2078, 76.5192
YIQ	217.6150, 11.6900, 8.4100

Conversions

Conversions Part 2

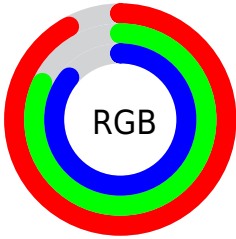
Format	Color
R_{YB}	234, 209, 219
Decimal	15389147
CIE _{Lab}	86.11, 10.36, -1.76
CIE _{LCh}	86, 10.514, 350.351
Yxy	68.2078, 0.3245, 0.3184
Android (android.graphics.Color)	4293579227 (0xFFEAD1DB)
YUV	217.6150, 0.6828, 14.3696
Hunter-Lab	82.5880, 5.7230, 2.8784

Details

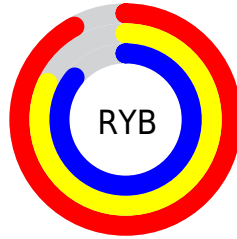
The Decimal color **15389147** is a light color, and the websafe version is hex **CCCCCC**. A complement of this color would be **13757152**, and the grayscale version is **14342874**.

A 20% lighter version of the original color is **16777215**, and **11705252** is the 20% darker color. If you saturate the color by 10%, you get **15383245**, and if you desaturate by 10%, it is **15395049**.

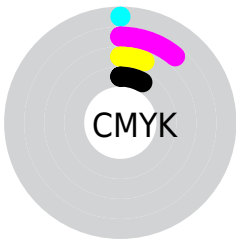
Distribution



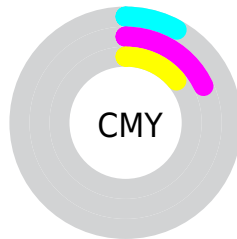
- Red (92%)
- Green (82%)
- Blue (86%)



- Red (92%)
- Yellow (82%)
- Blue (86%)



- Cyan (0%)
- Magenta (11%)
- Yellow (6%)
- Black (8%)



- Cyan (8%)
- Magenta (18%)
- Yellow (14%)

Brightness & Saturation Gradients

These gradients show how the Decimal color 15389147 changes by changing the brightness by 10 percent. The first figure shows a shift by +10% for each color and the second figure -10%.

Similar to the brightness gradients but the following saturation gradients show a change of the Decimal color 15389147 by changing the saturation by 10% instead.

15389147

15389147

16777215

13546943

11705252

9929098

8218480

6573912

4995137

3482411

2100758

0

 15389147

 15389147

 15383245

 15395049

 15377087

 15400951

 15371185

 15400959

 15365027

 15359125

 15353223

 15347065

 15341163

 15335518

Harmonies

Analogous

The Analogous color harmony consists of three colors that are next to each other on the color wheel.



14799844



15389147



15585745

Triad

The Triadic color harmony groups three colors that are evenly spaced from another and form a triangle on the color wheel.



15389147



14211525



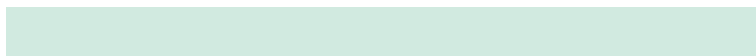
12704998

Complementary

The Complementary color scheme is a pair of colors which are on the opposite of each other on the color wheel.



15389147



13757152

Split Complementary

Split-complementary colors differ from the complementary color scheme. The scheme consists of three colors, the original color and two neighbors of the complement color.



12574174



15389147



13491402

Square

The Square scheme is like the rectangle color scheme, but the four colors are evenly spaced on the color wheel.



15389147



14931652



12836308



13294059

Rectangle

The Rectangle color scheme consists of four colors that form a rectangle on the color wheel.



15389147



15520459



12836308



12639716

Sweetspot

The Sweet Spot groups the original color and five complimentary colors.



15389147



16775162



14733802



8419964



0



8421504

Same Dimension

The Same Dimension uses a secret algorithm to generate beautiful new colors.



15389147



16768747



15389649



7694958



11862088



3538965

Inverse Universe

The Inverse Universe completely reimagines the original color for something new.



15389147



16768747



13756394



7694958



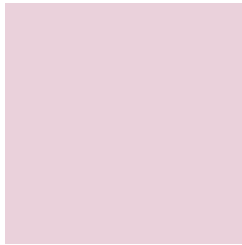
11862088



3538965

Previews

White Background



This preview shows how the Decimal color 15389147 looks on a white background.

Color Contrast Check

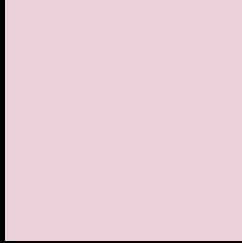
Large Text (above 18pt) WCAG AA × Fail

Any Text WCAG AA × Fail

Large Text (above 18pt) WCAG AAA × Fail

Any Text WCAG AAA × Fail

Black Background



This preview shows how the Decimal color 15389147 looks on a black background.

Color Contrast Check

Large Text (above 18pt) WCAG AA ✓ Pass

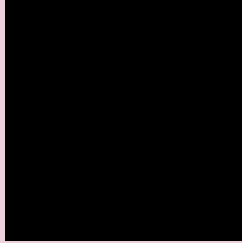
Any Text WCAG AA ✓ Pass

Large Text (above 18pt) WCAG AAA ✓ Pass

Any Text WCAG AAA ✓ Pass

If you want to check with other color combinations, try the [Color Contrast Checker](#).

Decimal 15389147 Background



This preview shows how black text looks on a background with the Decimal color 15389147.



This preview shows how white text looks on a background with the Decimal color 15389147.

Color Blindness Simulation

Color vision deficiency is a very complex topic, and I could not describe the different causes any better than Wikipedia does, so if you want to learn more, you should check out their [article about color blindness](#).


Dichromacy



Original Color
15389147

Protanopia
14276318

Deuteranopia
15454683



Tritanopia
15454432

Trichromacy



Original Color
15389147

Protanomaly
14669021

Deuteranomaly
15454683

Tritanomaly
15454430

Monochromacy



Original Color
15389147

Achromatopsia
14342874

Achromatomaly
14735322

CSS Examples

Text

The CSS property to change the color of the text to Decimal 15389147 is called "color". The color property can be set on classes, ids or directly on the HTML element.

This example shows how text in the color #EAD1DB looks like.

```
.text, #text, p{  
    color:#EAD1DB  
}
```

If you want to add a text shadow in that color use the text-shadow property, you can generate a text shadow directly with our [CSS Text Shadow Generator](#).

Here you see how black text with a 4 pixel #EAD1DB colored shadow looks like.

```
.shadow{ text-shadow: 4px 4px 2px #EAD1DB
}
```

Border

The CSS property to change the border of an element to Decimal 15389147 is called "border". The border property can be set on classes, ids or directly on the HTML element.

This example shows the color as border, it can be applied via the CSS property "border" or "border-color".

```
.border, #border, table{ border:4px solid
#EAD1DB }
```

If only the border color should be changed use the property `border-color`.

```
.border{ border-color:#EAD1DB }
```

If you want to add a box shadow in that color use:

Here you see how a box with a 4 pixel #EAD1DB colored shadow looks like.

```
.boxshadow{ -moz-box-shadow:4px 4px 4px  
4px #EAD1DB; -webkit-box-shadow:4px 4px  
4px 4px #EAD1DB; box-shadow:4px 4px 4px  
4px #EAD1DB }
```

Background

The CSS property to change the background color of an element to Decimal 15389147 is called "background". The background property can be set on classes, ids or directly on the HTML element.

```
.background, #background, body{  
background:#EAD1DB }
```

If only the background color should be changed can be used:

```
.background{ background-color:#EAD1DB }
```

This example shows the color as background, it is applied via the CSS property "background".

To optimize and compress your CSS code, you can use our [online CSS compressor and optimizer](#) based on csstidy. If you want to create a linear or radial gradient as background or border, check our [CSS Gradient Generator](#).

Hey! You found this booklet interesting? Support Converting Colors with the new Membership Option!

The pro membership hides all ads, plus gives you double the colors in the color bucket, and more awesome pro features!

[Learn more, Memberships starting at \\$2.50/m!](#)

**Follow me
on Twitter!**

@ConvertingColor