

Converting Colors

Decimal(15414889)

Have a look what the booklet for
Decimal(15414889) contains.

Decimal(15414889)	3
<i>Conversions</i>	4
<i>Details</i>	6
<i>Harmonies</i>	11
<i>Previews</i>	23
<i>Color Blindness Simulation</i>	26
<i>CSS Examples</i>	29

Color

Decimal(15414889)

Conversions

Conversions Part 1

Format	Color
Hex	EB3669
RGB	235, 54, 105
RGB Percent	92%, 21%, 41%
CMY	0.0784, 0.7882, 0.5882
CMYK	0.00, 0.77, 0.55, 0.08
HSL	343°, 82%, 57%
HSV	343°, 77%, 92%
XYZ	38.1299, 21.3204, 15.4702
YIQ	113.9330, 91.5050, 54.2330

Conversions

Conversions Part 2

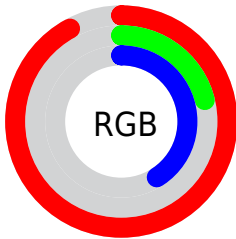
Format	Color
R_{YB}	235, 54, 105
Decimal	15414889
CIE Lab	53.30, 70.06, 15.12
CIE LCh	53, 71.674, 12.177
Yxy	21.3204, 0.5089, 0.2846
Android (android.graphics.Color)	4293604969 (0xFFEB3669)
YUV	113.9330, -4.4040, 106.1758
Hunter-Lab	46.1740, 66.5984, 12.4573

Details

The Decimal color **15414889** is a dark color, and the websafe version is hex **FF3366**. The color can be described as dark washed rose. A complement of this color would be **3599288**, and the grayscale version is **7500402**.

A 20% lighter version of the original color is **16741788**, and **11272250** is the 20% darker color. If you saturate the color by 10%, you get **15408984**, and if you desaturate by 10%, it is **15421050**.

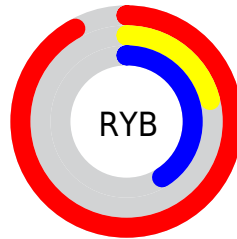
Distribution



Red (92%)

Green (21%)

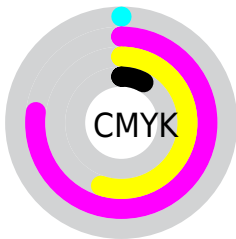
Blue (41%)



Red (92%)

Yellow (21%)

Blue (41%)

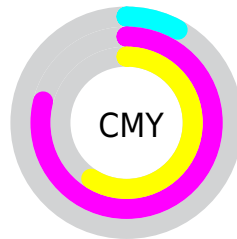


Cyan (0%)

Magenta (77%)

Yellow (55%)

Black (8%)



Cyan (8%)

Magenta (79%)

Yellow (59%)

Brightness & Saturation Gradients

These gradients show how the Decimal color 15414889 changes by changing the brightness by 10 percent. The first figure shows a shift by +10% for each color and the second figure -10%.

Similar to the brightness gradients but the following saturation gradients show a change of the Decimal color 15414889 by changing the saturation by 10% instead.

 15414889

 15414889

16777215

 13369425

 16741788

 11272250

 16749239

 9306149

 16756690

 7274513

 16764398

 5308419

 16772095

 3342338

 0

 15414889

 15414889

 15408984

 15421050

15402823

15426955

15401026

15432860

15439021

15444925

15451086

15457247

15463152

15466495

Harmonies

Analogous

The Analogous color harmony consists of three colors that are next to each other on the color wheel.



14303399



15414889



14503982

Triad

The Triadic color harmony groups three colors that are evenly spaced from another and form a triangle on the color wheel.



15414889



3707408



37365

Complementary

The Complementary color scheme is a pair of colors which are on the opposite of each other on the color wheel.



15414889



3599288

Split Complementary

Split-complementary colors differ from the complementary color scheme. The scheme consists of three colors, the original color and two neighbors of the complement color.



39377



15414889



38999

Square

The Square scheme is like the rectangle color scheme, but the four colors are evenly spaced on the color wheel.



15414889



8619008



39832



32761

Rectangle

The Rectangle color scheme consists of four colors that form a rectangle on the color wheel.



15414889



13001984



39832



38125

Sweetspot

The Sweet Spot groups the original color and five complimentary colors.



15414889



16762069



12072683



8412262



0



8421504

Same Dimension

The Same Dimension uses a secret algorithm to generate beautiful new colors.



15414889



16716887



15424822



7694957



11862067



3538959

Inverse Universe

The Inverse Universe completely reimagines the original color for something new.



15414889



16716887



3589355



7694957



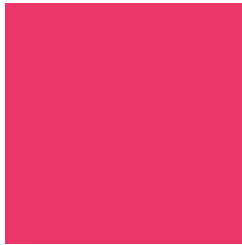
11862067



3538959

Previews

White Background



This preview shows how the Decimal color 15414889 looks on a white background.

Color Contrast Check

Large Text (above 18pt) WCAG AA ✓ Pass

Any Text WCAG AA × Fail

Large Text (above 18pt) WCAG AAA × Fail

Any Text WCAG AAA × Fail

Black Background



This preview shows how the Decimal color 15414889 looks on a black background.

Color Contrast Check

Large Text (above 18pt) WCAG AA ✓ Pass

Any Text WCAG AA ✓ Pass

Large Text (above 18pt) WCAG AAA ✓ Pass

Any Text WCAG AAA × Fail

If you want to check with other color combinations, try the [Color Contrast Checker](#).

Decimal 15414889 Background



This preview shows how black text looks on a background with the Decimal color 15414889.

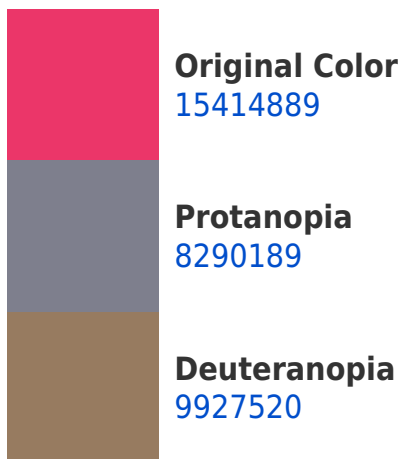


This preview shows how white text looks on a background with the Decimal color 15414889.

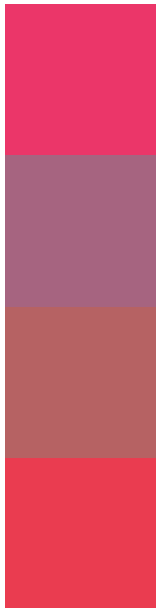
Color Blindness Simulation

Color vision deficiency is a very complex topic, and I could not describe the different causes any better than Wikipedia does, so if you want to learn more, you should check out their [article about color blindness](#).

Dichromacy



Trichromacy



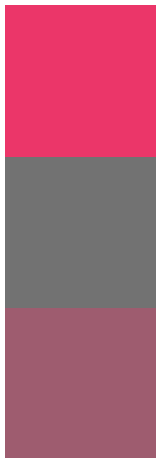
Original Color
15414889

Protanomaly
10904704

Deuteranomaly
11952739

Tritanomaly
15350864

Monochromacy



Original Color
15414889

Achromatopsia
7500402

Achromatomaly
10378351

CSS Examples

Text

The CSS property to change the color of the text to Decimal 15414889 is called "color". The color property can be set on classes, ids or directly on the HTML element.

This example shows how text in the color #EB3669 looks like.

```
.text, #text, p{  
    color:#EB3669  
}
```

If you want to add a text shadow in that color use the text-shadow property, you can generate a text shadow directly with our [CSS Text Shadow Generator](#).

Here you see how black text with a 4 pixel #EB3669 colored shadow looks like.

```
.shadow{ text-shadow: 4px 4px 2px #EB3669
}
```

Border

The CSS property to change the border of an element to Decimal 15414889 is called "border". The border property can be set on classes, ids or directly on the HTML element.

This example shows the color as border, it can be applied via the CSS property "border" or "border-color".

```
.border, #border, table{ border:4px solid
#EB3669 }
```

If only the border color should be changed use the property `border-color`.

```
.border{ border-color:#EB3669 }
```

If you want to add a box shadow in that color use:

Here you see how a box with a 4 pixel #EB3669 colored shadow looks like.

```
.boxshadow{ -moz-box-shadow:4px 4px 4px  
4px #EB3669; -webkit-box-shadow:4px 4px  
4px 4px #EB3669; box-shadow:4px 4px 4px  
4px #EB3669 }
```

Background

The CSS property to change the background color of an element to Decimal 15414889 is called "background". The background property can be set on classes, ids or directly on the HTML element.

```
.background, #background, body{  
background:#EB3669 }
```

If only the background color should be changed can be used:

```
.background{ background-color:#EB3669 }
```

This example shows the color as background, it is applied via the CSS property "background".

To optimize and compress your CSS code, you can use our [online CSS compressor and optimizer](#) based on csstidy. If you want to create a linear or radial gradient as background or border, check our [CSS Gradient Generator](#).

Hey! You found this booklet interesting? Support Converting Colors with the new Membership Option!

The pro membership hides all ads, plus gives you double the colors in the color bucket, and more awesome pro features!

[Learn more, Memberships starting at \\$2.50/m!](#)

**Follow me
on Twitter!**

@ConvertingColor