

Converting Colors

Decimal(15415146)

Have a look what the booklet for
Decimal(15415146) contains.

Decimal(15415146)	3
<i>Conversions</i>	4
<i>Details</i>	6
<i>Harmonies</i>	11
<i>Previews</i>	23
<i>Color Blindness Simulation</i>	26
<i>CSS Examples</i>	29

Color

Decimal(15415146)

Conversions

Conversions Part 1

Format	Color
Hex	EB376A
RGB	235, 55, 106
RGB Percent	92%, 22%, 42%
CMY	0.0784, 0.7843, 0.5843
CMYK	0.00, 0.77, 0.55, 0.08
HSL	343°, 82%, 57%
HSV	343°, 77%, 92%
XYZ	38.2287, 21.4352, 15.7582
YIQ	114.6340, 90.9090, 54.0210

Conversions

Conversions Part 2

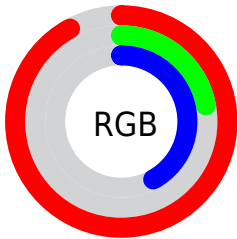
Format	Color
R_{YB}	235, 55, 106
Decimal	15415146
CIE Lab	53.42, 69.84, 14.69
CIE LCh	53, 71.373, 11.876
Yxy	21.4352, 0.5069, 0.2842
Android (android.graphics.Color)	4293605226 (0xFFEB376A)
YUV	114.6340, -4.2566, 105.5610
Hunter-Lab	46.2981, 66.3669, 12.2285

Details

The Decimal color **15415146** is a dark color, and the websafe version is hex **FF3366**. The color can be described as dark washed rose. A complement of this color would be **3664824**, and the grayscale version is **7566195**.

A 20% lighter version of the original color is **16741789**, and **11272251** is the 20% darker color. If you saturate the color by 10%, you get **15408985**, and if you desaturate by 10%, it is **15421051**.

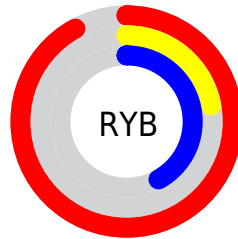
Distribution



Red (92%)

Green (22%)

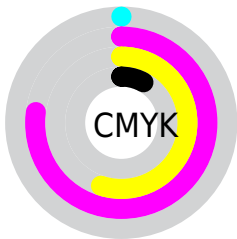
Blue (42%)



Red (92%)

Yellow (22%)

Blue (42%)

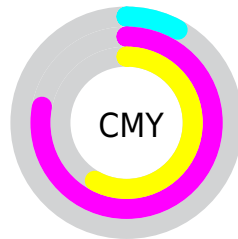


Cyan (0%)

Magenta (77%)

Yellow (55%)

Black (8%)



Cyan (8%)

Magenta (78%)

Yellow (58%)

Brightness & Saturation Gradients

These gradients show how the Decimal color 15415146 changes by changing the brightness by 10 percent. The first figure shows a shift by +10% for each color and the second figure -10%.

Similar to the brightness gradients but the following saturation gradients show a change of the Decimal color 15415146 by changing the saturation by 10% instead.

 15415146

 15415146

16777215

 13370194

 16741789

 11272251

 16749496

 9306150

 16756947

 7274514

 16764656

 5373955

 16772095

 3342338

 0

 15415146

 15415146

 15408985

 15421051

■ 15403080

■ 15427212

■ 15401027

■ 15433117

■ 15439277

■ 15445182

■ 15451343

■ 15457248

■ 15463409

■ 15466495

Harmonies

Analogous

The Analogous color harmony consists of three colors that are next to each other on the color wheel.



14238375



15415146



14504239

Triad

The Triadic color harmony groups three colors that are evenly spaced from another and form a triangle on the color wheel.



15415146



3838481



37365

Complementary

The Complementary color scheme is a pair of colors which are on the opposite of each other on the color wheel.



15415146



3664824

Split Complementary

Split-complementary colors differ from the complementary color scheme. The scheme consists of three colors, the original color and two neighbors of the complement color.



39377



15415146



38999

Square

The Square scheme is like the rectangle color scheme, but the four colors are evenly spaced on the color wheel.



15415146



8684800



39831



32761

Rectangle

The Rectangle color scheme consists of four colors that form a rectangle on the color wheel.



15415146



13001984



39831



38380

Sweetspot

The Sweet Spot groups the original color and five complimentary colors.



15415146



16762069



12072939



8412262



0



8421504

Same Dimension

The Same Dimension uses a secret algorithm to generate beautiful new colors.



15415146



16716887



15425079



7694957



11862067



3538959

Inverse Universe

The Inverse Universe completely reimagines the original color for something new.



15415146



16716887



3654891



7694957



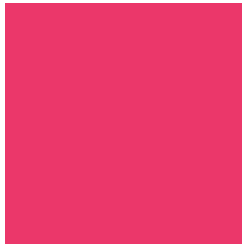
11862067



3538959

Previews

White Background



This preview shows how the Decimal color 15415146 looks on a white background.

Color Contrast Check

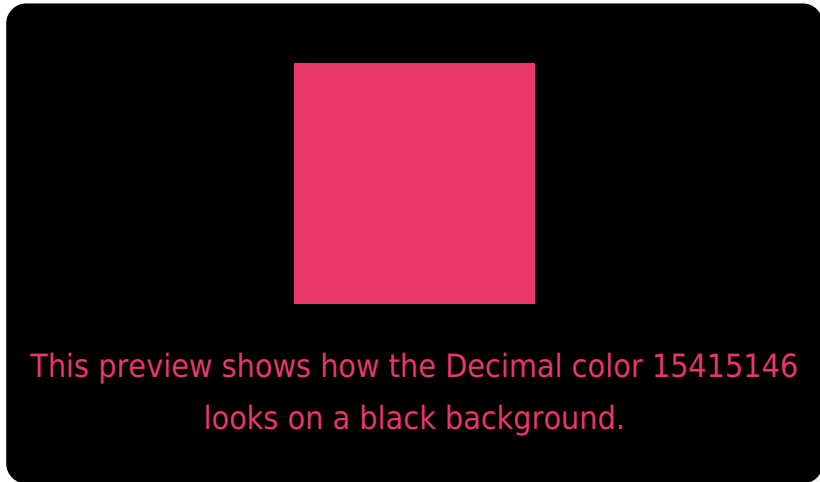
Large Text (above 18pt) WCAG AA ✓ Pass

Any Text WCAG AA × Fail

Large Text (above 18pt) WCAG AAA × Fail

Any Text WCAG AAA × Fail

Black Background



Color Contrast Check

Large Text (above 18pt) WCAG AA ✓ Pass

Any Text WCAG AA ✓ Pass

Large Text (above 18pt) WCAG AAA ✓ Pass

Any Text WCAG AAA × Fail

If you want to check with other color combinations, try the [Color Contrast Checker](#).

Decimal 15415146 Background



This preview shows how black text looks on a background with the Decimal color 15415146.




This preview shows how white text looks on a background with the Decimal color 15415146.

Color Blindness Simulation

Color vision deficiency is a very complex topic, and I could not describe the different causes any better than Wikipedia does, so if you want to learn more, you should check out their [article about color blindness](#).

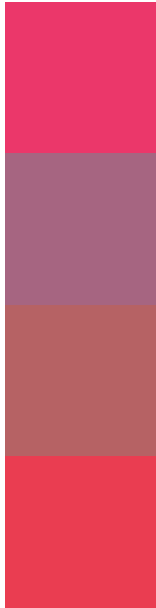
Dichromacy





Tritanopia
15286339

Trichromacy



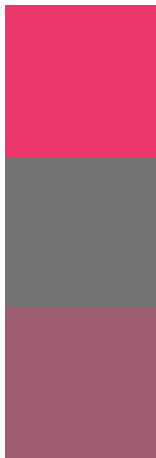
Original Color
15415146

Protanomaly
10904961

Deuteranomaly
11952740

Tritanomaly
15351121

Monochromacy



Original Color
15415146

Achromatopsia
7566195

Achromatomaly
10444144

CSS Examples

Text

The CSS property to change the color of the text to Decimal 15415146 is called "color". The color property can be set on classes, ids or directly on the HTML element.

This example shows how text in the color #EB376A looks like.

```
.text, #text, p{  
  color:#EB376A  
}
```

If you want to add a text shadow in that color use the text-shadow property, you can generate a text shadow directly with our [CSS Text Shadow Generator](#).

Here you see how black text with a 4 pixel #EB376A colored shadow looks like.

```
.shadow{ text-shadow: 4px 4px 2px #EB376A
}
```

Border

The CSS property to change the border of an element to Decimal 15415146 is called "border". The border property can be set on classes, ids or directly on the HTML element.

This example shows the color as border, it can be applied via the CSS property "border" or "border-color".

```
.border, #border, table{ border:4px solid
#EB376A }
```

If only the border color should be changed use the property `border-color`.

```
.border{ border-color:#EB376A }
```

If you want to add a box shadow in that color use:

Here you see how a box with a 4 pixel #EB376A colored shadow looks like.

```
.boxshadow{ -moz-box-shadow:4px 4px 4px  
4px #EB376A; -webkit-box-shadow:4px 4px  
4px 4px #EB376A; box-shadow:4px 4px 4px  
4px #EB376A }
```

Background

The CSS property to change the background color of an element to Decimal 15415146 is called "background". The background property can be set on classes, ids or directly on the HTML element.

```
.background, #background, body{  
background:#EB376A }
```

If only the background color should be changed can be used:

```
.background{ background-color:#EB376A }
```

This example shows the color as background, it is applied via the CSS property "background".

To optimize and compress your CSS code, you can use our [online CSS compressor and optimizer](#) based on csstidy. If you want to create a linear or radial gradient as background or border, check our [CSS Gradient Generator](#).

Hey! You found this booklet interesting? Support Converting Colors with the new Membership Option!

The pro membership hides all ads, plus gives you double the colors in the color bucket, and more awesome pro features!

[Learn more, Memberships starting at \\$2.50/m!](#)

**Follow me
on Twitter!**

@ConvertingColor