

# Converting Colors

Decimal(15419236)

Have a look what the booklet for  
Decimal(15419236) contains.

<b>Decimal(15419236)</b> .....	3
<i><b>Conversions</b></i> .....	4
<i><b>Details</b></i> .....	6
<i><b>Harmonies</b></i> .....	11
<i><b>Previews</b></i> .....	23
<i><b>Color Blindness Simulation</b></i> .....	26
<i><b>CSS Examples</b></i> .....	29

# Color

**Decimal(15419236)**

# Conversions

## Conversions Part 1

<b>Format</b>	<b>Color</b>
Hex	EB4764
RGB	235, 71, 100
RGB Percent	92%, 28%, 39%
CMY	0.0784, 0.7216, 0.6078
CMYK	0.00, 0.70, 0.57, 0.08
HSL	349°, 80%, 60%
HSV	349°, 70%, 92%
XYZ	38.8144, 23.0887, 14.4674
YIQ	123.3420, 88.4350, 43.7870

# Conversions

## Conversions Part 2

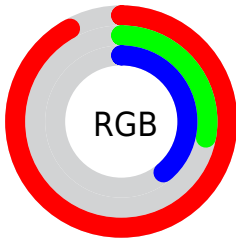
<b>Format</b>	<b>Color</b>
<b>R<sub>YB</sub></b>	235, 71, 100
Decimal	15419236
CIE <sub>Lab</sub>	55.16, 64.22, 20.64
CIE <sub>LCh</sub>	55, 67.451, 17.818
Yxy	23.0887, 0.5082, 0.3023
Android (android.graphics.Color)	4293609316 (0xFFEB4764)
YUV	123.3420, -11.5076, 97.9241
Hunter-Lab	48.0507, 60.0999, 15.7841

# Details

The Decimal color **15419236** is a dark color, and the websafe version is hex **FF3366**. The color can be described as middle muted rose. A complement of this color would be **4713422**, and the grayscale version is **8092539**.

A 20% lighter version of the original color is **16744855**, and **11337782** is the 20% darker color. If you saturate the color by 10%, you get **15413329**, and if you desaturate by 10%, it is **15425143**.

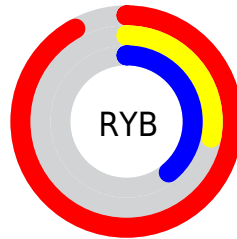
# Distribution



Red (92%)

Green (28%)

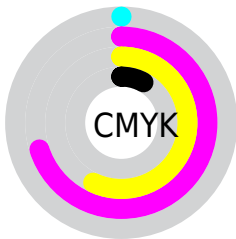
Blue (39%)



Red (92%)

Yellow (28%)

Blue (39%)

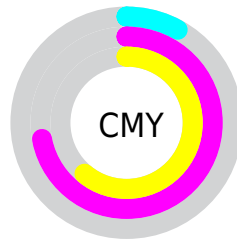


Cyan (0%)

Magenta (70%)

Yellow (57%)

Black (8%)



Cyan (8%)

Magenta (72%)

Yellow (61%)

# Brightness & Saturation Gradients

These gradients show how the Decimal color 15419236 changes by changing the brightness by 10 percent. The first figure shows a shift by +10% for each color and the second figure -10%.

Similar to the brightness gradients but the following saturation gradients show a change of the Decimal color 15419236 by changing the saturation by 10% instead.



 15419236

 15419236

16777215

 13378892

 16744855

 11337782

 16752305

 9306145

 16759757

 7340043

 16767209

 5373953

 16774911

 3407874

 65536

 0

 15419236

 15419236

 15413329

 15425143

 15407165

 15431307

 15401002

 15437214

 15443377

 15449285

 15455448

 15461611

 15466495

# Harmonies

## Analogous

The Analogous color harmony consists of three colors that are next to each other on the color wheel.



14698910



15419236



14245677

# Triad

The Triadic color harmony groups three colors that are evenly spaced from another and form a triangle on the color wheel.



15419236



3249966



37623

# Complementary

The Complementary color scheme is a pair of colors which are on the opposite of each other on the color wheel.



15419236



4713422

# Split Complementary

Split-complementary colors differ from the complementary color scheme. The scheme consists of three colors, the original color and two neighbors of the complement color.



40154



15419236



40297

# Square

The Square scheme is like the rectangle color scheme, but the four colors are evenly spaced on the color wheel.



15419236



8293376



40870



4816884

# Rectangle

The Rectangle color scheme consists of four colors that form a rectangle on the color wheel.



15419236



12677376



40870



38640



# Sweetspot

The Sweet Spot groups the original color and five complimentary colors.



15419236



16763347



13453291



8413285



0



8421504



# Same Dimension

The Same Dimension uses a secret algorithm to generate beautiful new colors.



15419236



16722255



15432519



7694956



11862048



3538953



# Inverse Universe

The Inverse Universe completely reimagines the original color for something new.



15419236



16722255



4700139



7694956



11862048



3538953



# Previews

## White Background



This preview shows how the Decimal color 15419236 looks on a white background.

## Color Contrast Check

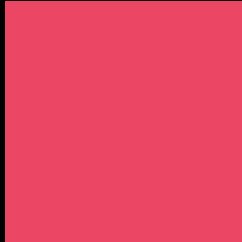
Large Text (above 18pt) WCAG AA ✓ Pass

Any Text WCAG AA × Fail

Large Text (above 18pt) WCAG AAA × Fail

Any Text WCAG AAA × Fail

# Black Background



This preview shows how the Decimal color 15419236 looks on a black background.

## Color Contrast Check

Large Text (above 18pt) WCAG AA ✓ Pass

Any Text WCAG AA ✓ Pass

Large Text (above 18pt) WCAG AAA ✓ Pass

Any Text WCAG AAA × Fail

If you want to check with other color combinations, try the [Color Contrast Checker](#).



## Decimal 15419236 Background



This preview shows how black text looks on a background with the Decimal color 15419236.



This preview shows how white text looks on a background with the Decimal color 15419236.

# Color Blindness Simulation

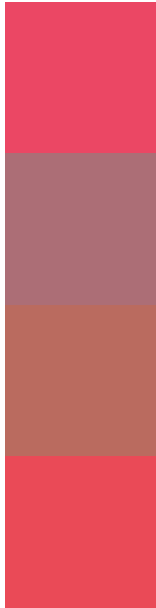
Color vision deficiency is a very complex topic, and I could not describe the different causes any better than Wikipedia does, so if you want to learn more, you should check out their [article about color blindness](#).

## Dichromacy





# Trichromacy



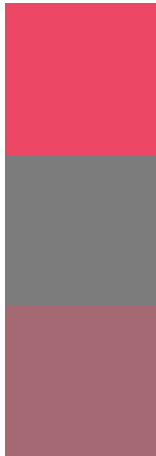
**Original Color**  
15419236

**Protanomaly**  
11300470

**Deuteranomaly**  
12217183

**Tritanomaly**  
15354455

# Monochromacy



**Original Color**  
15419236

**Achromatopsia**  
8092539

**Achromatomaly**  
10774643

# CSS Examples

## Text

The CSS property to change the color of the text to Decimal 15419236 is called "color". The color property can be set on classes, ids or directly on the HTML element.

This example shows how text in the color #EB4764 looks like.

```
.text, #text, p{  
    color:#EB4764  
}
```

If you want to add a text shadow in that color use the text-shadow property, you can generate a text shadow directly with our [CSS Text Shadow Generator](#).

Here you see how black text with a 4 pixel #EB4764 colored shadow looks like.

```
.shadow{ text-shadow: 4px 4px 2px #EB4764
}
```

## Border

The CSS property to change the border of an element to Decimal 15419236 is called "border". The border property can be set on classes, ids or directly on the HTML element.

This example shows the color as border, it can be applied via the CSS property "border" or "border-color".

```
.border, #border, table{ border:4px solid
#EB4764 }
```

If only the border color should be changed use the property `border-color`.

```
.border{ border-color:#EB4764 }
```

If you want to add a box shadow in that color use:

Here you see how a box with a 4 pixel #EB4764 colored shadow looks like.

```
.boxshadow{ -moz-box-shadow:4px 4px 4px  
4px #EB4764; -webkit-box-shadow:4px 4px  
4px 4px #EB4764; box-shadow:4px 4px 4px  
4px #EB4764 }
```

# Background

The CSS property to change the background color of an element to Decimal 15419236 is called "background". The background property can be set on classes, ids or directly on the HTML element.

```
.background, #background, body{  
background:#EB4764 }
```

If only the background color should be changed can be used:

```
.background{ background-color:#EB4764 }
```

This example shows the color as background, it is applied via the CSS property "background".

To optimize and compress your CSS code, you can use our [online CSS compressor and optimizer](#) based on csstidy. If you want to create a linear or radial gradient as background or border, check our [CSS Gradient Generator](#).



Hey! You found this booklet interesting? Support Converting Colors with the new Membership Option!

The pro membership hides all ads, plus gives you double the colors in the color bucket, and more awesome pro features!

**[Learn more, Memberships starting at \\$2.50/m!](#)**

**Follow me  
on Twitter!**

@ConvertingColor