

# Converting Colors

Decimal(15419507)

Have a look what the booklet for  
Decimal(15419507) contains.

<b>Decimal(15419507)</b> .....	3
<i><b>Conversions</b></i> .....	4
<i><b>Details</b></i> .....	6
<i><b>Harmonies</b></i> .....	11
<i><b>Previews</b></i> .....	23
<i><b>Color Blindness Simulation</b></i> .....	26
<i><b>CSS Examples</b></i> .....	29

**Color**

**Decimal(15419507)**

# Conversions

## Conversions Part 1

Format	Color
Hex	EB4873
RGB	235, 72, 115
RGB Percent	92%, 28%, 45%
CMY	0.0784, 0.7176, 0.5490
CMYK	0.00, 0.69, 0.51, 0.08
HSL	344°, 80%, 60%
HSV	344°, 69%, 92%
XYZ	39.6728, 23.5347, 18.6713
YIQ	125.6390, 83.3450, 47.9290

# Conversions

## Conversions Part 2

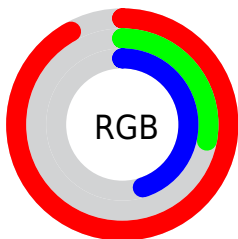
<b>Format</b>	<b>Color</b>
<b>R<sub>YB</sub></b>	235, 72, 115
Decimal	15419507
CIE <sub>Lab</sub>	55.62, 64.97, 12.37
CIE <sub>LCh</sub>	56, 66.135, 10.778
Yxy	23.5347, 0.4845, 0.2874
Android (android.graphics.Color)	4293609587 (0xFFEB4873)
YUV	125.6390, -5.2450, 95.9096
Hunter-Lab	48.5126, 61.0775, 11.1395

# Details

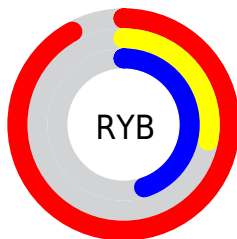
The Decimal color **15419507** is a dark color, and the websafe version is hex **CC3366**. The color can be described as middle muted rose. A complement of this color would be **4778944**, and the grayscale version is **8289918**.

A 20% lighter version of the original color is **16745383**, and **11337795** is the 20% darker color. If you saturate the color by 10%, you get **15413602**, and if you desaturate by 10%, it is **15425668**.

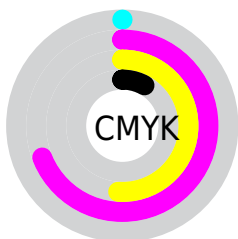
# Distribution



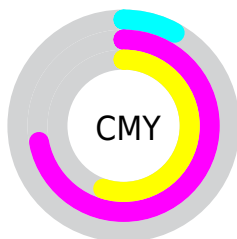
- Red (92%)
- Green (28%)
- Blue (45%)



- Red (92%)
- Yellow (28%)
- Blue (45%)



- Cyan (0%)
- Magenta (69%)
- Yellow (51%)
- Black (8%)



- Cyan (8%)
- Magenta (72%)
- Yellow (55%)

# Brightness & Saturation Gradients

These gradients show how the Decimal color 15419507 changes by changing the brightness by 10 percent. The first figure shows a shift by +10% for each color and the second figure -10%.

Similar to the brightness gradients but the following saturation gradients show a change of the Decimal color 15419507 by changing the saturation by 10% instead.




 15419507  15419507

16777215  13379163

 16745383  11337795

 16752578  9371694

 16760030  7405594

 16767738  5505025

 16775167  3538946

 524288

 0

 15419507  15419507

 15413602

 15425668

 15407440

 15431574

 15401535

 15437735

 15401022

 15443640

 15449546

 15455707

 15461612

 15466493

 15466495

# Harmonies

## Analogous

The Analogous color harmony consists of three colors that are next to each other on the color wheel.



14176684



15419507



14637885

# Triad

The Triadic color harmony groups three colors that are evenly spaced from another and form a triangle on the color wheel.



15419507



5019171



38642

# Complementary

The Complementary color scheme is a pair of colors which are on the opposite of each other on the color wheel.



15419507



4778944

# Split Complementary

Split-complementary colors differ from the complementary color scheme. The scheme consists of three colors, the original color and two neighbors of the complement color.



40655



15419507



40285

# Square

The Square scheme is like the rectangle color scheme, but the four colors are evenly spaced on the color wheel.



15419507



9275648



40857



34295

# Rectangle

The Rectangle color scheme consists of four colors that form a rectangle on the color wheel.



15419507



13331481



40857



39401



# Sweetspot

The Sweet Spot groups the original color and five complimentary colors.



15419507



16763352



12601579



8413288



0



8421504



# Same Dimension

The Same Dimension uses a secret algorithm to generate beautiful new colors.



15419507



16722787



15429192



7694957



11862064



3538958



# Inverse Universe

The Inverse Universe completely reimagines the original color for something new.



15419507



16722787



4769259



7694957



11862064



3538958



# Previews

## White Background



This preview shows how the Decimal color 15419507 looks on a white background.

## Color Contrast Check

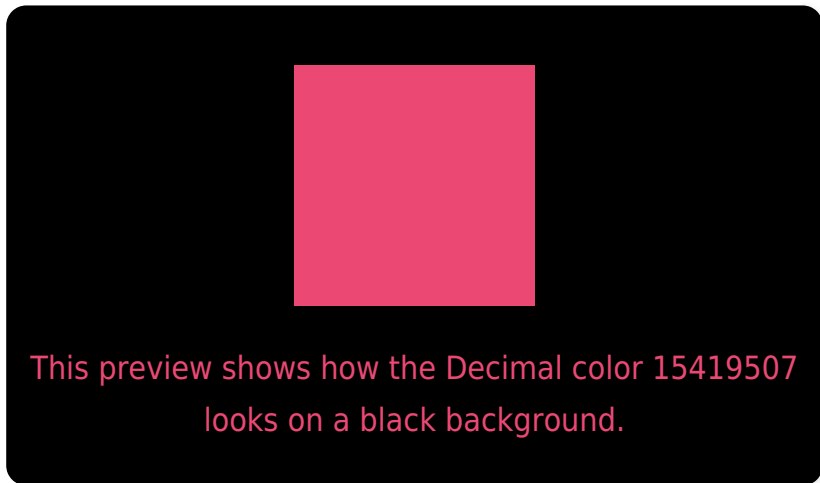
Large Text (above 18pt) WCAG AA ✓ Pass

Any Text WCAG AA × Fail

Large Text (above 18pt) WCAG AAA × Fail

Any Text WCAG AAA × Fail

# Black Background



## Color Contrast Check

Large Text (above 18pt) WCAG AA ✓ Pass

Any Text WCAG AA ✓ Pass

Large Text (above 18pt) WCAG AAA ✓ Pass

Any Text WCAG AAA × Fail

If you want to check with other color combinations, try the [Color Contrast Checker](#).



## Decimal 15419507 Background



This preview shows how black text looks on a background with the Decimal color 15419507.

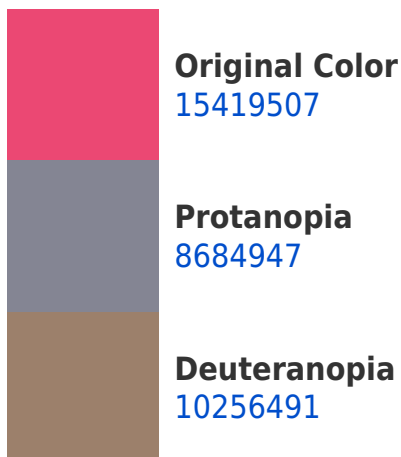


This preview shows how white text looks on a background with the Decimal color 15419507.

# Color Blindness Simulation

Color vision deficiency is a very complex topic, and I could not describe the different causes any better than Wikipedia does, so if you want to learn more, you should check out their [article about color blindness](#).

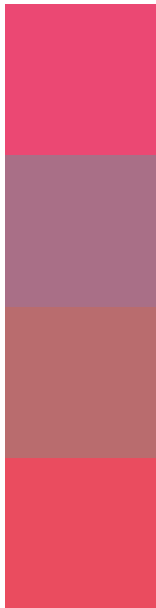
## Dichromacy





**Tritanopia**  
15290195

# Trichromacy



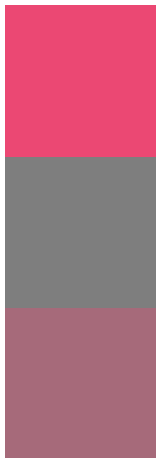
**Original Color**  
15419507

**Protanomaly**  
11104135

**Deuteranomaly**  
12151918

**Tritanomaly**  
15354975

# Monochromacy



**Original Color**  
15419507

**Achromatopsia**  
8289918

**Achromatomaly**  
10906234

# CSS Examples

## Text

The CSS property to change the color of the text to Decimal 15419507 is called "color". The color property can be set on classes, ids or directly on the HTML element.

This example shows how text in the color #EB4873 looks like.

```
.text, #text, p{  
    color:#EB4873  
}
```

If you want to add a text shadow in that color use the text-shadow property, you can generate a text shadow directly with our [CSS Text Shadow Generator](#).

Here you see how black text with a 4 pixel #EB4873 colored shadow looks like.

```
.shadow{ text-shadow: 4px 4px 2px #EB4873
}
```

## Border

The CSS property to change the border of an element to Decimal 15419507 is called "border". The border property can be set on classes, ids or directly on the HTML element.

This example shows the color as border, it can be applied via the CSS property "border" or "border-color".

```
.border, #border, table{ border:4px solid
#EB4873 }
```

If only the border color should be changed use the property `border-color`.

```
.border{ border-color:#EB4873 }
```

If you want to add a box shadow in that color use:

Here you see how a box with a 4 pixel #EB4873 colored shadow looks like.

```
.boxshadow{ -moz-box-shadow:4px 4px 4px  
4px #EB4873; -webkit-box-shadow:4px 4px  
4px 4px #EB4873; box-shadow:4px 4px 4px  
4px #EB4873 }
```

# Background

The CSS property to change the background color of an element to Decimal 15419507 is called "background". The background property can be set on classes, ids or directly on the HTML element.

```
.background, #background, body{  
background:#EB4873 }
```

If only the background color should be changed can be used:

```
.background{ background-color:#EB4873 }
```

This example shows the color as background, it is applied via the CSS property "background".

To optimize and compress your CSS code, you can use our [online CSS compressor and optimizer](#) based on csstidy. If you want to create a linear or radial gradient as background or border, check our [CSS Gradient Generator](#).



Hey! You found this booklet interesting? Support Converting Colors with the new Membership Option!

The pro membership hides all ads, plus gives you double the colors in the color bucket, and more awesome pro features!

**[Learn more, Memberships starting at \\$2.50/m!](#)**

**Follow me  
on Twitter!**

@ConvertingColor