

# Converting Colors

Decimal(15420805)

Have a look what the booklet for  
Decimal(15420805) contains.

<b>Decimal(15420805)</b> .....	3
<i><b>Conversions</b></i> .....	4
<i><b>Details</b></i> .....	6
<i><b>Harmonies</b></i> .....	11
<i><b>Previews</b></i> .....	23
<i><b>Color Blindness Simulation</b></i> .....	26
<i><b>CSS Examples</b></i> .....	29

# Color

**Decimal(15420805)**

# Conversions

## Conversions Part 1

<b>Format</b>	<b>Color</b>
Hex	EB4D85
RGB	235, 77, 133
RGB Percent	92%, 30%, 52%
CMY	0.0784, 0.6980, 0.4784
CMYK	0.00, 0.67, 0.43, 0.08
HSL	339°, 80%, 61%
HSV	339°, 67%, 92%
XYZ	41.1485, 24.6634, 24.7820
YIQ	130.6260, 76.1920, 50.9120

# Conversions

## Conversions Part 2

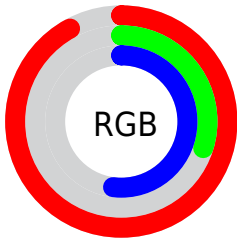
<b>Format</b>	<b>Color</b>
<b>R<sub>YB</sub></b>	235, 77, 133
Decimal	15420805
CIE <sub>Lab</sub>	56.75, 64.69, 3.31
CIE <sub>LCh</sub>	57, 64.771, 2.932
Yxy	24.6634, 0.4542, 0.2722
Android (android.graphics.Color)	4293610885 (0xFFEB4D85)
YUV	130.6260, 1.1704, 91.5360
Hunter-Lab	49.6622, 60.9902, 5.1772

# Details

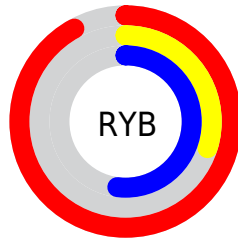
The Decimal color **15420805** is a dark color, and the websafe version is hex **FF6699**. The color can be described as middle muted rose. A complement of this color would be **5106611**, and the grayscale version is **8618883**.

A 20% lighter version of the original color is **16746426**, and **11403348** is the 20% darker color. If you saturate the color by 10%, you get **15414646**, and if you desaturate by 10%, it is **15426708**.

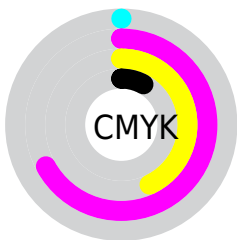
# Distribution



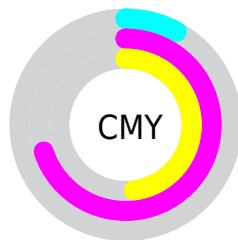
- Red (92%)
- Green (30%)
- Blue (52%)



- Red (92%)
- Yellow (30%)
- Blue (52%)



- Cyan (0%)
- Magenta (67%)
- Yellow (43%)
- Black (8%)



- Cyan (8%)
- Magenta (70%)
- Yellow (48%)

# Brightness & Saturation Gradients

These gradients show how the Decimal color 15420805 changes by changing the brightness by 10 percent. The first figure shows a shift by +10% for each color and the second figure -10%.

Similar to the brightness gradients but the following saturation gradients show a change of the Decimal color 15420805 by changing the saturation by 10% instead.



 15420805

 15420805

16777215

 13380972

 16746426

 11403348

 16753878

 9437245

 16761330

 7536679

 16768767

 5570579

 16776447

 3801090

 1179648

 0

 15420805

 15420805

15414646

15426708

15408743

15432867

15402583

15438771

15401043

15444930

15450833

15456992

15462895

15466494

15466495

# Harmonies

## Analogous

The Analogous color harmony consists of three colors that are next to each other on the color wheel.



13655229



15420805



15161678

# Triad

The Triadic color harmony groups three colors that are evenly spaced from another and form a triangle on the color wheel.



15420805



6592026



39916

# Complementary

The Complementary color scheme is a pair of colors which are on the opposite of each other on the color wheel.



15420805



5106611

# Split Complementary

Split-complementary colors differ from the complementary color scheme. The scheme consists of three colors, the original color and two neighbors of the complement color.



41412



15420805



40530

# Square

The Square scheme is like the rectangle color scheme, but the four colors are evenly spaced on the color wheel.



15420805



10389248



41612



36345

# Rectangle

The Rectangle color scheme consists of four colors that form a rectangle on the color wheel.



15420805



14051629



41612



40674



# Sweetspot

The Sweet Spot groups the original color and five complimentary colors.



15420805



16764126



11619819



8413548



0



8421504



# Same Dimension

The Same Dimension uses a secret algorithm to generate beautiful new colors.



15420805



16724090



15426125



7694958



11862080



3538963



# Inverse Universe

The Inverse Universe completely reimagines the original color for something new.



15420805



16724090



5101291



7694958



11862080



3538963



# Previews

## White Background



This preview shows how the Decimal color 15420805 looks on a white background.

## Color Contrast Check

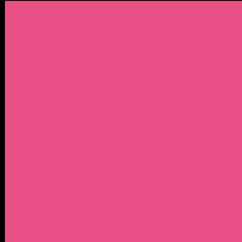
Large Text (above 18pt) WCAG AA ✓ Pass

Any Text WCAG AA × Fail

Large Text (above 18pt) WCAG AAA × Fail

Any Text WCAG AAA × Fail

# Black Background



This preview shows how the Decimal color 15420805 looks on a black background.

## Color Contrast Check

Large Text (above 18pt) WCAG AA ✓ Pass

Any Text WCAG AA ✓ Pass

Large Text (above 18pt) WCAG AAA ✓ Pass

Any Text WCAG AAA × Fail

If you want to check with other color combinations, try the [Color Contrast Checker](#).



## Decimal 15420805 Background



This preview shows how black text looks on a background with the Decimal color 15420805.



This preview shows how white text looks on a background with the Decimal color 15420805.

# Color Blindness Simulation

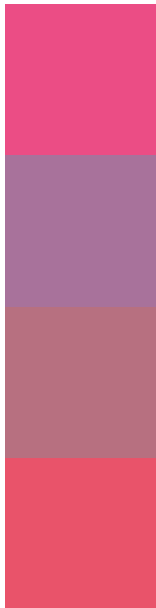
Color vision deficiency is a very complex topic, and I could not describe the different causes any better than Wikipedia does, so if you want to learn more, you should check out their [article about color blindness](#).

## Dichromacy





# Trichromacy



**Original Color**  
15420805

**Protanomaly**  
11039387

**Deuteranomaly**  
12021888

**Tritanomaly**  
15291242

# Monochromacy



**Original Color**  
15420805

**Achromatopsia**  
8618883

**Achromatomaly**  
11104132

# CSS Examples

## Text

The CSS property to change the color of the text to Decimal 15420805 is called "color". The color property can be set on classes, ids or directly on the HTML element.

This example shows how text in the color #EB4D85 looks like.

```
.text, #text, p{  
  color:#EB4D85  
}
```

If you want to add a text shadow in that color use the text-shadow property, you can generate a text shadow directly with our [CSS Text Shadow Generator](#).

Here you see how black text with a 4 pixel #EB4D85 colored shadow looks like.

```
.shadow{ text-shadow: 4px 4px 2px #EB4D85
}
```

## Border

The CSS property to change the border of an element to Decimal 15420805 is called "border". The border property can be set on classes, ids or directly on the HTML element.

This example shows the color as border, it can be applied via the CSS property "border" or "border-color".

```
.border, #border, table{ border:4px solid
#EB4D85 }
```

If only the border color should be changed use the property `border-color`.

```
.border{ border-color:#EB4D85 }
```

If you want to add a box shadow in that color use:

Here you see how a box with a 4 pixel #EB4D85 colored shadow looks like.

```
.boxshadow{ -moz-box-shadow:4px 4px 4px  
4px #EB4D85; -webkit-box-shadow:4px 4px  
4px 4px #EB4D85; box-shadow:4px 4px 4px  
4px #EB4D85 }
```

# Background

The CSS property to change the background color of an element to Decimal 15420805 is called "background". The background property can be set on classes, ids or directly on the HTML element.

```
.background, #background, body{  
background:#EB4D85 }
```

If only the background color should be changed can be used:

```
.background{ background-color:#EB4D85 }
```

This example shows the color as background, it is applied via the CSS property "background".

To optimize and compress your CSS code, you can use our [online CSS compressor and optimizer](#) based on csstidy. If you want to create a linear or radial gradient as background or border, check our [CSS Gradient Generator](#).



Hey! You found this booklet interesting? Support Converting Colors with the new Membership Option!

The pro membership hides all ads, plus gives you double the colors in the color bucket, and more awesome pro features!

**[Learn more, Memberships starting at \\$2.50/m!](#)**

**Follow me  
on Twitter!**

**@ConvertingColor**