

# Converting Colors

Decimal(15421325)

Have a look what the booklet for  
Decimal(15421325) contains.

<b>Decimal(15421325)</b> .....	3
<i><b>Conversions</b></i> .....	4
<i><b>Details</b></i> .....	6
<i><b>Harmonies</b></i> .....	11
<i><b>Previews</b></i> .....	23
<i><b>Color Blindness Simulation</b></i> .....	26
<i><b>CSS Examples</b></i> .....	29

# Color

**Decimal(15421325)**

# Conversions

## Conversions Part 1

<b>Format</b>	<b>Color</b>
Hex	EB4F8D
RGB	235, 79, 141
RGB Percent	92%, 31%, 55%
CMY	0.0784, 0.6902, 0.4471
CMYK	0.00, 0.66, 0.40, 0.08
HSL	336°, 80%, 62%
HSV	336°, 66%, 92%
XYZ	41.8647, 25.1772, 27.8525
YIQ	132.7120, 73.0740, 52.3540

# Conversions

## Conversions Part 2

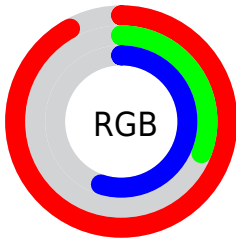
<b>Format</b>	<b>Color</b>
<b>R<sub>YB</sub></b>	235, 79, 141
Decimal	15421325
CIE <sub>Lab</sub>	57.25, 64.71, -0.67
CIE <sub>LCh</sub>	57, 64.709, 359.407
Yxy	25.1772, 0.4412, 0.2653
Android (android.graphics.Color)	4293611405 (0xFFEB4F8D)
YUV	132.7120, 4.0860, 89.7066
Hunter-Lab	50.1769, 61.1203, 2.2128

# Details

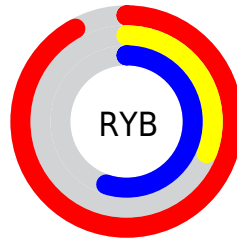
The Decimal color **15421325** is a dark color, and the websafe version is hex **FF6699**. The color can be described as middle muted rose. A complement of this color would be **5237677**, and the grayscale version is **8750469**.

A 20% lighter version of the original color is **16746946**, and **11403355** is the 20% darker color. If you saturate the color by 10%, you get **15415423**, and if you desaturate by 10%, it is **15427483**.

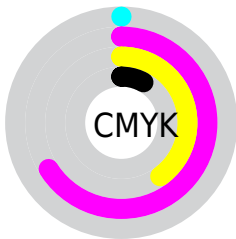
# Distribution



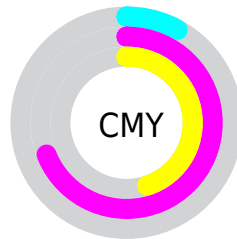
- Red (92%)
- Green (31%)
- Blue (55%)



- Red (92%)
- Yellow (31%)
- Blue (55%)



- Cyan (0%)
- Magenta (66%)
- Yellow (40%)
- Black (8%)



- Cyan (8%)
- Magenta (69%)
- Yellow (45%)

# Brightness & Saturation Gradients

These gradients show how the Decimal color 15421325 changes by changing the brightness by 10 percent. The first figure shows a shift by +10% for each color and the second figure -10%.

Similar to the brightness gradients but the following saturation gradients show a change of the Decimal color 15421325 by changing the saturation by 10% instead.



 15421325

 15421325

16777215

 13381492

 16746946

 11403355

 16754398

 9502788

 16761851

 7536686

 16769279

 5636121

16776959

 3932163

 1376256

 0

 15421325

 15421325

 15415423

 15427483

 15409265

 15433385

 15403363

 15439287

 15401053

 15445446

 15451604

 15457506

 15463664

 15466494

 15466495

# Harmonies

## Analogous

The Analogous color harmony consists of three colors that are next to each other on the color wheel.



13394116



15421325



15358037

# Triad

The Triadic color harmony groups three colors that are evenly spaced from another and form a triangle on the color wheel.



15421325



7181845



40682

# Complementary

The Complementary color scheme is a pair of colors which are on the opposite of each other on the color wheel.



15421325



5237677

# Split Complementary

Split-complementary colors differ from the complementary color scheme. The scheme consists of three colors, the original color and two neighbors of the complement color.



41920



15421325



40780

# Square

The Square scheme is like the rectangle color scheme, but the four colors are evenly spaced on the color wheel.



15421325



10847744



41863



37371

# Rectangle

The Rectangle color scheme consists of four colors that form a rectangle on the color wheel.



15421325



14379060



41863



41182



# Sweetspot

The Sweet Spot groups the original color and five complimentary colors.



15421325



16764128



11358187



8413549



0



8421504



# Same Dimension

The Same Dimension uses a secret algorithm to generate beautiful new colors.



15421325



16724868



15425359



7694958



11862088



3538965



# Inverse Universe

The Inverse Universe completely reimagines the original color for something new.



15421325



16724868



5233643



7694958



11862088



3538965



# Previews

## White Background



This preview shows how the Decimal color 15421325 looks on a white background.

## Color Contrast Check

Large Text (above 18pt) WCAG AA ✓ Pass

Any Text WCAG AA × Fail

Large Text (above 18pt) WCAG AAA × Fail

Any Text WCAG AAA × Fail

# Black Background



This preview shows how the Decimal color 15421325 looks on a black background.

## Color Contrast Check

Large Text (above 18pt) WCAG AA ✓ Pass

Any Text WCAG AA ✓ Pass

Large Text (above 18pt) WCAG AAA ✓ Pass

Any Text WCAG AAA × Fail

If you want to check with other color combinations, try the [Color Contrast Checker](#).



## Decimal 15421325 Background



This preview shows how black text looks on a background with the Decimal color 15421325.




This preview shows how white text looks on a background with the Decimal color 15421325.

# Color Blindness Simulation

Color vision deficiency is a very complex topic, and I could not describe the different causes any better than Wikipedia does, so if you want to learn more, you should check out their [article about color blindness](#).

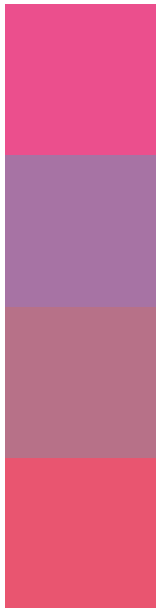
## Dichromacy





**Tritanopia**  
15227231

# Trichromacy



**Original Color**  
15421325

**Protanomaly**  
10974116

**Deuteranomaly**  
12022152

**Tritanomaly**  
15291760

# Monochromacy



**Original Color**  
15421325

**Achromatopsia**  
8750469

**Achromatomaly**  
11170184

# CSS Examples

## Text

The CSS property to change the color of the text to Decimal 15421325 is called "color". The color property can be set on classes, ids or directly on the HTML element.

This example shows how text in the color #EB4F8D looks like.

```
.text, #text, p{  
  color:#EB4F8D  
}
```

If you want to add a text shadow in that color use the text-shadow property, you can generate a text shadow directly with our [CSS Text Shadow Generator](#).

Here you see how black text with a 4 pixel #EB4F8D colored shadow looks like.

```
.shadow{ text-shadow: 4px 4px 2px #EB4F8D
}
```

## Border

The CSS property to change the border of an element to Decimal 15421325 is called "border". The border property can be set on classes, ids or directly on the HTML element.

This example shows the color as border, it can be applied via the CSS property "border" or "border-color".

```
.border, #border, table{ border:4px solid
#EB4F8D }
```

If only the border color should be changed use the property `border-color`.

```
.border{ border-color:#EB4F8D }
```

If you want to add a box shadow in that color use:

Here you see how a box with a 4 pixel #EB4F8D colored shadow looks like.

```
.boxshadow{ -moz-box-shadow:4px 4px 4px  
4px #EB4F8D; -webkit-box-shadow:4px 4px  
4px 4px #EB4F8D; box-shadow:4px 4px 4px  
4px #EB4F8D }
```

# Background

The CSS property to change the background color of an element to Decimal 15421325 is called "background". The background property can be set on classes, ids or directly on the HTML element.

```
.background, #background, body{  
background:#EB4F8D }
```

If only the background color should be changed can be used:

```
.background{ background-color:#EB4F8D }
```

This example shows the color as background, it is applied via the CSS property "background".

To optimize and compress your CSS code, you can use our [online CSS compressor and optimizer](#) based on csstidy. If you want to create a linear or radial gradient as background or border, check our [CSS Gradient Generator](#).



Hey! You found this booklet interesting? Support Converting Colors with the new Membership Option!

The pro membership hides all ads, plus gives you double the colors in the color bucket, and more awesome pro features!

**[Learn more, Memberships starting at \\$2.50/m!](#)**

**Follow me  
on Twitter!**

@ConvertingColor