

# Converting Colors

Decimal(15423119)

Have a look what the booklet for  
Decimal(15423119) contains.

<b>Decimal(15423119)</b> .....	3
<i><b>Conversions</b></i> .....	4
<i><b>Details</b></i> .....	6
<i><b>Harmonies</b></i> .....	11
<i><b>Previews</b></i> .....	23
<i><b>Color Blindness Simulation</b></i> .....	26
<i><b>CSS Examples</b></i> .....	29

# **Color**

**Decimal(15423119)**

# Conversions

## Conversions Part 1

Format	Color
Hex	EB568F
RGB	235, 86, 143
RGB Percent	92%, 34%, 56%
CMY	0.0784, 0.6627, 0.4392
CMYK	0.00, 0.63, 0.39, 0.08
HSL	337°, 79%, 63%
HSV	337°, 63%, 92%
XYZ	42.5467, 26.3009, 28.8207
YIQ	137.0490, 70.5070, 49.3150

# Conversions

## Conversions Part 2

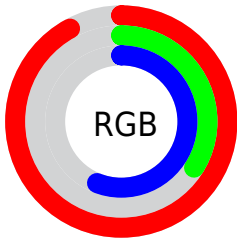
Format	Color
R <sub>Y</sub> B	235, 86, 143
Decimal	15423119
CIE Lab	58.32, 62.13, -0.27
CIE LCh	58, 62.132, 359.748
Yxy	26.3009, 0.4356, 0.2693
Android (android.graphics.Color)	4293613199 (0xFFEB568F)
YUV	137.0490, 2.9338, 85.9030
Hunter-Lab	51.2844, 58.3397, 2.5794

# Details

The Decimal color **15423119** is a light color, and the websafe version is hex **FF6699**. The color can be described as light muted rose. A complement of this color would be **5696434**, and the grayscale version is **9013641**.

A 20% lighter version of the original color is **16748485**, and **11473245** is the 20% darker color. If you saturate the color by 10%, you get **15417216**, and if you desaturate by 10%, it is **15429278**.

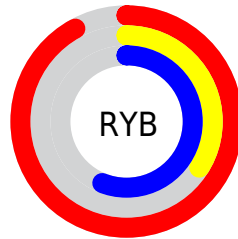
# Distribution



Red (92%)

Green (34%)

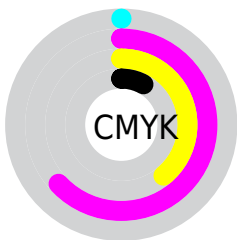
Blue (56%)



Red (92%)

Yellow (34%)

Blue (56%)

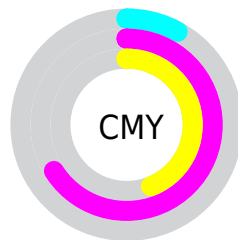


Cyan (0%)

Magenta (63%)

Yellow (39%)

Black (8%)



Cyan (8%)

Magenta (66%)

Yellow (44%)

# Brightness & Saturation Gradients

These gradients show how the Decimal color 15423119 changes by changing the brightness by 10 percent. The first figure shows a shift by +10% for each color and the second figure -10%.

Similar to the brightness gradients but the following saturation gradients show a change of the Decimal color 15423119 by changing the saturation by 10% instead.



 15423119

 15423119

16777215

 13449333

 16748485

 11473245

 16755681

 9502790

 16763133

 7602223

 16770815

 5701659

 3997699

 1572865

 0

 15423119

 15423119

 15417216

 15429278

 15411058

 15435180

 15405155

 15441339

 15401050

 15447241

 15453400

 15459302

 15465461

 15466495

# Harmonies

## Analogous

The Analogous color harmony consists of three colors that are next to each other on the color wheel.



13460932



15423119



15359578

# Triad

The Triadic color harmony groups three colors that are evenly spaced from another and form a triangle on the color wheel.



15423119



7444769



41194

# Complementary

The Complementary color scheme is a pair of colors which are on the opposite of each other on the color wheel.



15423119



5696434

# Split Complementary

Split-complementary colors differ from the complementary color scheme. The scheme consists of three colors, the original color and two neighbors of the complement color.



42433



15423119



368978

# Square

The Square scheme is like the rectangle color scheme, but the four colors are evenly spaced on the color wheel.



15423119



10979590



42378



37881

# Rectangle

The Rectangle color scheme consists of four colors that form a rectangle on the color wheel.



15423119



14445626



42378



41694



# Sweetspot

The Sweet Spot groups the original color and five complimentary colors.



15423119



16764897



11687659



8413805



0



8421504



# Same Dimension

The Same Dimension uses a secret algorithm to generate beautiful new colors.



15423119



16727431



15427414



7694958



11862085



3538964



# Inverse Universe

The Inverse Universe completely reimagines the original color for something new.



15423119



16727431



5692139



7694958



11862085

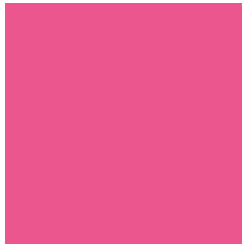


3538964



# Previews

## White Background



This preview shows how the Decimal color 15423119 looks on a white background.

## Color Contrast Check

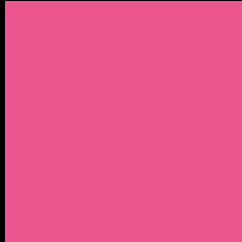
Large Text (above 18pt) WCAG AA ✓ Pass

Any Text WCAG AA × Fail

Large Text (above 18pt) WCAG AAA × Fail

Any Text WCAG AAA × Fail

# Black Background



This preview shows how the Decimal color 15423119 looks on a black background.

## Color Contrast Check

Large Text (above 18pt) WCAG AA ✓ Pass

Any Text WCAG AA ✓ Pass

Large Text (above 18pt) WCAG AAA ✓ Pass

Any Text WCAG AAA × Fail

If you want to check with other color combinations, try the [Color Contrast Checker](#).



## Decimal 15423119 Background



This preview shows how black text looks on a background with the Decimal color 15423119.



This preview shows how white text looks on a background with the Decimal color 15423119.

# Color Blindness Simulation

Color vision deficiency is a very complex topic, and I could not describe the different causes any better than Wikipedia does, so if you want to learn more, you should check out their [article about color blindness](#).

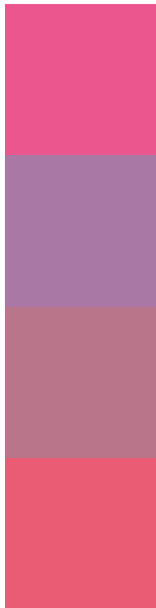
## Dichromacy





**Tritanopia**  
15228773

# Trichromacy



**Original Color**  
15423119

**Protanomaly**  
11106468

**Deuteranomaly**  
12154507

**Tritanomaly**  
15293556

# Monochromacy



**Original Color**  
15423119

**Achromatopsia**  
9013641

**Achromatomaly**  
11368075

# CSS Examples

## Text

The CSS property to change the color of the text to Decimal 15423119 is called "color". The color property can be set on classes, ids or directly on the HTML element.

This example shows how text in the color #EB568F looks like.

```
.text, #text, p{  
    color:#EB568F  
}
```

If you want to add a text shadow in that color use the text-shadow property, you can generate a text shadow directly with our [CSS Text Shadow Generator](#).

Here you see how black text with a 4 pixel #EB568F colored shadow looks like.

```
.shadow{ text-shadow: 4px 4px 2px #EB568F
}
```

## Border

The CSS property to change the border of an element to Decimal 15423119 is called "border". The border property can be set on classes, ids or directly on the HTML element.

This example shows the color as border, it can be applied via the CSS property "border" or "border-color".

```
.border, #border, table{ border:4px solid
#EB568F }
```

If only the border color should be changed use the property `border-color`.

```
.border{ border-color:#EB568F }
```

If you want to add a box shadow in that color use:

Here you see how a box with a 4 pixel #EB568F colored shadow looks like.

```
.boxshadow{ -moz-box-shadow:4px 4px 4px  
4px #EB568F; -webkit-box-shadow:4px 4px  
4px 4px #EB568F; box-shadow:4px 4px 4px  
4px #EB568F }
```

# Background

The CSS property to change the background color of an element to Decimal 15423119 is called "background". The background property can be set on classes, ids or directly on the HTML element.

```
.background, #background, body{  
background:#EB568F }
```

If only the background color should be changed can be used:

```
.background{ background-color:#EB568F }
```

This example shows the color as background, it is applied via the CSS property "background".

To optimize and compress your CSS code, you can use our [online CSS compressor and optimizer](#) based on csstidy. If you want to create a linear or radial gradient as background or border, check our [CSS Gradient Generator](#).



Hey! You found this booklet interesting? Support Converting Colors with the new Membership Option!

The pro membership hides all ads, plus gives you double the colors in the color bucket, and more awesome pro features!

**[Learn more, Memberships starting at \\$2.50/m!](#)**

**Follow me  
on Twitter!**

@ConvertingColor