

Converting Colors

Decimal(15426696)

Have a look what the booklet for
Decimal(15426696) contains.

Decimal(15426696)	3
<i>Conversions</i>	4
<i>Details</i>	6
<i>Harmonies</i>	11
<i>Previews</i>	23
<i>Color Blindness Simulation</i>	26
<i>CSS Examples</i>	29

Color

Decimal(15426696)

Conversions

Conversions Part 1

Format	Color
Hex	EB6488
RGB	235, 100, 136
RGB Percent	92%, 39%, 53%
CMY	0.0784, 0.6078, 0.4667
CMYK	0.00, 0.57, 0.42, 0.08
HSL	344°, 77%, 66%
HSV	344°, 57%, 92%
XYZ	43.2621, 28.5541, 26.5239
YIQ	144.4690, 68.9040, 39.8160

Conversions

Conversions Part 2

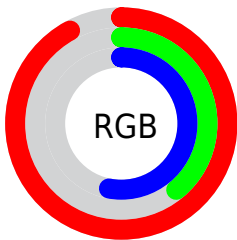
Format	Color
R _Y B	235, 100, 136
Decimal	15426696
CIE Lab	60.39, 55.36, 6.79
CIE LCh	60, 55.780, 6.994
Yxy	28.5541, 0.4399, 0.2904
Android (android.graphics.Color)	4293616776 (0xFFEB6488)
YUV	144.4690, -4.1752, 79.3957
Hunter-Lab	53.4360, 51.0014, 7.9756

Details

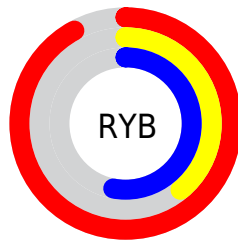
The Decimal color **15426696** is a light color, and the websafe version is hex **FF6699**. A complement of this color would be **6613959**, and the grayscale version is **9474192**.

A 20% lighter version of the original color is **16751549**, and **11479895** is the 20% darker color. If you saturate the color by 10%, you get **15420791**, and if you desaturate by 10%, it is **15432857**.

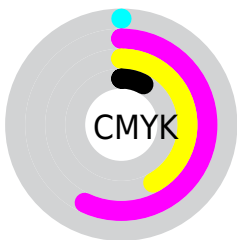
Distribution



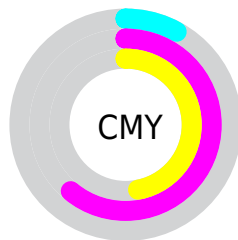
- Red (92%)
- Green (39%)
- Blue (53%)



- Red (92%)
- Yellow (39%)
- Blue (53%)



- Cyan (0%)
- Magenta (57%)
- Yellow (42%)
- Black (8%)



- Cyan (8%)
- Magenta (61%)
- Yellow (47%)

Brightness & Saturation Gradients

These gradients show how the Decimal color 15426696 changes by changing the brightness by 10 percent. The first figure shows a shift by +10% for each color and the second figure -10%.

Similar to the brightness gradients but the following saturation gradients show a change of the Decimal color 15426696 by changing the saturation by 10% instead.

 15426696

 15426696

16777215

 13453423

 16751549

 11479895

 16759001

 9502783

 16766453

 7602218

 16773887

 5767190

 4063235

 1769473

 0

 15426696

 15426696

 15420791

 15432857

 15414630

 15438762

 15408724

 15444924

 15402563

 15450829

 15401023

 15456990

 15462895

 15466495

Harmonies

Analogous

The Analogous color harmony consists of three colors that are next to each other on the color wheel.



14052537



15426696



15035993

Triad

The Triadic color harmony groups three colors that are evenly spaced from another and form a triangle on the color wheel.



15426696



7184190



41452

Complementary

The Complementary color scheme is a pair of colors which are on the opposite of each other on the color wheel.



15426696



6613959

Split Complementary

Split-complementary colors differ from the complementary color scheme. The scheme consists of three colors, the original color and two neighbors of the complement color.



43212



15426696



42857

Square

The Square scheme is like the rectangle color scheme, but the four colors are evenly spaced on the color wheel.



15426696



10588967



43420



4232179

Rectangle

The Rectangle color scheme consists of four colors that form a rectangle on the color wheel.



15426696



13990719



43420



42211

Sweetspot

The Sweet Spot groups the original color and five complimentary colors.



15426696



16766175



13067499



8414829



0



8421504

Same Dimension

The Same Dimension uses a secret algorithm to generate beautiful new colors.



15426696



16732030



15434852



7694957



11862064



3538958

Inverse Universe

The Inverse Universe completely reimagines the original color for something new.



15426696



16732030



6605803



7694957



11862064



3538958

Previews

White Background



This preview shows how the Decimal color 15426696 looks on a white background.

Color Contrast Check

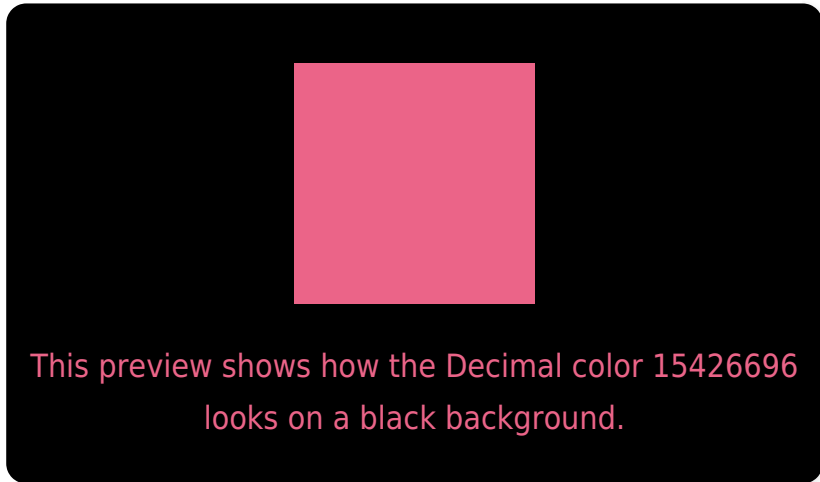
Large Text (above 18pt) WCAG AA ✓ Pass

Any Text WCAG AA × Fail

Large Text (above 18pt) WCAG AAA × Fail

Any Text WCAG AAA × Fail

Black Background



Color Contrast Check

Large Text (above 18pt) WCAG AA ✓ Pass

Any Text WCAG AA ✓ Pass

Large Text (above 18pt) WCAG AAA ✓ Pass

Any Text WCAG AAA × Fail

If you want to check with other color combinations, try the [Color Contrast Checker](#).

Decimal 15426696 Background



This preview shows how black text looks on a background with the Decimal color 15426696.




This preview shows how white text looks on a background with the Decimal color 15426696.

Color Blindness Simulation

Color vision deficiency is a very complex topic, and I could not describe the different causes any better than Wikipedia does, so if you want to learn more, you should check out their [article about color blindness](#).

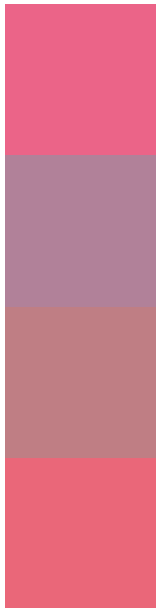
Dichromacy





Tritanopia
15296880

Trichromacy



Original Color
15426696

Protanomaly
11633049

Deuteranomaly
12549764

Tritanomaly
15361913

Monochromacy



Original Color
15426696

Achromatopsia
9474192

Achromatomaly
11632781

CSS Examples

Text

The CSS property to change the color of the text to Decimal 15426696 is called "color". The color property can be set on classes, ids or directly on the HTML element.

This example shows how text in the color #EB6488 looks like.

```
.text, #text, p{  
    color:#EB6488  
}
```

If you want to add a text shadow in that color use the text-shadow property, you can generate a text shadow directly with our [CSS Text Shadow Generator](#).

Here you see how black text with a 4 pixel #EB6488 colored shadow looks like.

```
.shadow{ text-shadow: 4px 4px 2px #EB6488
}
```

Border

The CSS property to change the border of an element to Decimal 15426696 is called "border". The border property can be set on classes, ids or directly on the HTML element.

This example shows the color as border, it can be applied via the CSS property "border" or "border-color".

```
.border, #border, table{ border:4px solid
#EB6488 }
```

If only the border color should be changed use the property `border-color`.

```
.border{ border-color:#EB6488 }
```

If you want to add a box shadow in that color use:

Here you see how a box with a 4 pixel #EB6488 colored shadow looks like.

```
.boxshadow{ -moz-box-shadow:4px 4px 4px  
4px #EB6488; -webkit-box-shadow:4px 4px  
4px 4px #EB6488; box-shadow:4px 4px 4px  
4px #EB6488 }
```

Background

The CSS property to change the background color of an element to Decimal 15426696 is called "background". The background property can be set on classes, ids or directly on the HTML element.

```
.background, #background, body{  
background:#EB6488 }
```

If only the background color should be changed can be used:

```
.background{ background-color:#EB6488 }
```

This example shows the color as background, it is applied via the CSS property "background".

To optimize and compress your CSS code, you can use our [online CSS compressor and optimizer](#) based on csstidy. If you want to create a linear or radial gradient as background or border, check our [CSS Gradient Generator](#).

Hey! You found this booklet interesting? Support Converting Colors with the new Membership Option!

The pro membership hides all ads, plus gives you double the colors in the color bucket, and more awesome pro features!

[Learn more, Memberships starting at \\$2.50/m!](#)

**Follow me
on Twitter!**

@ConvertingColor