

Converting Colors

Decimal(15426961)

Have a look what the booklet for
Decimal(15426961) contains.

Decimal(15426961)	3
<i>Conversions</i>	4
<i>Details</i>	6
<i>Harmonies</i>	11
<i>Previews</i>	23
<i>Color Blindness Simulation</i>	26
<i>CSS Examples</i>	29

Color

Decimal(15426961)

Conversions

Conversions Part 1

Format	Color
Hex	EB6591
RGB	235, 101, 145
RGB Percent	92%, 40%, 57%
CMY	0.0784, 0.6039, 0.4314
CMYK	0.00, 0.57, 0.38, 0.08
HSL	340°, 77%, 66%
HSV	340°, 57%, 92%
XYZ	44.0255, 29.0139, 30.0679
YIQ	146.0820, 65.7400, 42.0920

Conversions

Conversions Part 2

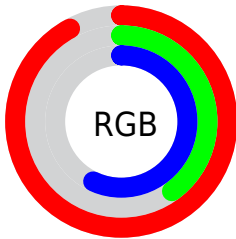
Format	Color
RYB	235, 101, 145
Decimal	15426961
CIELab	60.79, 55.86, 2.16
CIELCh	61, 55.898, 2.218
Yxy	29.0139, 0.4270, 0.2814
Android (android.graphics.Color)	4293617041 (0xFFEB6591)
YUV	146.0820, -0.5334, 77.9811
Hunter-Lab	53.8645, 51.6318, 4.6087

Details

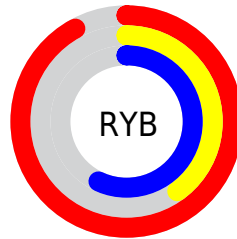
The Decimal color **15426961** is a light color, and the websafe version is hex **FF6699**. A complement of this color would be **6679487**, and the grayscale version is **9605778**.

A 20% lighter version of the original color is **16752071**, and **11480159** is the 20% darker color. If you saturate the color by 10%, you get **15421057**, and if you desaturate by 10%, it is **15433121**.

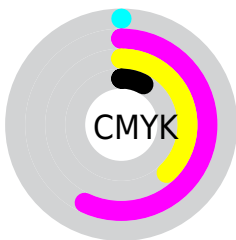
Distribution



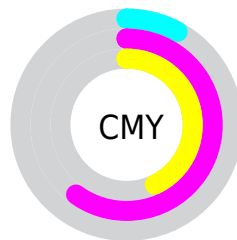
- Red (92%)
- Green (40%)
- Blue (57%)



- Red (92%)
- Yellow (40%)
- Blue (57%)



- Cyan (0%)
- Magenta (57%)
- Yellow (38%)
- Black (8%)



- Cyan (8%)
- Magenta (60%)
- Yellow (43%)

Brightness & Saturation Gradients

These gradients show how the Decimal color 15426961 changes by changing the brightness by 10 percent. The first figure shows a shift by +10% for each color and the second figure -10%.

Similar to the brightness gradients but the following saturation gradients show a change of the Decimal color 15426961 by changing the saturation by 10% instead.

 15426961

 15426961

16777215

 13453687

 16752071

 11480159

 16759267

 9568327

 16766719

 7667761

 16774143

 5832732

 4194306

 1966081

 0

 15426961

 15426961

15421057

15433121

15414897

15439025

15408994

15445184

15402834

15451088

15401037

15457248

15463152

15466495

Harmonies

Analogous

The Analogous color harmony consists of three colors that are next to each other on the color wheel.



13725890



15426961



15297889

Triad

The Triadic color harmony groups three colors that are evenly spaced from another and form a triangle on the color wheel.



15426961



7839545



42217

Complementary

The Complementary color scheme is a pair of colors which are on the opposite of each other on the color wheel.



15426961



6679487

Split Complementary

Split-complementary colors differ from the complementary color scheme. The scheme consists of three colors, the original color and two neighbors of the complement color.



43718



15426961



2729826

Square

The Square scheme is like the rectangle color scheme, but the four colors are evenly spaced on the color wheel.



15426961



11178279



43669



1939445

Rectangle

The Rectangle color scheme consists of four colors that form a rectangle on the color wheel.



15426961



14383173



43669



42720

Sweetspot

The Sweet Spot groups the original color and five complimentary colors.



15426961



16766178



12477931



8414830



0



8421504

Same Dimension

The Same Dimension uses a secret algorithm to generate beautiful new colors.



15426961



16732811



15432549



7694957



11862075



3538962

Inverse Universe

The Inverse Universe completely reimagines the original color for something new.



15426961



16732811



6673899



7694957



11862075



3538962

Previews

White Background



This preview shows how the Decimal color 15426961 looks on a white background.

Color Contrast Check

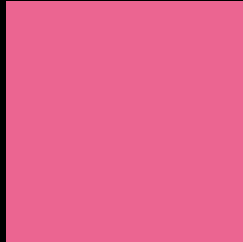
Large Text (above 18pt) WCAG AA ✓ Pass

Any Text WCAG AA × Fail

Large Text (above 18pt) WCAG AAA × Fail

Any Text WCAG AAA × Fail

Black Background



This preview shows how the Decimal color 15426961 looks on a black background.

Color Contrast Check

Large Text (above 18pt) WCAG AA ✓ Pass

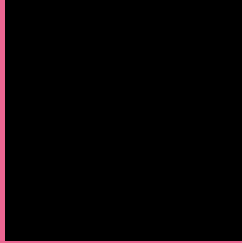
Any Text WCAG AA ✓ Pass

Large Text (above 18pt) WCAG AAA ✓ Pass

Any Text WCAG AAA × Fail

If you want to check with other color combinations, try the [Color Contrast Checker](#).

Decimal 15426961 Background



This preview shows how black text looks on a background with the Decimal color 15426961.




This preview shows how white text looks on a background with the Decimal color 15426961.

Color Blindness Simulation

Color vision deficiency is a very complex topic, and I could not describe the different causes any better than Wikipedia does, so if you want to learn more, you should check out their [article about color blindness](#).

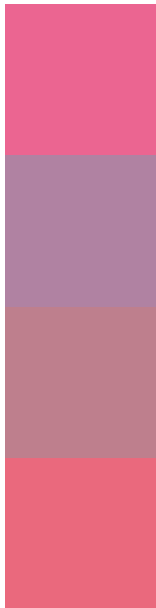
Dichromacy





Tritanopia
15297394

Trichromacy



Original Color
15426961

Protanomaly
11567778

Deuteranomaly
12484493

Tritanomaly
15362429

Monochromacy



Original Color
15426961

Achromatopsia
9605778

Achromatomaly
11698834

CSS Examples

Text

The CSS property to change the color of the text to Decimal 15426961 is called "color". The color property can be set on classes, ids or directly on the HTML element.

This example shows how text in the color #EB6591 looks like.

```
.text, #text, p{  
    color:#EB6591  
}
```

If you want to add a text shadow in that color use the text-shadow property, you can generate a text shadow directly with our [CSS Text Shadow Generator](#).

Here you see how black text with a 4 pixel #EB6591 colored shadow looks like.

```
.shadow{ text-shadow: 4px 4px 2px #EB6591
}
```

Border

The CSS property to change the border of an element to Decimal 15426961 is called "border". The border property can be set on classes, ids or directly on the HTML element.

This example shows the color as border, it can be applied via the CSS property "border" or "border-color".

```
.border, #border, table{ border:4px solid
#EB6591 }
```

If only the border color should be changed use the property `border-color`.

```
.border{ border-color:#EB6591 }
```

If you want to add a box shadow in that color use:

Here you see how a box with a 4 pixel #EB6591 colored shadow looks like.

```
.boxshadow{ -moz-box-shadow:4px 4px 4px  
4px #EB6591; -webkit-box-shadow:4px 4px  
4px 4px #EB6591; box-shadow:4px 4px 4px  
4px #EB6591 }
```

Background

The CSS property to change the background color of an element to Decimal 15426961 is called "background". The background property can be set on classes, ids or directly on the HTML element.

```
.background, #background, body{  
background:#EB6591 }
```

If only the background color should be changed can be used:

```
.background{ background-color:#EB6591 }
```

This example shows the color as background, it is applied via the CSS property "background".

To optimize and compress your CSS code, you can use our [online CSS compressor and optimizer](#) based on csstidy. If you want to create a linear or radial gradient as background or border, check our [CSS Gradient Generator](#).

Hey! You found this booklet interesting? Support Converting Colors with the new Membership Option!

The pro membership hides all ads, plus gives you double the colors in the color bucket, and more awesome pro features!

[Learn more, Memberships starting at \\$2.50/m!](#)

**Follow me
on Twitter!**

@ConvertingColor