

# Converting Colors

Decimal(15430806)

Have a look what the booklet for  
Decimal(15430806) contains.

<b>Decimal(15430806)</b> .....	3
<i><b>Conversions</b></i> .....	4
<i><b>Details</b></i> .....	6
<i><b>Harmonies</b></i> .....	11
<i><b>Previews</b></i> .....	23
<i><b>Color Blindness Simulation</b></i> .....	26
<i><b>CSS Examples</b></i> .....	29

# **Color**

**Decimal(15430806)**

# Conversions

## Conversions Part 1

Format	Color
Hex	EB7496
RGB	235, 116, 150
RGB Percent	92%, 45%, 59%
CMY	0.0784, 0.5451, 0.4118
CMYK	0.00, 0.51, 0.36, 0.08
HSL	343°, 75%, 69%
HSV	343°, 51%, 92%
XYZ	46.0114, 32.3550, 32.6742
YIQ	155.4570, 60.0100, 35.8020

# Conversions

## Conversions Part 2

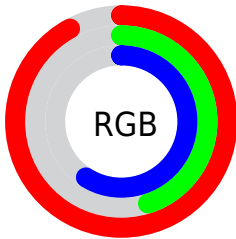
Format	Color
R <sub>Y</sub> B	235, 116, 150
Decimal	15430806
CIE Lab	63.64, 49.34, 3.40
CIE LCh	64, 49.458, 3.945
Yxy	32.3550, 0.4144, 0.2914
Android (android.graphics.Color)	4293620886 (0xFFEB7496)
YUV	155.4570, -2.6903, 69.7592
Hunter-Lab	56.8814, 44.8461, 5.7592

# Details

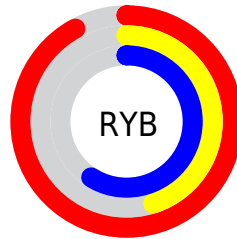
The Decimal color **15430806** is a light color, and the websafe version is hex **FF6699**. A complement of this color would be **7662537**, and the grayscale version is **10197915**.

A 20% lighter version of the original color is **16755660**, and **11550307** is the 20% darker color. If you saturate the color by 10%, you get **15424901**, and if you desaturate by 10%, it is **15436711**.

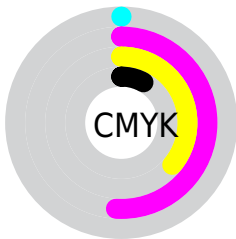
# Distribution



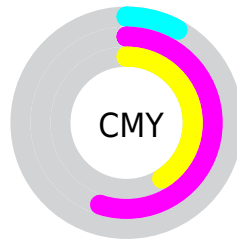
- Red (92%)
- Green (45%)
- Blue (59%)



- Red (92%)
- Yellow (45%)
- Blue (59%)



- Cyan (0%)
- Magenta (51%)
- Yellow (36%)
- Black (8%)



- Cyan (8%)
- Magenta (55%)
- Yellow (41%)

# Brightness & Saturation Gradients

These gradients show how the Decimal color 15430806 changes by changing the brightness by 10 percent. The first figure shows a shift by +10% for each color and the second figure -10%.

Similar to the brightness gradients but the following saturation gradients show a change of the Decimal color 15430806 by changing the saturation by 10% instead.



 15430806

 15430806

16777215

 13457788

 16755660

 11550307

 16762856

 9642572

 16770303

 7798837

 5963808

 4259848

 2359297

 0

 15430806

 15430806

 15424901

 15436711

 15418740

 15442872

 15412836

 15449032

 15406675

 15454937

 15401027

 15461098

 15466491

 15466495

# Harmonies

## Analogous

The Analogous color harmony consists of three colors that are next to each other on the color wheel.



13991106



15430806



15301227

# Triad

The Triadic color harmony groups three colors that are evenly spaced from another and form a triangle on the color wheel.



15430806



8431182



43497

# Complementary

The Complementary color scheme is a pair of colors which are on the opposite of each other on the color wheel.



15430806



7662537

# Split Complementary

Split-complementary colors differ from the complementary color scheme. The scheme consists of three colors, the original color and two neighbors of the complement color.



45002



15430806



4435314

# Square

The Square scheme is like the rectangle color scheme, but the four colors are evenly spaced on the color wheel.



15430806



11442750



45215



5545458

# Rectangle

The Rectangle color scheme consists of four colors that form a rectangle on the color wheel.



15430806



14451796



45215



44256



# Sweetspot

The Sweet Spot groups the original color and five complimentary colors.



15430806



16767460



13071595



8415599



0



8421504



# Same Dimension

The Same Dimension uses a secret algorithm to generate beautiful new colors.



15430806



16737168



15436916



7694957



11862068



3538959



# Inverse Universe

The Inverse Universe completely reimagines the original color for something new.



15430806



16737168



7656427



7694957



11862068



3538959



# Previews

## White Background



This preview shows how the Decimal color 15430806 looks on a white background.

## Color Contrast Check

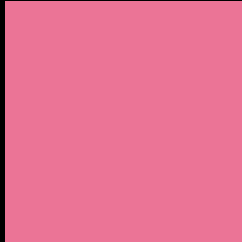
Large Text (above 18pt) WCAG AA × Fail

Any Text WCAG AA × Fail

Large Text (above 18pt) WCAG AAA × Fail

Any Text WCAG AAA × Fail

# Black Background



This preview shows how the Decimal color 15430806 looks on a black background.

## Color Contrast Check

Large Text (above 18pt) WCAG AA ✓ Pass

Any Text WCAG AA ✓ Pass

Large Text (above 18pt) WCAG AAA ✓ Pass

Any Text WCAG AAA ✓ Pass

If you want to check with other color combinations, try the [Color Contrast Checker](#).



## Decimal 15430806 Background



This preview shows how black text looks on a background with the Decimal color 15430806.



This preview shows how white text looks on a background with the Decimal color 15430806.

# Color Blindness Simulation

Color vision deficiency is a very complex topic, and I could not describe the different causes any better than Wikipedia does, so if you want to learn more, you should check out their [article about color blindness](#).

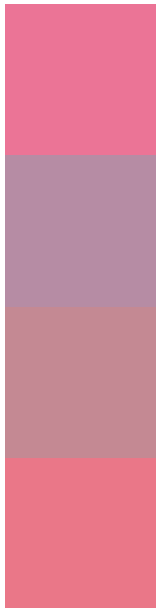
## Dichromacy





**Tritanopia**  
15300736

# Trichromacy



**Original Color**  
15430806

**Protanomaly**  
11963556

**Deuteranomaly**  
12880275

**Tritanomaly**  
15366024

# Monochromacy



**Original Color**  
15430806

**Achromatopsia**  
10197915

**Achromatomaly**  
12094873

# CSS Examples

## Text

The CSS property to change the color of the text to Decimal 15430806 is called "color". The color property can be set on classes, ids or directly on the HTML element.

This example shows how text in the color #EB7496 looks like.

```
.text, #text, p{  
    color:#EB7496  
}
```

If you want to add a text shadow in that color use the text-shadow property, you can generate a text shadow directly with our [CSS Text Shadow Generator](#).

Here you see how black text with a 4 pixel #EB7496 colored shadow looks like.

```
.shadow{ text-shadow: 4px 4px 2px #EB7496
}
```

## Border

The CSS property to change the border of an element to Decimal 15430806 is called "border". The border property can be set on classes, ids or directly on the HTML element.

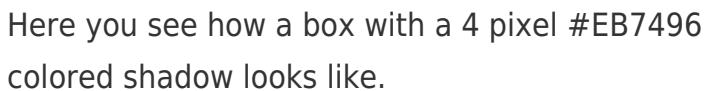
This example shows the color as border, it can be applied via the CSS property "border" or "border-color".

```
.border, #border, table{ border:4px solid
#EB7496 }
```

If only the border color should be changed use the property `border-color`.

```
.border{ border-color:#EB7496 }
```

If you want to add a box shadow in that color use:



Here you see how a box with a 4 pixel `#EB7496` colored shadow looks like.

```
.boxshadow{ -moz-box-shadow:4px 4px 4px  
4px #EB7496; -webkit-box-shadow:4px 4px  
4px 4px #EB7496; box-shadow:4px 4px 4px  
4px #EB7496 }
```

# Background

The CSS property to change the background color of an element to Decimal 15430806 is called "background". The background property can be set on classes, ids or directly on the HTML element.

```
.background, #background, body{  
background:#EB7496 }
```

If only the background color should be changed can be used:

```
.background{ background-color:#EB7496 }
```

This example shows the color as background, it is applied via the CSS property "background".

To optimize and compress your CSS code, you can use our [online CSS compressor and optimizer](#) based on csstidy. If you want to create a linear or radial gradient as background or border, check our [CSS Gradient Generator](#).



Hey! You found this booklet interesting? Support Converting Colors with the new Membership Option!

The pro membership hides all ads, plus gives you double the colors in the color bucket, and more awesome pro features!

**[Learn more, Memberships starting at \\$2.50/m!](#)**

**Follow me  
on Twitter!**

@ConvertingColor