

Converting Colors

Decimal(15434908)

Have a look what the booklet for
Decimal(15434908) contains.

Decimal(15434908)	3
<i>Conversions</i>	4
<i>Details</i>	6
<i>Harmonies</i>	11
<i>Previews</i>	23
<i>Color Blindness Simulation</i>	26
<i>CSS Examples</i>	29

Color

Decimal(15434908)

Conversions

Conversions Part 1

Format	Color
Hex	EB849C
RGB	235, 132, 156
RGB Percent	92%, 52%, 61%
CMY	0.0784, 0.4824, 0.3882
CMYK	0.00, 0.44, 0.34, 0.08
HSL	346°, 72%, 72%
HSV	346°, 44%, 92%
XYZ	48.5130, 36.5650, 35.9533
YIQ	165.5330, 53.6840, 29.3000

Conversions

Conversions Part 2

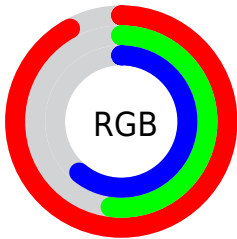
Format	Color
R _Y B	235, 132, 156
Decimal	15434908
CIE Lab	66.95, 42.05, 4.78
CIE LCh	67, 42.316, 6.485
Yxy	36.5650, 0.4008, 0.3021
Android (android.graphics.Color)	4293624988 (0xFFEB849C)
YUV	165.5330, -4.6998, 60.9226
Hunter-Lab	60.4690, 37.3859, 7.0760

Details

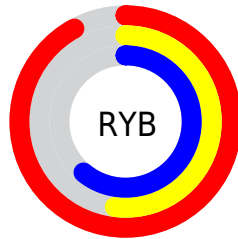
The Decimal color **15434908** is a light color, and the websafe version is hex **FF9999**. A complement of this color would be **8711123**, and the grayscale version is **10921638**.

A 20% lighter version of the original color is **16759762**, and **11554921** is the 20% darker color. If you saturate the color by 10%, you get **15429002**, and if you desaturate by 10%, it is **15441070**.

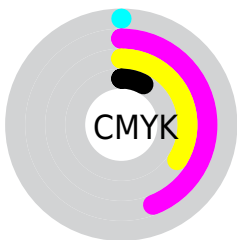
Distribution



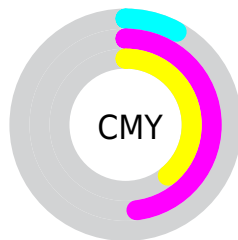
- Red (92%)
- Green (52%)
- Blue (61%)



- Red (92%)
- Yellow (52%)
- Blue (61%)



- Cyan (0%)
- Magenta (44%)
- Yellow (34%)
- Black (8%)



- Cyan (8%)
- Magenta (48%)
- Yellow (39%)

Brightness & Saturation Gradients

These gradients show how the Decimal color 15434908 changes by changing the brightness by 10 percent. The first figure shows a shift by +10% for each color and the second figure -10%.

Similar to the brightness gradients but the following saturation gradients show a change of the Decimal color 15434908 by changing the saturation by 10% instead.

 15434908

 15434908

16777215

 13462146

 16759762

 11554921

 16766959

 9713233

 16774399

 7871290

 6094885

 4325391

 2752513

 0

 15434908

 15434908

 15429002

 15441070

 15422840

 15446976

 15416934

 15453138

 15410772

 15459044

 15404866

 15465206

 15401015

 15466495

Harmonies

Analogous

The Analogous color harmony consists of three colors that are next to each other on the color wheel.



14256578



15434908



15239800

Triad

The Triadic color harmony groups three colors that are evenly spaced from another and form a triangle on the color wheel.



15434908



9088612



897000

Complementary

The Complementary color scheme is a pair of colors which are on the opposite of each other on the color wheel.



15434908



8711123

Split Complementary

Split-complementary colors differ from the complementary color scheme. The scheme consists of three colors, the original color and two neighbors of the complement color.



46543



15434908



5878915

Square

The Square scheme is like the rectangle color scheme, but the four colors are evenly spaced on the color wheel.



15434908



11772758



47018



7775470

Rectangle

The Rectangle color scheme consists of four colors that form a rectangle on the color wheel.



15434908



14455396



47018



45793

Sweetspot

The Sweet Spot groups the original color and five complimentary colors.



15434908



16768742



13862123



8416112



0



8421504

Same Dimension

The Same Dimension uses a secret algorithm to generate beautiful new colors.



15434908



16742551



15441796



7694956



11862058



3538956

Inverse Universe

The Inverse Universe completely reimagines the original color for something new.



15434908



16742551



8704235



7694956



11862058



3538956

Previews

White Background



This preview shows how the Decimal color 15434908 looks on a white background.

Color Contrast Check

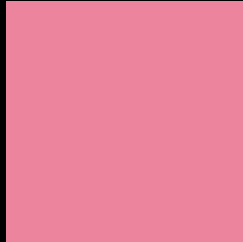
Large Text (above 18pt) WCAG AA × Fail

Any Text WCAG AA × Fail

Large Text (above 18pt) WCAG AAA × Fail

Any Text WCAG AAA × Fail

Black Background



This preview shows how the Decimal color 15434908 looks on a black background.

Color Contrast Check

Large Text (above 18pt) WCAG AA ✓ Pass

Any Text WCAG AA ✓ Pass

Large Text (above 18pt) WCAG AAA ✓ Pass

Any Text WCAG AAA ✓ Pass

If you want to check with other color combinations, try the [Color Contrast Checker](#).

Decimal 15434908 Background



This preview shows how black text looks on a background with the Decimal color 15434908.




This preview shows how white text looks on a background with the Decimal color 15434908.

Color Blindness Simulation

Color vision deficiency is a very complex topic, and I could not describe the different causes any better than Wikipedia does, so if you want to learn more, you should check out their [article about color blindness](#).

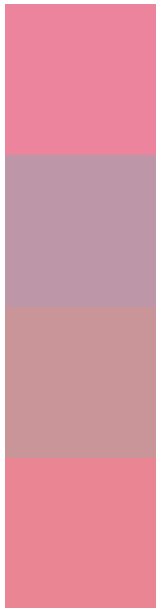
Dichromacy





Tritanopia
15369872

Trichromacy



Original Color
15434908

Protanomaly
12425127

Deuteranomaly
13276569

Tritanomaly
15369620

Monochromacy



Original Color
15434908

Achromatopsia
10921638

Achromatomaly
12556962

CSS Examples

Text

The CSS property to change the color of the text to Decimal 15434908 is called "color". The color property can be set on classes, ids or directly on the HTML element.

This example shows how text in the color #EB849C looks like.

```
.text, #text, p{  
    color:#EB849C  
}
```

If you want to add a text shadow in that color use the text-shadow property, you can generate a text shadow directly with our [CSS Text Shadow Generator](#).

Here you see how black text with a 4 pixel #EB849C colored shadow looks like.

```
.shadow{ text-shadow: 4px 4px 2px #EB849C  
}
```

Border

The CSS property to change the border of an element to Decimal 15434908 is called "border". The border property can be set on classes, ids or directly on the HTML element.

This example shows the color as border, it can be applied via the CSS property "border" or "border-color".

```
.border, #border, table{ border:4px solid  
#EB849C }
```

If only the border color should be changed use the property `border-color`.

```
.border{ border-color:#EB849C }
```

If you want to add a box shadow in that color use:

Here you see how a box with a 4 pixel #EB849C colored shadow looks like.

```
.boxshadow{ -moz-box-shadow:4px 4px 4px  
4px #EB849C; -webkit-box-shadow:4px 4px  
4px 4px #EB849C; box-shadow:4px 4px 4px  
4px #EB849C }
```

Background

The CSS property to change the background color of an element to Decimal 15434908 is called "background". The background property can be set on classes, ids or directly on the HTML element.

```
.background, #background, body{  
background:#EB849C }
```

If only the background color should be changed can be used:

```
.background{ background-color:#EB849C }
```

This example shows the color as background, it is applied via the CSS property "background".

To optimize and compress your CSS code, you can use our [online CSS compressor and optimizer](#) based on csstidy. If you want to create a linear or radial gradient as background or border, check our [CSS Gradient Generator](#).

Hey! You found this booklet interesting? Support Converting Colors with the new Membership Option!

The pro membership hides all ads, plus gives you double the colors in the color bucket, and more awesome pro features!

[Learn more, Memberships starting at \\$2.50/m!](#)

**Follow me
on Twitter!**

@ConvertingColor