

# Converting Colors

Decimal(15447748)

Have a look what the booklet for  
Decimal(15447748) contains.

<b>Decimal(15447748)</b> .....	3
<i><b>Conversions</b></i> .....	4
<i><b>Details</b></i> .....	6
<i><b>Harmonies</b></i> .....	11
<i><b>Previews</b></i> .....	23
<i><b>Color Blindness Simulation</b></i> .....	26
<i><b>CSS Examples</b></i> .....	29

# **Color**

**Decimal(15447748)**

# Conversions

## Conversions Part 1

<b>Format</b>	<b>Color</b>
Hex	EBB6C4
RGB	235, 182, 196
RGB Percent	92%, 71%, 77%
CMY	0.0784, 0.2863, 0.2314
CMYK	0.00, 0.23, 0.17, 0.08
HSL	344°, 57%, 82%
HSV	344°, 23%, 92%
XYZ	60.9527, 55.1036, 59.6481
YIQ	199.4430, 27.0940, 15.5900

# Conversions

## Conversions Part 2

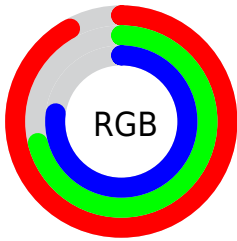
<b>Format</b>	<b>Color</b>
R <sub>Y</sub> B	235, 182, 196
Decimal	15447748
CIE Lab	79.10, 21.26, 0.32
CIE LCh	79, 21.261, 0.862
Yxy	55.1036, 0.3469, 0.3136
Android (android.graphics.Color)	4293637828 (0xFFEBB6C4)
YUV	199.4430, -1.6974, 31.1835
Hunter-Lab	74.2318, 16.6631, 4.3205

# Details

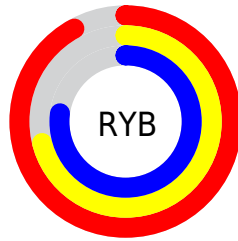
The Decimal color **15447748** is a light color, and the websafe version is hex **FFCCCC**. A complement of this color would be **11987933**, and the grayscale version is **13092807**.

A 20% lighter version of the original color is **16772861**, and **11764110** is the 20% darker color. If you saturate the color by 10%, you get **15441843**, and if you desaturate by 10%, it is **15453909**.

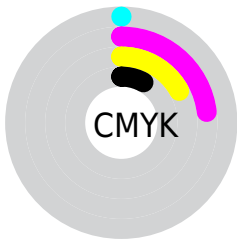
# Distribution



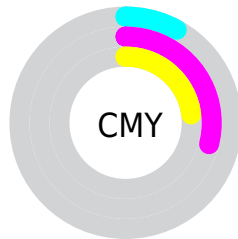
- Red (92%)
- Green (71%)
- Blue (77%)



- Red (92%)
- Yellow (71%)
- Blue (77%)



- Cyan (0%)
- Magenta (23%)
- Yellow (17%)
- Black (8%)



- Cyan (8%)
- Magenta (29%)
- Yellow (23%)

# Brightness & Saturation Gradients

These gradients show how the Decimal color 15447748 changes by changing the brightness by 10 percent. The first figure shows a shift by +10% for each color and the second figure -10%.

Similar to the brightness gradients but the following saturation gradients show a change of the Decimal color 15447748 by changing the saturation by 10% instead.



15447748

15447748

16777215

13540265

16772861

11764110

9922421

8212316

6502469

4858159

3345178

2031617

0

 15447748

 15447748

 15441843

 15453909

 15435681

 15459815

 15429776

 15465976

 15423615

 15466495

 15417710

 15411548

 15405643

 15401022

# Harmonies

## Analogous

The Analogous color harmony consists of three colors that are next to each other on the color wheel.



14596567



15447748



15579056

# Triad

The Triadic color harmony groups three colors that are evenly spaced from another and form a triangle on the color wheel.



15447748



12437922



10013670

# Complementary

The Complementary color scheme is a pair of colors which are on the opposite of each other on the color wheel.



15447748



11987933

# Split Complementary

Split-complementary colors differ from the complementary color scheme. The scheme consists of three colors, the original color and two neighbors of the complement color.



9359319



15447748



10931632

# Square

The Square scheme is like the rectangle color scheme, but the four colors are evenly spaced on the color wheel.



15447748



13878173



9818052



11453931

# Rectangle

The Rectangle color scheme consists of four colors that form a rectangle on the color wheel.



15447748



15252134



9818052



9686498



# Sweetspot

The Sweet Spot groups the original color and five complimentary colors.



15447748



16772594



14530283



8418680



0



8421504



# Same Dimension

The Same Dimension uses a secret algorithm to generate beautiful new colors.



15447748



16759500



15450806



7694957



11862064



3538958



# Inverse Universe

The Inverse Universe completely reimagines the original color for something new.



15447748



16759500



11984875



7694957



11862064



3538958



# Previews

## White Background



This preview shows how the Decimal color 15447748 looks on a white background.

## Color Contrast Check

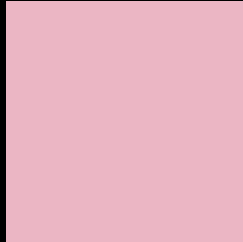
Large Text (above 18pt) WCAG AA × Fail

Any Text WCAG AA × Fail

Large Text (above 18pt) WCAG AAA × Fail

Any Text WCAG AAA × Fail

# Black Background



This preview shows how the Decimal color 15447748 looks on a black background.

## Color Contrast Check

Large Text (above 18pt) WCAG AA ✓ Pass

Any Text WCAG AA ✓ Pass

Large Text (above 18pt) WCAG AAA ✓ Pass

Any Text WCAG AAA ✓ Pass

If you want to check with other color combinations, try the [Color Contrast Checker](#).



## Decimal 15447748 Background



This preview shows how black text looks on a background with the Decimal color 15447748.

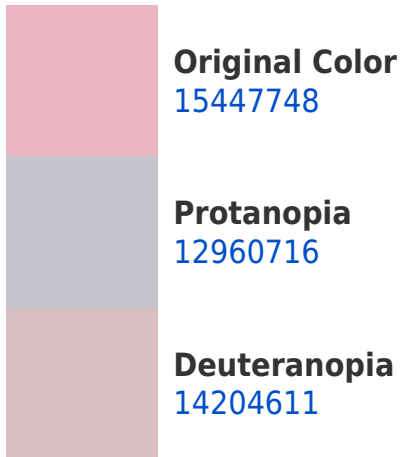


This preview shows how white text looks on a background with the Decimal color 15447748.

# Color Blindness Simulation

Color vision deficiency is a very complex topic, and I could not describe the different causes any better than Wikipedia does, so if you want to learn more, you should check out their [article about color blindness](#).

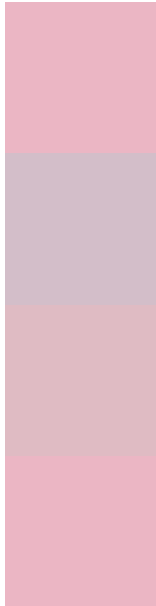
## Dichromacy





**Tritanopia**  
15447748

# Trichromacy



**Original Color**  
15447748

**Protanomaly**  
13876937

**Deuteranomaly**  
14662595

**Tritanomaly**  
15447748

# Monochromacy



**Original Color**  
15447748

**Achromatopsia**  
13092807

**Achromatomaly**  
13943238

# CSS Examples

## Text

The CSS property to change the color of the text to Decimal 15447748 is called "color". The color property can be set on classes, ids or directly on the HTML element.

This example shows how text in the color #EBB6C4 looks like.

```
.text, #text, p{  
    color:#EBB6C4  
}
```

If you want to add a text shadow in that color use the text-shadow property, you can generate a text shadow directly with our [CSS Text Shadow Generator](#).

Here you see how black text with a 4 pixel #EBB6C4 colored shadow looks like.

```
.shadow{ text-shadow: 4px 4px 2px #EBB6C4
}
```

## Border

The CSS property to change the border of an element to Decimal 15447748 is called "border". The border property can be set on classes, ids or directly on the HTML element.

This example shows the color as border, it can be applied via the CSS property "border" or "border-color".

```
.border, #border, table{ border:4px solid
#EBB6C4 }
```

If only the border color should be changed use the property `border-color`.

```
.border{ border-color:#EBB6C4 }
```

If you want to add a box shadow in that color use:

Here you see how a box with a 4 pixel #EBB6C4 colored shadow looks like.

```
.boxshadow{ -moz-box-shadow:4px 4px 4px  
4px #EBB6C4; -webkit-box-shadow:4px 4px  
4px 4px #EBB6C4; box-shadow:4px 4px 4px  
4px #EBB6C4 }
```

# Background

The CSS property to change the background color of an element to Decimal 15447748 is called "background". The background property can be set on classes, ids or directly on the HTML element.

```
.background, #background, body{  
background:#EBB6C4 }
```

If only the background color should be changed can be used:

```
.background{ background-color:#EBB6C4 }
```

This example shows the color as background, it is applied via the CSS property "background".

To optimize and compress your CSS code, you can use our [online CSS compressor and optimizer](#) based on csstidy. If you want to create a linear or radial gradient as background or border, check our [CSS Gradient Generator](#).



Hey! You found this booklet interesting? Support Converting Colors with the new Membership Option!

The pro membership hides all ads, plus gives you double the colors in the color bucket, and more awesome pro features!

**[Learn more, Memberships starting at \\$2.50/m!](#)**

**Follow me  
on Twitter!**

@ConvertingColor