

Converting Colors

Decimal(15448757)

Have a look what the booklet for
Decimal(15448757) contains.

Decimal(15448757)	3
<i>Conversions</i>	4
<i>Details</i>	6
<i>Harmonies</i>	11
<i>Previews</i>	23
<i>Color Blindness Simulation</i>	26
<i>CSS Examples</i>	29

Color

Decimal(15448757)

Conversions

Conversions Part 1

Format	Color
Hex	EBBAB5
RGB	235, 186, 181
RGB Percent	92%, 73%, 71%
CMY	0.0784, 0.2706, 0.2902
CMYK	0.00, 0.21, 0.23, 0.08
HSL	6°, 57%, 82%
HSV	6°, 23%, 92%
XYZ	60.1603, 56.1162, 51.3768
YIQ	200.0810, 30.8090, 8.8330

Conversions

Conversions Part 2

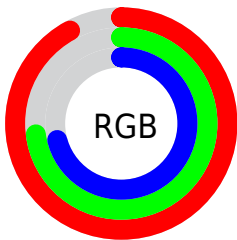
Format	Color
R _Y B	235, 187, 181
Decimal	15448757
CIE Lab	79.68, 16.89, 9.26
CIE LCh	80, 19.260, 28.743
Yxy	56.1162, 0.3588, 0.3347
Android (android.graphics.Color)	4293638837 (0xFFE8B85)
YUV	200.0810, -9.4069, 30.6240
Hunter-Lab	74.9107, 12.2585, 11.7741

Details

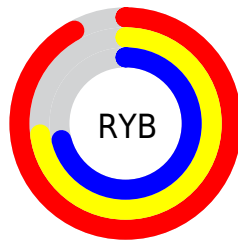
The Decimal color **15448757** is a light color, and the websafe version is hex **FFCCCC**. A complement of this color would be **11921131**, and the grayscale version is **13158600**.

A 20% lighter version of the original color is **16773869**, and **11699584** is the 20% darker color. If you saturate the color by 10%, you get **15443358**, and if you desaturate by 10%, it is **15454157**.

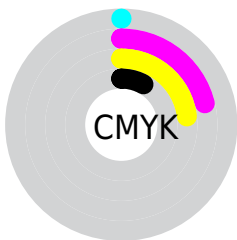
Distribution



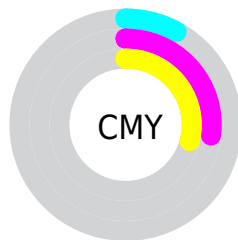
- Red (92%)
- Green (73%)
- Blue (71%)



- Red (92%)
- Yellow (73%)
- Blue (71%)



- Cyan (0%)
- Magenta (21%)
- Yellow (23%)
- Black (8%)



- Cyan (8%)
- Magenta (27%)
- Yellow (29%)

Brightness & Saturation Gradients

These gradients show how the Decimal color 15448757 changes by changing the brightness by 10 percent. The first figure shows a shift by +10% for each color and the second figure -10%.

Similar to the brightness gradients but the following saturation gradients show a change of the Decimal color 15448757 by changing the saturation by 10% instead.



 15448757

 15448757

 15443358

 15454157

 15437702

 15459812

 15432303

 15465212

 15426903

 15466495

 15421248

 15415848

 15410449

 15406592

Harmonies

Analogous

The Analogous color harmony consists of three colors that are next to each other on the color wheel.



15317447



15448757



14991015

Triad

The Triadic color harmony groups three colors that are evenly spaced from another and form a triangle on the color wheel.



15448757



11325106



11585513

Complementary

The Complementary color scheme is a pair of colors which are on the opposite of each other on the color wheel.



15448757



11921131

Split Complementary

Split-complementary colors differ from the complementary color scheme. The scheme consists of three colors, the original color and two neighbors of the complement color.



10341604



15448757



10277060

Square

The Square scheme is like the rectangle color scheme, but the four colors are evenly spaced on the color wheel.



15448757



12700326



9883606



13156837

Rectangle

The Rectangle color scheme consists of four colors that form a rectangle on the color wheel.



15448757



14336675



9883606



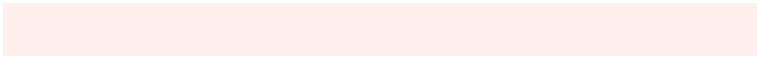
11127272

Sweetspot

The Sweet Spot groups the original color and five complimentary colors.



15448757



16773101



15447527



8418933



0



8421504

Same Dimension

The Same Dimension uses a secret algorithm to generate beautiful new colors.



15448757



16760504



15455413



7695210



11866368



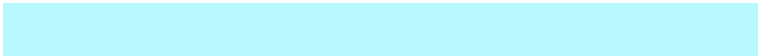
3540224

Inverse Universe

The Inverse Universe completely reimagines the original color for something new.



11921131



12122367



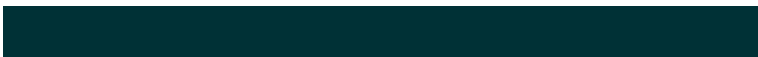
11914475



6976629



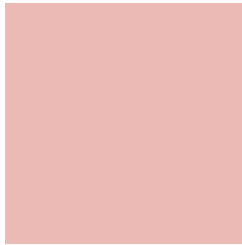
42165



12598

Previews

White Background



This preview shows how the Decimal color 15448757 looks on a white background.

Color Contrast Check

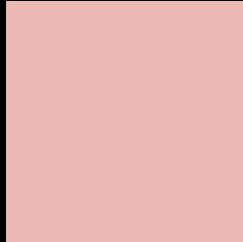
Large Text (above 18pt) WCAG AA × Fail

Any Text WCAG AA × Fail

Large Text (above 18pt) WCAG AAA × Fail

Any Text WCAG AAA × Fail

Black Background



This preview shows how the Decimal color 15448757 looks on a black background.

Color Contrast Check

Large Text (above 18pt) WCAG AA ✓ Pass

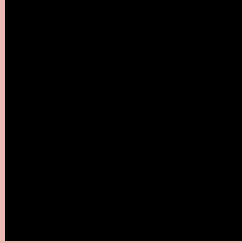
Any Text WCAG AA ✓ Pass

Large Text (above 18pt) WCAG AAA ✓ Pass

Any Text WCAG AAA ✓ Pass

If you want to check with other color combinations, try the [Color Contrast Checker](#).

Decimal 15448757 Background



This preview shows how black text looks on a background with the Decimal color 15448757.



This preview shows how white text looks on a background with the Decimal color 15448757.

Color Blindness Simulation

Color vision deficiency is a very complex topic, and I could not describe the different causes any better than Wikipedia does, so if you want to learn more, you should check out their [article about color blindness](#).

Dichromacy





Tritanopia
15579078

Trichromacy



Original Color
15448757

Protanomaly
14139833

Deuteranomaly
14925236

Tritanomaly
15513792

Monochromacy



Original Color
15448757

Achromatopsia
13158600

Achromatomaly
14009281

CSS Examples

Text

The CSS property to change the color of the text to Decimal 15448757 is called "color". The color property can be set on classes, ids or directly on the HTML element.

This example shows how text in the color #EBBAB5 looks like.

```
.text, #text, p{  
  color:#EBBAB5  
}
```

If you want to add a text shadow in that color use the text-shadow property, you can generate a text shadow directly with our [CSS Text Shadow Generator](#).

Here you see how black text with a 4 pixel #EBBAB5 colored shadow looks like.

```
.shadow{ text-shadow: 4px 4px 2px #EBBAB5
}
```

Border

The CSS property to change the border of an element to Decimal 15448757 is called "border". The border property can be set on classes, ids or directly on the HTML element.

This example shows the color as border, it can be applied via the CSS property "border" or "border-color".

```
.border, #border, table{ border:4px solid
#EBBAB5 }
```

If only the border color should be changed use the property `border-color`.

```
.border{ border-color:#EBBAB5 }
```

If you want to add a box shadow in that color use:

Here you see how a box with a 4 pixel #EBBAB5 colored shadow looks like.

```
.boxshadow{ -moz-box-shadow:4px 4px 4px  
4px #EBBAB5; -webkit-box-shadow:4px 4px  
4px 4px #EBBAB5; box-shadow:4px 4px 4px  
4px #EBBAB5 }
```

Background

The CSS property to change the background color of an element to Decimal 15448757 is called "background". The background property can be set on classes, ids or directly on the HTML element.

```
.background, #background, body{  
background:#EBBAB5 }
```

If only the background color should be changed can be used:

```
.background{ background-color:#EBBAB5 }
```

This example shows the color as background, it is applied via the CSS property "background".

To optimize and compress your CSS code, you can use our [online CSS compressor and optimizer](#) based on csstidy. If you want to create a linear or radial gradient as background or border, check our [CSS Gradient Generator](#).

Hey! You found this booklet interesting? Support Converting Colors with the new Membership Option!

The pro membership hides all ads, plus gives you double the colors in the color bucket, and more awesome pro features!

[Learn more, Memberships starting at \\$2.50/m!](#)

**Follow me
on Twitter!**

@ConvertingColor