

Converting Colors

Decimal(15451822)

Have a look what the booklet for
Decimal(15451822) contains.

Decimal(15451822)	3
<i>Conversions</i>	4
<i>Details</i>	6
<i>Harmonies</i>	11
<i>Previews</i>	23
<i>Color Blindness Simulation</i>	26
<i>CSS Examples</i>	29

Color

Decimal(15451822)

Conversions

Conversions Part 1

Format	Color
Hex	EBC6AE
RGB	235, 198, 174
RGB Percent	92%, 78%, 68%
CMY	0.0784, 0.2235, 0.3176
CMYK	0.00, 0.16, 0.26, 0.08
HSL	24°, 60%, 80%
HSV	24°, 26%, 92%
XYZ	62.0950, 61.1063, 48.5663
YIQ	206.3270, 29.7560, 0.3800

Conversions

Conversions Part 2

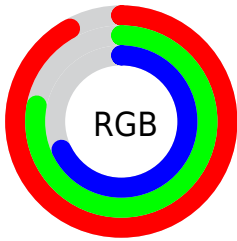
Format	Color
RYB	235, 214, 174
Decimal	15451822
CIELab	82.44, 9.56, 16.91
CIELCh	82, 19.422, 60.511
Yxy	61.1063, 0.3615, 0.3557
Android (android.graphics.Color)	4293641902 (0xFFEBC6AE)
YUV	206.3270, -15.9372, 25.1462
Hunter-Lab	78.1705, 4.9936, 17.8833

Details

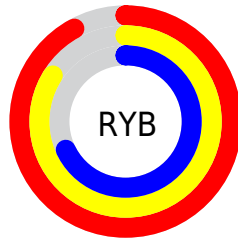
The Decimal color **15451822** is a light color, and the websafe version is hex **FFCCCC**. A complement of this color would be **11457515**, and the grayscale version is **13553358**.

A 20% lighter version of the original color is **16777190**, and **11702394** is the 20% darker color. If you saturate the color by 10%, you get **15448215**, and if you desaturate by 10%, it is **15455430**.

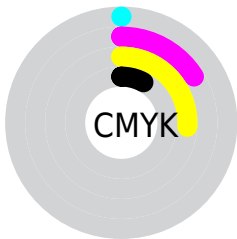
Distribution



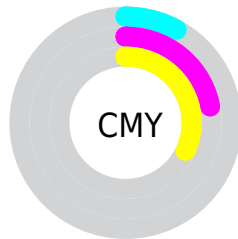
- Red (92%)
- Green (78%)
- Blue (68%)



- Red (92%)
- Yellow (84%)
- Blue (68%)



- Cyan (0%)
- Magenta (16%)
- Yellow (26%)
- Black (8%)



- Cyan (8%)
- Magenta (22%)
- Yellow (32%)

Brightness & Saturation Gradients

These gradients show how the Decimal color 15451822 changes by changing the brightness by 10 percent. The first figure shows a shift by +10% for each color and the second figure -10%.

Similar to the brightness gradients but the following saturation gradients show a change of the Decimal color 15451822 by changing the saturation by 10% instead.

 15451822

 15451822

16777215

 13544339

 16777190

 11702394

 9926497

 8216137

 6506034

 4861981

 3349252

 1835264

 0

 15451822

 15451822

 15448215

 15455430

 15444351

 15459293

 15440744

 15462900

 15437136

 15466495

 15433528

 15429665

 15426058

 15424512

Harmonies

Analogous

The Analogous color harmony consists of three colors that are next to each other on the color wheel.



15975099



15451822



14404777

Triad

The Triadic color harmony groups three colors that are evenly spaced from another and form a triangle on the color wheel.



15451822



10672333



13748460

Complementary

The Complementary color scheme is a pair of colors which are on the opposite of each other on the color wheel.



15451822



11457515

Split Complementary

Split-complementary colors differ from the complementary color scheme. The scheme consists of three colors, the original color and two neighbors of the complement color.



12177393



15451822



10344415

Square

The Square scheme is like the rectangle color scheme, but the four colors are evenly spaced on the color wheel.



15451822



11720379



10867948



15057887

Rectangle

The Rectangle color scheme consists of four colors that form a rectangle on the color wheel.



15451822



13553835



10867948



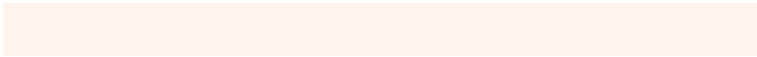
13224687

Sweetspot

The Sweet Spot groups the original color and five complimentary colors.



15451822



16774123



15445716



8419443



0



8421504

Same Dimension

The Same Dimension uses a secret algorithm to generate beautiful new colors.



15451822



16764848



15459502



7695978



11880192



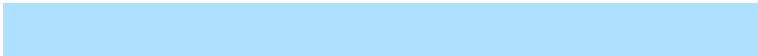
3544320

Inverse Universe

The Inverse Universe completely reimagines the original color for something new.



11457515



11591935



11449835



6975861



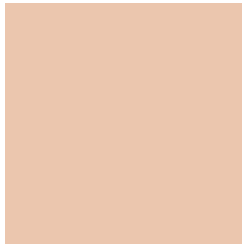
28341



8246

Previews

White Background



This preview shows how the Decimal color 15451822 looks on a white background.

Color Contrast Check

Large Text (above 18pt) WCAG AA × Fail

Any Text WCAG AA × Fail

Large Text (above 18pt) WCAG AAA × Fail

Any Text WCAG AAA × Fail

Black Background



This preview shows how the Decimal color 15451822 looks on a black background.

Color Contrast Check

Large Text (above 18pt) WCAG AA ✓ Pass

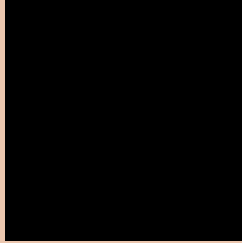
Any Text WCAG AA ✓ Pass

Large Text (above 18pt) WCAG AAA ✓ Pass

Any Text WCAG AAA ✓ Pass

If you want to check with other color combinations, try the [Color Contrast Checker](#).

Decimal 15451822 Background



This preview shows how black text looks on a background with the Decimal color 15451822.



This preview shows how white text looks on a background with the Decimal color 15451822.

Color Blindness Simulation

Color vision deficiency is a very complex topic, and I could not describe the different causes any better than Wikipedia does, so if you want to learn more, you should check out their [article about color blindness](#).

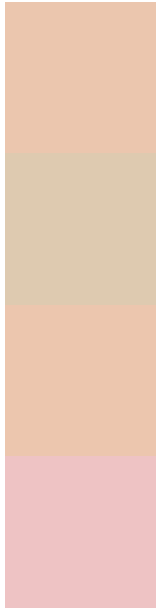
Dichromacy





Tritanopia
15712720

Trichromacy



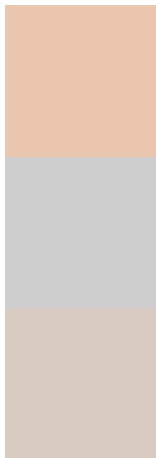
Original Color
15451822

Protanomaly
14600880

Deuteranomaly
15517358

Tritanomaly
15647684

Monochromacy



Original Color
15451822

Achromatopsia
13553358

Achromatomaly
14273474

CSS Examples

Text

The CSS property to change the color of the text to Decimal 15451822 is called "color". The color property can be set on classes, ids or directly on the HTML element.

This example shows how text in the color #EBC6AE looks like.

```
.text, #text, p{  
    color:#EBC6AE  
}
```

If you want to add a text shadow in that color use the text-shadow property, you can generate a text shadow directly with our [CSS Text Shadow Generator](#).

Here you see how black text with a 4 pixel #EBC6AE colored shadow looks like.

```
.shadow{ text-shadow: 4px 4px 2px #EBC6AE  
}
```

Border

The CSS property to change the border of an element to Decimal 15451822 is called "border". The border property can be set on classes, ids or directly on the HTML element.

This example shows the color as border, it can be applied via the CSS property "border" or "border-color".

```
.border, #border, table{ border:4px solid  
#EBC6AE }
```

If only the border color should be changed use the property `border-color`.

```
.border{ border-color:#EBC6AE }
```

If you want to add a box shadow in that color use:

Here you see how a box with a 4 pixel #EBC6AE colored shadow looks like.

```
.boxshadow{ -moz-box-shadow:4px 4px 4px  
4px #EBC6AE; -webkit-box-shadow:4px 4px  
4px 4px #EBC6AE; box-shadow:4px 4px 4px  
4px #EBC6AE }
```

Background

The CSS property to change the background color of an element to Decimal 15451822 is called "background". The background property can be set on classes, ids or directly on the HTML element.

```
.background, #background, body{  
background:#EBC6AE }
```

If only the background color should be changed can be used:

```
.background{ background-color:#EBC6AE }
```

This example shows the color as background, it is applied via the CSS property "background".

To optimize and compress your CSS code, you can use our [online CSS compressor and optimizer](#) based on csstidy. If you want to create a linear or radial gradient as background or border, check our [CSS Gradient Generator](#).

Hey! You found this booklet interesting? Support Converting Colors with the new Membership Option!

The pro membership hides all ads, plus gives you double the colors in the color bucket, and more awesome pro features!

[Learn more, Memberships starting at \\$2.50/m!](#)

**Follow me
on Twitter!**

@ConvertingColor