

Converting Colors

Decimal(15452090)

Have a look what the booklet for
Decimal(15452090) contains.

Decimal(15452090)	3
<i>Conversions</i>	4
<i>Details</i>	6
<i>Harmonies</i>	11
<i>Previews</i>	23
<i>Color Blindness Simulation</i>	26
<i>CSS Examples</i>	29

Color

Decimal(15452090)

Conversions

Conversions Part 1

Format	Color
Hex	EBC7BA
RGB	235, 199, 186
RGB Percent	92%, 78%, 73%
CMY	0.0784, 0.2196, 0.2706
CMYK	0.00, 0.15, 0.21, 0.08
HSL	16°, 55%, 83%
HSV	16°, 21%, 92%
XYZ	63.5473, 62.0542, 55.0827
YIQ	208.2820, 25.6290, 3.5890

Conversions

Conversions Part 2

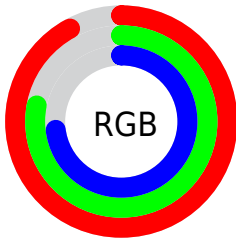
Format	Color
R _Y B	235, 204, 186
Decimal	15452090
CIE Lab	82.94, 10.73, 11.23
CIE LCh	83, 15.534, 46.291
Yxy	62.0542, 0.3517, 0.3434
Android (android.graphics.Color)	4293642170 (0xFFEBC7BA)
YUV	208.2820, -10.9850, 23.4317
Hunter-Lab	78.7745, 6.1404, 13.6839

Details

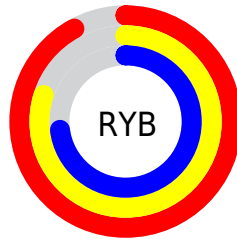
The Decimal color **15452090** is a light color, and the websafe version is hex **FFCCCC**. A complement of this color would be **12246763**, and the grayscale version is **13684944**.

A 20% lighter version of the original color is **16777202**, and **11768197** is the 20% darker color. If you saturate the color by 10%, you get **15447715**, and if you desaturate by 10%, it is **15456466**.

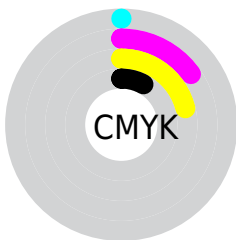
Distribution



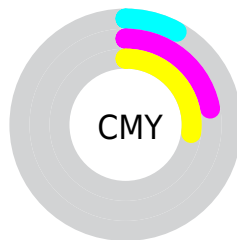
- Red (92%)
- Green (78%)
- Blue (73%)



- Red (92%)
- Yellow (80%)
- Blue (73%)



- Cyan (0%)
- Magenta (15%)
- Yellow (21%)
- Black (8%)



- Cyan (8%)
- Magenta (22%)
- Yellow (27%)

Brightness & Saturation Gradients

These gradients show how the Decimal color 15452090 changes by changing the brightness by 10 percent. The first figure shows a shift by +10% for each color and the second figure -10%.

Similar to the brightness gradients but the following saturation gradients show a change of the Decimal color 15452090 by changing the saturation by 10% instead.

 15452090

 15452090

16777215

 13610143

 16777202

 11768197

 9992044

 8216403

 6571836

 4927527

 3349266

 2032128

 0

 15452090

 15452090

 15447715

 15456466

 15443083

 15461097

 15438707

 15465471

 15434332

 15466495

 15429957

 15425325

 15420949

 15416832

Harmonies

Analogous

The Analogous color harmony consists of three colors that are next to each other on the color wheel.



15648199



15452090



14797747

Triad

The Triadic color harmony groups three colors that are evenly spaced from another and form a triangle on the color wheel.



15452090



11720647



13225450

Complementary

The Complementary color scheme is a pair of colors which are on the opposite of each other on the color wheel.



15452090



12246763

Split Complementary

Split-complementary colors differ from the complementary color scheme. The scheme consists of three colors, the original color and two neighbors of the complement color.



12047082



15452090



11196374

Square

The Square scheme is like the rectangle color scheme, but the four colors are evenly spaced on the color wheel.



15452090



12702906



11261411



14403811

Rectangle

The Rectangle color scheme consists of four colors that form a rectangle on the color wheel.



15452090



14143154



11261411



12832747

Sweetspot

The Sweet Spot groups the original color and five complimentary colors.



15452090



16774384



15448799



8419703



0



8421504

Same Dimension

The Same Dimension uses a secret algorithm to generate beautiful new colors.



15452090



16765119



15458234



7695722



11874304



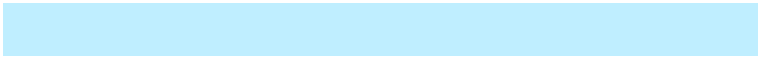
3542528

Inverse Universe

The Inverse Universe completely reimagines the original color for something new.



12246763



12578559



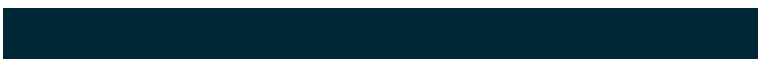
12240619



6976117



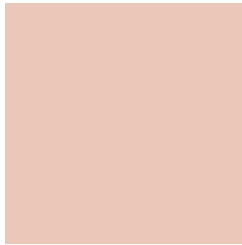
34229



10038

Previews

White Background



This preview shows how the Decimal color 15452090 looks on a white background.

Color Contrast Check

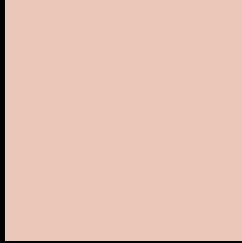
Large Text (above 18pt) WCAG AA × Fail

Any Text WCAG AA × Fail

Large Text (above 18pt) WCAG AAA × Fail

Any Text WCAG AAA × Fail

Black Background



This preview shows how the Decimal color 15452090 looks on a black background.

Color Contrast Check

Large Text (above 18pt) WCAG AA ✓ Pass

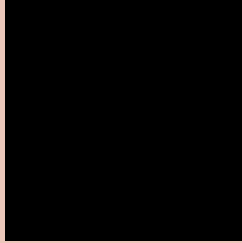
Any Text WCAG AA ✓ Pass

Large Text (above 18pt) WCAG AAA ✓ Pass

Any Text WCAG AAA ✓ Pass

If you want to check with other color combinations, try the [Color Contrast Checker](#).

Decimal 15452090 Background



This preview shows how black text looks on a background with the Decimal color 15452090.

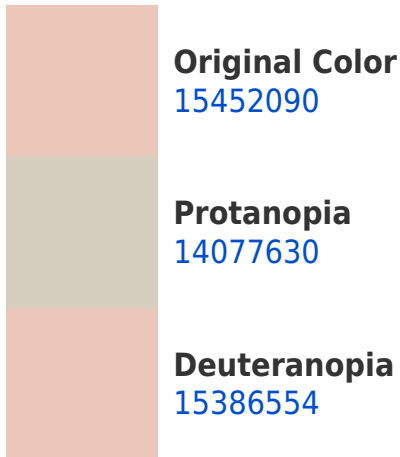


This preview shows how white text looks on a background with the Decimal color 15452090.

Color Blindness Simulation

Color vision deficiency is a very complex topic, and I could not describe the different causes any better than Wikipedia does, so if you want to learn more, you should check out their [article about color blindness](#).

Dichromacy





Tritanopia
15647699

Trichromacy



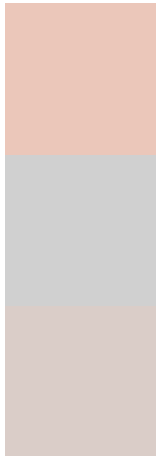
Original Color
15452090

Protanomaly
14601149

Deuteranomaly
15386554

Tritanomaly
15582410

Monochromacy



Original Color
15452090

Achromatopsia
13684944

Achromatomaly
14339528

CSS Examples

Text

The CSS property to change the color of the text to Decimal 15452090 is called "color". The color property can be set on classes, ids or directly on the HTML element.

This example shows how text in the color #EBC7BA looks like.

```
.text, #text, p{  
    color:#EBC7BA  
}
```

If you want to add a text shadow in that color use the text-shadow property, you can generate a text shadow directly with our [CSS Text Shadow Generator](#).

Here you see how black text with a 4 pixel #EBC7BA colored shadow looks like.

```
.shadow{ text-shadow: 4px 4px 2px #EBC7BA
}
```

Border

The CSS property to change the border of an element to Decimal 15452090 is called "border". The border property can be set on classes, ids or directly on the HTML element.

This example shows the color as border, it can be applied via the CSS property "border" or "border-color".

```
.border, #border, table{ border:4px solid
#EBC7BA }
```

If only the border color should be changed use the property `border-color`.

```
.border{ border-color:#EBC7BA }
```

If you want to add a box shadow in that color use:

Here you see how a box with a 4 pixel #EBC7BA colored shadow looks like.

```
.boxshadow{ -moz-box-shadow:4px 4px 4px  
4px #EBC7BA; -webkit-box-shadow:4px 4px  
4px 4px #EBC7BA; box-shadow:4px 4px 4px  
4px #EBC7BA }
```

Background

The CSS property to change the background color of an element to Decimal 15452090 is called "background". The background property can be set on classes, ids or directly on the HTML element.

```
.background, #background, body{  
background:#EBC7BA }
```

If only the background color should be changed can be used:

```
.background{ background-color:#EBC7BA }
```

This example shows the color as background, it is applied via the CSS property "background".

To optimize and compress your CSS code, you can use our [online CSS compressor and optimizer](#) based on csstidy. If you want to create a linear or radial gradient as background or border, check our [CSS Gradient Generator](#).

Hey! You found this booklet interesting? Support Converting Colors with the new Membership Option!

The pro membership hides all ads, plus gives you double the colors in the color bucket, and more awesome pro features!

[Learn more, Memberships starting at \\$2.50/m!](#)

**Follow me
on Twitter!**

@ConvertingColor